



## SAW Components

SAW filter

GPS

<b>Series/type:</b>	<b>B9416</b>
<b>Ordering code:</b>	<b>B39162B9416K610</b>
<b>Date:</b>	<b>May 17, 2010</b>
<b>Version:</b>	<b>2.3</b>



Data sheet



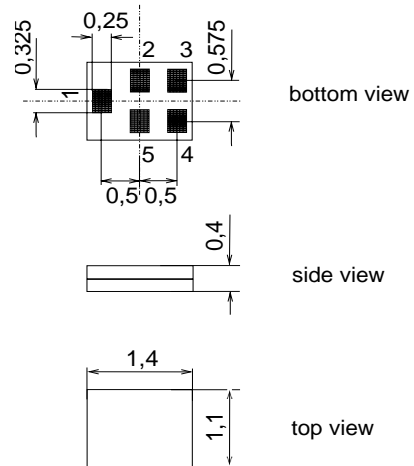
Application

- Low-loss RF filter for mobile telephone GPS systems
- Filter impedance 50 Ω
- Unbalanced to unbalanced operation
- Very low insertion attenuation
- Low amplitude ripple
- Usable passband 2.0 MHz



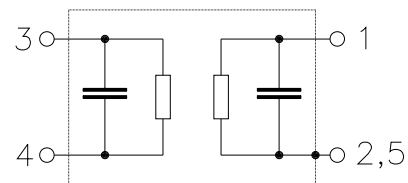
Features

- Package size 1.4 x 1.1 x 0.4 mm<sup>3</sup>
- Package code QCS5U
- RoHS compatible
- Approximate weight 0.003 g
- Package for **Surface Mount Technology (SMT)**
- Ni, gold-plated terminals
- **Electrostatic Sensitive Device (ESD)**



Pin configuration

- 4 Input unbalanced
- 1 Output unbalanced
- 2,3,5 To be grounded





Data sheet



**Characteristics**

Temperature range for specification:  $T = -30\text{ °C to }+85\text{ °C}$   
 Terminating source impedance:  $Z_S = 50\ \Omega$   
 Terminating load impedance:  $Z_L = 50\ \Omega$

		min.	typ. @ 25 °C	max.	
<b>Center frequency</b>	$f_C$	—	1575.42	—	MHz
<b>Maximum insertion attenuation</b>	$\alpha_{max}$				
1574.42 ... 1576.42 MHz		—	0.9	1.2	dB
<b>Amplitude ripple (p-p)</b>	$\Delta\alpha$				
1574.42 ... 1576.42 MHz		—	0.05	0.3	dB
<b>Input VSWR</b>					
1574.42 ... 1576.42 MHz		—	1.1	1.8	
<b>Output VSWR</b>					
1574.42 ... 1576.42 MHz		—	1.1	1.8	
<b>Attenuation</b>	$\alpha$				
0.1 ... 960.0 MHz		38	40	—	dB
960.0 ... 1460.0 MHz		35	39	—	dB
1460.0 ... 1513.0 MHz		22	28	—	dB
1648.0 ... 1710.0 MHz		22	26	—	dB
1710.0 ... 1990.0 MHz		25	33	—	dB
1990.0 ... 2300.0 MHz		25	30	—	dB
2300.0 ... 4000.0 MHz		30	38	—	dB
4000.0 ... 6000.0 MHz		20	35	—	dB



SAW Components

B9416

SAW filter

1575.42 MHz

Data sheet



### Maximum ratings

Operable temperature range	T	-40/+85	°C	
Storage temperature range	T <sub>stg</sub>	-40/+85	°C	
DC voltage	V <sub>DC</sub>	3	V	
ESD voltage	V <sub>ESD</sub>	50 <sup>1)</sup>	V	machine model, 10 pulses
Input power at				source/load impedance 50Ω/50Ω
1574.42 ... 1576.42 MHz	P <sub>IN</sub>	3	dBm	cw
50...1460, 1710...4000 MHz	P <sub>IN</sub>	15	dBm	cw
824...849, 1710...2170 MHz	P <sub>IN</sub>	25	dBm	cw

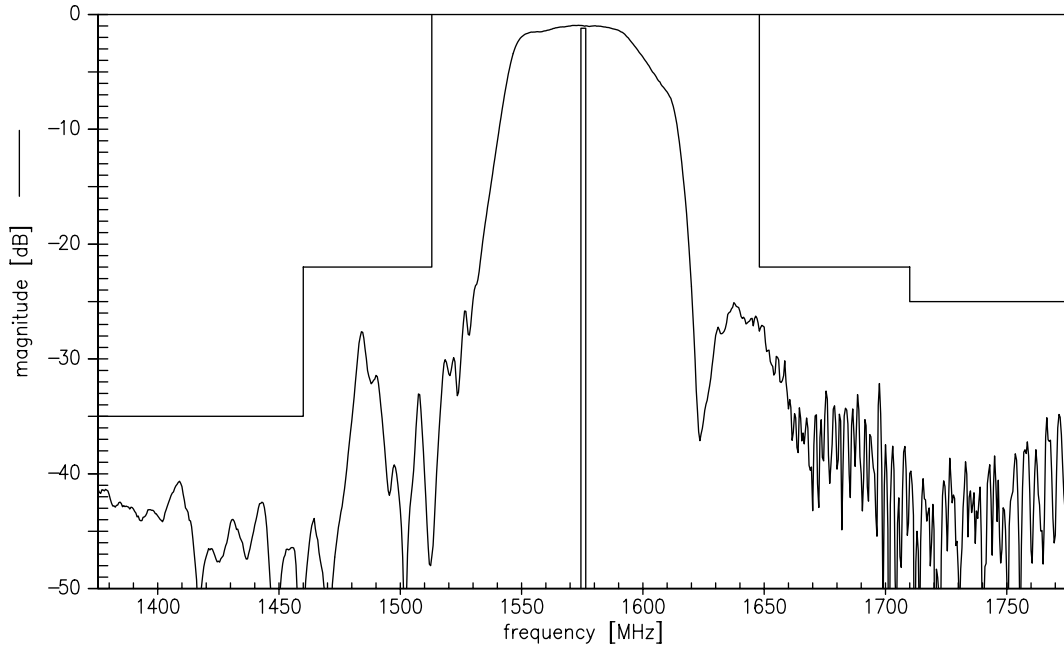
<sup>1)</sup> acc. to JESD22-A115A (machine model), 10 negative & 10 positive pulses.



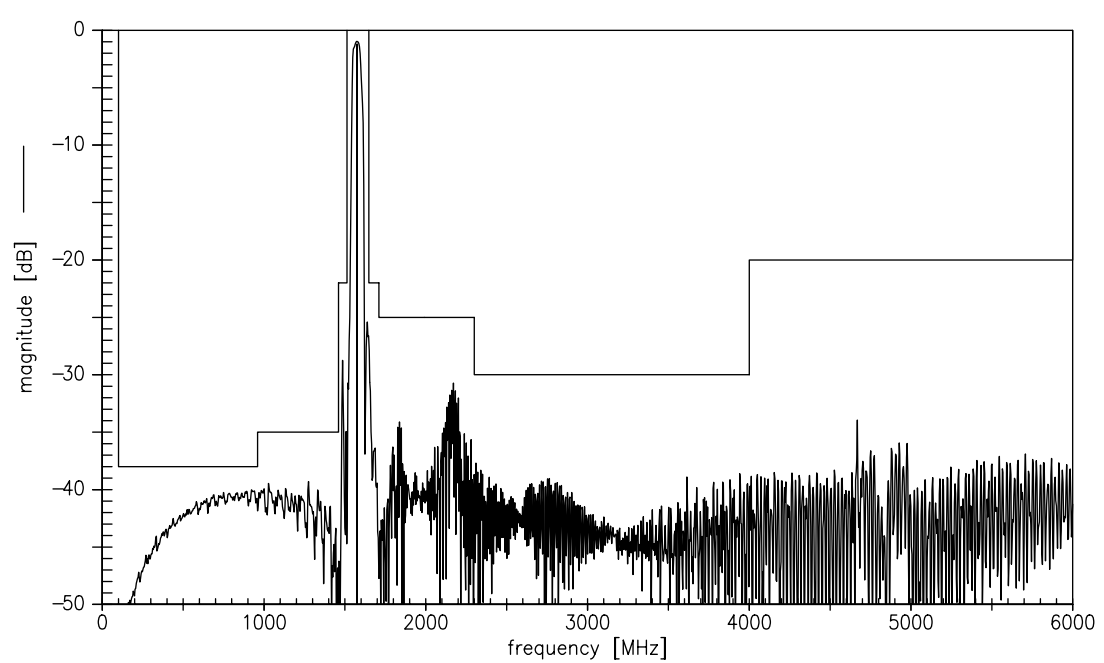
Data sheet



Transfer function (narrow band)



Transfer function (wide band)



Please read *cautions and warnings and important notes* at the end of this document.

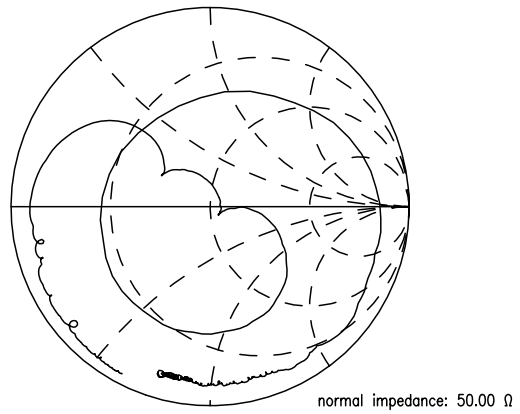
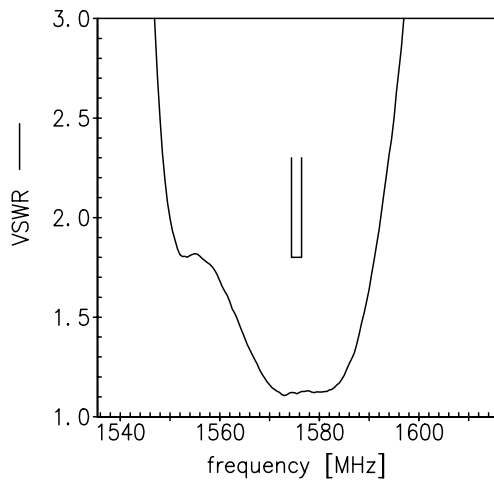


Data sheet

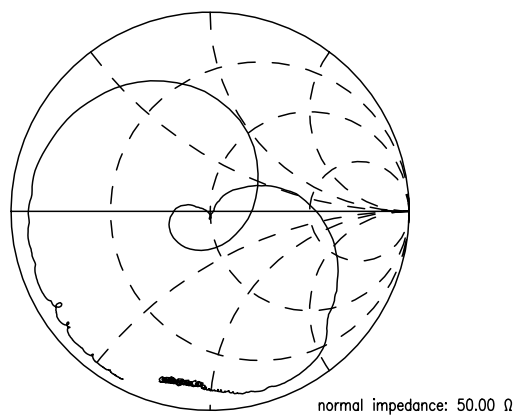
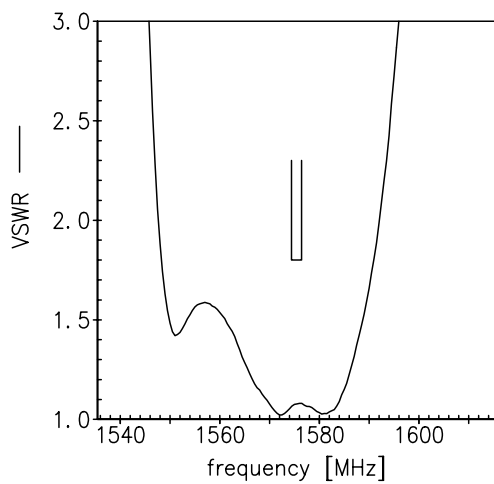


Smith charts

S<sub>11</sub> function



S<sub>22</sub> function



**SAW Components****B9416****SAW filter****1575.42 MHz**

Data sheet

**References**

<b>Type</b>	B9416
<b>Ordering code</b>	B39162B9416K610
<b>Marking and package</b>	C61157-A8-A14
<b>Packaging</b>	F61074-V8237-Z000
<b>Date codes</b>	L_1126
<b>S-parameters</b>	B9416_NB.s2p B9416_WB.s2p
<b>Soldering profile</b>	S_6001
<b>RoHS compatible</b>	defined as compatible with the following documents: "DIRECTIVE 2002/95/EC OF THE EUROPEAN PARLIAMENT AND OF THE COUNCIL of 27 January 2003 on the restriction of the use of certain hazardous substances in electrical and electronic equipment. 2005/618/EC from April 18th, 2005, amending Directive 2002/95/EC of the European Parliament and of the Council for the purposes of establishing the maximum concentration values for certain hazardous substances in electrical and electronic equipment."
<b>Moldability</b>	Before using in overmolding environment, please contact your EPCOS sales office.

**For further information please contact your local EPCOS sales office or visit our webpage at [www.epcos.com](http://www.epcos.com) .**

**Published by EPCOS AG  
Surface Acoustic Wave Components Division  
P.O. Box 80 17 09, 81617 Munich, GERMANY**

© EPCOS AG 2010. This brochure replaces the previous edition.

For questions on technology, prices and delivery please contact the Sales Offices of EPCOS AG or the international Representatives.

Due to technical requirements components may contain dangerous substances. For information on the type in question please also contact one of our Sales Offices.

Please read *cautions and warnings and important notes* at the end of this document.