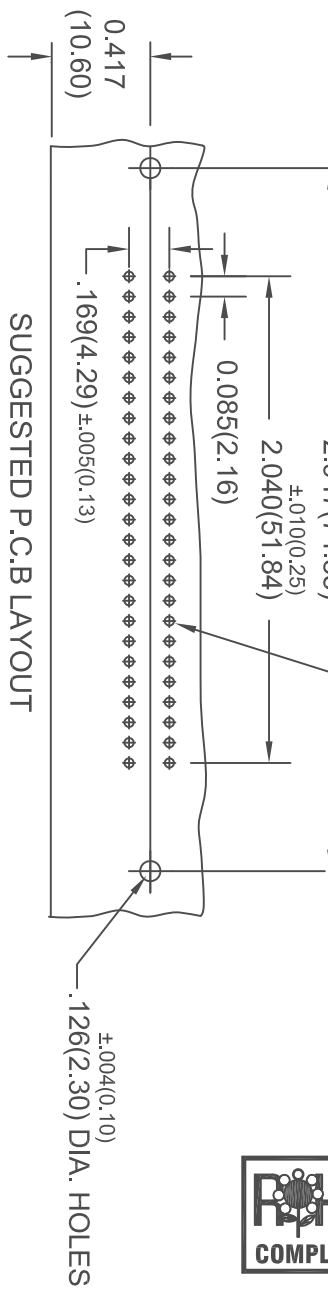
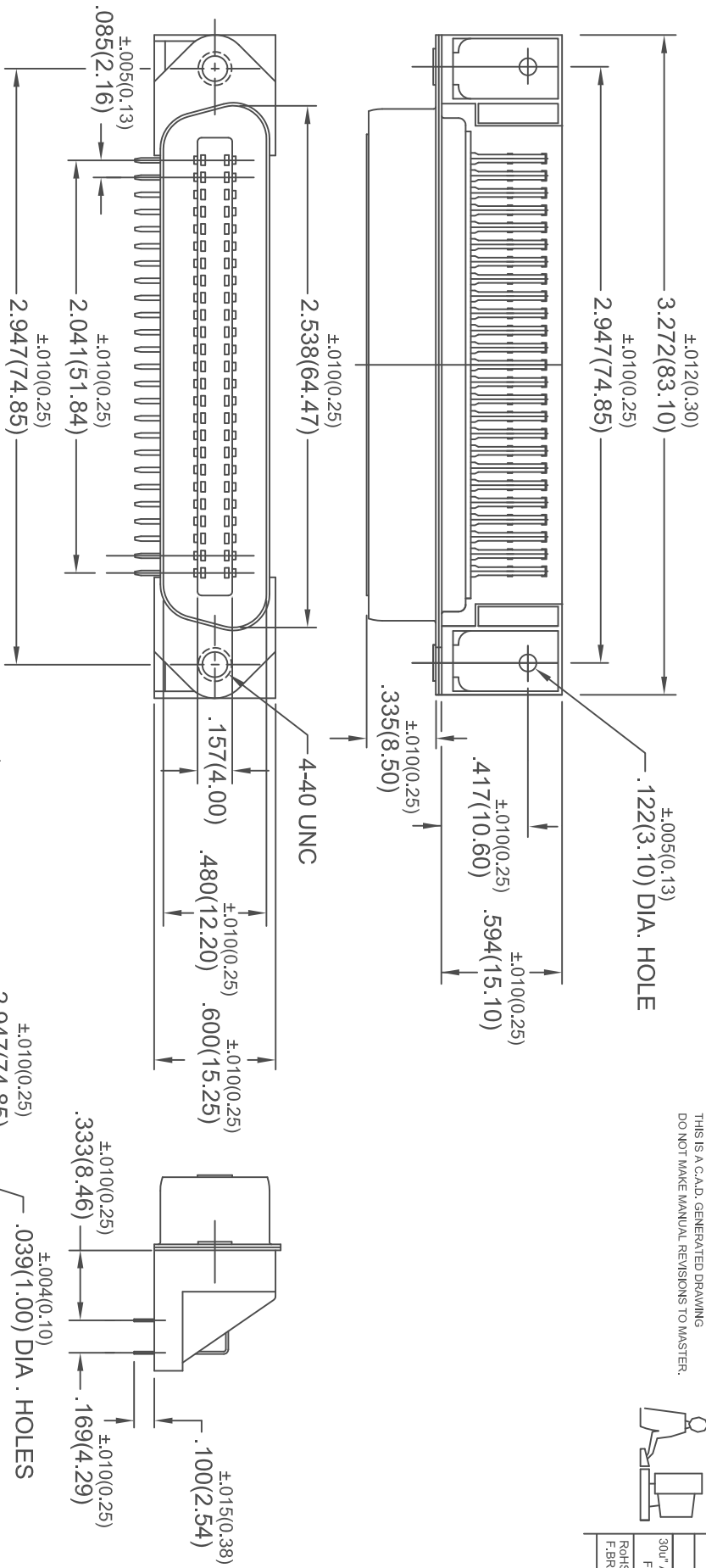


THIS IS A C.A.D. GENERATED DRAWING  
DO NOT MAKE MANUAL REVISIONS TO MASTER.



ISSUE NUMBER	ORIGINAL
①	30" ADDED TO GOLD PLATING
②	F. JAWDI, OCT. 23, 2002
③	ROHS AND TOL. ADDED F. BRONES, JUN. 04/09



THIS SERIES FULLY CONFORMS TO THE EUROPEAN UNION DIRECTIVES 2002/95/EC AND 2002/96/EC FOR ROHS COMPLIANCY.



**MATERIALS:**  
 INSULATOR : PBT COLOR BLACK; UL 94V-0 RATING  
 CONTACTS: PHOSPHOR BRONZE, 30" OF GOLD PLATED ON CONTACT AREA, TIN/LEAD ON TAILS OVER NICKEL  
 SHELL: STEEL, NICKEL PLATED

**ELECTRICAL SPECIFICATIONS**  
 CONTACT CURRENT RATING: 1 AMPERE  
 DIELECTRIC WITHSTANDING VOLTAGE: 1000 VAC rms  
 INSULATION RESISTANCE:  
 1000 MEGOHMS MIN. AT 500 VDC  
 CONTACT RESISTANCE: 30 MILLIOHMS MAX.  
 OPERATING TEMPERATURE: -55°C TO +105°C

CONNECTOR PART NO. B57-150-261-201

**50 POSITION MINIATURE RIBBON PLUG  
RIGHT ANGLE P.C.B.**



EDAC INC  
TORONTO, ONTARIO  
CANADA

THESE DRAWINGS AND SPECIFICATIONS ARE THE PROPERTY OF EDAC INC. AND SHALL NOT BE REPRODUCED OR COPIED OR USED AS THE BASIS FOR THE MANUFACTURE OR SALE OF APPARATUS WITHOUT WRITTEN PERMISSION.

ACAD REFERENCE NO.	B57-150-261-201
DRAWN: F. JAWDI	DATE: OCT. 22/02
CHECKED:	DATE:
SCALE: IN C.A.D. 1:1	SHEET 1 OF 1
DRAWING NUMBER	B57-150-261-201
	ISSUE 3