

Ceramic

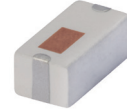
Bandpass Filter

BFCN-1801+

50Ω 1400 to 2320 MHz

The Big Deal

- Small size 3.2mm x 1.6mm
- Pass band (1400-2320 MHz)
- High rejection over wide band



CASE STYLE: FV1206-7

Product Overview

The BFCN-1801+ LTCC Band Pass Filter achieves a miniature size and high repeatability of performance. Wrap-around terminations minimize variations in performance due to parasitics. Covering 1400 to 2320 MHz, these units offer excellent rejection over a wide stopband.

Key Features

Feature	Advantages
Small Size (3.20mm x1.6 mm)	Allows for high layout density of circuit boards, while minimizing effects of parasitics.
Rejection peaks close to pass band	Provides good rejection of signals close to the pass band, for improved system performance.
Wide stopband	No regrowth at 2nd and 3rd harmonics permits filter to be used in presence of wideband undesired signals.
LTCC construction	Provides a rugged package that is well suited for tough environments including high humidity and high temperature extremes.

Ceramic Bandpass Filter

50Ω 1400 to 2320 MHz

BFCN-1801+

Features

- Small size
- Temperature stable
- Hermetically sealed
- LTCC construction

Applications

- Harmonic Rejection
- Transmitters / Receivers



Generic photo used for illustration purposes only

CASE STYLE: FV1206-7

+RoHS Compliant

The +Suffix identifies RoHS Compliance. See our web site for RoHS Compliance methodologies and qualifications

Maximum Ratings

Operating Temperature	-55°C to +100°C
Storage Temperature	-55°C to +100°C
RF Power Input	1W max.

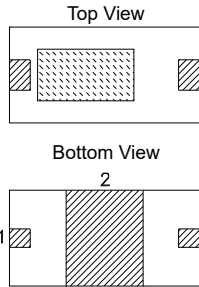
Permanent damage may occur if any of these limits are exceeded.



Electrical Specifications^{1,2} at 25°C

Parameter	F#	Frequency (MHz)	Min.	Typ.	Max.	Unit	
Pass Band	Center Frequency	—	—	1802	—	MHz	
	Insertion Loss	F1-F2	1400-2320	—	1.5	3.0	dB
	Return Loss	F1-F2	1400-2320	—	17	—	dB
Stop Band, Lower	Insertion Loss	DC-F3	DC-1000	20	25	—	dB
Stop Band, Upper	Insertion Loss	F4-F5	3110-6700	20	33	—	dB
		F5-F6	6700-10000	15	24	—	dB

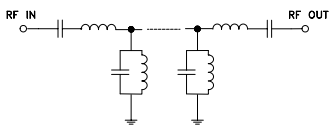
1. Measured on Mini-Circuits Characterization Test Board TB-812+.
2. This filter is not intended for use as a DC Blocking circuit element. In Application where DC voltage is present at either input or output ports, blocking capacitors are required at the corresponding RF port.



Pad Connections

Input	1
Output	3
Ground	2

Functional Schematic



Typical Performance Data at 25°C

Frequency (MHz)	Insertion Loss (dB)	Return Loss (dB)
200	69.27	0.02
500	33.17	0.16
1000	28.91	0.75
1200	7.29	4.00
1400	1.36	21.62
1800	0.94	18.65
2200	1.00	32.10
2600	4.82	4.69
3100	34.71	0.42
3500	39.25	0.24
4000	36.39	0.18
5000	33.44	0.30
6000	30.67	0.34
7000	31.32	0.41
8000	25.28	0.40

Specification Definition

