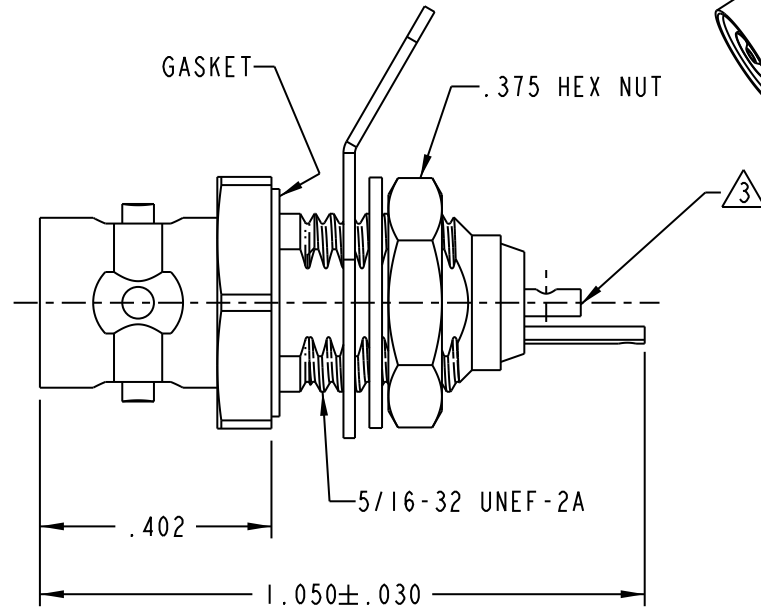
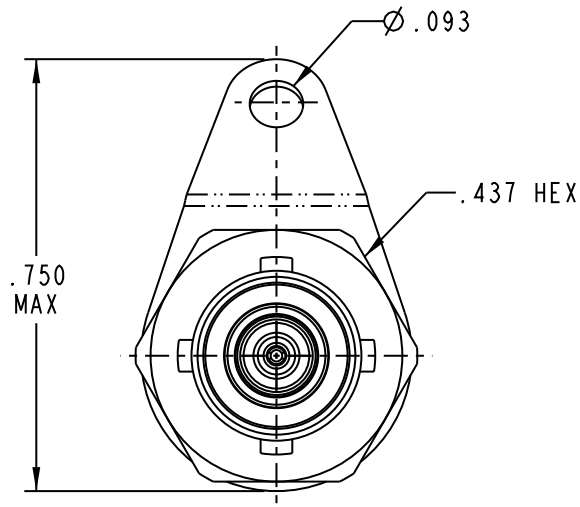
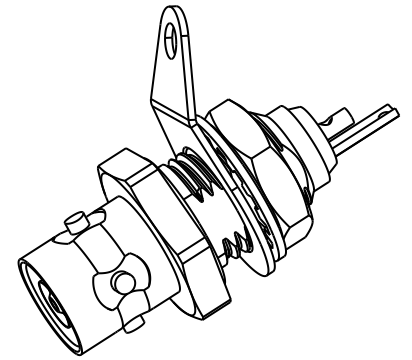


DATA CONTAINED IN THIS DOCUMENT IS PROPRIETARY TO CINCH CONNECTIVITY SOLUTIONS AND SHALL NOT BE DISCLOSED, COPIED OR USED FOR PROCUREMENT OR MANUFACTURE WITHOUT EXPRESS WRITTEN PERMISSION

REVISIONS			
REV	DESCRIPTIONS	DATE	APPROVED
K	ECO 53226	4-15-11	T. KOHLER



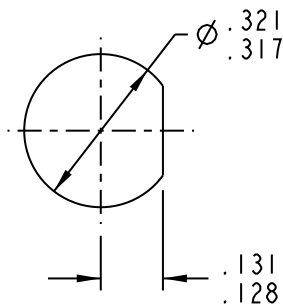
4. SUBMINIATURE TRIAXIAL SOLDER POT BULKHEAD MOUNT 4-LUG RECEPTACLE (TRS STYLE)

3 SOLDER POT ACCEPTS $\phi .034$ MAXIMUM CONDUCTOR

2. MAXIMUM PANEL THICKNESS: .187

1. FINISH: TFS-1A (NICKEL)

NOTES: UNLESS OTHERWISE SPECIFIED.



RECOMMENDED PANEL CUTOUT

INTERPRET DRAWING PER MIL-STD-100. DIMENSIONS ARE IN INCHES AND INCLUDE FINISH THICKNESS UNLESS OTHERWISE SPECIFIED.

TOL: UNLESS SPECIFIED.
 .XX ± .02
 .XXX ± .010
 ANGLE ± 1°



DRN L. MCLENNAN	6-28-11
CHK B. RYAN	6-29-11
QUALITY	
MANUF	
APPROVED	
PROJ TITLE NO. 305-0377	

MATERIAL:
 FINISH:
 DO NOT SCALE DWG

TITLE: BJ157FL			
SIZE A	CAGE CODE 14949	DRAWING NO. 305-0377	REV. K
SCALE 1/1	DATE 2-28-79	SHEET 1 OF 1	