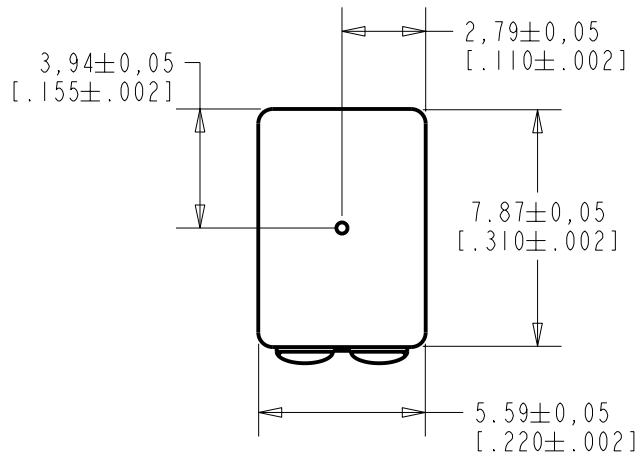
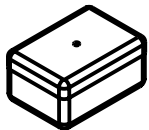
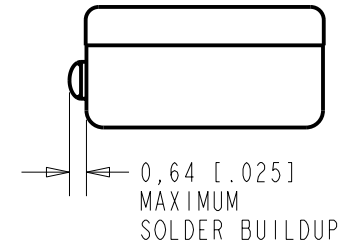
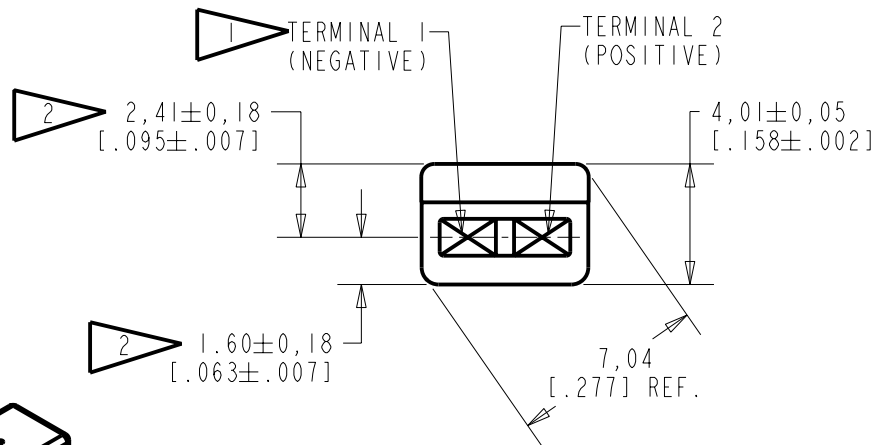


BJ-21590-000
SHT 1.1



NOTES:

- 1 A DECREASE IN PRESSURE AT THE SOUND INLET WILL CAUSE A POSITIVE VOLTAGE AT TERMINAL 2 RELATIVE TO TERMINAL 1.
- 2 LOCATED FROM TWO SURFACES FOR CUSTOMER CONVENIENCE. ONLY APPLICABLE FROM ONE SURFACE, NOT TO BE USED TOGETHER.



SCALE 2:1

NOMINAL WEIGHT
.66 GRAM

DIMENSIONS IN MILLIMETERS [INCHES]

| Revision | C.O. # | Implementation Date | RELEASE LEVEL | REVISION |
|----------|-----------|---------------------|---------------|----------|
| A | CI0103470 | 12-8-05 | Released | A |

| | | | |
|----------------------|--|---------|---------|
| SCALE: 4:1 | | DR. BY | DATE |
| DO NOT SCALE DRAWING | | CRG | 12-8-05 |
| TITLE: MICROPHONE | | CK. BY | DATE |
| OUTLINE DRAWING | | GJP | 1-5-06 |
| BJ-21590-000 | | APP. BY | DATE |
| SHT 1.1 | | GJP | 1-5-06 |

KNOWLES ELECTRONICS
ITASCA, ILLINOIS U.S.A.

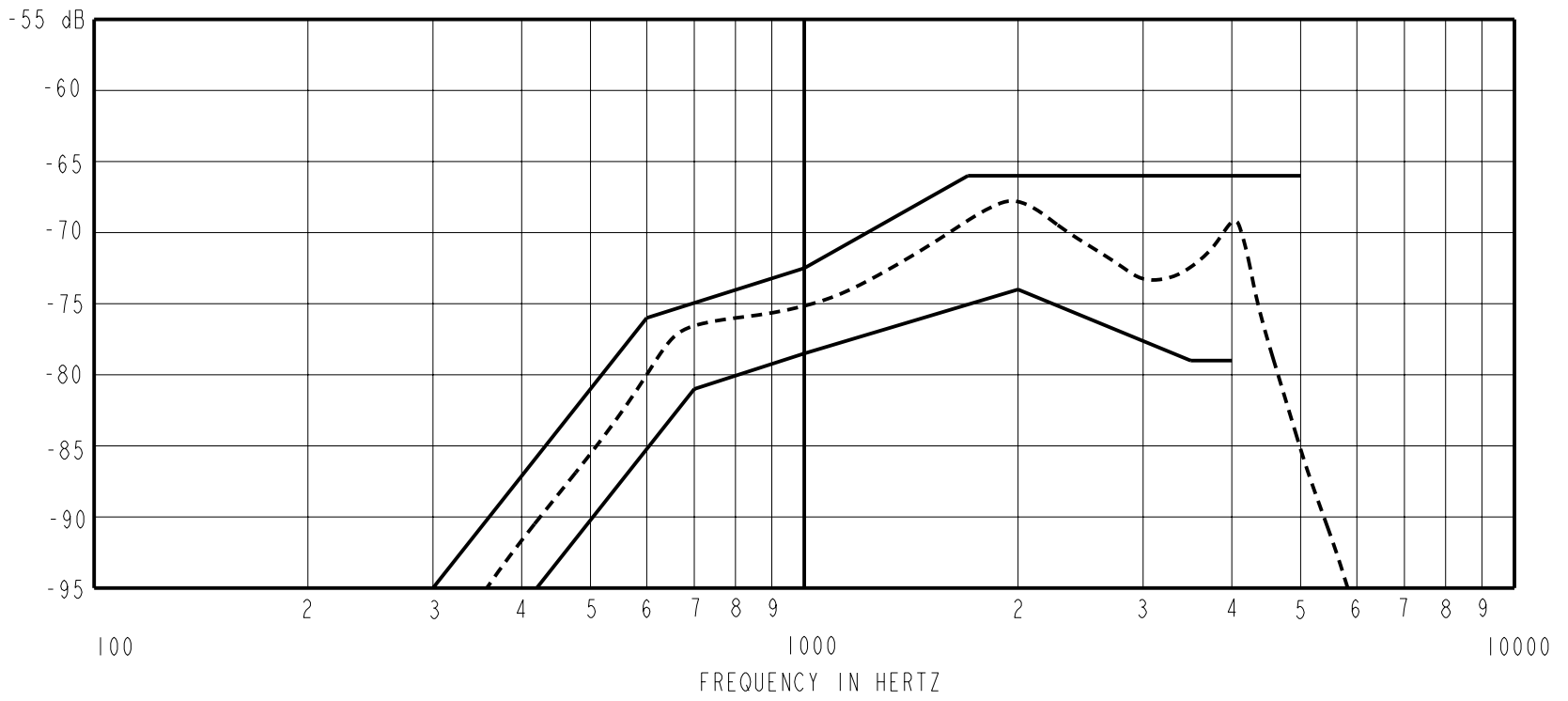
WHEN TEST LIMITS ARE USED TO ESTABLISH INCOMING INSPECTION ACCEPTANCE/REJECTION CRITERIA, CORRELATION OF TEST EQUIPMENT WITH KNOWLES IS ALSO REQUIRED FOR ELIMINATION OF EQUIPMENT AND TEST METHOD VARIATIONS.

NO DAMPING

BJ-21590-000

SHEET 2.1

SENSITIVITY IN dB RELATIVE TO 1.0 VOLT/0.1 Pa (N/M²)
FOR CONDITIONS SHOWN BELOW.



NOTES:

| | | | | | |
|------------------|--------------------|-------------|-------------|-------------------------------------|--|
| | <u>SENSITIVITY</u> | | | <u>DEVICE CONFORMITY</u> | |
| <u>FREQUENCY</u> | <u>MIN.</u> | <u>NOM.</u> | <u>MAX.</u> | <u>RANGE OF DEVIATION FROM 1KHz</u> | |

1. LOAD RESISTANCE FOR SENSITIVITY MEASUREMENT: 5000 OHMS

2. OUTPUT IMPEDANCE AT 1kHz: 3900 OHMS NOMINAL
REFERENCE IMPEDANCE: 5000 OHMS

3. NOMINAL DC RESISTANCE AT 20°C: 900 OHMS

4.

| <u>FREQUENCY</u> | <u>MIN.</u> | <u>MAX.</u> |
|------------------|-------------|-------------|
| 300 | --- | -95.0 |
| 420 | -95.0 | --- |
| 600 | --- | -76.0 |
| 700 | -81.0 | --- |
| 1000 | -78.5 | -72.5 |
| 1700 | --- | -66.0 |
| 2000 | -74.0 | --- |
| 3500 | -79.0 | --- |
| 4000 | -79.0 | --- |
| 5000 | --- | -66.0 |

5. PORT LOCATION: 0N

| Revision | C.O. # | Implementation Date | RELEASE LEVEL | REVISION |
|----------|-----------|---------------------|-----------------|----------|
| | | | Released | A |
| A | C10103470 | 12-8-05 | | |

| | | | | |
|---|--|-----|---------|---------|
| KNOWLES ELECTRONICS ITASCA, ILLINOIS U.S.A. | WHEN TEST LIMITS ARE USED TO ESTABLISH INCOMING INSPECTION ACCEPTANCE/REJECTION CRITERIA, CORRELATION OF TEST EQUIPMENT WITH KNOWLES IS ALSO REQUIRED FOR ELIMINATION OF EQUIPMENT AND TEST METHOD VARIATION | | DR. BY | DATE |
| | TITLE: MICROPHONE PERFORMANCE SPECIFICATION | | CRG | 12-8-05 |
| | | | GJP | 1-5-06 |
| | BJ-21590-000 SHT 2.1 | | APP. BY | DATE |
| | | GJP | 1-5-06 | |