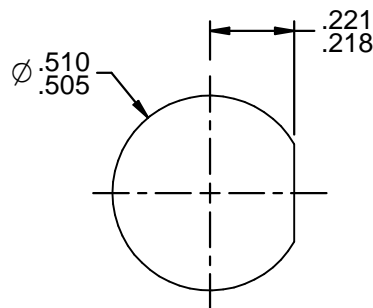


NOTES: UNLESS OTHERWISE SPECIFIED.

1. MATERIALS AND FINISH:
 - 1.1 BODY: PASSIVATED STAINLESS STEEL
 - 1.2 OUTER INSULATOR: PTFE
 - 1.3 INTERMEDIATE CONTACT: PASSIVATED STAINLESS STEEL
 - 1.4 DIELECTRIC: PTFE
 - 1.5 CENTER CONTACT: GOLD OVER BeCu
 - 1.6 TERMINALS: GOLD OVER BeCu
 - 1.7 HARDWARE: NICKEL OVER COPPER ALLOY
 - 1.8 ORING: SILICONE RUBBER
2. ELECTRICAL:
 - 2.1 IMPEDANCE: NON-CONSISTENT
 - 2.2 FREQUENCY: 500 MHz MAXIMUM
3. MAX PANEL THICKNESS: .160
4. PANEL NUT TORQUE: 35 INCH POUNDS MAXIMUM
5. LEAKAGE RATE: 1×10^{-8} ATM CC/SEC MAXIMUM OF INERT GAS (HELIUM) IAW MIL-STD-1344, REV A, METHOD 1008, TEMP. RANGE -45.6°C TO +71°C.



**RECOMMENDED
PANEL CUTOUT**

6. DIMPLE INDICATES CENTER CONTACT TAB.

	3RD ANGLE PROJECTION 	Trompetter	
	RoHS <input checked="" type="checkbox"/> 2002/95/EC	Title: BULKHEAD JACK HERMETIC SEAL, TRB, THREADED	
<small>This PROPRIETARY Document is property of Cinch Connectivity Solutions. It is confidential in nature, non-transferable, and issued with the clear understanding that it is not to be used or copied without permission and is retrievable upon demand.</small> INTERPRET DRAWING IN ACCORDANCE WITH ASME Y14.2009.	UNLESS OTHERWISE SPECIFIED UNITS: INCH .XX ±.02 .XXX ±.005 ANGLES ±2°	Model No. BJ79HS	Size A
DO NOT SCALE DRAWING		Date: 6/19/2013	Sheet 1 of 1