

# HTB

## 1/4" x 1-1/4" and 5 mm x 20 mm Panel-mount fuse holders



### Agency information

- UL Recognized: File E14853, Guide IZLT2,
- CSA: File 47235, Class 6225-01,
- VDE: Certificate 136128 (M version, 5 x 20 mm only)
- CE



### Product features

- For 1/4" x 1 1/4" and 5 mm x 20 mm fuses
- All holder bodies have the option of using 1/4" x 1 1/4" or 5 mm x 20 mm carriers
- Withstands 15 to 20 Lb-In torque to mounting nut when mounting fuse holder to panel
- High temperature, flame retardant thermoplastic meets UL 94 V-0

### Environmental compliance



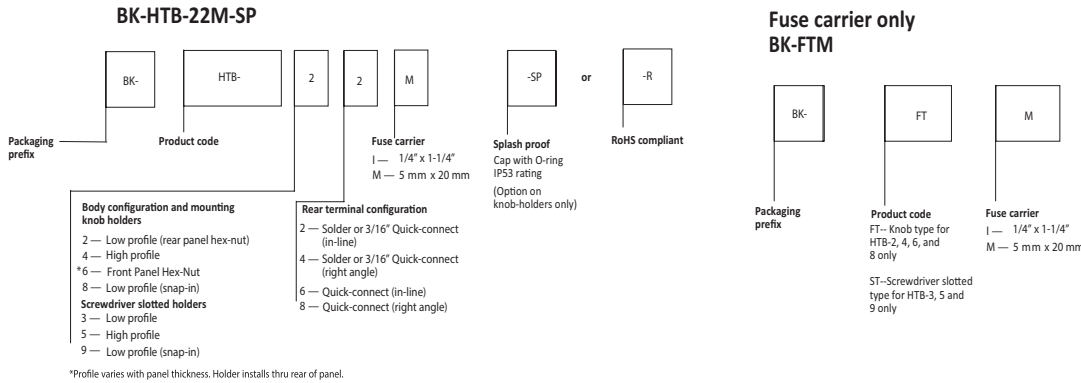
### Specifications

| Part number | UL Current rating (A) | CSA Current rating (A) | Voltage rating (V) | Fuse size     | Quick-connect |
|-------------|-----------------------|------------------------|--------------------|---------------|---------------|
| HTB-x2I     | 20                    | 16                     | 250                | 1/4" x 1-1/4" | 3/16"         |
| HTB-x4I     | 20                    | 16                     | 250                | 1/4" x 1-1/4" | 3/16"         |
| HTB-x6I     | 20                    | 16                     | 250                | 1/4" x 1-1/4" | 1/4"          |
| HTB-x8I     | 20                    | 16                     | 250                | 1/4" x 1-1/4" | 1/4"          |
| HTB-x2M     | 16                    | 16                     | 250                | 5 mm x 20 mm  | 3/16"         |
| HTB-x4M     | 16                    | 16                     | 250                | 5 mm x 20 mm  | 3/16"         |
| HTB-x6M     | 16                    | 16                     | 250                | 5 mm x 20 mm  | 1/4"          |
| HTB-x8M     | 16                    | 16                     | 250                | 5 mm x 20 mm  | 1/4"          |



Powering Business Worldwide

**Ordering details**



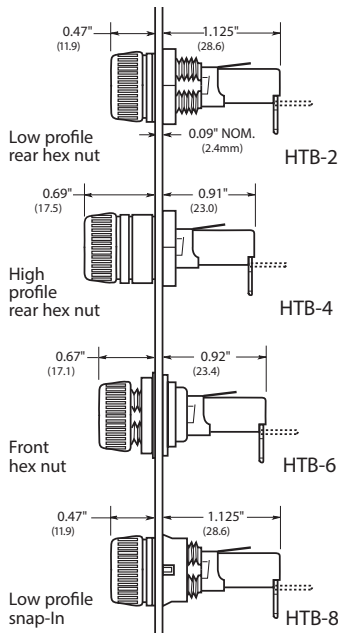
**Packaging prefix**

- Blank 10 pieces in a carton
- BK- 100 pieces in a cardboard shelf package

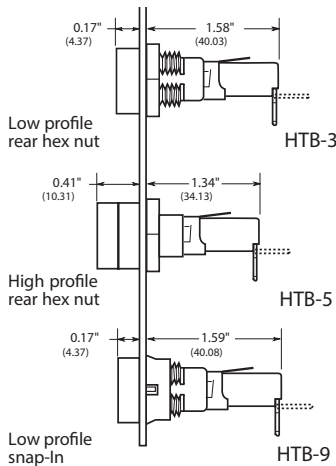
**Dimensions- inches (mm)**

**Carrier**

**Knob type**

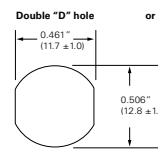


**Screwdriver type**

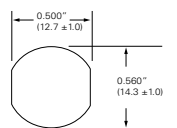


**Mounting- inches (mm)**

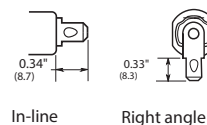
**HTB-2, -3, -4, -5 and -6**



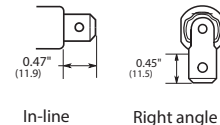
**HTB-8, and -9**



**Solder or 3/16" Quick-connect**



**1/4" Quick-connect**



**Maximum panel thickness**

| Body type | Inches | mm   |
|-----------|--------|------|
| HTB-2     | 0.30   | 7.62 |
| HTB-3     | 0.30   | 7.62 |
| HTB-4     | 0.125  | 3.18 |
| HTB-5     | 0.125  | 3.18 |
| HTB-6     | 0.30   | 7.62 |
| HTB-8     | 0.125  | 3.18 |
| HTB-9     | 0.125  | 3.18 |