

HTB

1/4" x 1-1/4" and 5 mm x 20 mm Panel-mount fuse holders



Agency information

- UL Recognized: File E14853, Guide IZLT2,
- CSA: File 47235, Class 6225-01,
- VDE: Certificate 136128 (M version, 5 x 20 mm only)
- CE



Product features

- For 1/4" x 1 1/4" and 5 mm x 20 mm fuses
- All holder bodies have the option of using 1/4" x 1 1/4" or 5 mm x 20 mm carriers
- Withstands 15 to 20 Lb-In torque to mounting nut when mounting fuse holder to panel
- High temperature, flame retardant thermoplastic meets UL 94 V-0

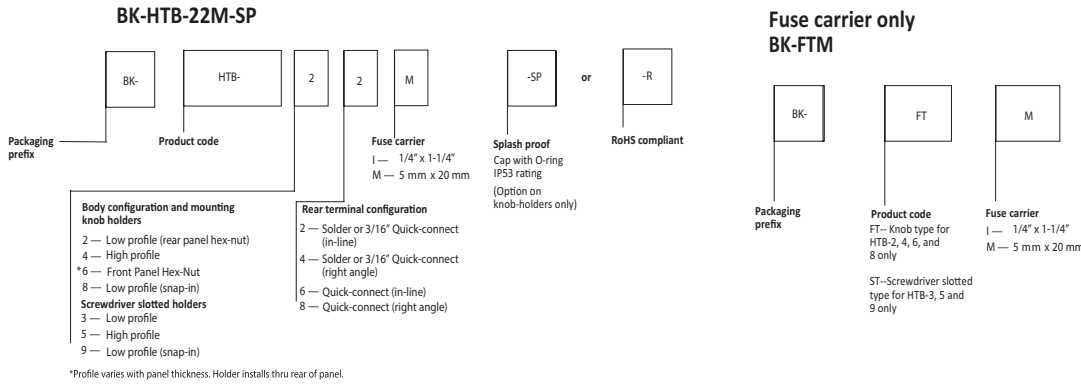
Environmental compliance



Specifications

Part number	UL Current rating (A)	CSA Current rating (A)	Voltage rating (V)	Fuse size	Quick-connect
HTB-x2I	20	16	250	1/4" x 1-1/4"	3/16"
HTB-x4I	20	16	250	1/4" x 1-1/4"	3/16"
HTB-x6I	20	16	250	1/4" x 1-1/4"	1/4"
HTB-x8I	20	16	250	1/4" x 1-1/4"	1/4"
HTB-x2M	16	16	250	5 mm x 20 mm	3/16"
HTB-x4M	16	16	250	5 mm x 20 mm	3/16"
HTB-x6M	16	16	250	5 mm x 20 mm	1/4"
HTB-x8M	16	16	250	5 mm x 20 mm	1/4"

Ordering details



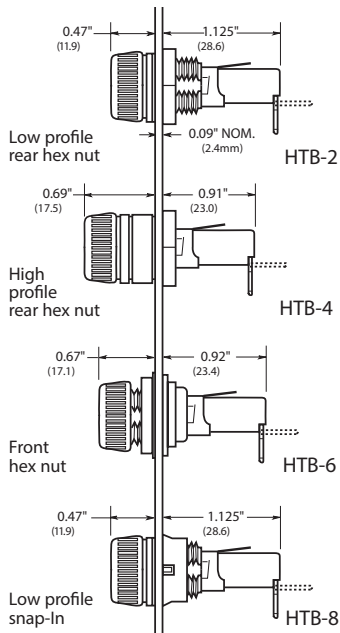
Packaging prefix

- Blank 10 pieces in a carton
- BK- 100 pieces in a cardboard shelf package

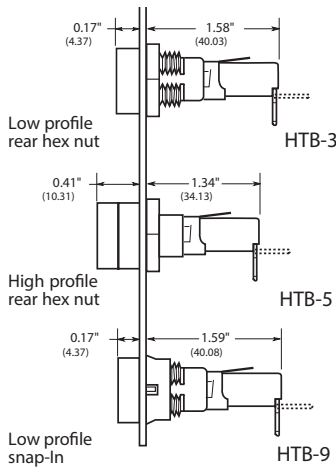
Dimensions- inches (mm)

Carrier

Knob type

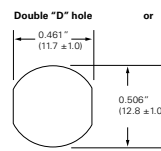


Screwdriver type

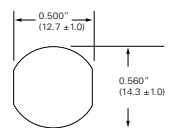


Mounting- inches (mm)

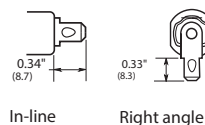
HTB-2, -3, -4, -5 and -6



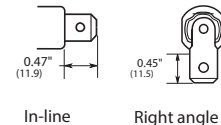
HTB-8, and -9



Solder or 3/16" Quick-connect



1/4" Quick-connect



Maximum panel thickness

Body type	Inches	mm
HTB-2	0.30	7.62
HTB-3	0.30	7.62
HTB-4	0.125	3.18
HTB-5	0.125	3.18
HTB-6	0.30	7.62
HTB-8	0.125	3.18
HTB-9	0.125	3.18