

# HTB

## 1/4" x 1-1/4" and 5 mm x 20 mm Panel-mount fuse holders



### Agency information

- UL Recognized: File E14853, Guide IZLT2,
- CSA: File 47235, Class 6225-01,
- VDE: Certificate 136128 (M version, 5 x 20 mm only)
- CE



### Product features

- For 1/4" x 1 1/4" and 5 mm x 20 mm fuses
- All holder bodies have the option of using 1/4" x 1 1/4" or 5 mm x 20 mm carriers
- Withstands 15 to 20 Lb-In torque to mounting nut when mounting fuse holder to panel
- High temperature, flame retardant thermoplastic meets UL 94 V-0

### Environmental compliance



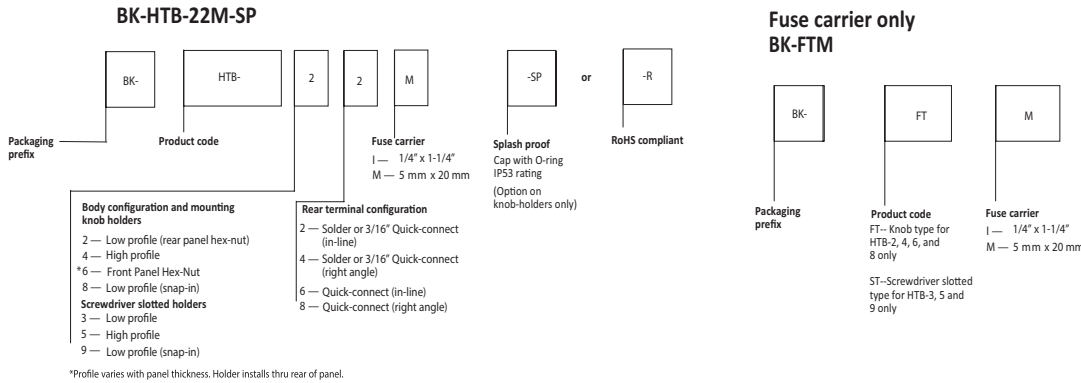
### Specifications

Part number	UL Current rating (A)	CSA Current rating (A)	Voltage rating (V)	Fuse size	Quick-connect
HTB-x2I	20	16	250	1/4" x 1-1/4"	3/16"
HTB-x4I	20	16	250	1/4" x 1-1/4"	3/16"
HTB-x6I	20	16	250	1/4" x 1-1/4"	1/4"
HTB-x8I	20	16	250	1/4" x 1-1/4"	1/4"
HTB-x2M	16	16	250	5 mm x 20 mm	3/16"
HTB-x4M	16	16	250	5 mm x 20 mm	3/16"
HTB-x6M	16	16	250	5 mm x 20 mm	1/4"
HTB-x8M	16	16	250	5 mm x 20 mm	1/4"



Powering Business Worldwide

**Ordering details**



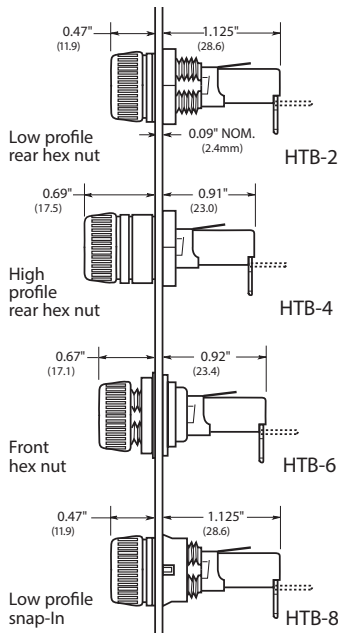
**Packaging prefix**

- Blank 10 pieces in a carton
- BK- 100 pieces in a cardboard shelf package

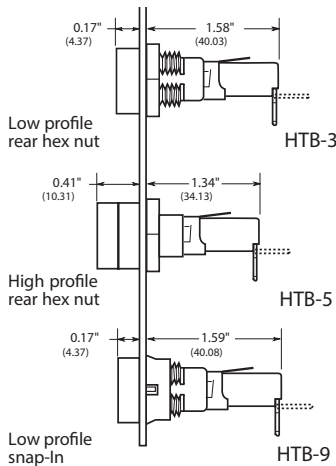
**Dimensions- inches (mm)**

**Carrier**

**Knob type**

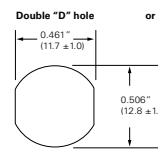


**Screwdriver type**

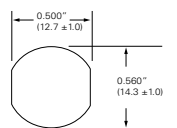


**Mounting- inches (mm)**

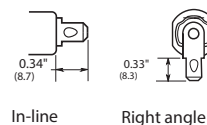
**HTB-2, -3, -4, -5 and -6**



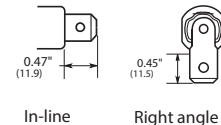
**HTB-8, and -9**



**Solder or 3/16" Quick-connect**



**1/4" Quick-connect**



**Maximum panel thickness**

Body type	Inches	mm
HTB-2	0.30	7.62
HTB-3	0.30	7.62
HTB-4	0.125	3.18
HTB-5	0.125	3.18
HTB-6	0.30	7.62
HTB-8	0.125	3.18
HTB-9	0.125	3.18