

# BNC SERIES RF CO-AXIAL CONNECTORS

## Printed-circuit-board mounting type

Part No.	HRS No.	Shape	L	ℓ 1	ℓ 2	Mounting hole dimensions
BNC-R-PC	302-0241-4	Fig.31	23.1	18.1	5.0	6-1
BNC-R-PC-2	302-0243-0	Fig.32	20.4	17.1	3.3	7-2
BNC-R-PC-7	302-0280-6	Fig.31	23.1	20.64	2.46	6-1

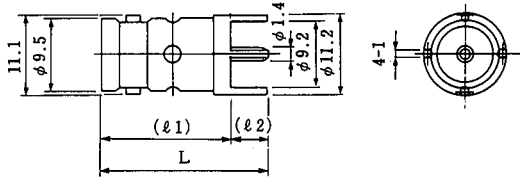


Fig.31

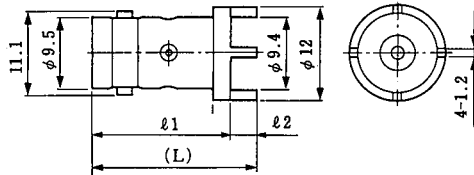


Fig.32

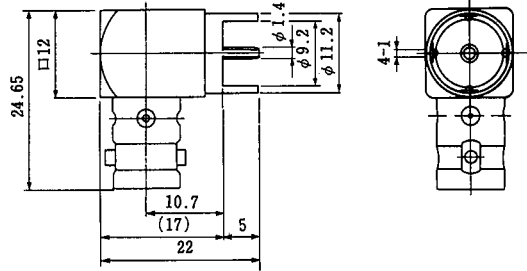


Fig.33

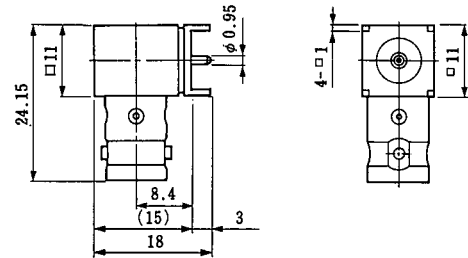


Fig.34

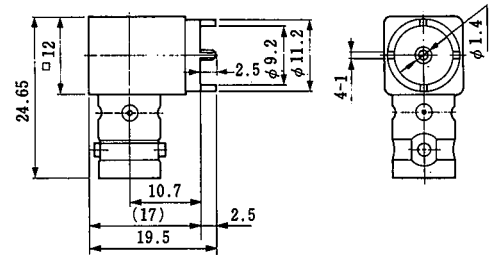


Fig.35

## Lug terminal

Part No.	HRS No.	Remrks
BNC-EL	302-0079-8	Earth Lug

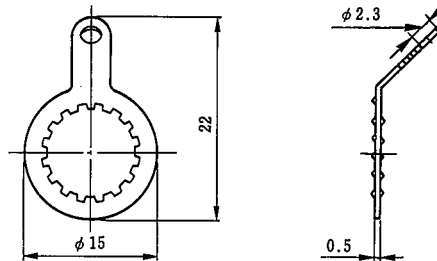


Fig.36