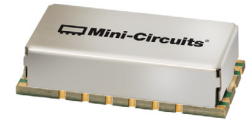


Surface Mount Bandpass Filter

BPF-F598+

50Ω 410 to 785 MHz



Generic photo used for illustration purposes only
CASE STYLE: HP1156

The Big Deal

- Broad bandwidth
- High Rejection
- Good VSWR
- Miniature shielded package

Product Overview

BPF-F598+ is a 50Ω bandpass filter in a shielded package fabricated using SMT technology. This bandpass filter covers from 410 to 785 MHz.

Key Features

Feature	Advantages
Low insertion loss	Can be used in digital cable TV networks and 4G LTE networks.
Good rejection	This enables the filter attenuate spurious signals and reject harmonics for broad frequency band
Shielded package	The small surface mount package enables the BPF-F598+ to used in compact design

Notes

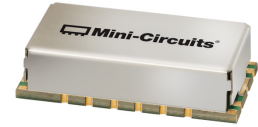
- A. Performance and quality attributes and conditions not expressly stated in this specification document are intended to be excluded and do not form a part of this specification document.
B. Electrical specifications and performance data contained in this specification document are based on Mini-Circuit's applicable established test performance criteria and measurement instructions.
C. The parts covered by this specification document are subject to Mini-Circuits standard limited warranty and terms and conditions (collectively, "Standard Terms"); Purchasers of this part are entitled to the rights and benefits contained therein. For a full statement of the Standard Terms and the exclusive rights and remedies thereunder, please visit Mini-Circuits' website at www.minicircuits.com/MCLStore/terms.jsp



Surface Mount Bandpass Filter

BPF-F598+

50Ω 410 to 785 MHz



Generic photo used for illustration purposes only
CASE STYLE: HP1156

Features

- Broad bandwidth
- Sharper cut-off
- Miniature shielded package

Applications

- Digital television
- Broad band wireless 4G LTE band
- Biomedical telemetry devise
- Wireless microphone

Electrical Specifications at 25°C

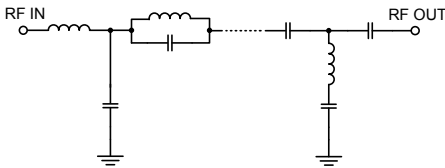
Parameter		F#	Frequency (MHz)	Min.	Typ.	Max.	Unit
Pass Band	Center Frequency	—	—	—	598	—	MHz
	Insertion Loss	F1-F2	410-785	—	2.70	4.50	dB
	VSWR	F1-F2	410-785	—	1.46	1.92	:1
Stop Band, Lower	Insertion Loss	DC-F3	DC-385	20	34	—	dB
	VSWR	DC-F3	DC-385	—	20	—	:1
Stop Band, Upper	Insertion Loss	F4-F5	825-1600	20	35	—	dB
	VSWR	F4-F5	825-1600	—	20	—	:1

Maximum Ratings

Operating Temperature	-40°C to 85°C
Storage Temperature	-55°C to 100°C
RF Power Input	1 W

Permanent damage may occur if any of these limits are exceeded.

Functional Schematic



Typical Frequency Response

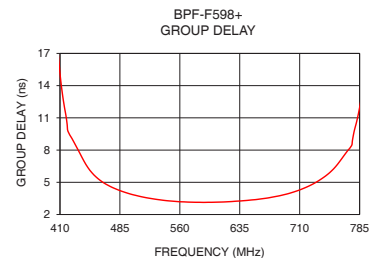
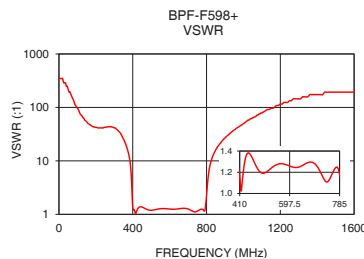
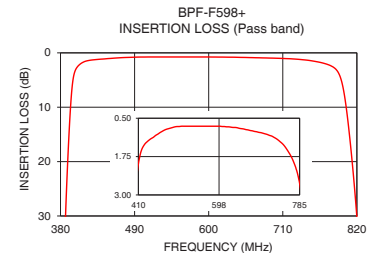
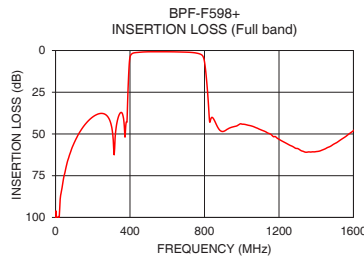


Typical Performance Data at 25°C

Frequency (MHz)	Insertion Loss (dB)	VSWR (:1)	Frequency (MHz)	Group Delay (nsec)
1	102.77	347.44	410	15.16
250	37.70	42.38	414	12.74
315	62.49	38.61	418	10.96
355	37.20	23.49	420	9.75
372	50.61	15.96	430	8.39
385	39.05	9.79	440	6.98
387	31.54	8.68	450	5.89
390	21.83	6.73	460	5.20
394	11.72	3.82	480	4.38
402	3.21	1.20	500	3.87
410	1.99	1.16	598	3.14
598	0.76	1.26	650	3.36
785	2.63	1.18	700	4.04
789	3.04	1.15	720	4.60
806	11.84	3.96	740	5.46
813	20.05	6.39	760	6.93
820	30.25	8.60	770	7.94
825	39.25	9.96	775	8.42
1015	44.24	54.29	780	10.27
1600	48.03	193.02	785	11.95

+RoHS Compliant

The +Suffix identifies RoHS Compliance. See our web site for RoHS Compliance methodologies and qualifications



Notes

- Performance and quality attributes and conditions not expressly stated in this specification document are intended to be excluded and do not form a part of this specification document.
- Electrical specifications and performance data contained in this specification document are based on Mini-Circuit's applicable established test performance criteria and measurement instructions.
- The parts covered by this specification document are subject to Mini-Circuits standard limited warranty and terms and conditions (collectively, "Standard Terms"); Purchasers of this part are entitled to the rights and benefits contained therein. For a full statement of the Standard Terms and the exclusive rights and remedies thereunder, please visit Mini-Circuits' website at www.minicircuits.com/MCLStore/terms.jsp



www.minicircuits.com P.O. Box 350166, Brooklyn, NY 11235-0003 (718) 934-4500 sales@minicircuits.com

REV.B
M174392
BPF-F598+
EDU1801
URJ
190909
Page 2 of 3