

NOTES:

1. ELECTRICAL SPECIFICATIONS:

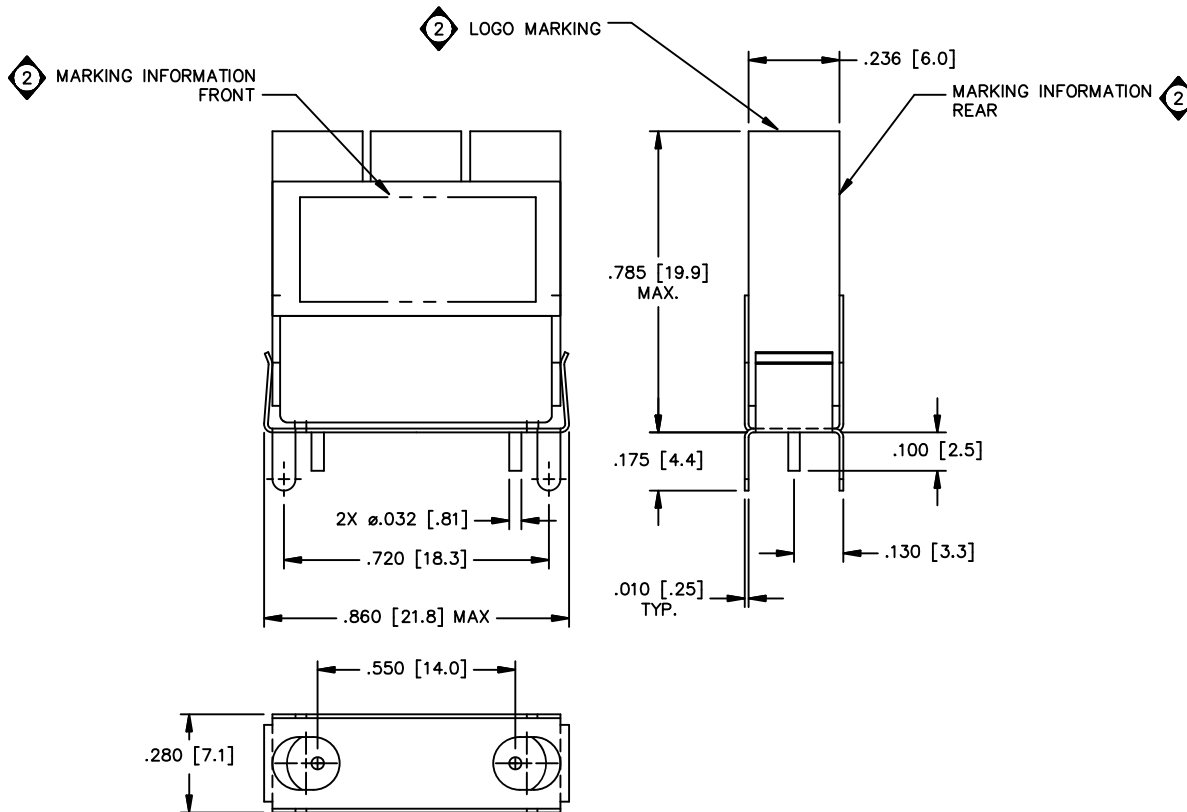
C.F. = 427.25 MHz
 INSERTION LOSS @ C.F. = 3.0 dB MIN., 5.0 dB MAX.
 IMPEDANCE: 75 OHMS IN/OUT
 RETURN LOSS = 14 dB MIN. @ 427.25 MHz
 RIPPLE = 0.2 dBc MAX. WITHIN ±0.5 MHz OF C.F.
 ATTENUATION: @ Fo: ±6 MHz @ 18 dBc MIN.
 @ Fo: ±12 MHz @ 28 dBc MIN.
 @ Fo: ±18 MHz @ 45 dBc MIN.
 @ Fo: ±50 MHz @ 40 dBc MIN.
 FROM 50 TO 300 MHz @ 35 dBc MIN.
 FROM 750 TO 862 MHz @ 30 dBc MIN.

2. ENVIRONMENTAL SPECIFICATIONS:

OPERATING TEMPERATURE: -40° TO +85° C
 STORAGE TEMPERATURE: -40° TO +90° C

3. PART MUST BE MARKED WITH C-COR PART NUMBER.

REVISIONS				
ECN	REV.	DESCRIPTION	CHNG/DATE	APPV/D/DATE
06642	1	CHANGED SHIELD DIM	MY, 2008-09-08	FG, 2008-09-08
07992	2	MARKING INFO	MDP, 2015-08-25	MPN, 2015-08-25



API TECHNOLOGIES CORP. PROPRIETARY INFORMATION
 THIS DOCUMENT IS THE SOLE PROPERTY OF API TECHNOLOGIES CORP.
 THE RELEASE OF DATA CONTAINED IN THIS DOCUMENT AND THE
 REPRODUCTION OF THIS DOCUMENT IN WHOLE OR IN PART, WITHOUT THE
 WRITTEN PERMISSION OF API TECHNOLOGIES CORP. ARE PROHIBITED.

UNLESS OTHERWISE SPECIFIED		3RD ANGLE PROJECTION		API TECHNOLOGIES CORP. 7100 Columbia Gateway Drive Columbia, MD 21046-2957 (USA)	
DESIGN	DATE	DRWNG	DATE	TITLE	REV
HY	2004-07-20	FG	2004-07-20	SALES DRAWING, BPF3-0427-005LA	0
ENGR		QA		SIZE	CASE CODE
SB	2004-07-20	SB	2004-07-20	C	67195
DO NOT SCALE DRAWING		APPROVED		DRG NO.	SHEET
				STO-4892	1 OF 1
		SCALE: 4:1			