



Surge protection for UL 508A applications



Comprehensive UL Listed open Type 1 1449 4th Edition surge protection solutions for North American applications.

Eaton's Bussmann™ series UL® Listed open Type 1 modular surge arresters feature local, *easyID*™ visual indication and standard remote contact signaling.

The unique locking system fixes the protection module to the base part. Modules can be easily replaced without tools by simply depressing the release buttons.

Integrated mechanical keying between the base and protection module helps prevent against installing an incorrect replacement module.

Features and benefits

- UL 1449 4th Edition Listed open Type 1 and CSA® component assembly SPD devices provide optimum surge protection for the United States and Canadian panel markets.
- 200 kA SCCR for demanding applications.
- Modular DIN-Rail design with module rejection feature makes it easy to install and maintain.
- *easyID* visual indication and standard remote contact signaling make status monitoring simple.
- When properly installed, IP20 finger-safe design improves electrical safety.

The need for surge protection

Today's world is full of electronic products and devices that are susceptible to damage from overvoltage surges.

Whether the cause is static discharge, lightning, or inductive load switching, overvoltage surges can quickly destroy industrial and commercial electronics such as computers and industrial controls.

Bussmann series surge protection products help provide power quality that's free from damaging surges.

Complete line of surge protection solutions



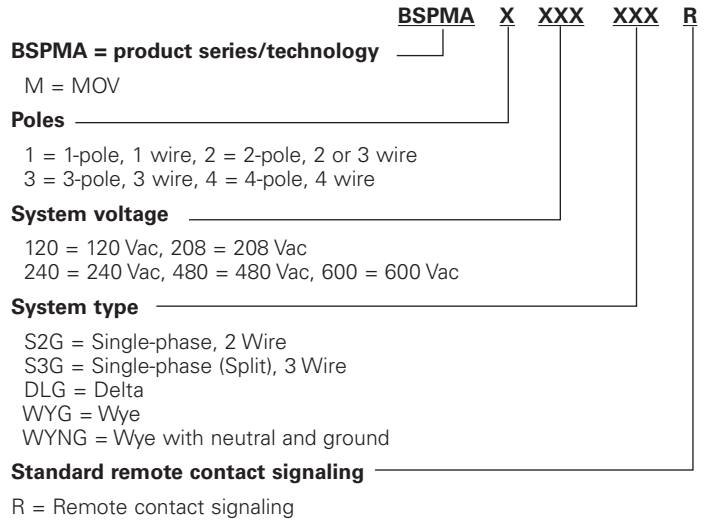
Power distribution

Control panel



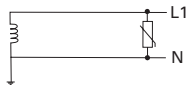
Data signal

UL-SPD part number explanation*

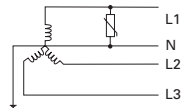


* This is not a catalog number system for configuring and ordering an SPD for a particular application. It is an explanation of the available black label high SCCR DIN-Rail SPD catalog numbers.

1-pole (2 wire) and single-phase two (2) connection points



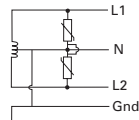
120, 240 Vac 2 wire systems



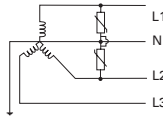
120, 277 Vac 2 wire Wye systems

Part numbers for all systems
BSPMA1120S2GR, BSPMA1240S2GR

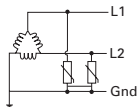
2-pole (2 wire / 3 wire) three (3) connection points



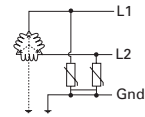
120/240 V, 240/480 Vac
Single-phase (split) center tap
BSPMA2240S3GR, BSPMA2480S3GR



120/208 V, 277/480 Vac
3 wire Wye system
BSPMA2240S3GR, BSPMA2480S3GR

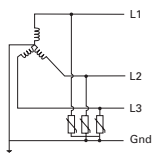


240, 480 Vac
2 wire corner grounded delta
BSPMA2240S3GR, BSPMA2480S3GR



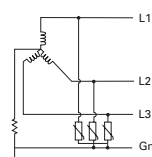
240, 480 Vac
2 wire ungrounded delta

3-pole (3 wire) 3-phase four (4) connection points



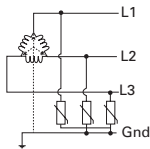
208, 480, 600 Vac

Wye 3-phase, 3 wire + ground
BSPMA3208WYGR, BSPMA3480WYGR, BSPMA3600WYGR

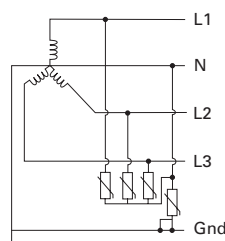


208 V, 480 V, 600 Vac

240, 480 Vac
Delta 3-phase, 3 wire + ground
BSPM3240DLG, BSPM3480DLG



4-pole (4 wire) 3-phase five (5) connection points



120/208 V, 127/220 V, 277/480 V
Wye 3-phase, 4 wire + ground
BSPMA4208WYNGR, BSPMA4480WYNGR

Eaton
1000 Eaton Boulevard
Cleveland, OH 44122
United States
Eaton.com

Bussmann Division
114 Old State Road
Ellisville, MO 63021
United States
Eaton.com/bussmannseries

© 2018 Eaton
All Rights Reserved
Printed in USA
Publication No. 3190
November 2018

Eaton, Bussmann and easyID are valuable trademarks of Eaton in the US and other countries. You are not permitted to use the Eaton trademarks without prior written consent of Eaton.

CSA is a registered trademark of the Canadian Standards Group.
UL is a registered trademark of the Underwriters Laboratories, Inc.

For Eaton's Bussmann series product information, call **1-855-287-7626** or visit: **Eaton.com/bussmannseries**

Follow us on social media to get the latest product and support information.

