
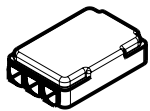
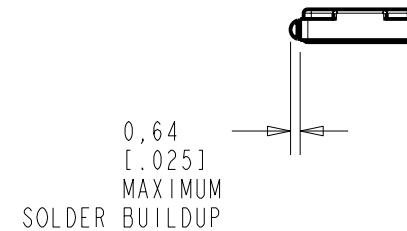
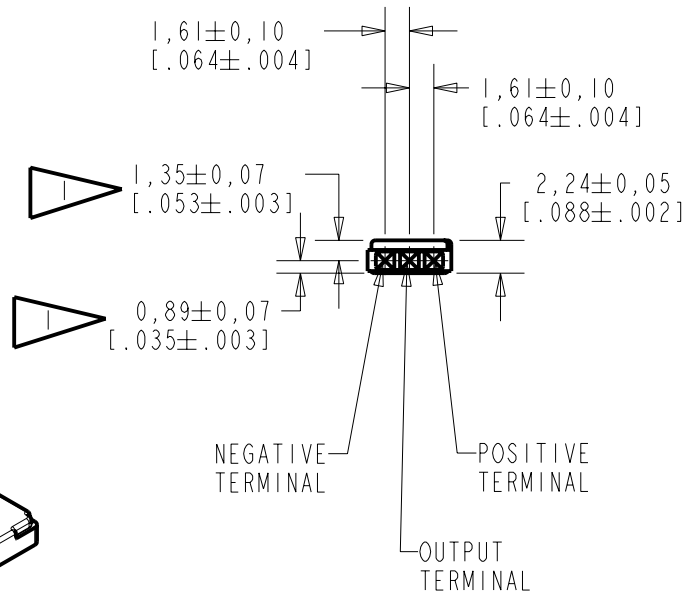
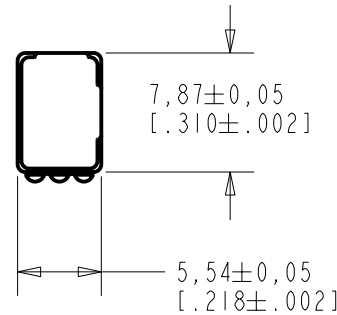


**BU-23842-000**  
SHT 1.1

NOTE:

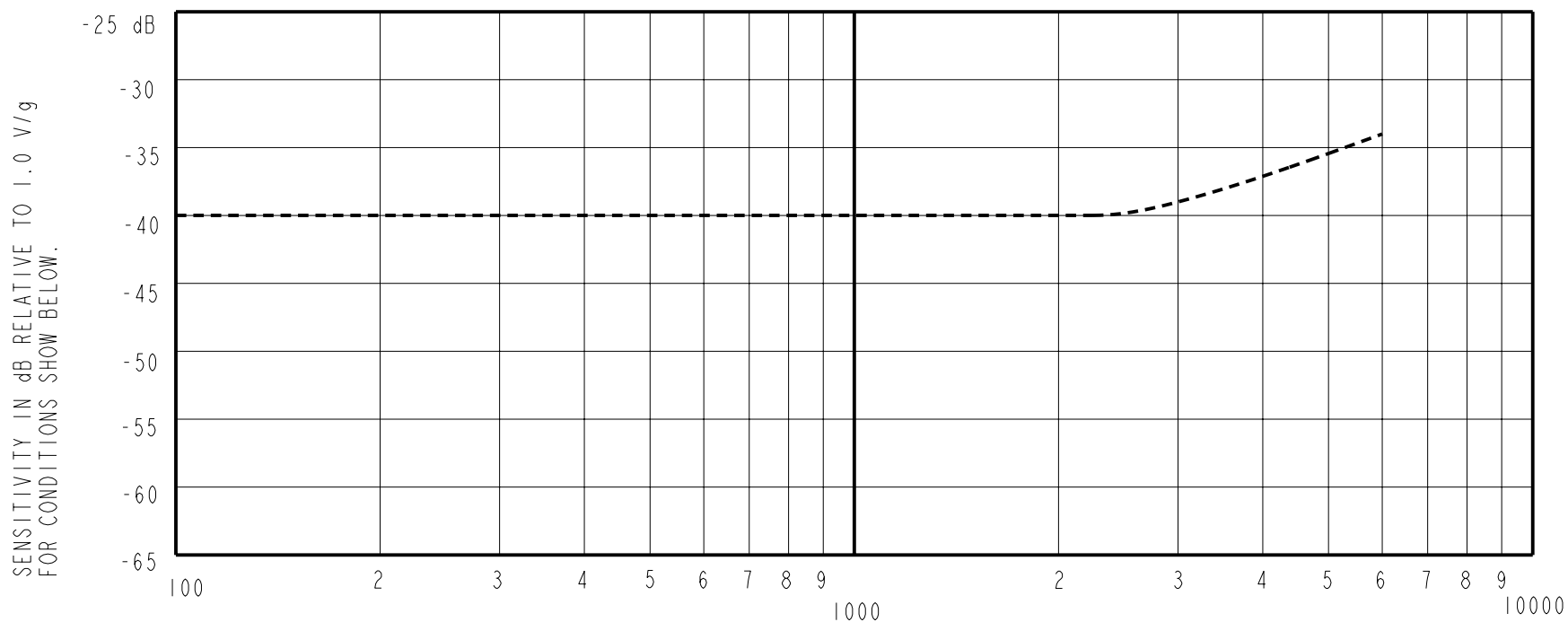
 LOCATED FROM TWO SURFACES FOR CUSTOMER CONVENIENCE. ONLY APPLICABLE FROM ONE SURFACE, NOT TO BE USED TOGETHER. HORIZONTAL LOCATION FOR TERMINAL CENTERED TO  $\pm 0,17$  [  $\pm 0,007$  ].



DIMENSIONS IN MILLIMETERS [ INCHES ]

**KNOWLES ELECTRONICS**  
ITASCA, ILLINOIS U.S.A.

| Revision                    | C.O. #    | Implementation Date | RELEASE LEVEL | REVISION |
|-----------------------------|-----------|---------------------|---------------|----------|
| C                           | MI0101515 | 7-16-07             | Released      | C        |
| B                           | MI0101175 | 9-20-06             |               |          |
| SCALE: 2:1                  |           |                     | DR. BY        | DATE     |
| DO NOT SCALE DRAWING        |           |                     | AB            | 9-20-06  |
| TITLE: VIBRATION TRANSDUCER |           |                     | CK. BY        | DATE     |
| OUTLINE DRAWING             |           |                     | GJP           | 9-25-06  |
| BU-23842-000                |           |                     | APP. BY       | DATE     |
| SHT 1.1                     |           |                     | GJP           | 9-25-06  |



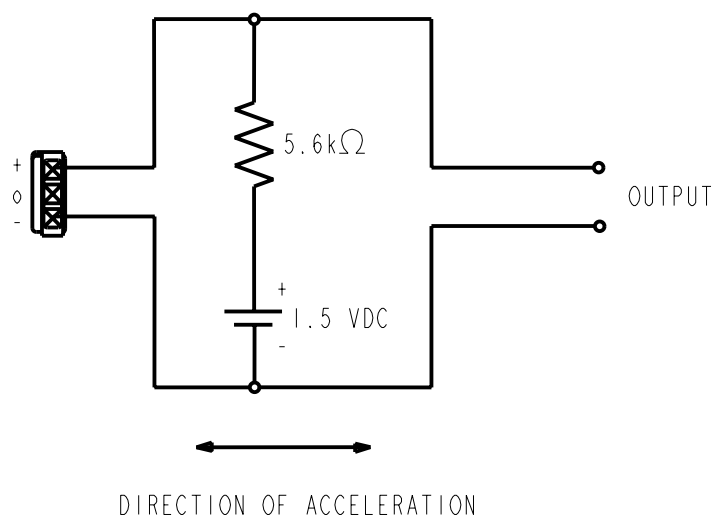
| FREQUENCY | SENSITIVITY |       |       | DEVICE CONFORMITY             |      |
|-----------|-------------|-------|-------|-------------------------------|------|
|           | MIN.        | NOM.  | MAX.  | RANGE OF DEVIATION FROM 1 kHz |      |
| 300       | ---         | -40.0 | ---   | -2.0                          | 0    |
| 1000      | -44.0       | -40.0 | -36.0 | 0                             | 0    |
| 3000      | ---         | -38.0 | ---   | 0                             | +6.0 |

NOTES:

1. ALL DATA MEASURED WITH CIRCUIT CONFIGURATION SHOWN BELOW.
2. CASE CONNECTED TO NEGATIVE TERMINAL.

| DC SUPPLY | BATTERY CURRENT DRAIN | "A" WEIGHTED NOISE (RE 1.0V) | OUTPUT IMPEDANCE OHMS (AT 1 kHz) |      |      |
|-----------|-----------------------|------------------------------|----------------------------------|------|------|
|           |                       |                              | MIN.                             | NOM. | MAX. |
| 1.5 V     | 50 $\mu$ A MAX.       | -103 dB MAX.                 | 4900                             | 5200 | 5500 |

3. TEST CONDITIONS:



| Revision | C.O. #    | Implementation Date | RELEASE LEVEL | REVISION |
|----------|-----------|---------------------|---------------|----------|
| C        | MI0101515 | 7-16-07             | Released      | C        |
| B        | MI0101175 | 9-20-06             |               |          |

**KNOWLES ELECTRONICS**  
ITASCA, ILLINOIS U.S.A.

WHEN TEST LIMITS ARE USED TO ESTABLISH INCOMING INSPECTION ACCEPTANCE/REJECTION CRITERIA, CORRELATION OF TEST EQUIPMENT WITH KNOWLES IS ALSO REQUIRED FOR ELIMINATION OF EQUIPMENT AND TEST METHOD VARIATION

TITLE: **VIBRATION TRANSDUCER** **BU-23842-000**  
PERFORMANCE SPECIFICATION **SHT 2.1**

| DR. BY  | DATE    |
|---------|---------|
| AB      | 9-20-06 |
| CK. BY  | DATE    |
| GJP     | 9-25-06 |
| APP. BY | DATE    |
| GJP     | 9-25-06 |