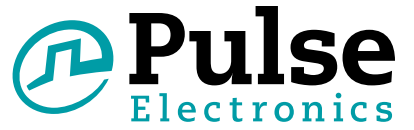


# G. Fast Transformer - 106 MHz



- G. Fast Transformer - 106MHz
- Compatible with Skipio's DFE and AFE chipsets.
- EN60950-1 Functional Isolation Compliant - 250Vrms
- RoHS-6 Compliant SMD Product
- Available on Tape and Reel

## Electrical Specifications @ 25°C - Operating Temperatures @ -40°C to +85°C

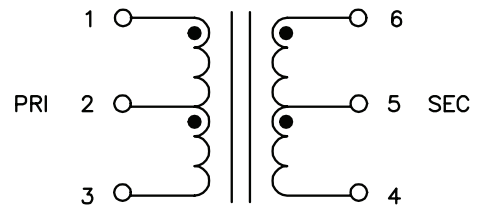
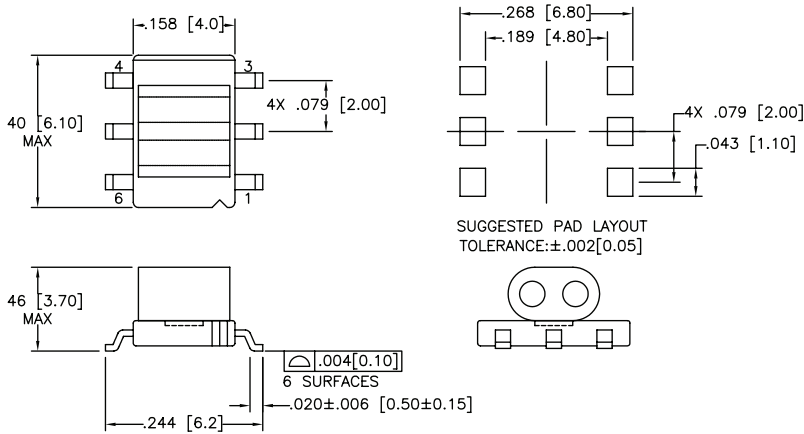
Part Number	OCL (1-3) 100KHz, 10mV (uH Min)	Turns Ratio (1-3):(6-4) 15.75KHz, 100mV +/-2%	Leakage Inductance (1-3) with (4-6) shorted, 100KHz, 10mV (uH Max)	CWW Pri to Sec 100KHz, 100mV (pF Max)	DCR (1-3) (Ω Max)	DCR (4-6) (Ω Max)	IL 1MHz to 106MHz (dB Max)	Isolation Voltage (Pri to Sec) (Vrms, 2 secs)
BX4503NL*	60	1.25 : 1	0.3	10	0.3	0.19	1.0	1500
BX4504NL*	60	1.25 : 1	0.3	10	0.3	0.19	1.0	1500
BX4506NL*	60	1CT : 1CT	0.3	10	0.3	0.19	1.0	1500

\* To order on tape and reel, place a "T" after the part number i.e. BX4503NLT, BX4504NLT, or BX4506NLT.

## Mechanicals

## Schematics

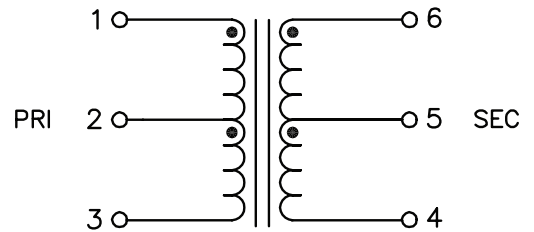
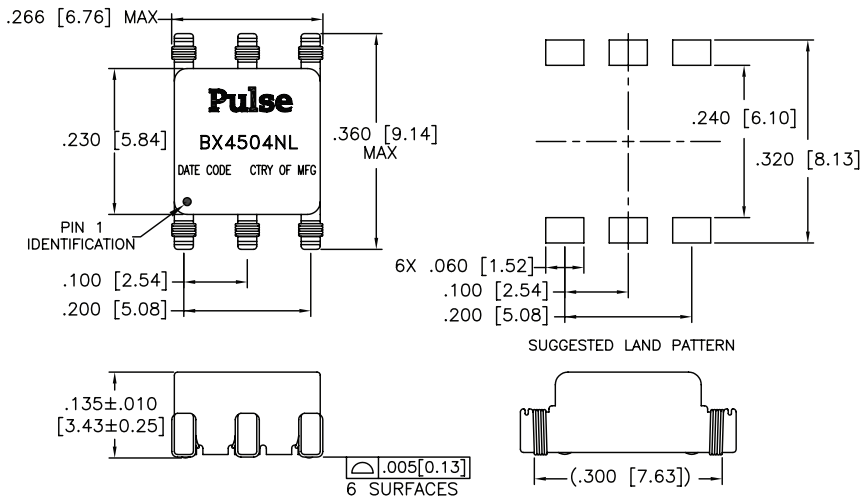
### BX4503NL



Dimensions: Inches [mm]. Tolerance: .XX  
±.010 [0.25]; .XXX ±0.008 [0.20].

Pan Size: 140pcs/Tray; 850pcs/Tape & Reel.

### BX4504NL



Dimensions: Inches [mm]. Tolerance: .XX  
+/- .010 [0.25]; .XXX +/- 0.005 [0.13].

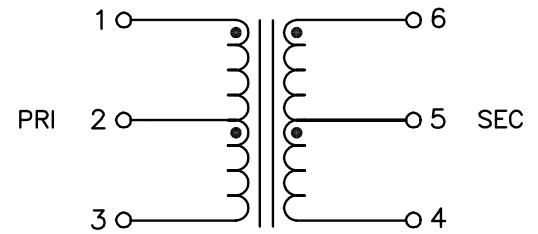
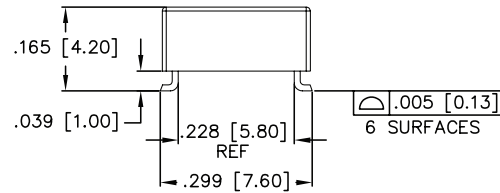
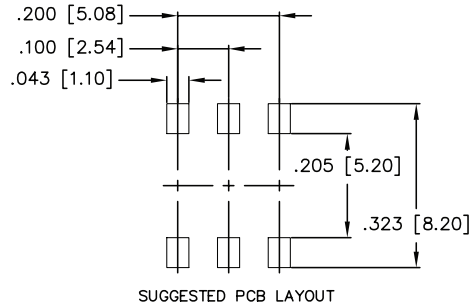
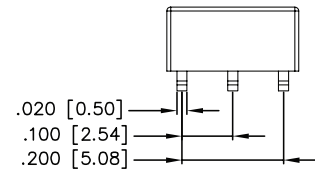
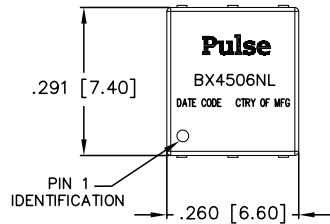
Pan Size: 60pcs/Tray; 800pcs/Tape & Reel.

# G. Fast Transformer - 106 MHz

## Mechanicals

## Schematics

### BX4506NL



Dimensions: Inches [mm]. Tolerance: .XX  
+/- .010 [0.25]; .XXX +/- 0.005 [0.13].

Pan Size: 60pcs/Tray; 800pcs/Tape & Reel.

Pulse Part Number	Sckipio DFE	Sckipio AFE
BX4503NL	SCK1001	SCK1002
BX4504NL	SCK1001	SCK1002
BX4506NL	SCK3001	SCK1002

## For More Information

**Pulse Worldwide Headquarters**  
12220 World Trade Drive  
San Diego, CA  
92128  
U.S.A.

Tel: 858 674 8100  
Fax: 858 674 8262

**Pulse Europe**  
Einsteinstrasse 1  
D-71083 Herrenberg  
Germany

Tel: 49 7032 78060  
Fax: 49 7032 7806 135

**Pulse China Headquarters**  
B402, Shenzhen Academy of  
Aerospace Technology Bldg.  
10th Kejinan Road  
High-Tech Zone  
Nanshan District  
Shenzen, PR China  
518057  
Tel: 86 755 33966678  
Fax: 86 755 33966700

**Pulse North China**  
Room 2704/2705  
Super Ocean Finance  
Ctr.  
2067 Yan An Road  
West  
Shanghai 200336  
China  
Tel: 86 21 62787060  
Fax: 86 2162786973

**Pulse South Asia**  
135 Joo Seng Road  
#03-02  
PM Industrial Bldg.  
Singapore 368363  
Tel: 65 6287 8998  
Fax: 65 6287 8998

**Pulse North Asia**  
3F, No. 198  
Zhongyuan Road  
Zhongli City  
Taoyuan County 320  
Taiwan R. O. C.  
Tel: 886 3 4356768  
Fax: 886 3 4356823 (Pulse)  
Fax: 886 3 4356820 (FRE)

Performance warranty of products offered on this data sheet is limited to the parameters specified. Data is subject to change without notice. Other brand and product names mentioned herein may be trademarks or registered trademarks of their respective owners. © Copyright, 2016. Pulse Electronics, Inc. All rights reserved.