



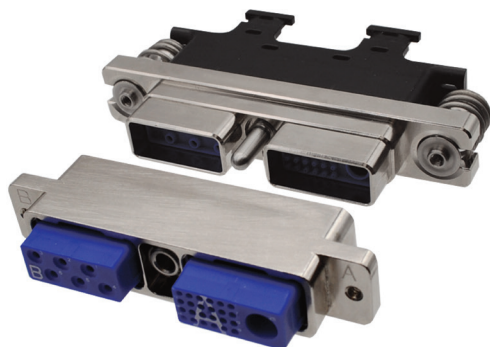
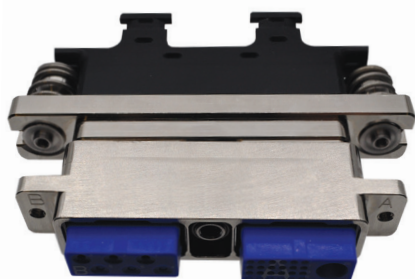
# Galley Connectors

ARINC 810

## Modular Connector for Commercial Aerospace

The C-ENX™ series offers a wide range of solutions based on combining a large variety of shells, inserts and contacts. The series is standardized with the specifications found in EN4644.

Designed for commercial aerospace cabin interiors, the C-ENX™ Galley Connectors include floating mounting hardware for blind mating and guaranteeing a fully sealed connection and avoids improper mating. The Galley Connector inserts accommodate 6 power contacts, 24 signal contacts and can include a Twinax connector for CAN data bus connectors. The ARINC 810 standard is an agreed upon specification adopted by operators and manufacturers of microwave ovens, refrigerators, chillers, trash compactors and other equipment utilized in commercial aerospace galleys.



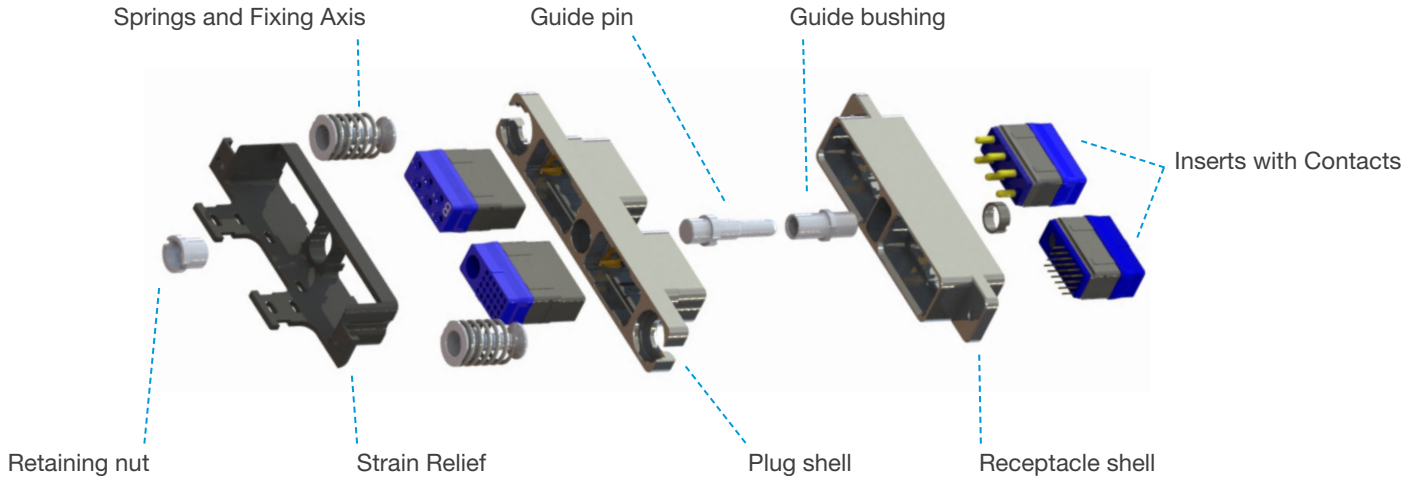
## C-ENX™ Galley Connector Features

- Spring floating mounting hardware for compensating misalignment of equipment to cabinet
- Guide pin and socket centered in connectors to position blind mates
- Nickel plated shells to protection against corrosion
- Aluminum shells to reduce weight while providing mechanical protection
- Modular inserts to reduce manufacturing and operating costs
- Standardized contacts to improve availability
- Interchangeable and intermateable parts
- Stackable shells do not require additional space for locking and unlocking connectors

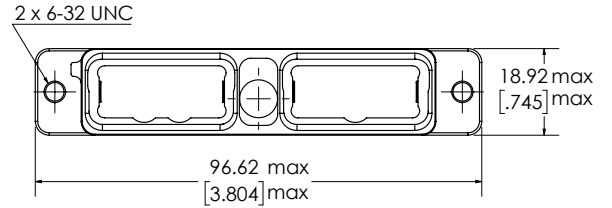
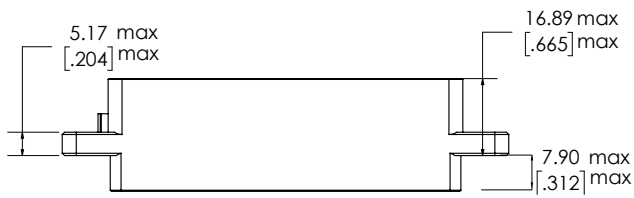
## C-ENX™ Product Family Features

- Low weight connector with high density contact arrangements
- Modular inserts can be easily replaced and wire separated
- Wide range of inserts for variety of connector sizes and types
- Common panel cut-out to simplify connector layout and construction
- Standard mil-spec tools for contact crimping and contact insertion/extraction
- Field replaceable sub-assemblies

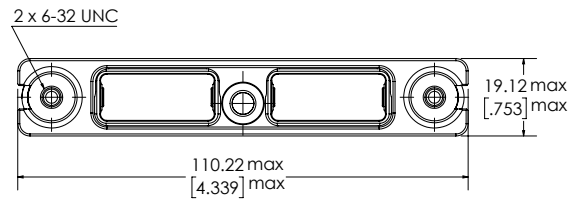
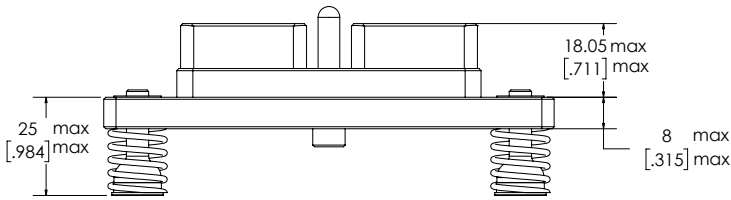
# Specifications and Drawings



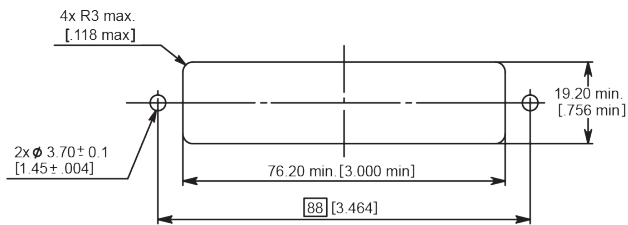
## Receptacle - Front Mount



## Plug - Rear Mount



## Receptacle - Panel Cut-Out Front Mount



## Plug - Panel Cut-Out Rear Mount Plug

