

TINA-W

~50° wide beam

SPECIFICATION:

Dimensions	Ø 16.0 mm
Height	8.6 mm
Fastening	glue
ROHS compliant	yes ⓘ

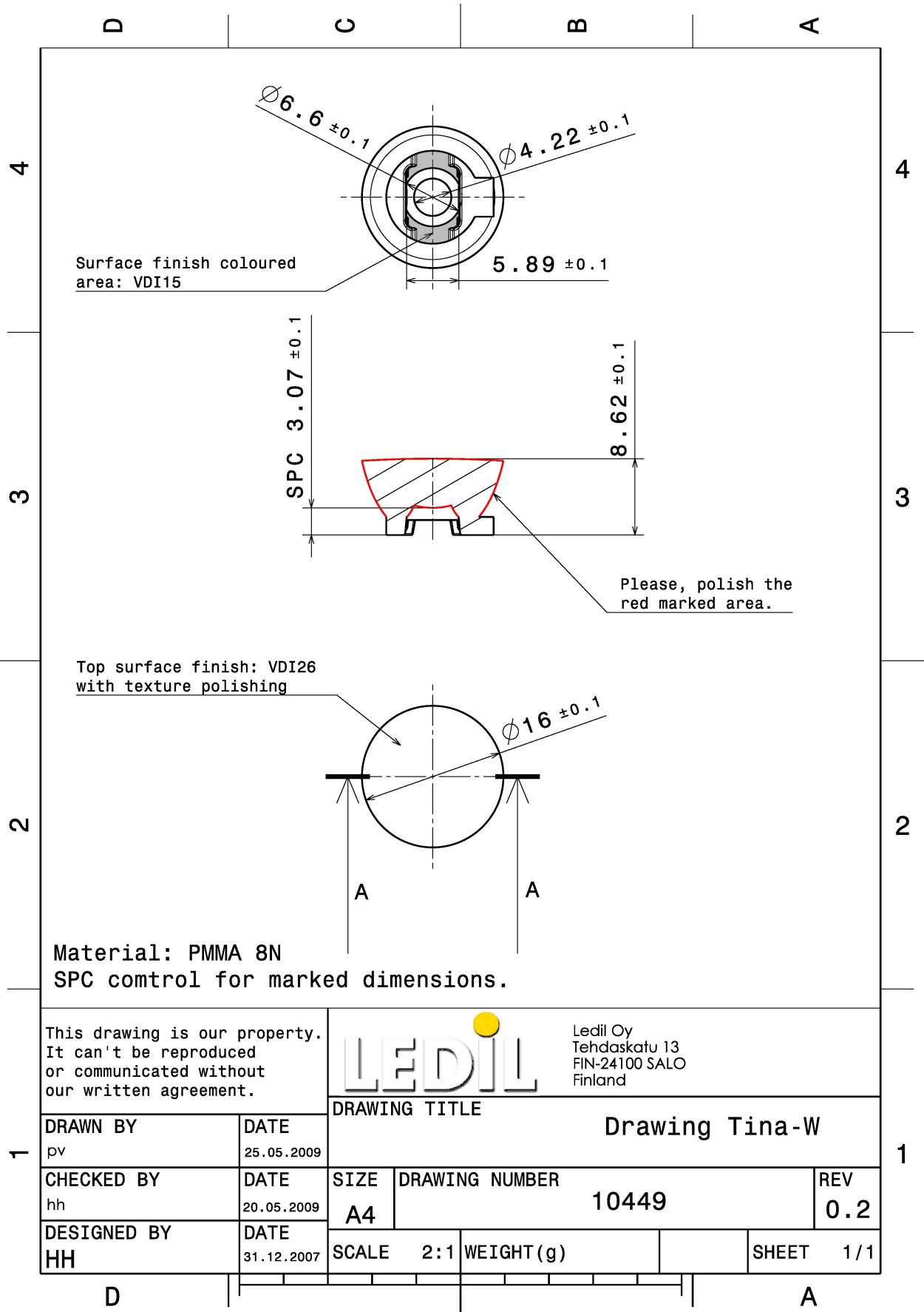
MATERIALS:

Component	Type	Material	Colour	Finish
TINA-W	Single lens	PMMA	clear	

ORDERING INFORMATION:

Component	Qty in box	MOQ	MPQ	Box weight (kg)
C10449_TINA-W » Box size: 300 x 250 x 250 mm	2880	480	480	4.2





See also our general installation guide: www.ledil.com/installation_guide

OPTICAL RESULTS (MEASURED):

OSRAM
Opto Semiconductors

LED	Golden Dragon+
FWHM / FWTM	71.0° / 99.0°
Efficiency	89 %
Peak intensity	0.6 cd/m
LEDs/each optic	1
Light colour	White
Required components:	