

## GT4-W

~40° wide beam

### TECHNICAL SPECIFICATIONS:

Dimensions	Ø 35.0 mm
Height	9 mm
Fastening	glue, pin
ROHS compliant	yes ⓘ

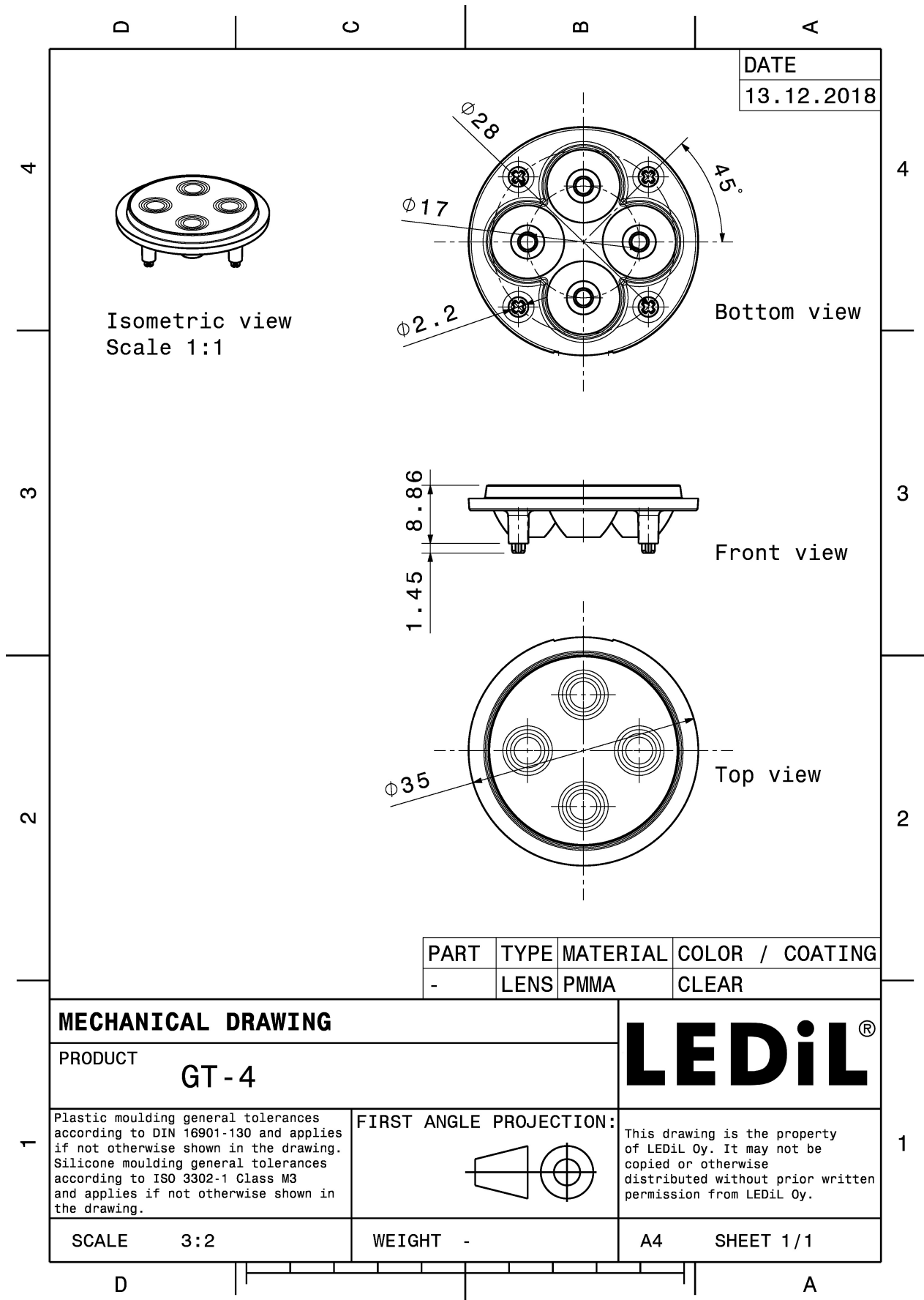


### MATERIAL SPECIFICATIONS:

Component	Type	Material	Colour	Finish
GT4-W	Multi-lens	PMMA	clear	

### ORDERING INFORMATION:

Component	Qty in box	MOQ	MPQ	Box weight (kg)
C10923_GT4-W » Box size: 300 x 250 x 250 mm	864	144	144	4.7

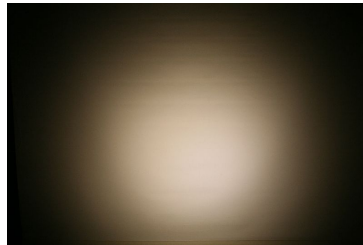


See also our general installation guide: [www.ledil.com/installation\\_guide](http://www.ledil.com/installation_guide)

### PHOTOMETRIC DATA (MEASURED):

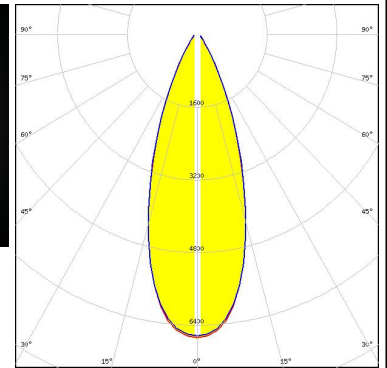
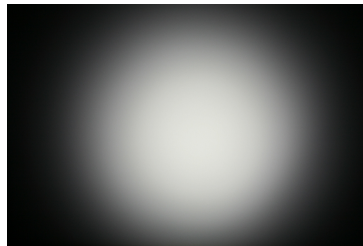
#### CREE LED

LED XB-D  
 FWHM / FWTM 36.0°  
 Efficiency 91 %  
 Peak intensity 1.6 cd/lm  
 LEDs/each optic 1  
 Light colour White  
 Required components:



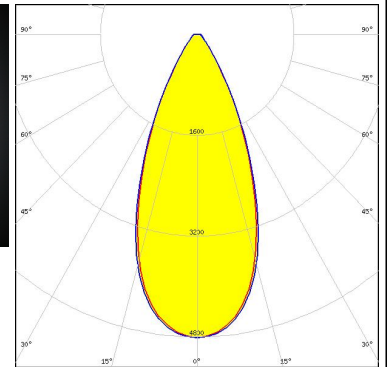
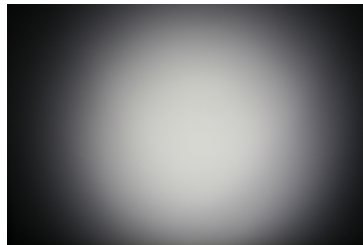
#### CREE LED

LED XP-E  
 FWHM / FWTM 37.0° / 67.0°  
 Efficiency 87 %  
 Peak intensity 1.7 cd/lm  
 LEDs/each optic 1  
 Light colour White  
 Required components:



#### CREE LED

LED XP-G  
 FWHM / FWTM 45.0° / 76.0°  
 Efficiency 87 %  
 Peak intensity 1.2 cd/lm  
 LEDs/each optic 1  
 Light colour White  
 Required components:



#### LUMILEDS

LED LUXEON A  
 FWHM / FWTM 41.0° / 74.0°  
 Efficiency %  
 LEDs/each optic 1  
 Light colour White  
 Required components:

### PHOTOMETRIC DATA (MEASURED):

#### LUMILEDS

LED LUXEON Rebel ES  
FWHM / FWTM 33.0° / 60.0°  
Efficiency 89 %  
Peak intensity 2 cd/lm  
LEDs/each optic 1  
Light colour White  
Required components:

#### OSRAM

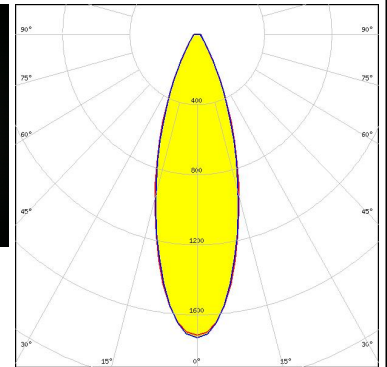
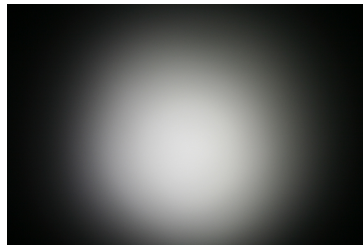
Opto Semiconductors

LED OSLOM SSL 150  
FWHM / FWTM 36.0° / 63.0°  
Efficiency 87 %  
Peak intensity 1.8 cd/lm  
LEDs/each optic 1  
Light colour White  
Required components:

#### OSRAM

Opto Semiconductors

LED OSLOM SSL 80  
FWHM / FWTM 33.0° / 66.0°  
Efficiency 91 %  
Peak intensity 1.7 cd/lm  
LEDs/each optic 1  
Light colour White  
Required components:



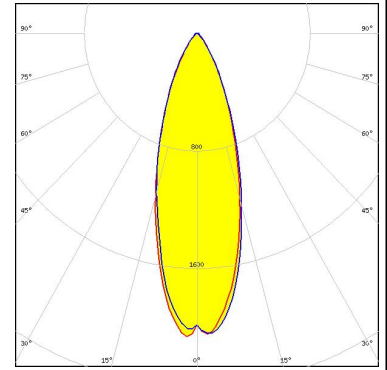
#### SHARP

LED Double Dome (GM2BB)  
FWHM / FWTM 42.0°  
Efficiency %  
LEDs/each optic 1  
Light colour White  
Required components:

### PHOTOMETRIC DATA (SIMULATED):

#### OSRAM Opto Semiconductors

LED Synios P2720 1/4 mm  
FWHM / FWTM 33.0° / 67.0°  
Efficiency 94 %  
Peak intensity 2.1 cd/lm  
LEDs/each optic 1  
Light colour White  
Required components:



#### SEOLUX SEOUL SEMICONDUCTOR

LED Z5  
FWHM / FWTM 36.0°  
Efficiency %  
LEDs/each optic 1  
Light colour White  
Required components: