

SATU-M

~30° medium beam

SPECIFICATION:

Dimensions	Ø 21.8 mm
Height	8.9 mm
Fastening	glue, pin
ROHS compliant	yes ⓘ

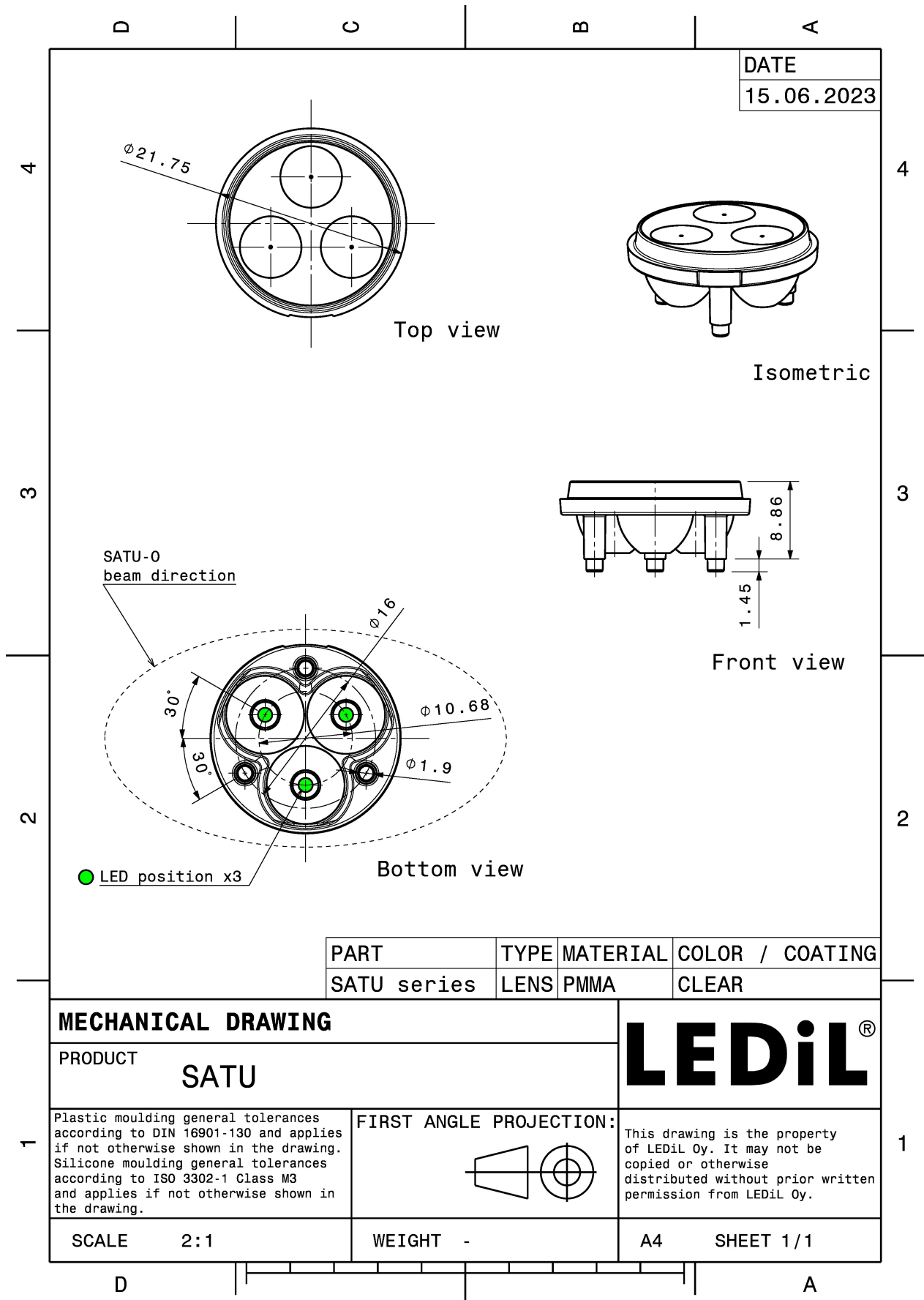
MATERIALS:

Component	Type	Material	Colour	Finish
SATU-M	Multi-lens	PMMA	clear	

ORDERING INFORMATION:

Component	Qty in box	MOQ	MPQ	Box weight (kg)
C11602_SATU-M » Box size: 480 x 280 x 300 mm	2880	120	120	8.0





See also our general installation guide: www.ledil.com/installation_guide

OPTICAL RESULTS (SIMULATED):



LED	XQ-E HI
FWHM / FWTM	30.0° / 42.0°
Efficiency	93 %
Peak intensity	3.7 cd/lm
LEDs/each optic	1
Light colour	White
Required components:	

