

ANNA-50-7-M

~20° medium beam with 7 optics

TECHNICAL SPECIFICATIONS:

Dimensions	Ø 50.0 mm
Height	10.7 mm
Fastening	glue, pin
ROHS compliant	yes ⓘ

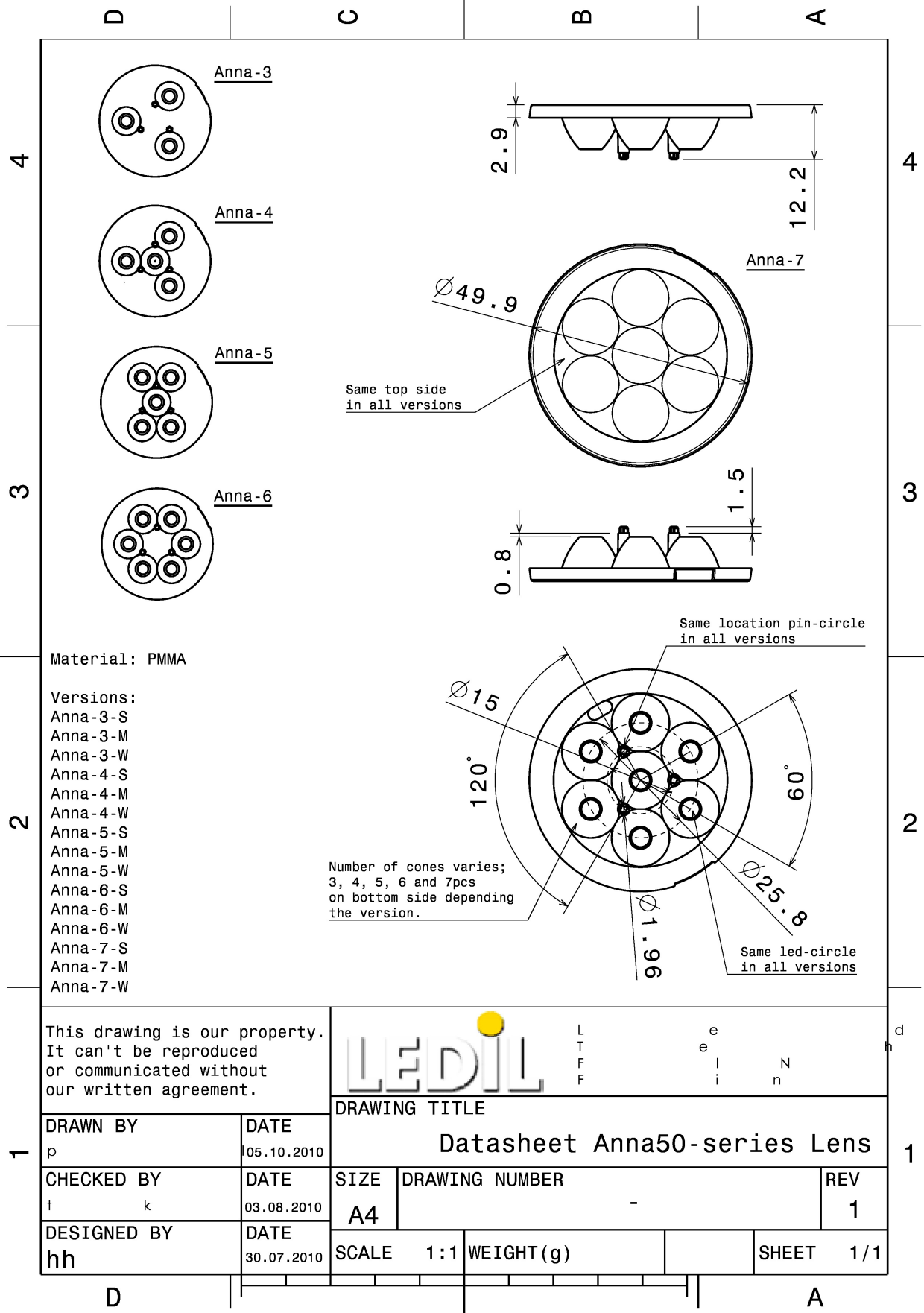
MATERIAL SPECIFICATIONS:

Component	Type	Material	Colour	Finish
ANNA-50-7-M	Multi-lens	PMMA	clear	

ORDERING INFORMATION:

Component	Qty in box	MOQ	MPQ	Box weight (kg)
C11679_ANNA-50-7-M » Box size: 480 x 280 x 300 mm	512	96	32	7.1





See also our general installation guide: www.ledil.com/installation_guide

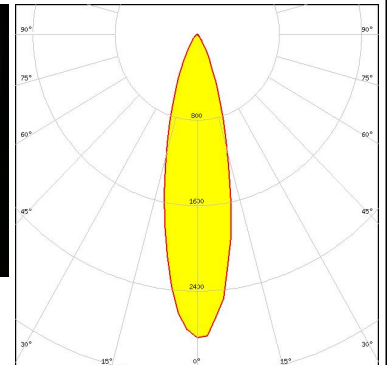
PHOTOMETRIC DATA (MEASURED):



LED XB-D
 FWHM / FWTM 22.0°
 Efficiency 87 %
 Peak intensity 3.5 cd/lm
 LEDs/each optic 1
 Light colour White
 Required components:



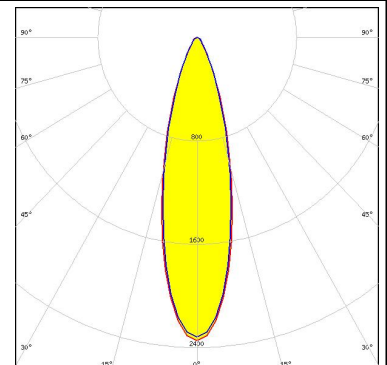
LED LUXEON A
 FWHM / FWTM 26.0° / 55.0°
 Efficiency 84 %
 Peak intensity 2.8 cd/lm
 LEDs/each optic 1
 Light colour White
 Required components:



LED LUXEON Rebel
 FWHM / FWTM 18.0° / 38.0°
 Efficiency 87 %
 Peak intensity 5 cd/lm
 LEDs/each optic 1
 Light colour White
 Required components:



LED LUXEON Rebel ES
 FWHM / FWTM 27.0° / 56.0°
 Efficiency 87 %
 Peak intensity 2.3 cd/lm
 LEDs/each optic 1
 Light colour White
 Required components:



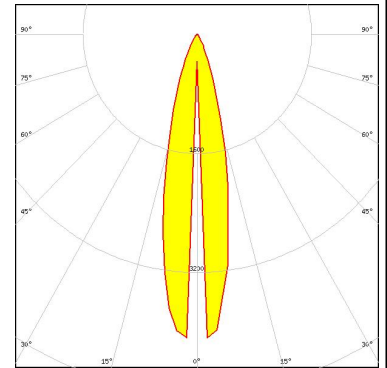
PHOTOMETRIC DATA (MEASURED):



LED NCSxx19A
 FWHM / FWTM 23.0° / 50.0°
 Efficiency 89 %
 Peak intensity 3.2 cd/lm
 LEDs/each optic 1
 Light colour White
 Required components:



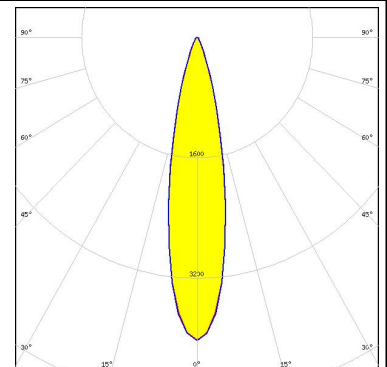
LED NF2x757A
 FWHM / FWTM 20.0° / 43.0°
 Efficiency 90 %
 Peak intensity 4.1 cd/lm
 LEDs/each optic 1
 Light colour White
 Required components:



LED NVSxx19A
 FWHM / FWTM 25.0° / 54.0°
 Efficiency 89 %
 Peak intensity 2.9 cd/lm
 LEDs/each optic 1
 Light colour White
 Required components:



OSRAM
 Opto Semiconductors
 LED OSOLON SSL 150
 FWHM / FWTM 22.0° / 42.0°
 Efficiency 89 %
 Peak intensity 4 cd/lm
 LEDs/each optic 1
 Light colour White
 Required components:

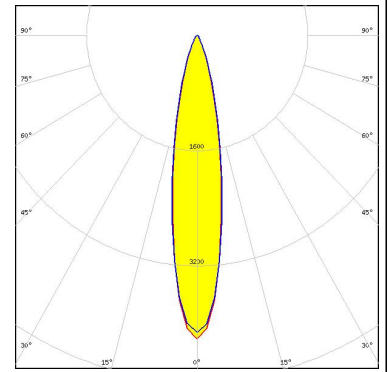


PHOTOMETRIC DATA (MEASURED):


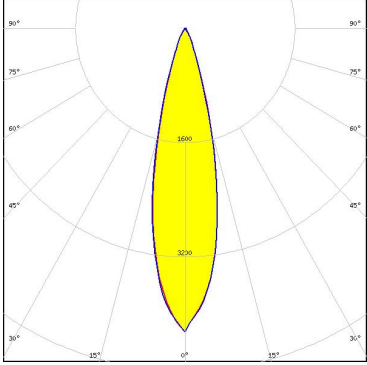


OSRAM

Opto Semiconductors

LED	OSLON SSL 80
FWHM / FWTM	20.0° / 44.0°
Efficiency	88 %
Peak intensity	4.2 cd/lm
LEDs/each optic	1
Light colour	White
Required components:	



PHOTOMETRIC DATA (SIMULATED):

		
LED	NVSxx19B/NVSxx19C	
FWHM / FWTM	25.0° / 44.0°	
Efficiency	95 %	
Peak intensity	4.3 cd/lm	
LEDs/each optic	1	
Light colour	White	
Required components:		
		
SEOLUX SEMICONDUCTOR		
LED	Z5	
FWHM / FWTM	23.0°	
Efficiency	%	
LEDs/each optic	1	
Light colour	White	
Required components:		
		
LED	Double Dome (GM2BB)	
FWHM / FWTM	24.0°	
Efficiency	%	
LEDs/each optic	1	
Light colour	White	
Required components:		