

ANNA-40-5-S

~15° spot beam with 5 optics

TECHNICAL SPECIFICATIONS:

Dimensions	Ø 40.0 mm
Height	10.7 mm
Fastening	glue, pin
ROHS compliant	yes ⓘ

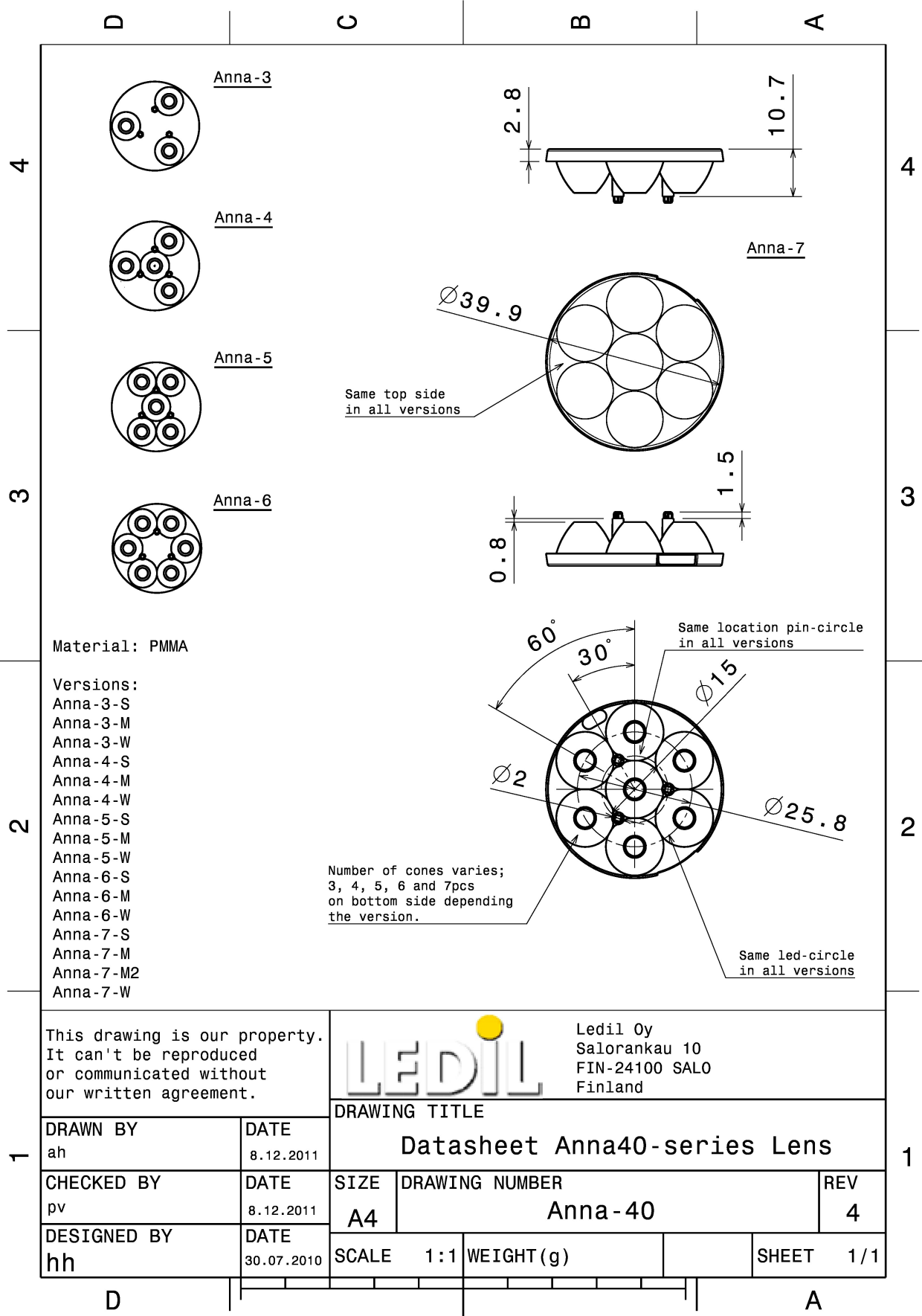


MATERIAL SPECIFICATIONS:

Component	Type	Material	Colour	Finish
ANNA-40-5-S	Multi-lens	PMMA	clear	

ORDERING INFORMATION:

Component	Qty in box	MOQ	MPQ	Box weight (kg)
C11713_ANNA-40-5-S » Box size: 480 x 280 x 300 mm	760	120	40	7.2



See also our general installation guide: www.ledil.com/installation_guide

PHOTOMETRIC DATA (MEASURED):

CREE LED

LED	XP-E
FWHM / FWTM	12.0° / 24.0°
Efficiency	93 %
Peak intensity	12.7 cd/lm
LEDs/each optic	1
Light colour	White
Required components:	

CREE LED

LED	XP-G
FWHM / FWTM	18.0° / 39.0°
Efficiency	93 %
Peak intensity	5.9 cd/lm
LEDs/each optic	1
Light colour	White
Required components:	

LUMILEDS

LED	LUXEON A
FWHM / FWTM	19.0° / 40.0°
Efficiency	87 %
Peak intensity	5.7 cd/lm
LEDs/each optic	1
Light colour	White
Required components:	

LUMILEDS

LED	LUXEON Rebel
FWHM / FWTM	13.0° / 28.0°
Efficiency	92 %
Peak intensity	9.3 cd/lm
LEDs/each optic	1
Light colour	White
Required components:	

PHOTOMETRIC DATA (MEASURED):

LUMILEDS

LED LUXEON Rebel ES
 FWHM / FWTM 18.0° / 36.0°
 Efficiency 93 %
 Peak intensity 6.1 cd/lm
 LEDs/each optic 1
 Light colour White
 Required components:

NICHIA

LED NCSxx19A
 FWHM / FWTM 16.0° / 35.0°
 Efficiency 91 %
 Peak intensity 6.7 cd/lm
 LEDs/each optic 1
 Light colour White
 Required components:

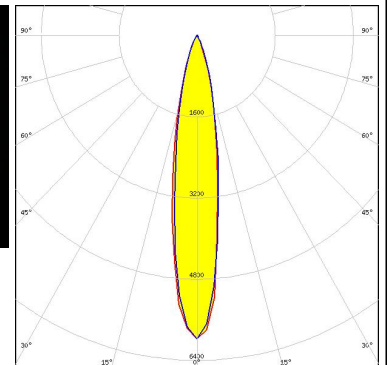
NICHIA

LED NVSxx19A
 FWHM / FWTM 19.0° / 42.0°
 Efficiency 91 %
 Peak intensity 4.9 cd/lm
 LEDs/each optic 1
 Light colour White
 Required components:

OSRAM

Opto Semiconductors

LED Duris S5 (2 chip)
 FWHM / FWTM 18.0° / 41.0°
 Efficiency 90 %
 Peak intensity 6 cd/lm
 LEDs/each optic 1
 Light colour White
 Required components:



PHOTOMETRIC DATA (MEASURED):

OSRAM

Opto Semiconductors

LED OSLOM SSL 150
FWHM / FWTM 12.0° / 22.0°
Efficiency 90 %
Peak intensity 13.7 cd/lm
LEDs/each optic 1
Light colour White
Required components:

OSRAM

Opto Semiconductors

LED OSLOM SSL 80
FWHM / FWTM 11.0° / 26.0°
Efficiency 93 %
Peak intensity 11.7 cd/lm
LEDs/each optic 1
Light colour White
Required components:

PHOTOMETRIC DATA (SIMULATED):

SHARP

LED	Double Dome (GM2BB)
FWHM / FWTM	12.0°
Efficiency	%
LEDs/each optic	1
Light colour	White
Required components:	