

SATU-S

~19° spot beam

SPECIFICATION:

Dimensions	Ø 21.8 mm
Height	8.9 mm
Fastening	glue, pin
ROHS compliant	yes ⓘ

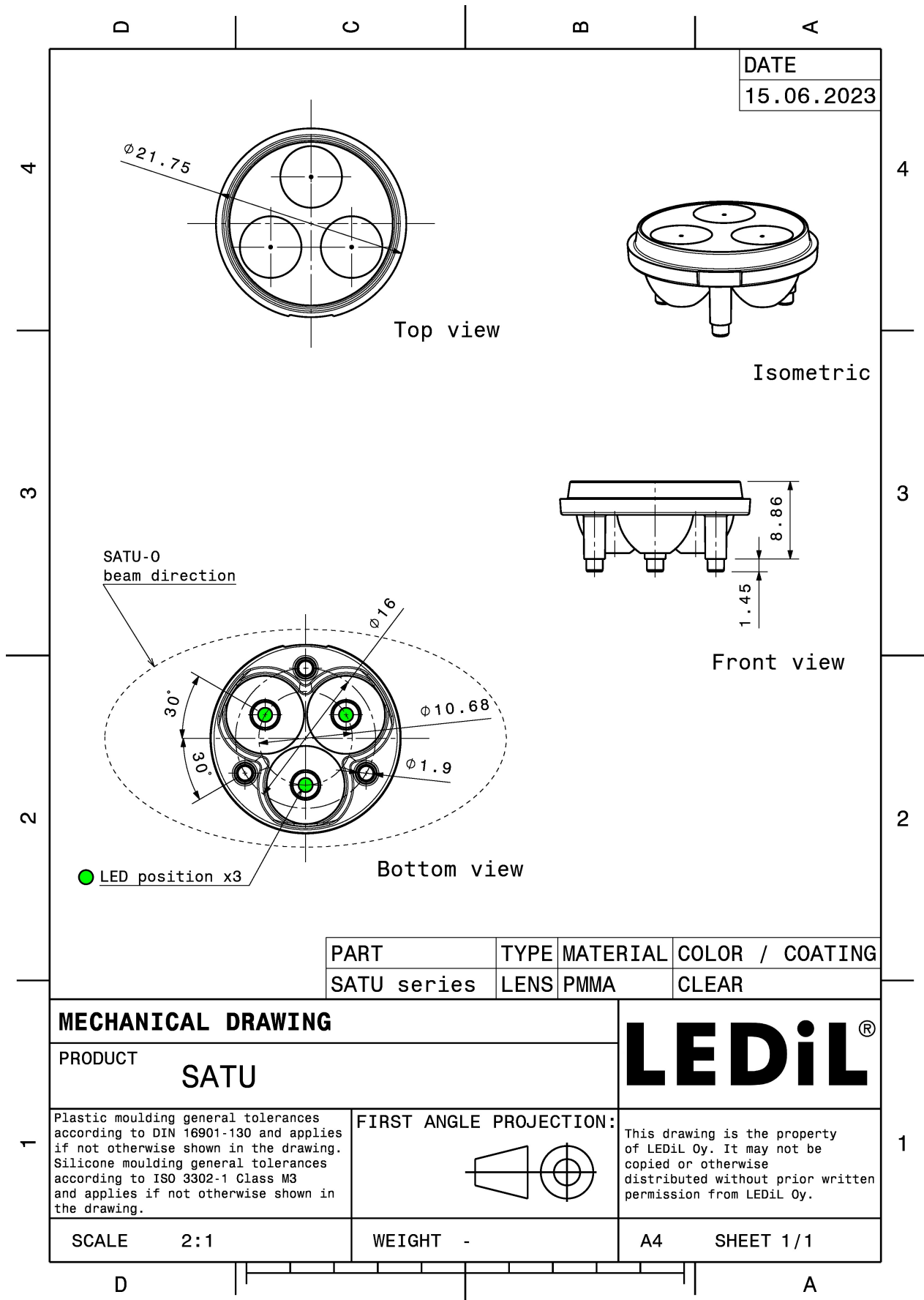
MATERIALS:

Component	Type	Material	Colour	Finish
SATU-S	Multi-lens	PMMA	clear	

ORDERING INFORMATION:

Component	Qty in box	MOQ	MPQ	Box weight (kg)
C11916_SATU-S » Box size: 480 x 280 x 300 mm	2880	120	120	7.6



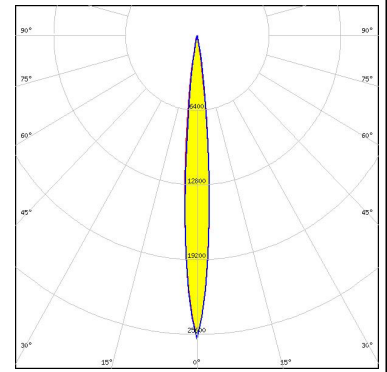


See also our general installation guide: www.ledil.com/installation_guide

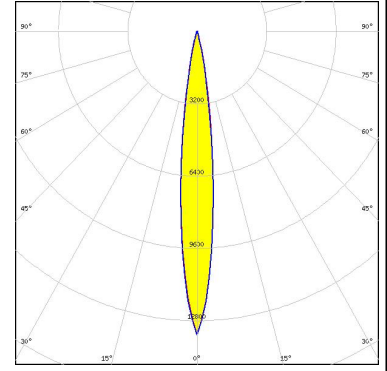
OPTICAL RESULTS (SIMULATED):



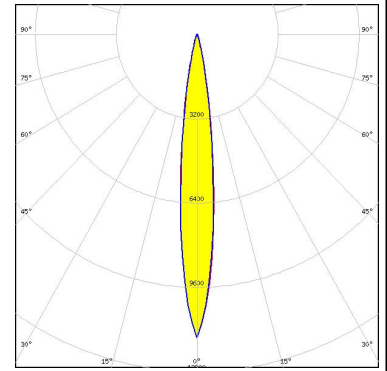
LED XQ-A
 FWHM / FWTM 10.0° / 18.0°
 Efficiency 96 %
 Peak intensity 26 cd/lm
 LEDs/each optic 1
 Light colour White
 Required components:



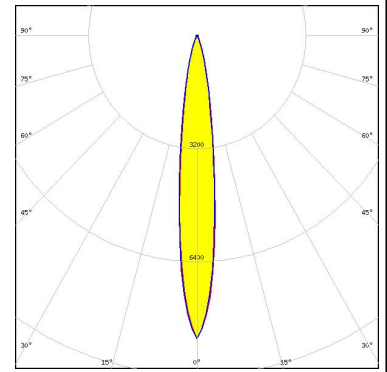
LED XQ-E HI
 FWHM / FWTM 12.0° / 26.0°
 Efficiency 97 %
 Peak intensity 13.4 cd/lm
 LEDs/each optic 1
 Light colour White
 Required components:



LED XQ-E HI
 FWHM / FWTM 13.0° / 26.0°
 Efficiency 95 %
 Peak intensity 11.5 cd/lm
 LEDs/each optic 1
 Light colour Royal Blue
 Required components:



LED NCSxE17A
 FWHM / FWTM 14.0° / 32.0°
 Efficiency 95 %
 Peak intensity 8.6 cd/lm
 LEDs/each optic 1
 Light colour White
 Required components:



OPTICAL RESULTS (SIMULATED):



LED	NFSWE11A
FWHM / FWTM	12.0° / 29.0°
Efficiency	95 %
Peak intensity	9.8 cd/lm
LEDs/each optic	1
Light colour	White
Required components:	

