

## SATU-O

~40° + 20° oval beam

### SPECIFICATION:

Dimensions	Ø 21.8 mm
Height	8.9 mm
Fastening	glue, pin
ROHS compliant	yes ⓘ

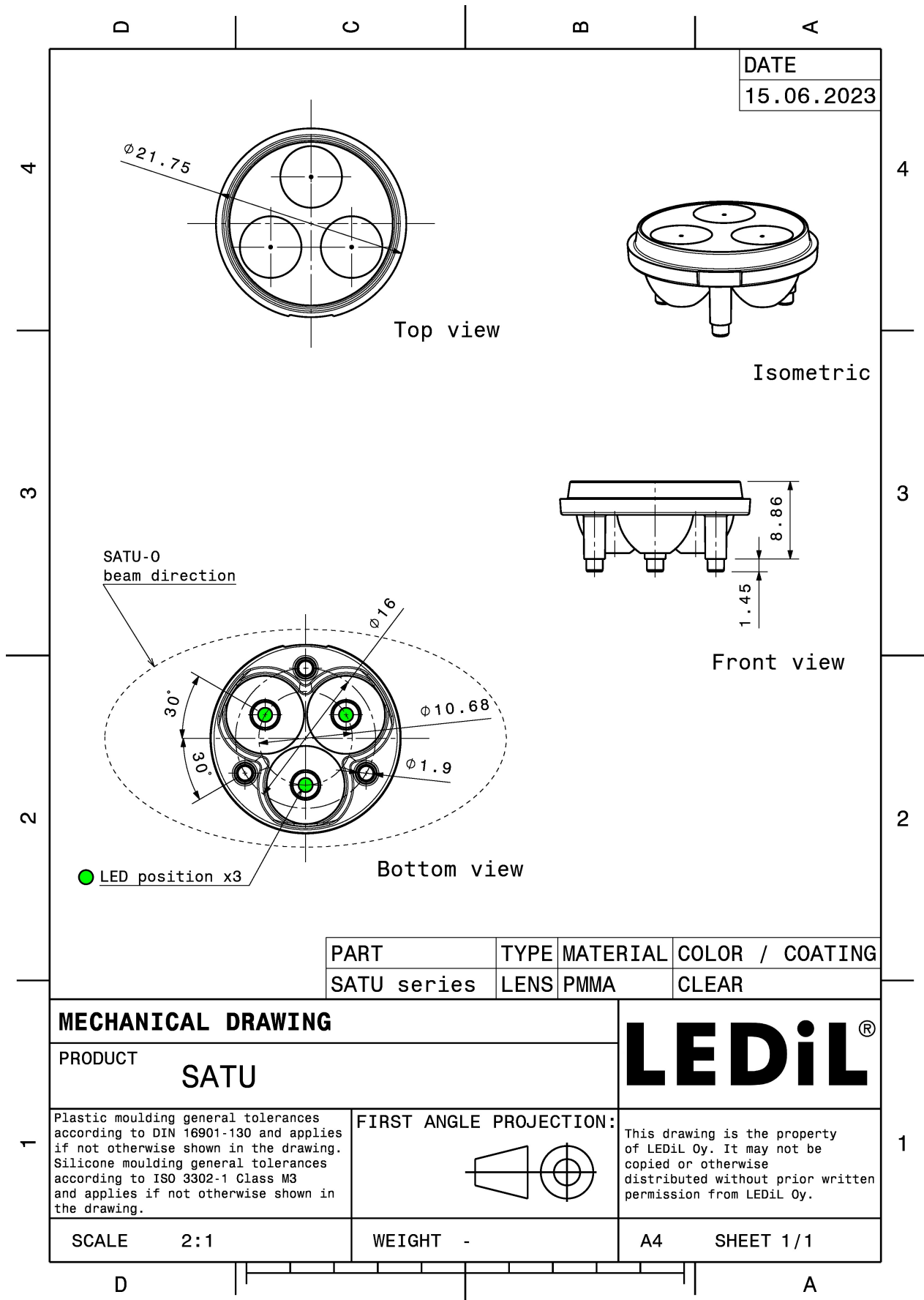
### MATERIALS:

Component	Type	Material	Colour	Finish
SATU-O	Multi-lens	PMMA	clear	



### ORDERING INFORMATION:

Component	Qty in box	MOQ	MPQ	Box weight (kg)
C11917_SATU-O » Box size: 480 x 280 x 300 mm	2880	120	120	7.6

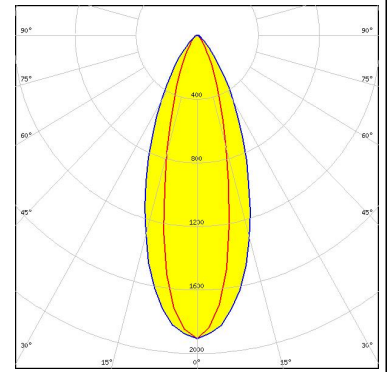


See also our general installation guide: [www.ledil.com/installation\\_guide](http://www.ledil.com/installation_guide)

### OPTICAL RESULTS (MEASURED):



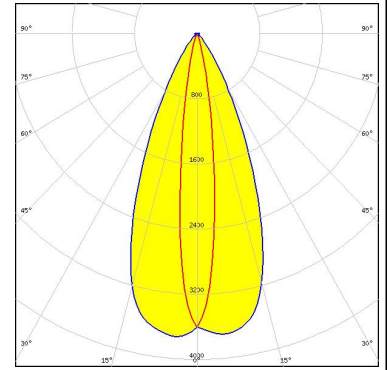
LED	LUXEON A
FWHM / FWTM	25.0 + 42.0° / 56.0 + 80.0°
Efficiency	82 %
Peak intensity	1.9 cd/lm
LEDs/each optic	1
Light colour	White
Required components:	



### OPTICAL RESULTS (SIMULATED):



LED XQ-E HI  
FWHM / FWTM 14.0 + 46.0° / 27.0 + 72.0°  
Efficiency 95 %  
Peak intensity 3.7 cd/lm  
LEDs/each optic 1  
Light colour White  
Required components:



LED NCSxx19A  
FWHM / FWTM 20.0 + 44.0°  
Efficiency %  
LEDs/each optic 1  
Light colour White  
Required components: