

STRADA-T-6X1-DNW

Soft wide beam with good illuminance uniformity

SPECIFICATION:

Dimensions	119.8 x 25.2 mm
Height	5.6 mm
Fastening	glue, pin, screw
ROHS compliant	yes ⓘ

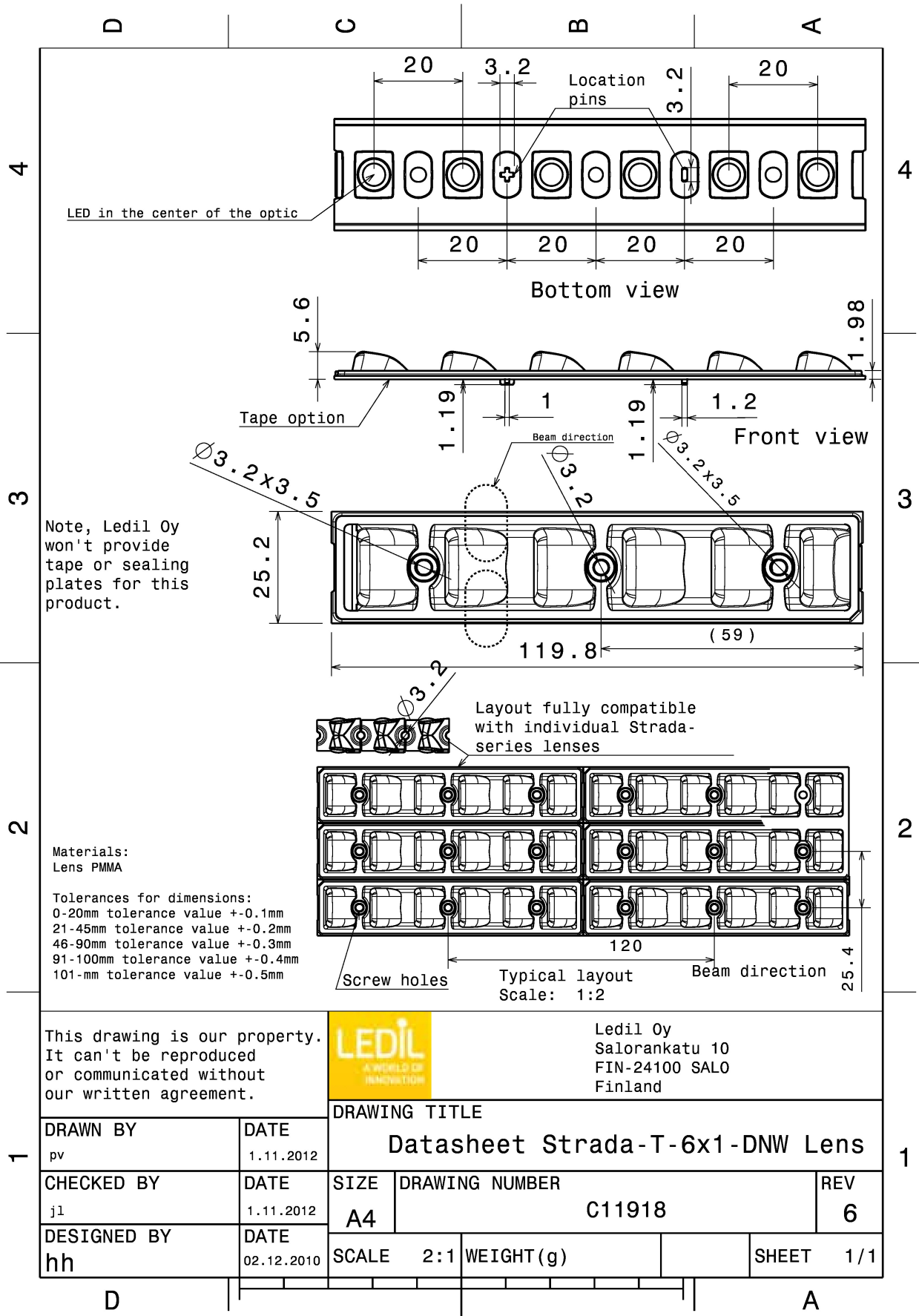


MATERIALS:

Component	Type	Material	Colour	Finish
STRADA-T-6X1-DNW	Multi-lens	PMMA	clear	

ORDERING INFORMATION:

Component	Qty in box	MOQ	MPQ	Box weight (kg)
C11918_STRADA-T-6X1-DNW » Box size: 480 x 280 x 300 mm	858	104	26	9.8



This drawing is our property. It can't be reproduced or communicated without our written agreement.



Ledil Oy
 Salorankatu 10
 FIN-24100 SALO
 Finland

DRAWING TITLE

Datasheet Strada-T-6x1-DNW Lens

DRAWN BY pv	DATE 1.11.2012
CHECKED BY jl	DATE 1.11.2012
DESIGNED BY hh	DATE 02.12.2010

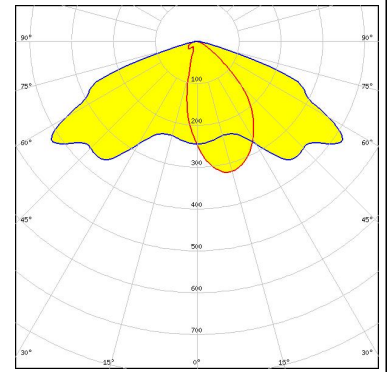
SIZE A4	DRAWING NUMBER C11918	REV 6
SCALE 2:1	WEIGHT (g)	SHEET 1/1

See also our general installation guide: www.ledil.com/installation_guide

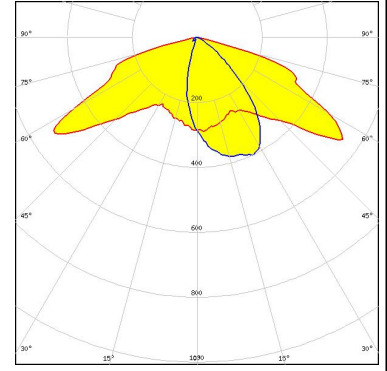
OPTICAL RESULTS (MEASURED):



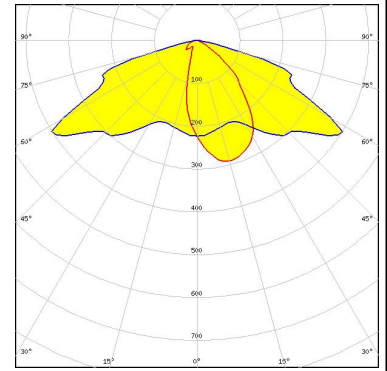
LED XB-D
 FWHM / FWTM Asymmetric
 Efficiency 93 %
 Peak intensity 0.4 cd/lm
 LEDs/each optic 1
 Light colour White
 Required components:



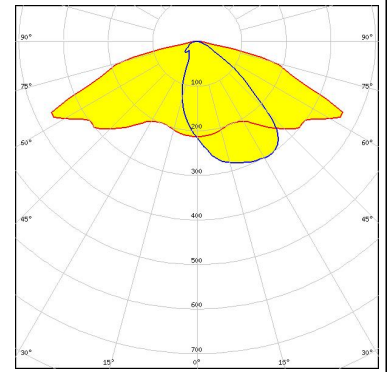
LED XP-E
 FWHM / FWTM Asymmetric
 Efficiency 93 %
 Peak intensity 0.4 cd/lm
 LEDs/each optic 1
 Light colour White
 Required components:



LED XP-E-HEW
 FWHM / FWTM Asymmetric
 Efficiency 93 %
 Peak intensity 0.4 cd/lm
 LEDs/each optic 1
 Light colour White
 Required components:



LED XP-G
 FWHM / FWTM Asymmetric
 Efficiency 93 %
 Peak intensity 0.4 cd/lm
 LEDs/each optic 1
 Light colour White
 Required components:



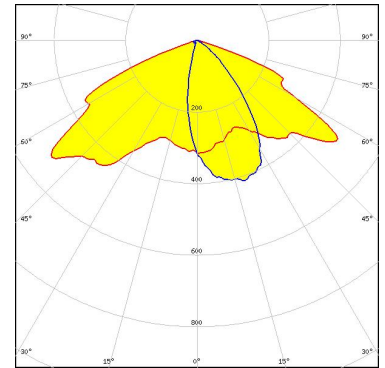
OPTICAL RESULTS (MEASURED):

LUMILEDS

LED LUXEON A
FWHM / FWTM Asymmetric
Efficiency %
LEDs/each optic 1
Light colour White
Required components:

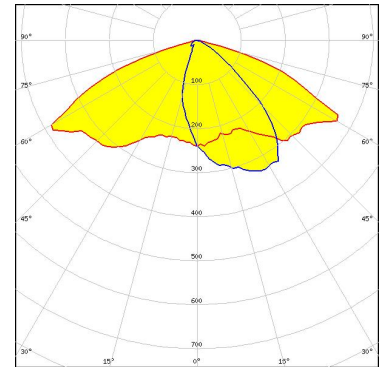
LUMILEDS

LED LUXEON Rebel
FWHM / FWTM Asymmetric
Efficiency 93 %
Peak intensity 0.5 cd/lm
LEDs/each optic 1
Light colour White
Required components:



LUMILEDS

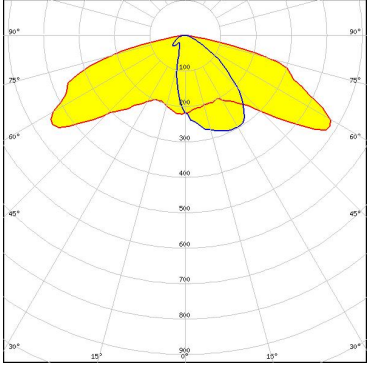
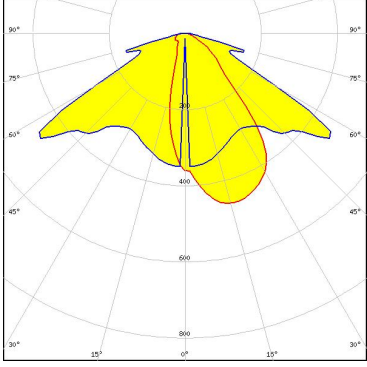
LED LUXEON Rebel ES
FWHM / FWTM Asymmetric
Efficiency 93 %
Peak intensity 0.4 cd/lm
LEDs/each optic 1
Light colour White
Required components:



NICHIA

LED NCSxx19A
FWHM / FWTM Asymmetric
Efficiency 93 %
Peak intensity 0.4 cd/lm
LEDs/each optic 1
Light colour White
Required components:

OPTICAL RESULTS (MEASURED):

<p>NICHIA</p> <p>LED: NVSxx19A FWHM / FWTM: Asymmetric Efficiency: 93 % Peak intensity: 0.4 cd/lm LEDs/each optic: 1 Light colour: White Required components:</p>	<p>OSRAM <small>Opto Semiconductors</small></p> <p>LED: OSLOM SSL 150 FWHM / FWTM: Asymmetric Efficiency: % Peak intensity: 0.4 cd/lm LEDs/each optic: 1 Light colour: White Required components:</p> 
<p>OSRAM <small>Opto Semiconductors</small></p> <p>LED: OSLOM SSL 80 FWHM / FWTM: Asymmetric Efficiency: 93 % Peak intensity: 0.5 cd/lm LEDs/each optic: 1 Light colour: White Required components:</p>	
<p>SEOUL SEMICONDUCTOR</p> <p>LED: Z5 FWHM / FWTM: Asymmetric Efficiency: % LEDs/each optic: 1 Light colour: White Required components:</p>	

OPTICAL RESULTS (MEASURED):

SHARP

LED Double Dome (GM2BB)
FWHM / FWTM Asymmetric
Efficiency %
LEDs/each optic 1
Light colour White
Required components:

