

STRADA-FT

Forward throw beam for area lighting optimized for XP-G and XP-E

SPECIFICATION:

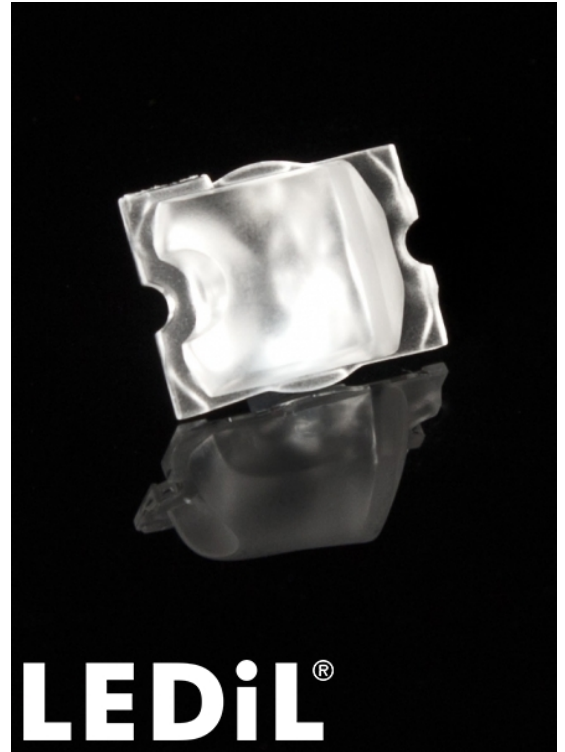
Dimensions	19.6 x 15.5 mm
Height	8.2 mm
Fastening	glue, pin, screw
ROHS compliant	yes ⓘ

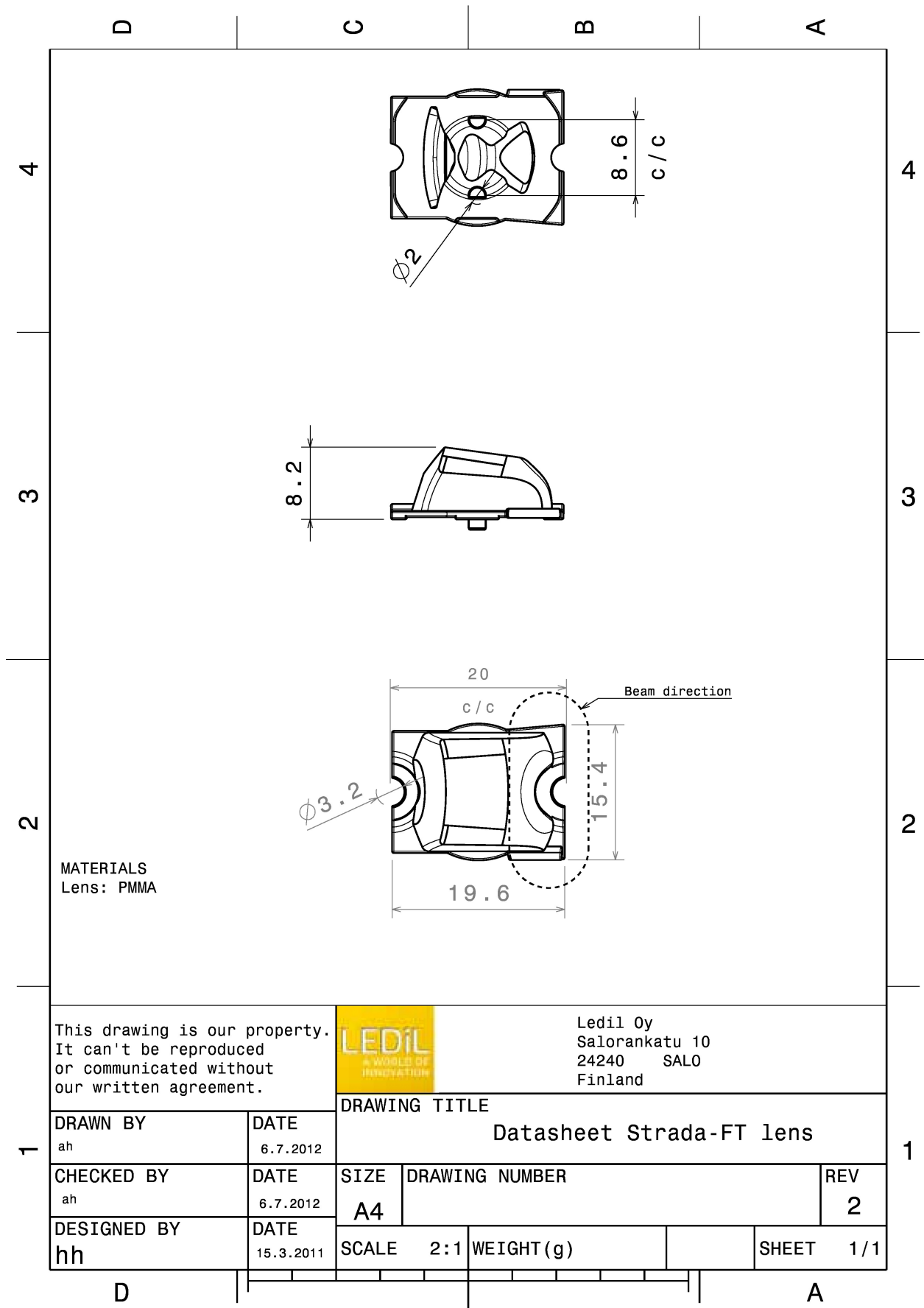
MATERIALS:

Component	Type	Material	Colour	Finish
STRADA-FT	Single lens	PMMA	clear	

ORDERING INFORMATION:

Component	Qty in box	MOQ	MPQ	Box weight (kg)
C12049_STRADA-FT » Box size: 480 x 280 x 300 mm	2880	288	144	5.6



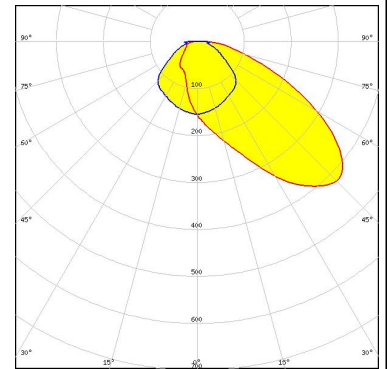


See also our general installation guide: www.ledil.com/installation_guide

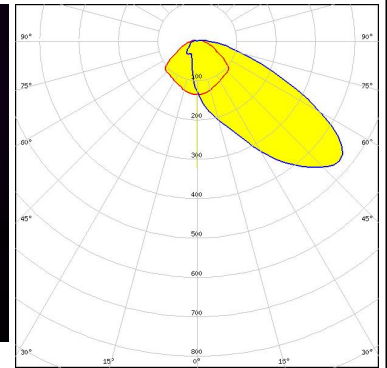
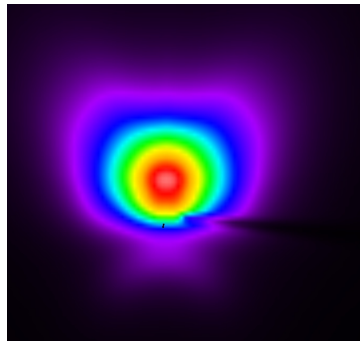
OPTICAL RESULTS (MEASURED):



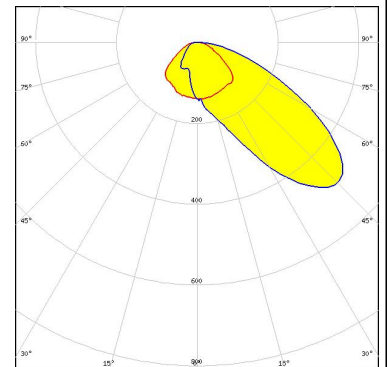
LED XB-D
 FWHM / FWTM Asymmetric
 Efficiency 87 %
 LEDs/each optic 1
 Light colour White
 Required components:



LED XP-E
 FWHM / FWTM Asymmetric
 Efficiency 92 %
 LEDs/each optic 1
 Light colour White
 Required components:

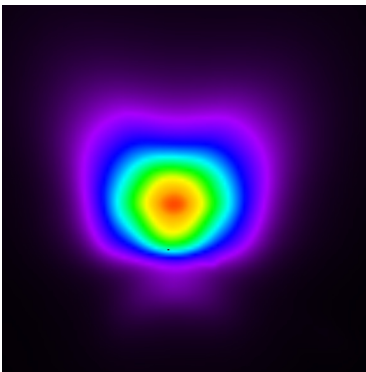
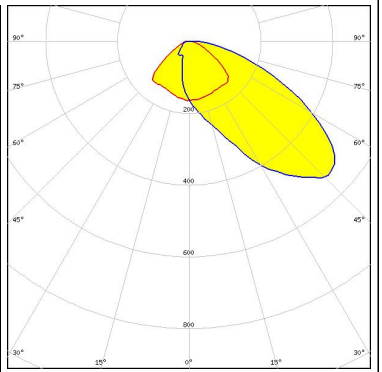
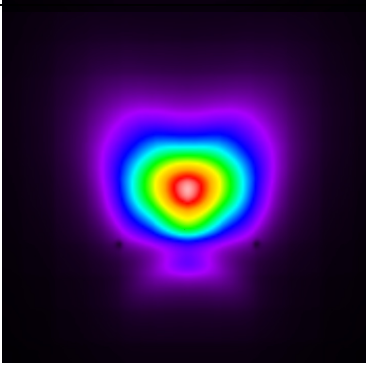
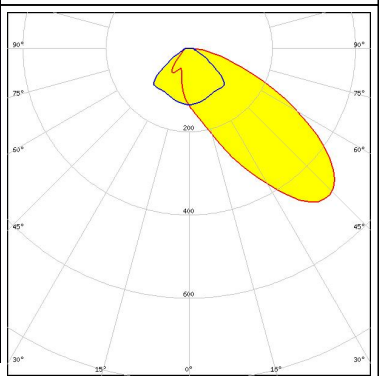


LED XP-G
 FWHM / FWTM Asymmetric
 Efficiency 88 %
 LEDs/each optic 1
 Light colour White
 Required components:

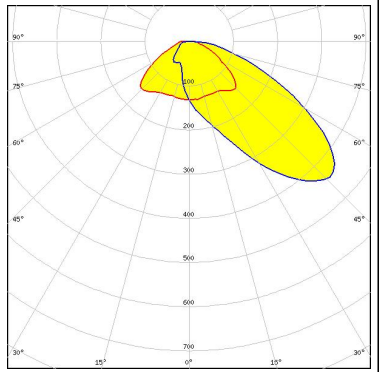
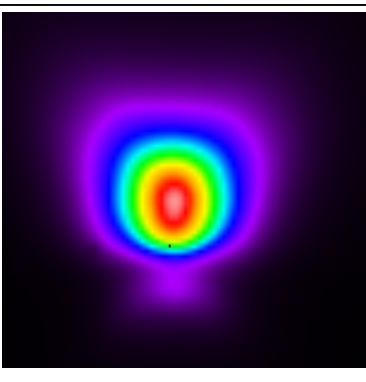
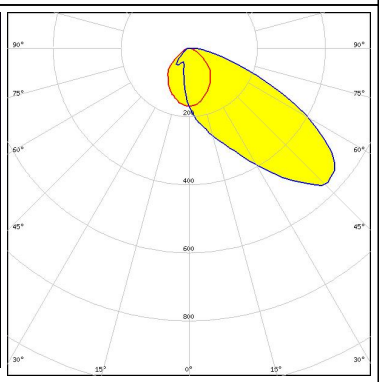
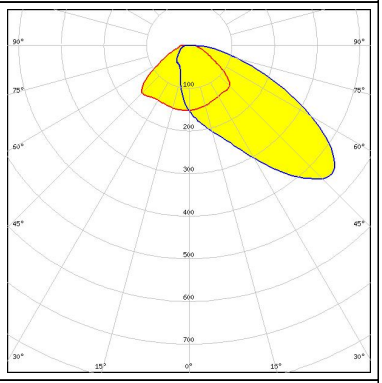


LED LUXEON A
 FWHM / FWTM Asymmetric
 Efficiency 87 %
 LEDs/each optic 1
 Light colour White
 Required components:

OPTICAL RESULTS (MEASURED):

<p>LUMILEDS</p> <p>LED: LUXEON Rebel FWHM / FWTM: Asymmetric Efficiency: 92 % LEDs/each optic: 1 Light colour: White Required components:</p>		
<p>LUMILEDS</p> <p>LED: LUXEON Rebel ES FWHM / FWTM: Asymmetric Efficiency: 92 % LEDs/each optic: 1 Light colour: White Required components:</p>		
<p>NICHIA</p> <p>LED: NCSxx19A FWHM / FWTM: Asymmetric Efficiency: 92 % LEDs/each optic: 1 Light colour: White Required components:</p>		
<p>NICHIA</p> <p>LED: NVSxx19A FWHM / FWTM: Asymmetric Efficiency: 92 % LEDs/each optic: 1 Light colour: White Required components:</p>		

OPTICAL RESULTS (MEASURED):

<p>OSRAM Opto Semiconductors</p> <p>LED OSLON SSL 150 FWHM / FWTM Asymmetric Efficiency 92 % LEDs/each optic 1 Light colour White Required components:</p>		
<p>OSRAM Opto Semiconductors</p> <p>LED OSLON SSL 80 FWHM / FWTM Asymmetric Efficiency 92 % LEDs/each optic 1 Light colour White Required components:</p>		
<p>SEOL SEOUL SEMICONDUCTOR</p> <p>LED Z5 FWHM / FWTM Asymmetric Efficiency 92 % LEDs/each optic 1 Light colour White Required components:</p>		
<p>SHARP</p> <p>LED Double Dome (GM2BB) FWHM / FWTM Asymmetric Efficiency 92 % LEDs/each optic 1 Light colour White Required components:</p>		

OPTICAL RESULTS (SIMULATED):



LED	LUXEON 3030 2D (Square LES)
FWHM / FWTM	Asymmetric
Efficiency	95 %
Peak intensity	0.8 cd/lm
LEDs/each optic	1
Light colour	White
Required components:	

