

STRADA-T-6X1-DWC

Universal road lighting (IESNA Type II medium) beam with excellent mixed illuminance and luminance uniformity. Optimized for Osram Oslon Square.

SPECIFICATION:

Dimensions	119.8 x 25.2 mm
Height	5.6 mm
Fastening	glue, pin, screw
ROHS compliant	yes ⓘ

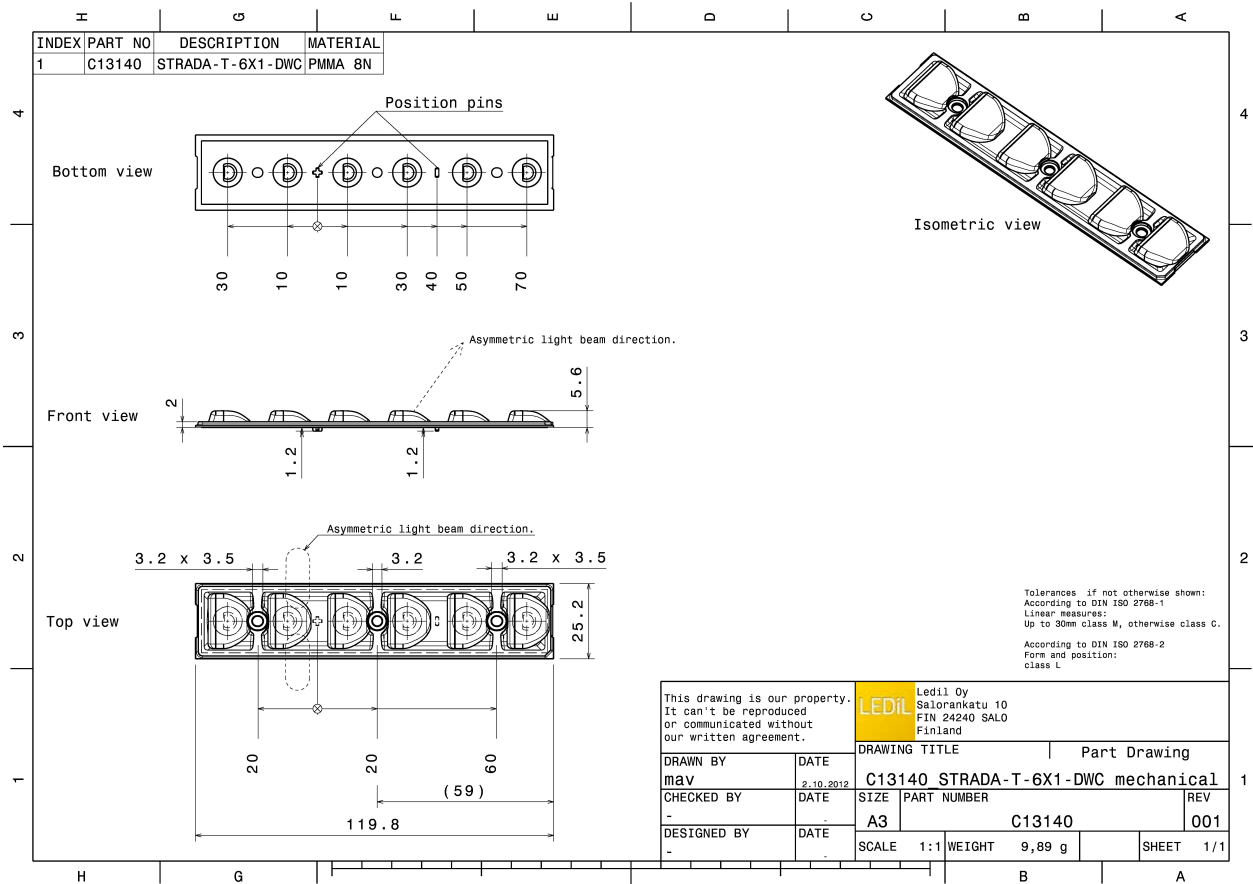


MATERIALS:

Component	Type	Material	Colour	Finish
STRADA-T-6X1-DWC	Multi-lens	PMMA	clear	

ORDERING INFORMATION:

Component	Qty in box	MOQ	MPQ	Box weight (kg)
C13140_STRADA-T-6X1-DWC » Box size: 480 x 280 x 300 mm	858	104	26	9.7



See also our general installation guide: www.ledil.com/installation_guide

OPTICAL RESULTS (MEASURED):

OSRAM
Opto Semiconductors

LED	OSLON Square PC
FWHM / FWTM	Asymmetric
Efficiency	94 %
Peak intensity	0.6 cd/lm
LEDs/each optic	1
Light colour	White
Required components:	

