

## HELENA-B

~25° medium beam

### SPECIFICATION:

Dimensions	Ø 72.8 mm
Height	11.1 mm
ROHS compliant	yes ⓘ

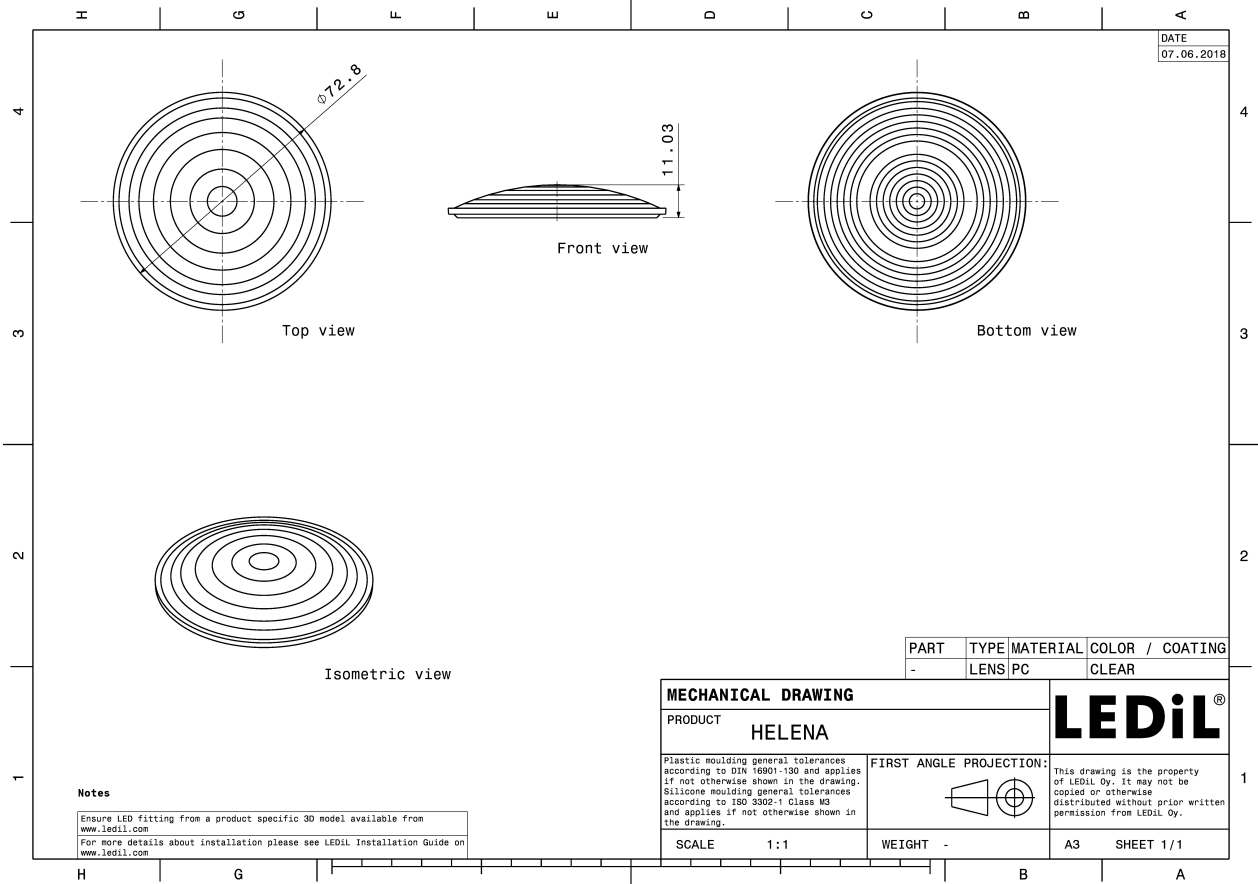
### MATERIALS:

Component	Type	Material	Colour	Finish
HELENA-B	Single lens	PC	clear	



### ORDERING INFORMATION:

Component	Qty in box	MOQ	MPQ	Box weight (kg)
C13254_HELENA-B » Box size: 476 x 273 x 292 mm	420	90	15	9.1

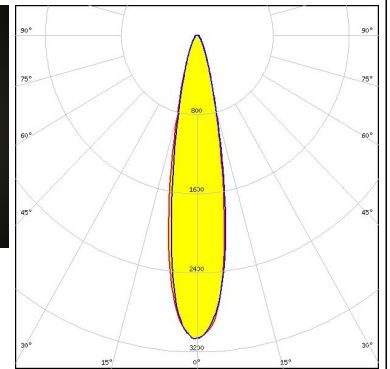
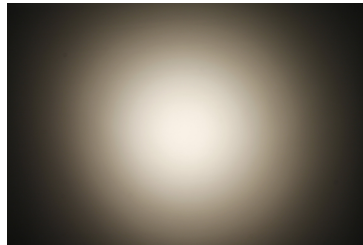


See also our general installation guide: [www.ledil.com/installation\\_guide](http://www.ledil.com/installation_guide)

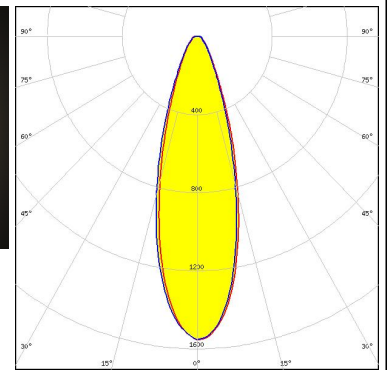
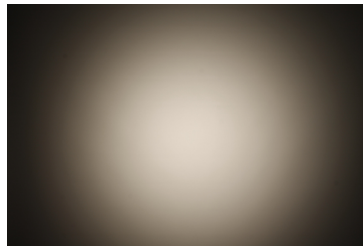
### OPTICAL RESULTS (MEASURED):



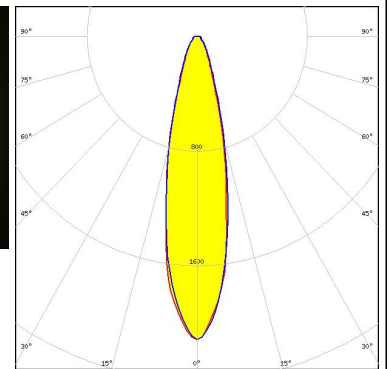
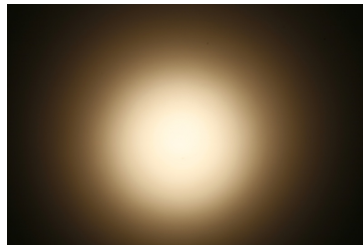
LED CXA/B 15xx  
 FWHM / FWTM 21.0° / 43.0°  
 Efficiency 74 %  
 Peak intensity 3.1 cd/lm  
 LEDs/each optic 1  
 Light colour White  
 Required components:



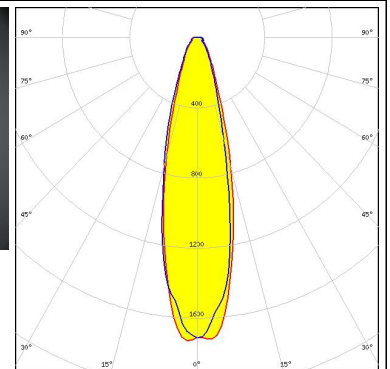
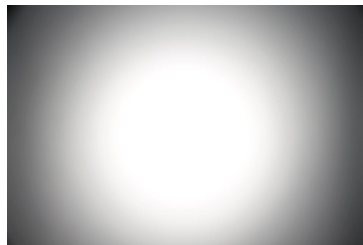
LED CXA/B 25xx  
 FWHM / FWTM 31.0° / 64.0°  
 Efficiency 75 %  
 Peak intensity 1.6 cd/lm  
 LEDs/each optic 1  
 Light colour White  
 Required components:



LED LUXEON K12  
 FWHM / FWTM 24.0° / 53.0°  
 Efficiency 74 %  
 Peak intensity 2.1 cd/lm  
 LEDs/each optic 1  
 Light colour White  
 Required components:



LED LUXEON K16  
 FWHM / FWTM 27.0°  
 Efficiency 74 %  
 Peak intensity 1.7 cd/lm  
 LEDs/each optic 1  
 Light colour White  
 Required components:



### OPTICAL RESULTS (MEASURED):



LED	LUXEON K8
FWHM / FWTM	23.0° / 49.0°
Efficiency	75 %
Peak intensity	2.6 cd/lm
LEDs/each optic	1
Light colour	White
Required components:	

