

SANDRA-12-M

~30° medium beam

TECHNICAL SPECIFICATIONS:

| | |
|----------------|-----------|
| Dimensions | Ø 67.0 mm |
| Height | 11.1 mm |
| Fastening | pin |
| ROHS compliant | yes ⓘ |

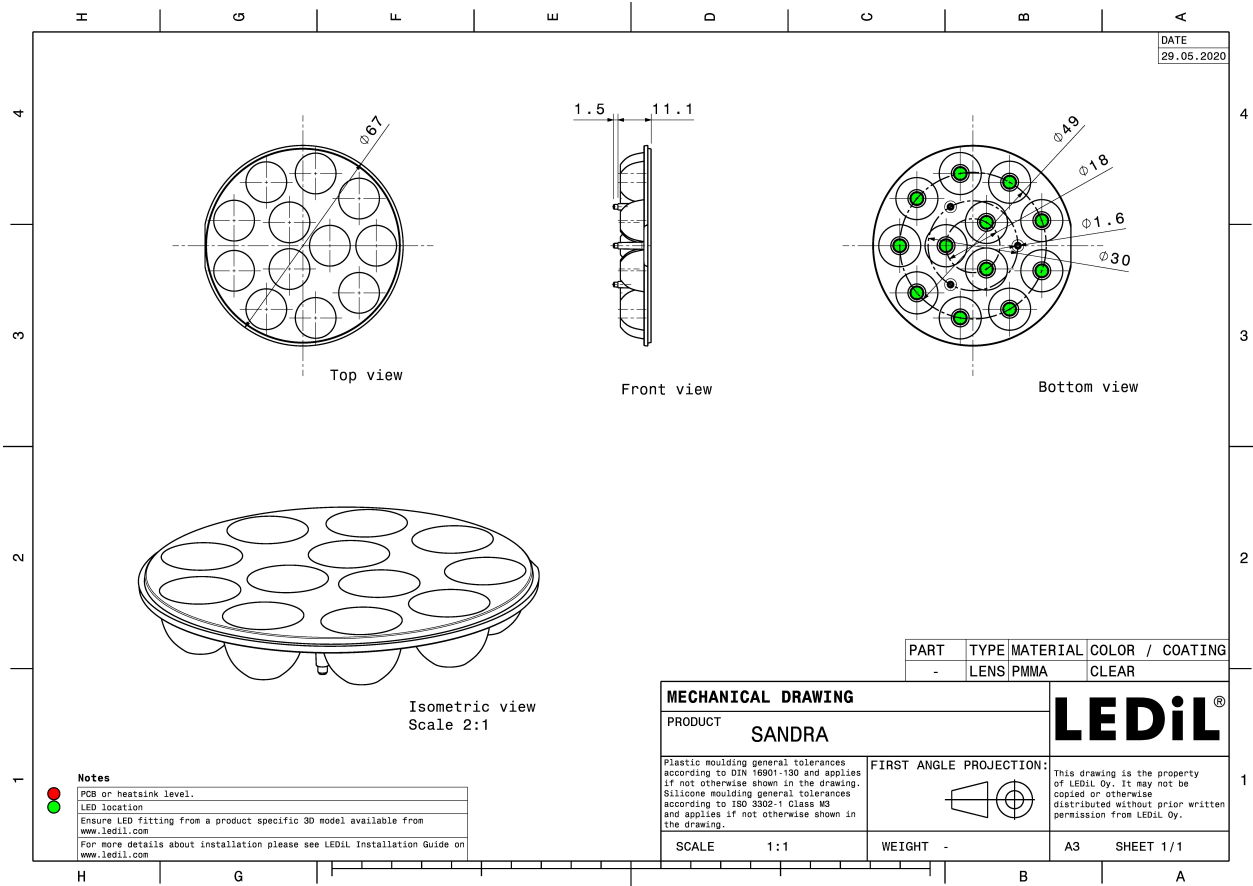


MATERIAL SPECIFICATIONS:

| Component | Type | Material | Colour | Finish |
|-------------|------------|----------|--------|--------|
| SANDRA-12-M | Multi-lens | PMMA | clear | |

ORDERING INFORMATION:

| Component | Qty in box | MOQ | MPQ | Box weight (kg) |
|--|------------|-----|-----|-----------------|
| C13405_SANDRA-12-M » Box size: 480 x 280 x 300 mm | 306 | | 18 | 7.8 |

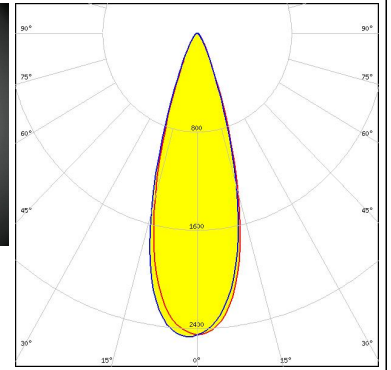
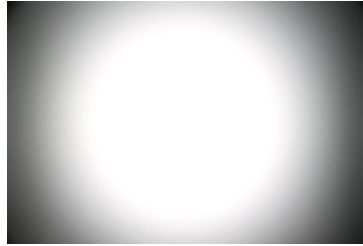


See also our general installation guide: www.ledil.com/installation_guide

PHOTOMETRIC DATA (MEASURED):



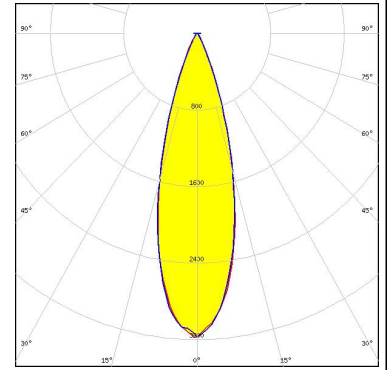
LED XP-G2
FWHM / FWTM 32.0° / 54.0°
Efficiency 91 %
Peak intensity 2.5 cd/lm
LEDs/each optic 1
Light colour White
Required components:



PHOTOMETRIC DATA (SIMULATED):



LED XD16
FWHM / FWTM 29.0° / 50.0°
Efficiency 94 %
Peak intensity 3.2 cd/lm
LEDs/each optic 1
Light colour White
Required components:



LED OSLON Square CSSRM2/CSSRM3
FWHM / FWTM 35.0° / 54.0°
Efficiency 96 %
Peak intensity 2.6 cd/lm
LEDs/each optic 1
Light colour White
Required components:

