

VANESSA-S

~17° spot beam

SPECIFICATION:

Dimensions	295.0 x 16.0 mm
Height	8 mm
Fastening	pin
ROHS compliant	yes ⓘ

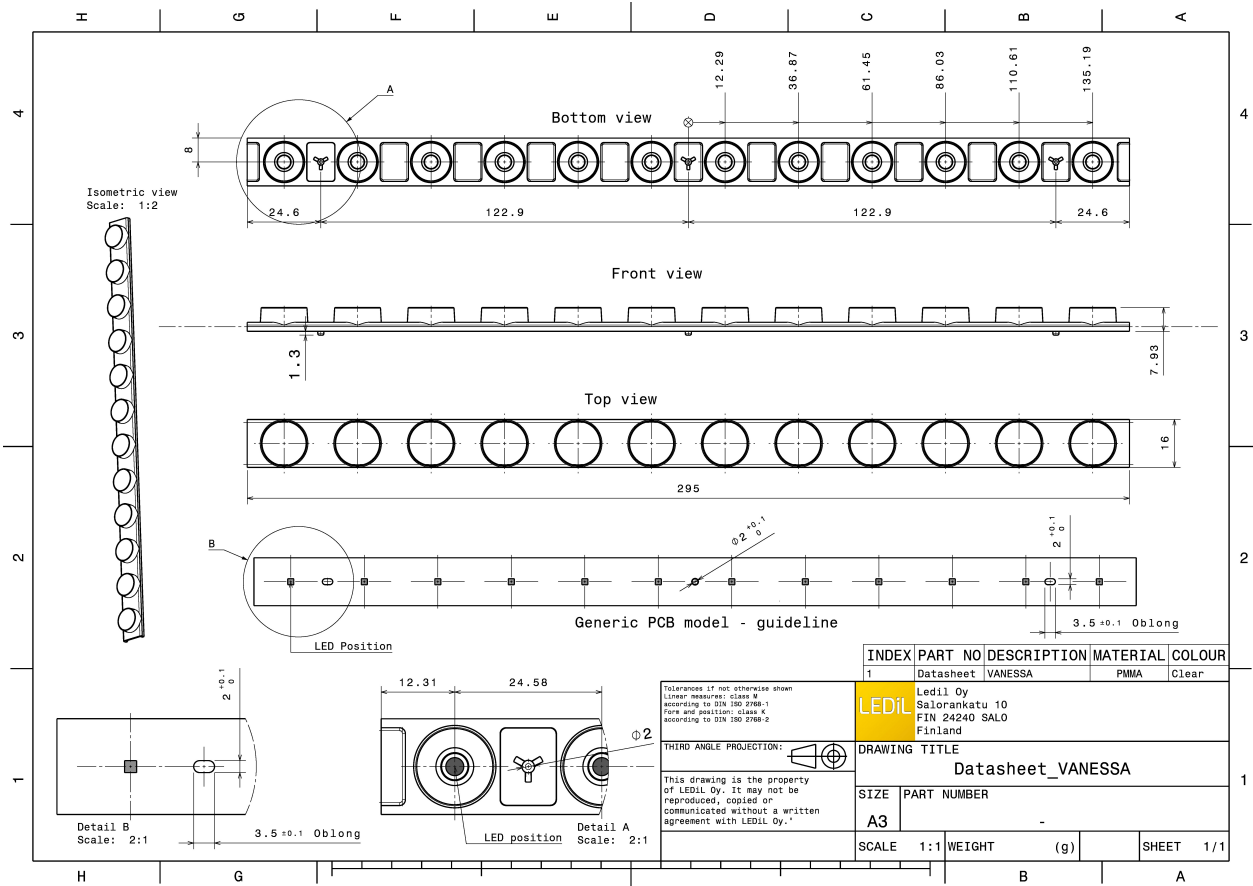
MATERIALS:

Component	Type	Material	Colour	Finish
VANESSA-S	Linear lens	PMMA	clear	

ORDERING INFORMATION:

Component	Qty in box	MOQ	MPQ	Box weight (kg)
C13454_VANESSA-S » Box size: 350 x 350 x 380 mm	448	84	14	11.7



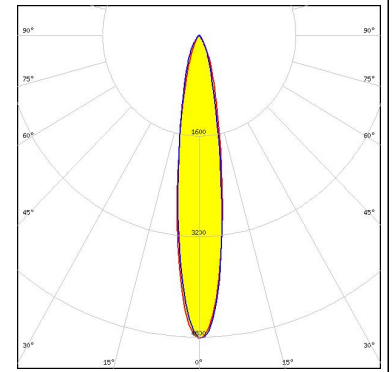


See also our general installation guide: www.ledil.com/installation_guide

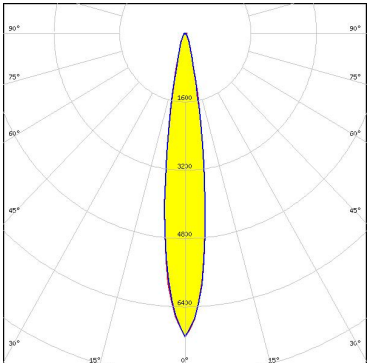
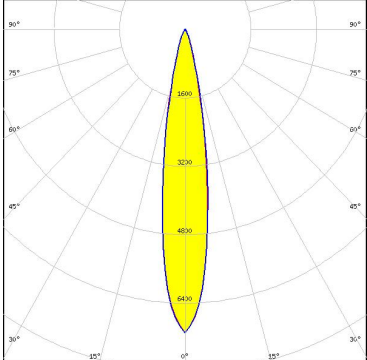
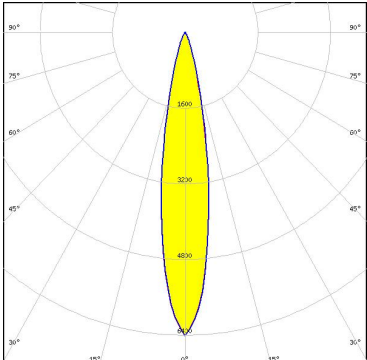
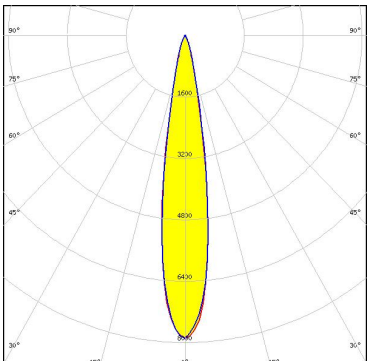
OPTICAL RESULTS (MEASURED):



LED NF2x757A
FWHM / FWTM 17.0° / 43.0°
Efficiency 90 %
LEDs/each optic 1
Light colour White
Required components:



OPTICAL RESULTS (SIMULATED):

<p>NICHIA</p> <p>LED: NVSxE21A FWHM / FWTM: 16.0° / 31.0° Efficiency: 94 % Peak intensity: 7.1 cd/lm LEDs/each optic: 1 Light colour: White Required components:</p>	
<p>OSRAM Opto Semiconductors</p> <p>LED: Duris S5 (2 chip) FWHM / FWTM: 18.0° / 35.0° Efficiency: 96 % Peak intensity: 7.1 cd/lm LEDs/each optic: 1 Light colour: White Required components:</p>	
<p>SAMSUNG</p> <p>LED: LH181A FWHM / FWTM: 18.0° / 36.0° Efficiency: 95 % Peak intensity: 6.4 cd/lm LEDs/each optic: 1 Light colour: White Required components:</p>	
<p>SAMSUNG</p> <p>LED: LH181B FWHM / FWTM: 18.0° / 32.0° Efficiency: 96 % Peak intensity: 7.9 cd/lm LEDs/each optic: 1 Light colour: White Required components:</p>	

OPTICAL RESULTS (SIMULATED):

