

## VANESSA-M

~25° medium beam

### SPECIFICATION:

Dimensions	295.0 x 16.0 mm
Height	8 mm
Fastening	pin
ROHS compliant	yes ⓘ

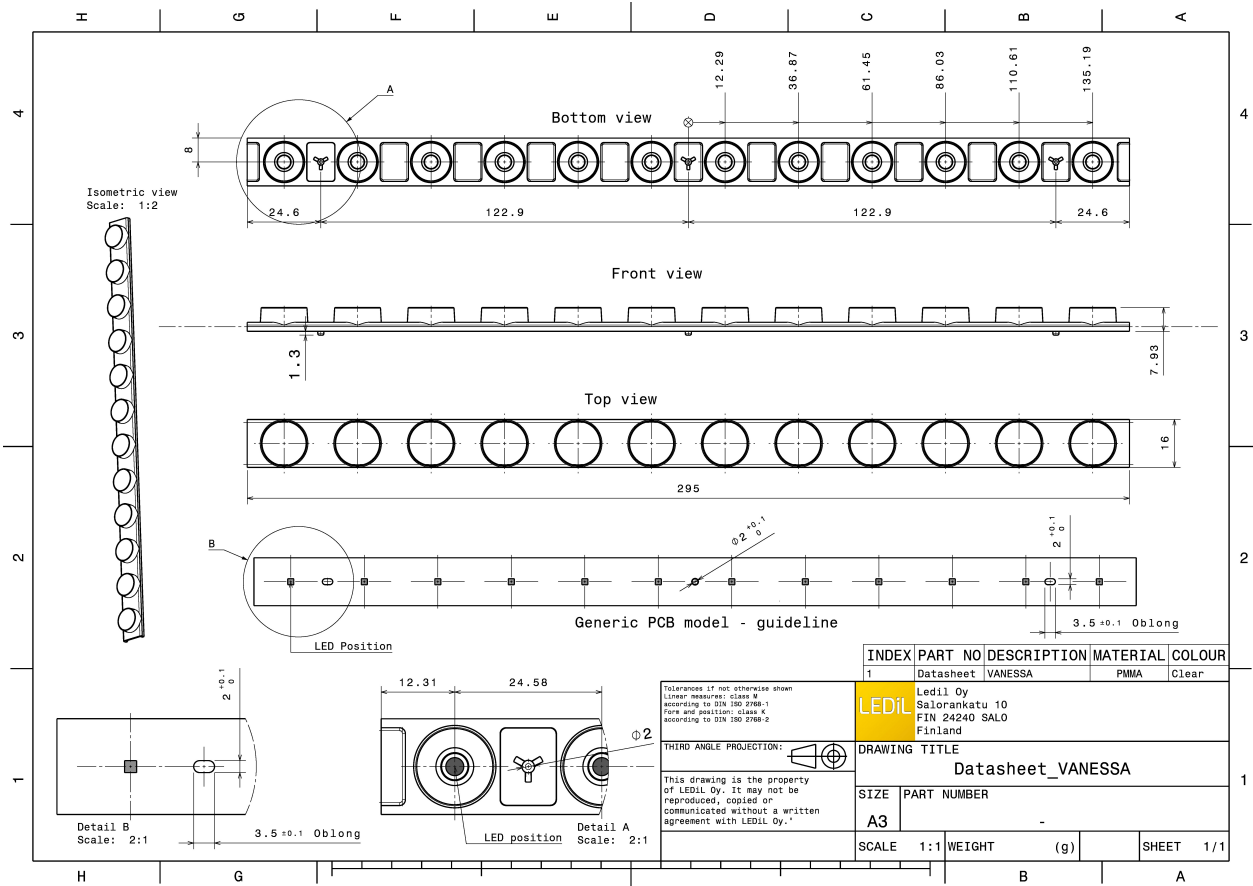
### MATERIALS:

Component	Type	Material	Colour	Finish
VANESSA-M	Linear lens	PMMA	clear	

### ORDERING INFORMATION:

Component	Qty in box	MOQ	MPQ	Box weight (kg)
C13459_VANESSA-M » Box size: 480 x 280 x 300 mm	448	84	14	11.8



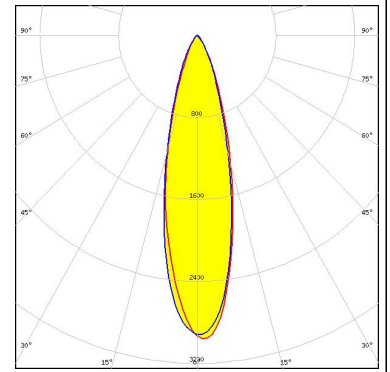


See also our general installation guide: [www.ledil.com/installation\\_guide](http://www.ledil.com/installation_guide)

### OPTICAL RESULTS (MEASURED):



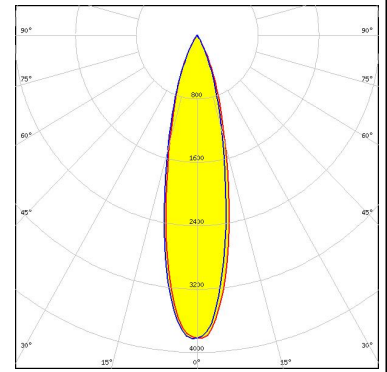
LED NF2x757A  
FWHM / FWTM 26.0° / 53.0°  
Efficiency 89 %  
LEDs/each optic 1  
Light colour White  
Required components:



### OPTICAL RESULTS (SIMULATED):

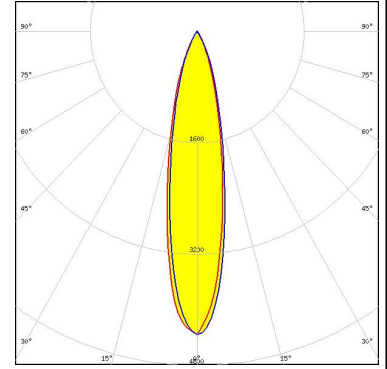
#### LUMILEDS

LED LUXEON 2835 Line  
FWHM / FWTM 24.0° / 52.0°  
Efficiency 96 %  
Peak intensity 3.8 cd/lm  
LEDs/each optic 1  
Light colour White  
Required components:



#### NICHIA

LED NFSx757G  
FWHM / FWTM 22.0° / 48.0°  
Efficiency 96 %  
Peak intensity 4.4 cd/lm  
LEDs/each optic 1  
Light colour White  
Required components:



#### SEMI

LED Z8Y22  
FWHM / FWTM 29.0° / 54.0°  
Efficiency 96 %  
Peak intensity 3.1 cd/lm  
LEDs/each optic 1  
Light colour White  
Required components:

