

## HB-5X1-FLAT-W

~55° wide beam with flat bottom structure allowing more freedom in PCB design

### SPECIFICATION:

Dimensions	123.0 x 25.0 mm
Height	8.5 mm
Fastening	glue, pin, screw
ROHS compliant	yes ⓘ

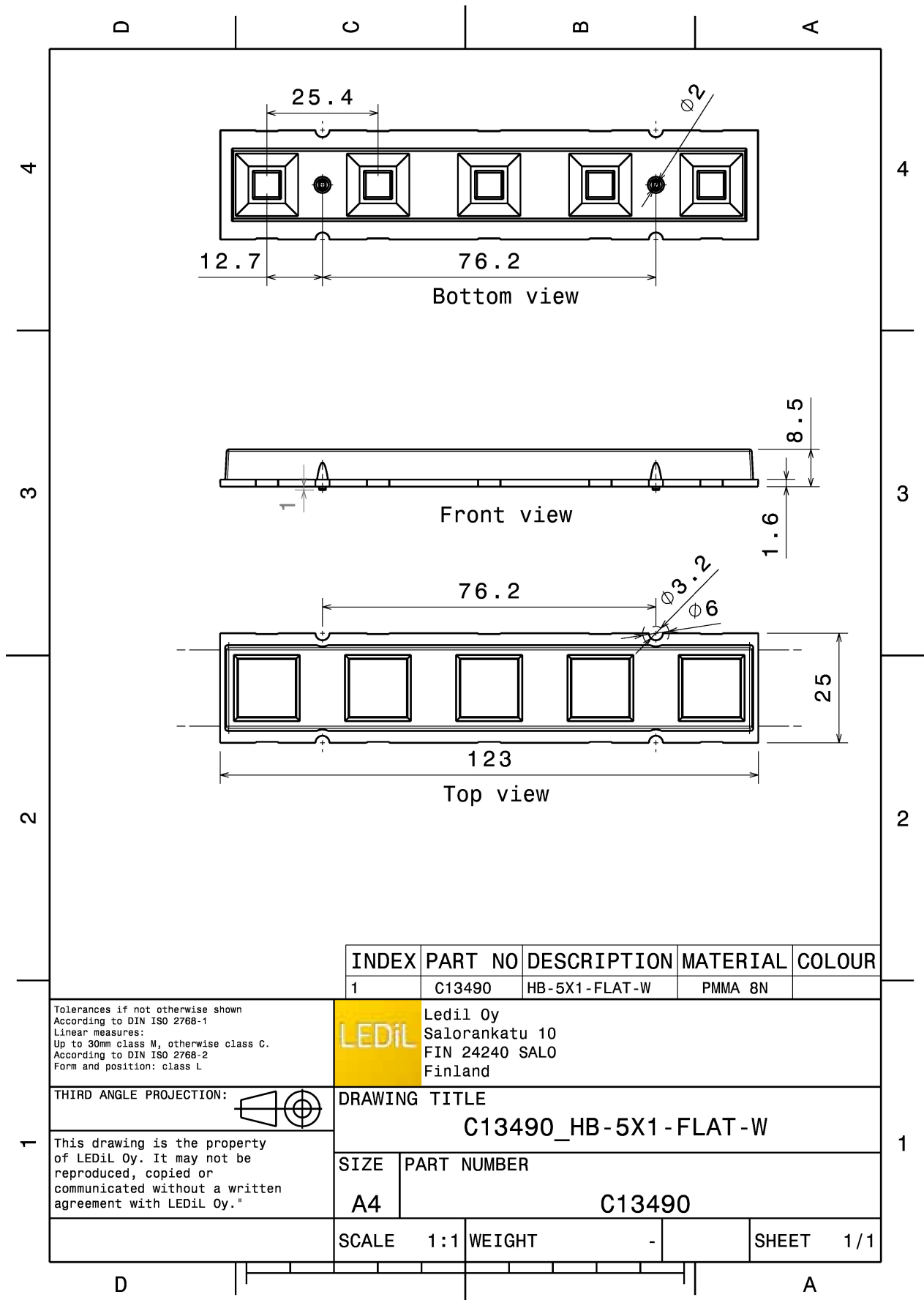
### MATERIALS:

Component	Type	Material	Colour	Finish
HB-5X1-FLAT-W	Multi-lens	PMMA	clear	

### ORDERING INFORMATION:

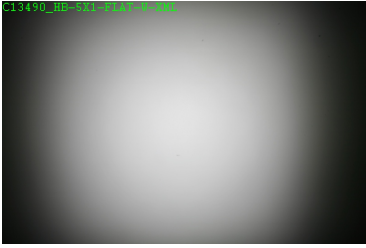

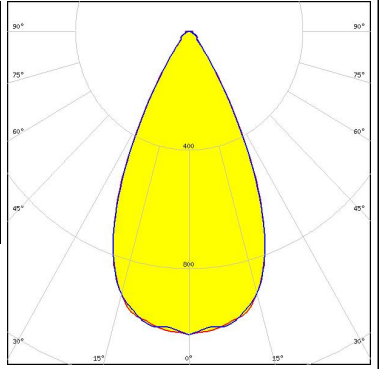
Component	Qty in box	MOQ	MPQ	Box weight (kg)
C13490_HB-5X1-FLAT-W » Box size: 480 x 280 x 300 mm	504	105	21	8.4





See also our general installation guide: [www.ledil.com/installation\\_guide](http://www.ledil.com/installation_guide)

#### OPTICAL RESULTS (MEASURED):

<p><b>CREE</b> LEDs</p> <p>LED XM-L FWHM / FWTM 54.0° / 82.0° Efficiency 91 % LEDs/each optic 1 Light colour White Required components:</p>	
<p><b>CREE</b> LEDs</p> <p>LED XP-G FWHM / FWTM 51.0° / 78.0° Efficiency 90 % LEDs/each optic 1 Light colour White Required components:</p>	 

#### OPTICAL RESULTS (SIMULATED):



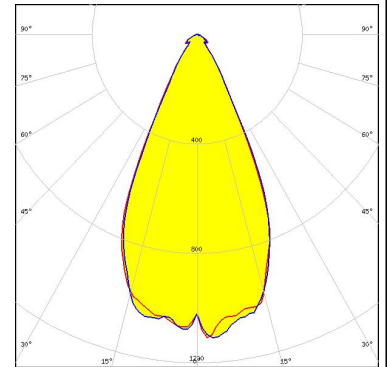
LED XM-L2  
FWHM / FWTM 56.0°  
Efficiency %  
LEDs/each optic 1  
Light colour White  
Required components:



LED XP-E  
FWHM / FWTM 47.0° / 78.0°  
Efficiency %  
LEDs/each optic 1  
Light colour White  
Required components:



LED XT-E  
FWHM / FWTM 50.0°  
Efficiency %  
LEDs/each optic 1  
Light colour White  
Required components:



LED LUXEON A  
FWHM / FWTM 45.0°  
Efficiency %  
LEDs/each optic 1  
Light colour White  
Required components:

#### OPTICAL RESULTS (SIMULATED):

##### LUMILEDS

LED	LUXEON R
FWHM / FWTM	45.0°
Efficiency	%
LEDs/each optic	1
Light colour	White

Required components:

##### LUMILEDS

LED	LUXEON Rebel
FWHM / FWTM	43.0° / 75.0°
Efficiency	%
LEDs/each optic	1
Light colour	White

Required components:

##### LUMILEDS

LED	LUXEON Rebel ES
FWHM / FWTM	45.0°
Efficiency	%
LEDs/each optic	1
Light colour	White

Required components:

##### NICHIA

LED	NCSxx19A
FWHM / FWTM	50.0°
Efficiency	%
LEDs/each optic	1
Light colour	White

Required components:

## OPTICAL RESULTS (SIMULATED):



LED	NVSxx19A
FWHM / FWTM	50.0° / 78.0°
Efficiency	%
LEDs/each optic	1
Light colour	White
Required components:	