

KIKI-A

~165° wide beam

SPECIFICATION:

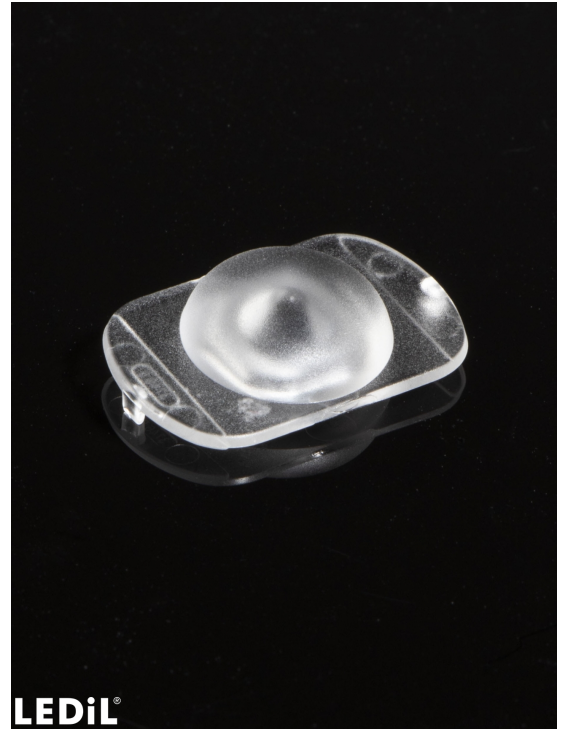
Dimensions	21.6 x 14.0 mm
Height	5.9 mm
Fastening	glue, pin
ROHS compliant	yes ⓘ

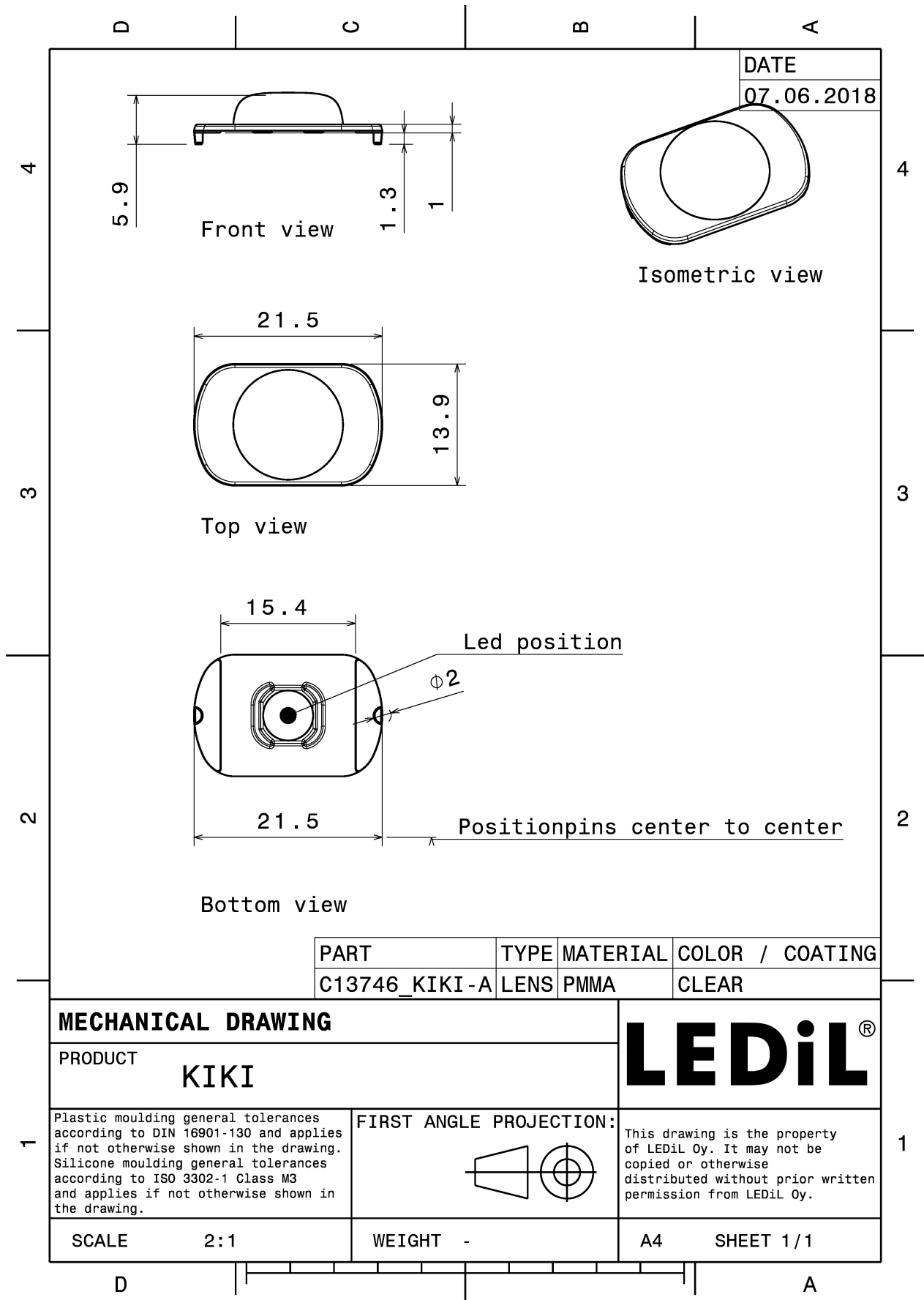
MATERIALS:

Component	Type	Material	Colour	Finish
KIKI-A	Single lens	PMMA	clear	

ORDERING INFORMATION:

Component	Qty in box	MOQ	MPQ	Box weight (kg)
C13746_KIKI-A » Box size: 300 x 250 x 250 mm	3960	360	120	3.7



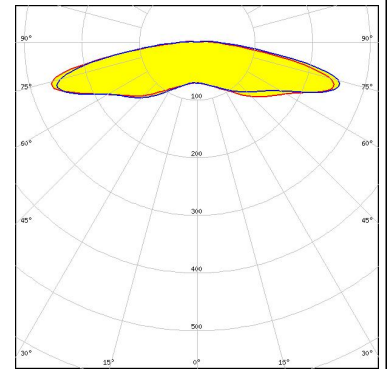


See also our general installation guide: www.ledil.com/installation_guide

OPTICAL RESULTS (MEASURED):

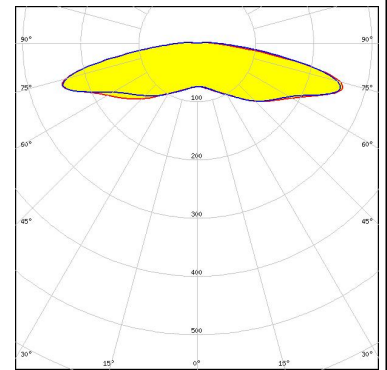
LUMILEDS

LED LUXEON T
FWHM / FWTM 165.0° / 185.0°
Efficiency 94 %
Peak intensity 0.3 cd/lm
LEDs/each optic 1
Light colour White
Required components:



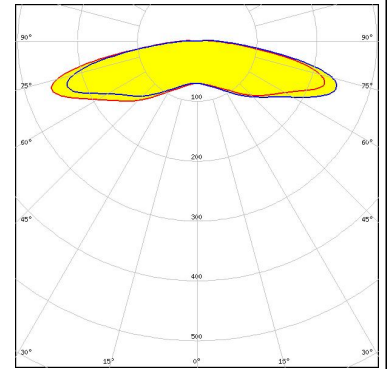
LUMILEDS

LED LUXEON TX
FWHM / FWTM 166.0° / 187.0°
Efficiency 94 %
Peak intensity 0.3 cd/lm
LEDs/each optic 1
Light colour White
Required components:

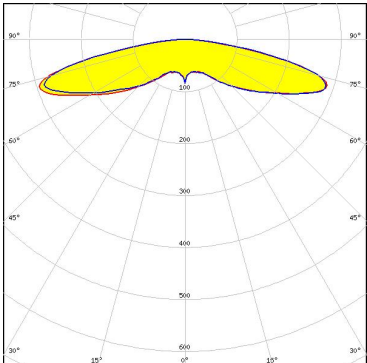
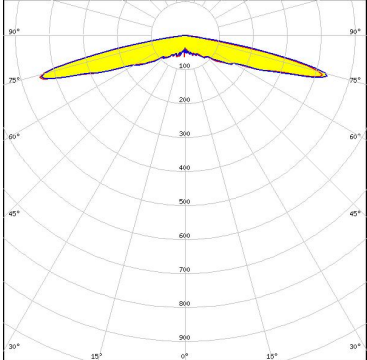
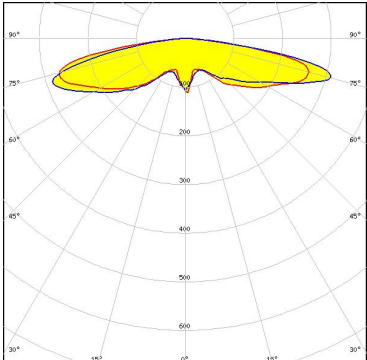
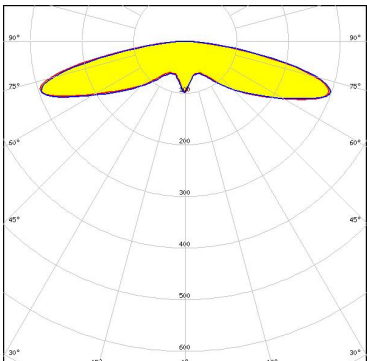


NICHIA

LED NVSxx19B/NVSxx19C
FWHM / FWTM 165.0 + 166.0° / 185.0°
Efficiency 93 %
Peak intensity 0.3 cd/lm
LEDs/each optic 1
Light colour White
Required components:



OPTICAL RESULTS (SIMULATED):

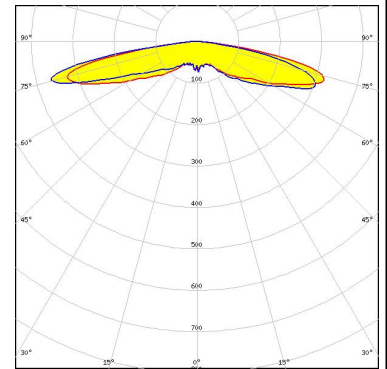
<p>LUMILEDS</p> <p>LED LUXEON 2835 Line FWHM / FWTM 160.0° / 172.0° Efficiency 94 % Peak intensity 0.3 cd/lm LEDs/each optic 1 Light colour White Required components:</p>	
<p>LUMILEDS</p> <p>LED LUXEON CZ FWHM / FWTM 157.0° / 164.0° Efficiency 93 % Peak intensity 0.4 cd/lm LEDs/each optic 1 Light colour White Required components:</p>	
<p>NICHIA</p> <p>LED NF2W757G-MT (Tunable White) FWHM / FWTM 162.0 + 164.0° / 171.0 + 172.0° Efficiency 96 % Peak intensity 0.3 cd/lm LEDs/each optic 1 Light colour Tunable White Required components:</p>	
<p>OSRAM Opto Semiconductors</p> <p>LED Duris E 2835 FWHM / FWTM 160.0° / 173.0° Efficiency 95 % Peak intensity 0.3 cd/lm LEDs/each optic 1 Light colour White Required components:</p>	

OPTICAL RESULTS (SIMULATED):

OSRAM

Opto Semiconductors

LED Duris S5 (2 chip)
FWHM / FWTM 161.0° / 170.0°
Efficiency 95 %
Peak intensity 0.4 cd/lm
LEDs/each optic 1
Light colour Deep Blue
Required components:



SAMSUNG

LED LM28xB Series
FWHM / FWTM 160.0° / 176.0°
Efficiency 96 %
Peak intensity 0.3 cd/lm
LEDs/each optic 1
Light colour White
Required components:

