

LENA-STD-BASE-VERO29

Basepart for LENA and LENINA reflectors.
Compatible with Bridgelux VERO29.

SPECIFICATION:

Dimensions	Ø 80.0 mm
Height	11.6 mm
Fastening	screw
ROHS compliant	yes ⓘ

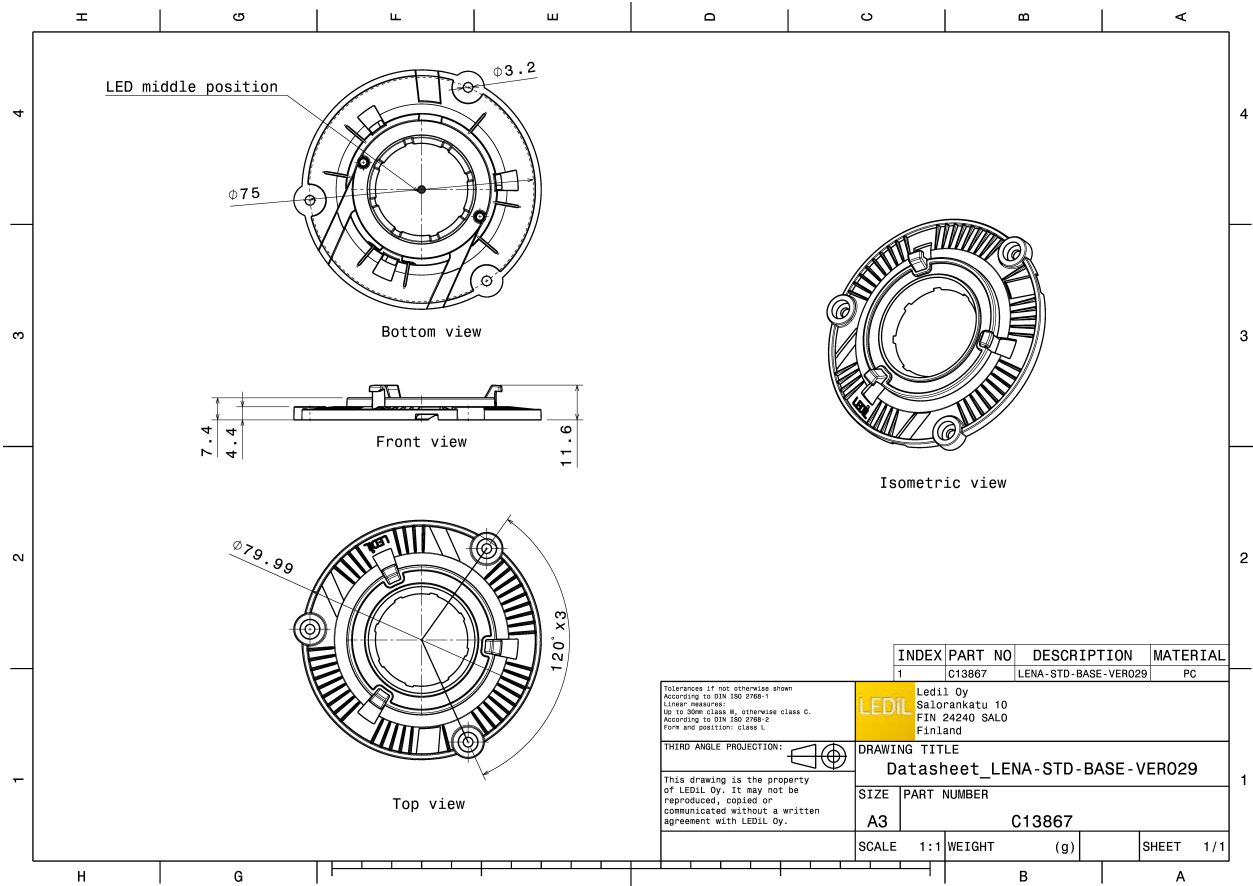


MATERIALS:

Component	Type	Material	Colour	Finish
LENA-STD-BASE-VERO29	Base part	PC	white	

ORDERING INFORMATION:

Component	Qty in box	MOQ	MPQ	Box weight (kg)
C13867_LENA-STD-BASE-VERO29 » Box size: 270 x 180 x 115 mm	60	60	60	3.9



See also our general installation guide: www.ledil.com/installation_guide