

LENA-STD-BASE-VERO13-18

Basepart for LENA and LENINA reflectors. Compatible with Bridgelux VERO13 and VERO18.

TECHNICAL SPECIFICATIONS:

Dimensions	Ø 80.0 mm
Height	11.6 mm
Fastening	screw
ROHS compliant	yes ⓘ

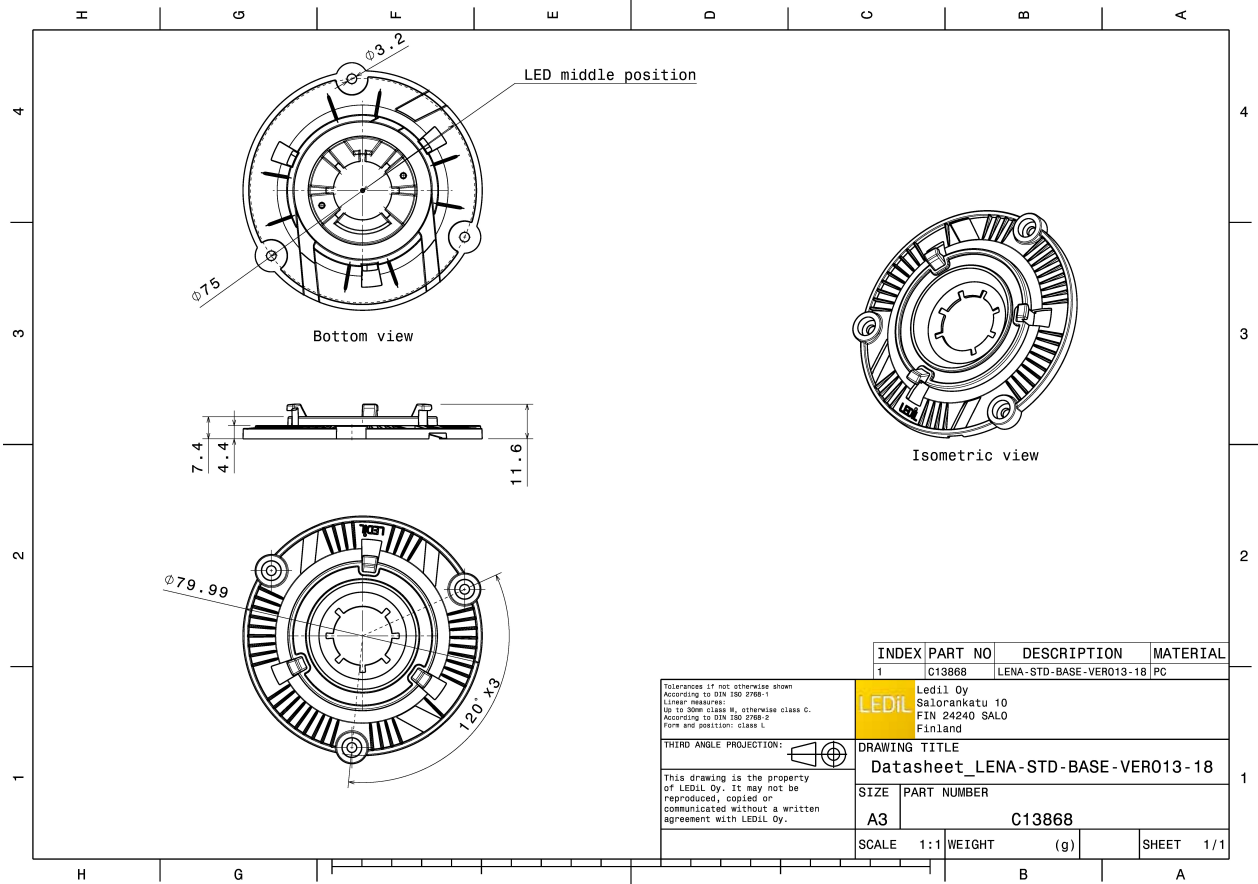


MATERIAL SPECIFICATIONS:

Component	Type	Material	Colour	Finish
LENA-STD-BASE-VERO13-18	Base part	PC	white	

ORDERING INFORMATION:

Component	Qty in box	MOQ	MPQ	Box weight (kg)
C13868_LENA-STD-BASE-VERO13-18 » Box size: 270 x 180 x 115 mm	60	60	60	1.4



See also our general installation guide: www.ledil.com/installation_guide