

STRADA-T-6X1-ME

Beam with excellent longitudinal luminance uniformity fulfilling EN13201 M-class requirements where road width is equal to or less than the pole height. Optimized for Osram Oslon Square.

TECHNICAL SPECIFICATIONS:

Dimensions	119.8 x 25.2 mm
Height	6.8 mm
Fastening	glue, pin, screw
ROHS compliant	yes ⓘ

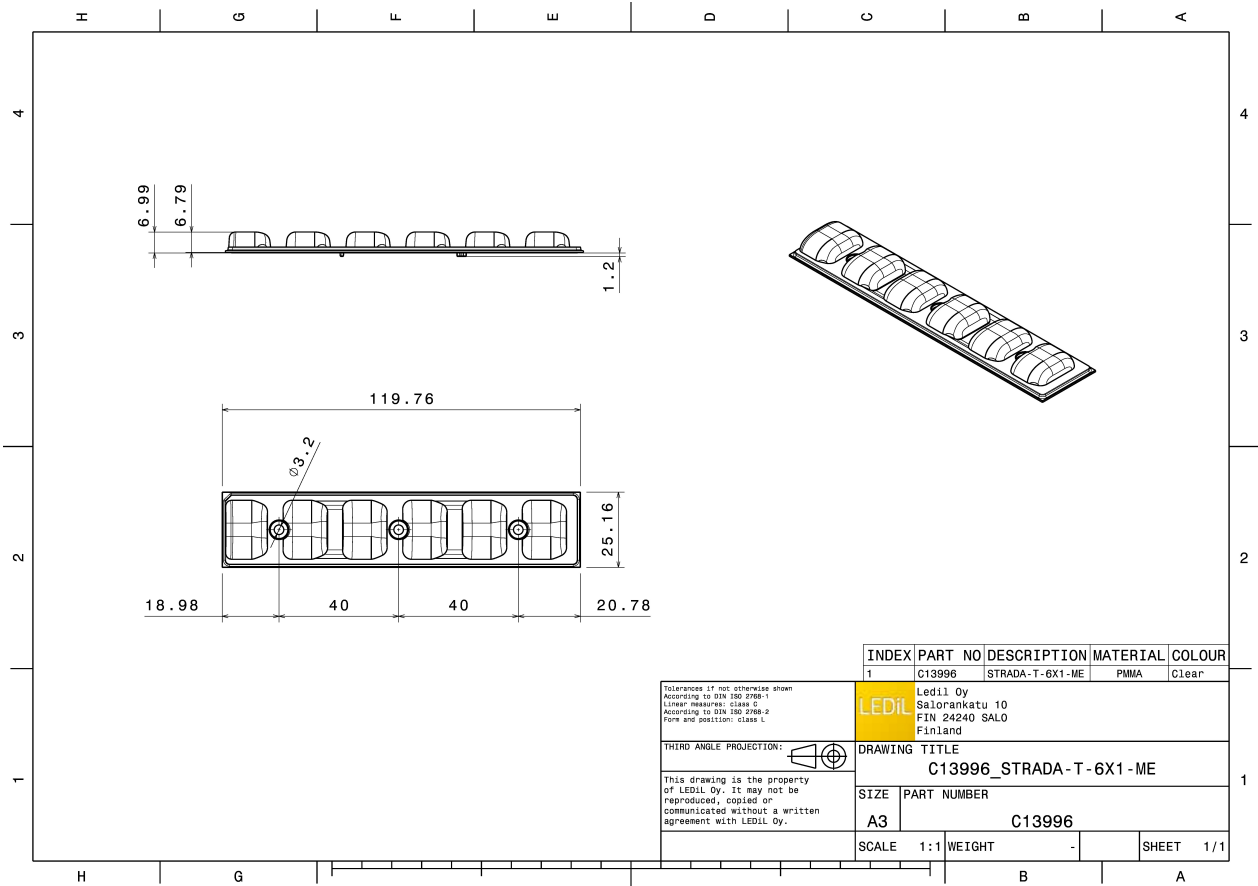


MATERIAL SPECIFICATIONS:

Component	Type	Material	Colour	Finish
STRADA-T-6X1-ME	Multi-lens	PMMA	clear	

ORDERING INFORMATION:

Component	Qty in box	MOQ	MPQ	Box weight (kg)
C13996_STRADA-T-6X1-ME » Box size: 480 x 280 x 300 mm	858	104	26	12.8



See also our general installation guide: www.ledil.com/installation_guide

PHOTOMETRIC DATA (MEASURED):

OSRAM
Opto Semiconductors

LED	OSLON Square PC
FWHM / FWTM	Asymmetric
Efficiency	83 %
Peak intensity	0.7 cd/lm
LEDs/each optic	1
Light colour	White

Required components:

Protective plate, glass