

## PF-NSX-SOCKET

Socket with press fit interface. Compatible with MIRELLA-PF and BARBARA-PF for CREE Nichia NSCxL036A, J- and L-Type (LES 9 and 11mm) COBs.

### TECHNICAL SPECIFICATIONS:

Dimensions	Ø 38.6 mm
Height	6.5 mm
Fastening	screw
ROHS compliant	yes ⓘ

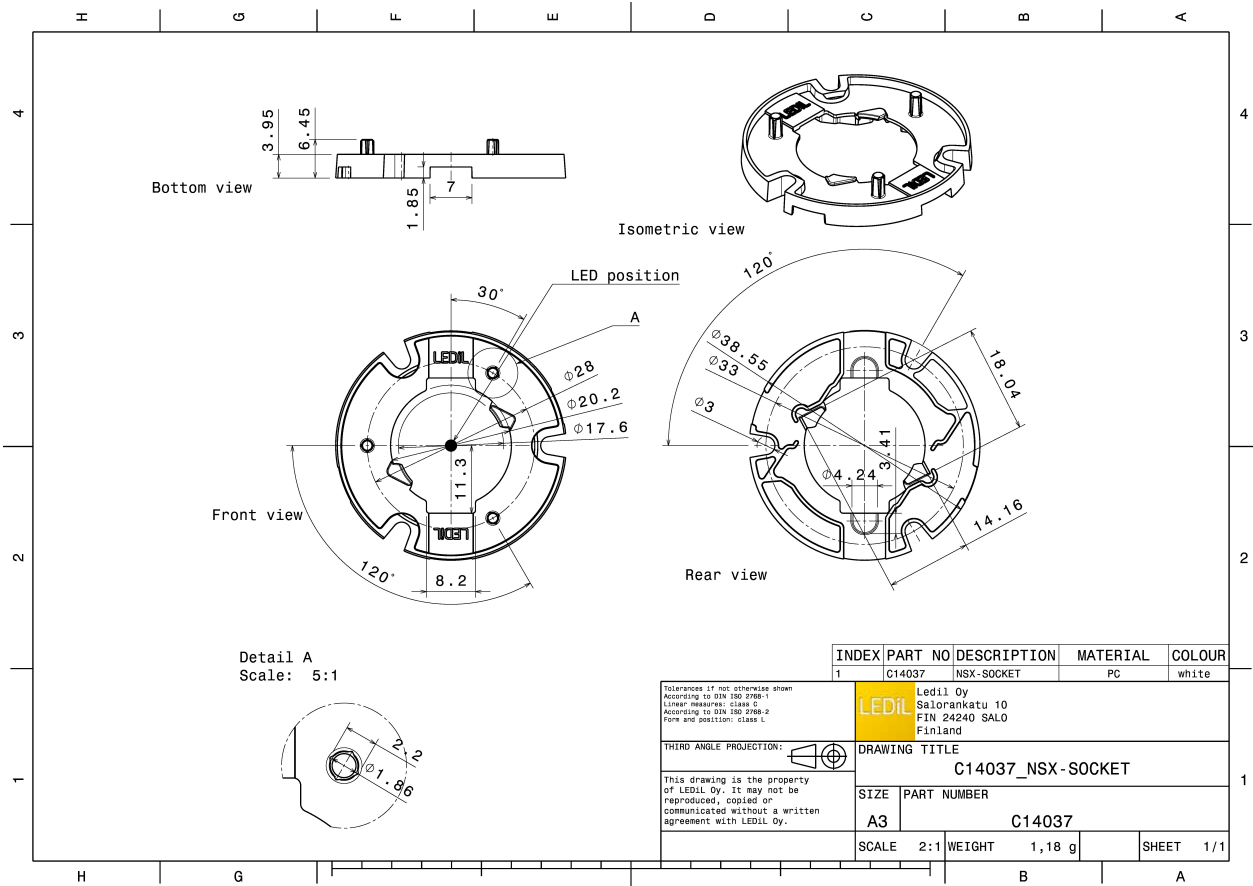


### MATERIAL SPECIFICATIONS:

Component	Type	Material	Colour	Finish
PF-NSX-SOCKET	Base part	PC	white	

### ORDERING INFORMATION:

Component	Qty in box	MOQ	MPQ	Box weight (kg)
C14037_PF-NSX-SOCKET » Box size: 380 x 280 x 270 mm	336		28	0.6



See also our general installation guide: [www.ledil.com/installation\\_guide](http://www.ledil.com/installation_guide)