

SANDRA-12-O

~40° + 20° oval beam

TECHNICAL SPECIFICATIONS:

| | |
|----------------|-----------|
| Dimensions | Ø 67.0 mm |
| Height | 11.1 mm |
| Fastening | pin |
| ROHS compliant | yes ⓘ |

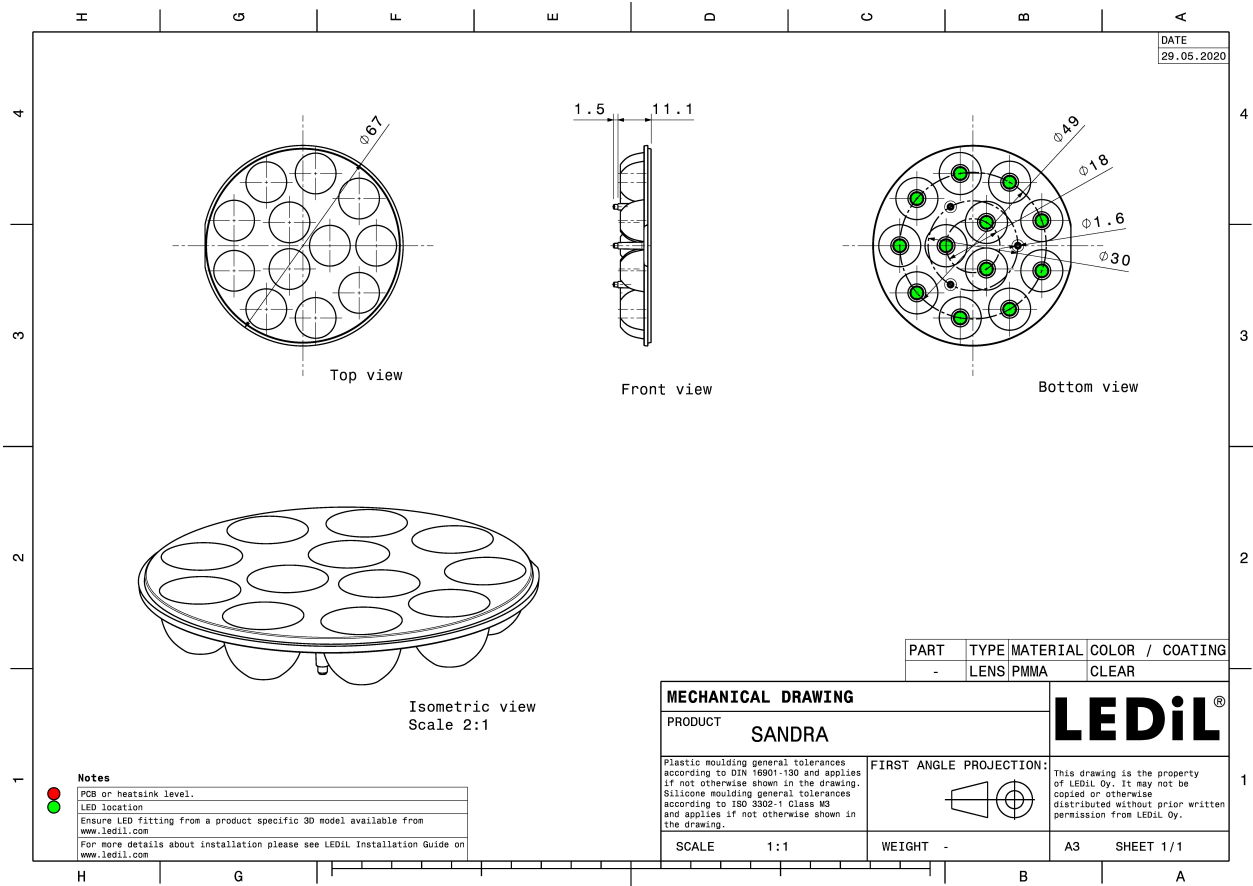
MATERIAL SPECIFICATIONS:

| Component | Type | Material | Colour | Finish |
|-------------|------------|----------|--------|--------|
| SANDRA-12-O | Multi-lens | PMMA | clear | |

ORDERING INFORMATION:

| Component | Qty in box | MOQ | MPQ | Box weight (kg) |
|--|------------|-----|-----|-----------------|
| C14250_SANDRA-12-O » Box size: 480 x 280 x 300 mm | 306 | | 18 | 7.4 |



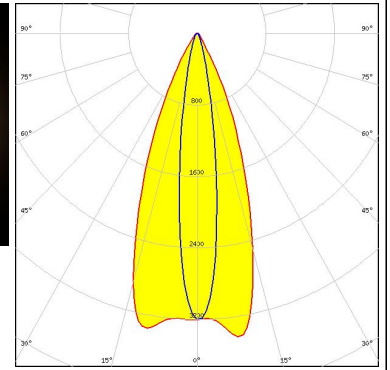
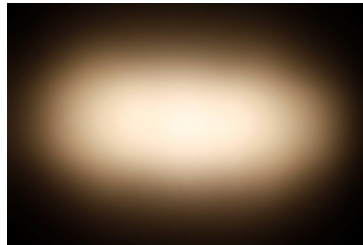


See also our general installation guide: www.ledil.com/installation_guide

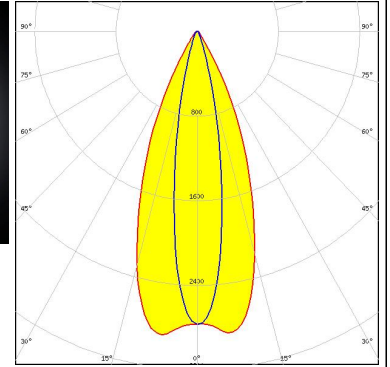
PHOTOMETRIC DATA (MEASURED):



LED XP-E2
 FWHM / FWTM 40.0 + 15.0°
 Efficiency 91 %
 Peak intensity 3.4 cd/lm
 LEDs/each optic 1
 Light colour White
 Required components:



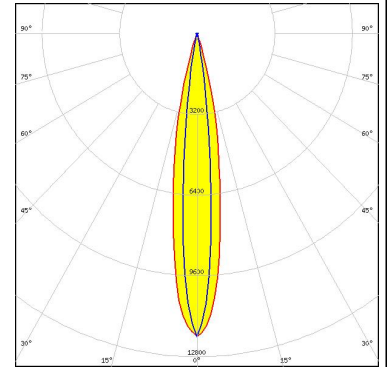
LED XP-G2
 FWHM / FWTM 42.0 + 19.0°
 Efficiency 90 %
 Peak intensity 2.8 cd/lm
 LEDs/each optic 1
 Light colour White
 Required components:



PHOTOMETRIC DATA (SIMULATED):

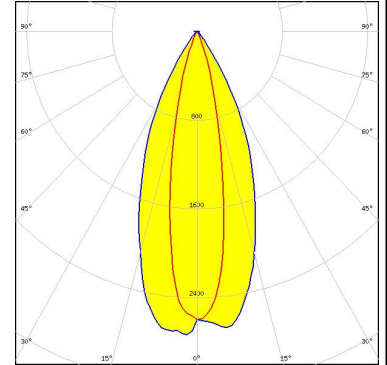
CREE LED

LED XD16
 FWHM / FWTM 18.0 + 11.0° / 33.0 + 20.0°
 Efficiency 94 %
 Peak intensity 12 cd/lm
 LEDs/each optic 1
 Light colour White
 Required components:



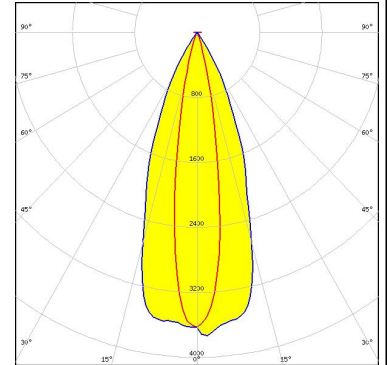
CREE LED

LED XP-G3
 FWHM / FWTM 44.0 + 21.0° / 71.0 + 40.0°
 Efficiency 94 %
 Peak intensity 2.7 cd/lm
 LEDs/each optic 1
 Light colour White
 Required components:



CREE LED

LED XT-E
 FWHM / FWTM 39.0 + 17.0° / 65.0 + 32.0°
 Efficiency 92 %
 Peak intensity 3.7 cd/lm
 LEDs/each optic 1
 Light colour White
 Required components:



SAMSUNG

LED LH351C
 FWHM / FWTM 20.0 + 46.0° / 39.0 + 71.0°
 Efficiency 96 %
 Peak intensity 2.8 cd/lm
 LEDs/each optic 1
 Light colour White
 Required components:

