

HB-2X2-W-PC

~50° wide beam. Variant made from PC.

TECHNICAL SPECIFICATIONS:

Dimensions	50.0 x 50.0 mm
Height	8.5 mm
Fastening	pin, screw
ROHS compliant	yes ⓘ

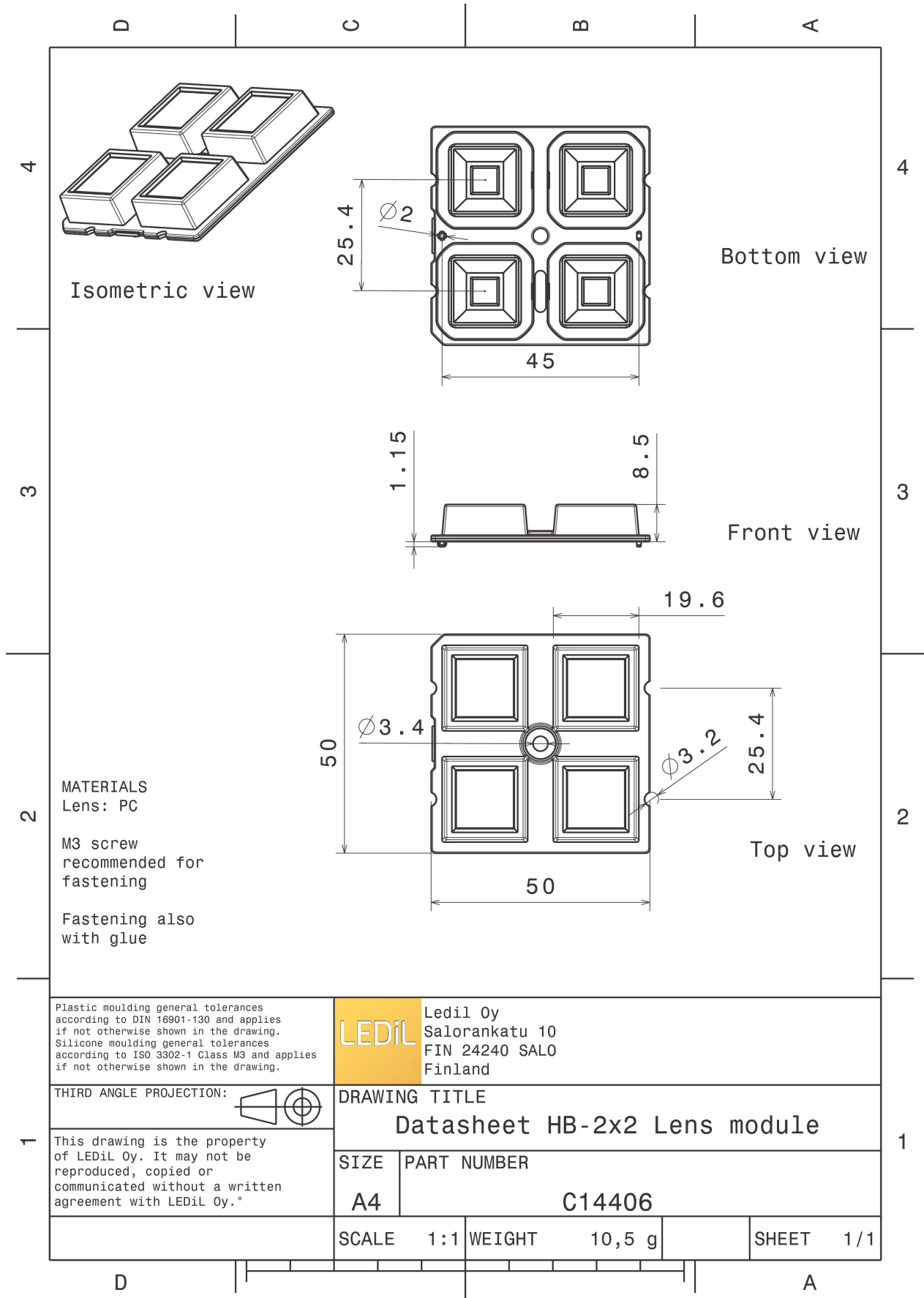


MATERIAL SPECIFICATIONS:

Component	Type	Material	Colour	Finish
HB-2X2-W-PC	Multi-lens	PC	clear	

ORDERING INFORMATION:

Component	Qty in box	MOQ	MPQ	Box weight (kg)
C14406_HB-2X2-W-PC » Box size: 480 x 280 x 300 mm	800	160	160	9.1

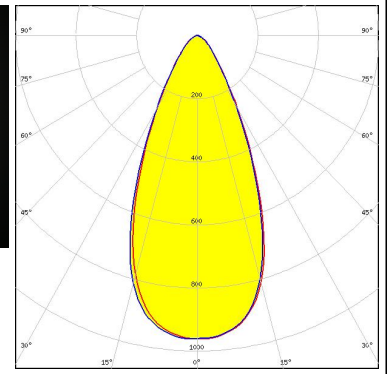


See also our general installation guide: www.ledil.com/installation_guide

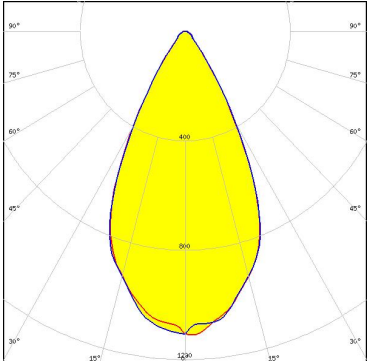
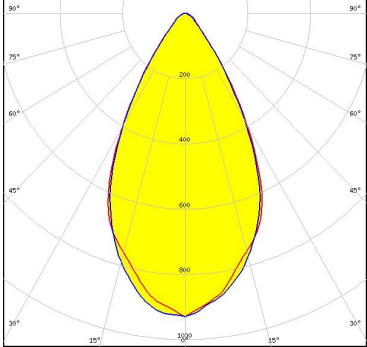
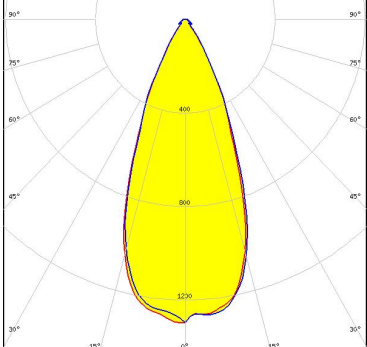
PHOTOMETRIC DATA (MEASURED):



LED	XT-E
FWHM / FWTM	47.0° / 85.0°
Efficiency	75 %
Peak intensity	0.9 cd/lm
LEDs/each optic	1
Light colour	White
Required components:	



PHOTOMETRIC DATA (SIMULATED):

<p>NICHIA</p> <p>LED: NV4WB35AM FWHM / FWTM: 54.0° / 78.0° Efficiency: 90 % Peak intensity: 1.1 cd/lm LEDs/each optic: 1 Light colour: White Required components:</p>	
<p>OSRAM Opto Semiconductors</p> <p>LED: Duris S8 FWHM / FWTM: 56.0° / 86.0° Efficiency: 86 % Peak intensity: 0.9 cd/lm LEDs/each optic: 1 Light colour: White Required components:</p>	
<p>OSRAM Opto Semiconductors</p> <p>LED: OSCONIQ C 2424 FWHM / FWTM: 42.0 + 43.0° / 68.0 + 69.0° Efficiency: 90 % Peak intensity: 1.3 cd/lm LEDs/each optic: 1 Light colour: White Required components:</p>	
<p>SAMSUNG</p> <p>LED: LH231B FWHM / FWTM: 48.0° / 76.0° Efficiency: 90 % Peak intensity: 1.2 cd/lm LEDs/each optic: 4 Light colour: White Required components:</p>	