

JENNY-HLD-A-BLK

Black frame for JENNY optics

SPECIFICATION:

Dimensions	34.8 x 50.0 mm
Height	5 mm
Fastening	screw
ROHS compliant	yes ⓘ

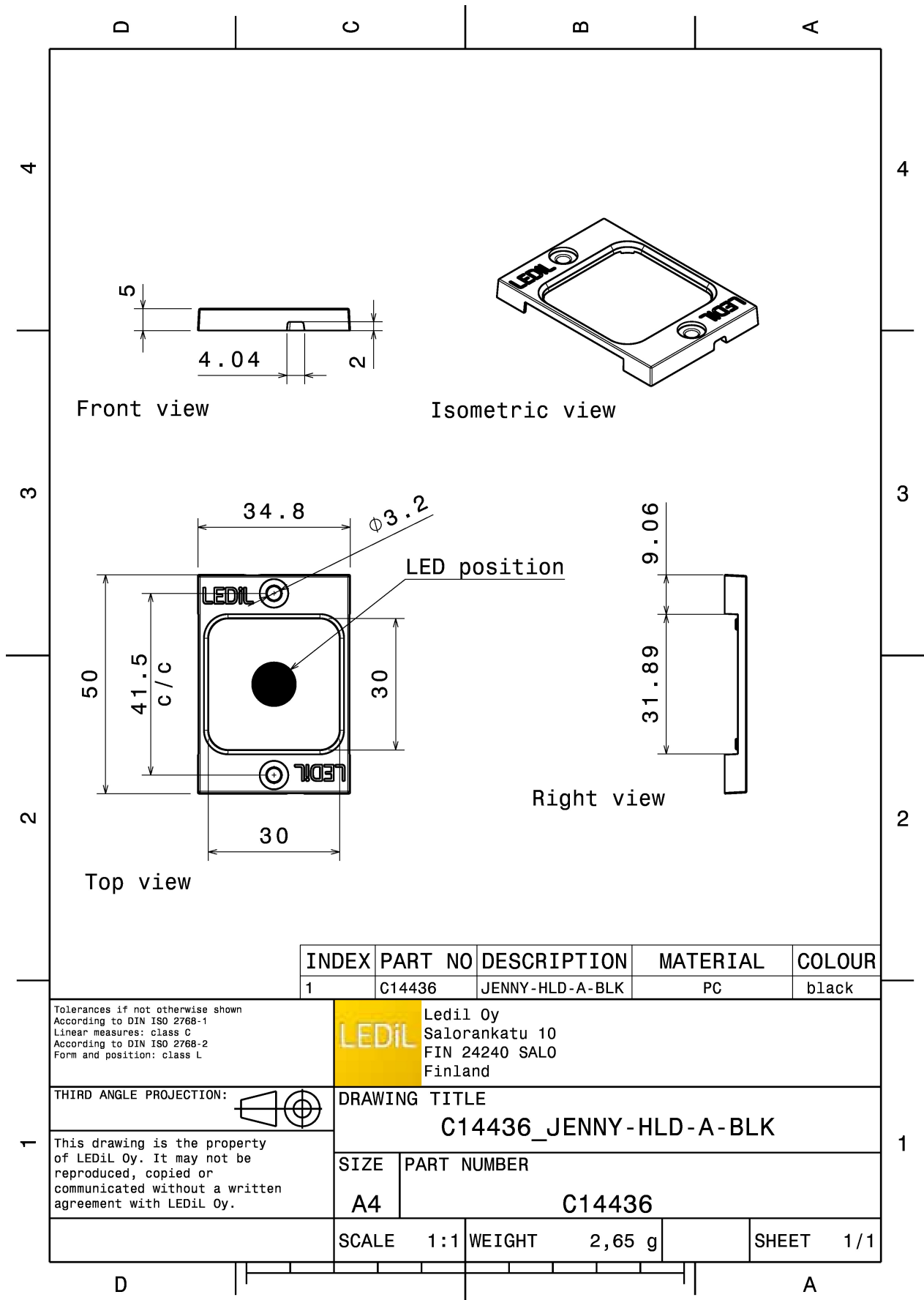
MATERIALS:

Component	Type	Material	Colour	Finish
JENNY-HLD-A-BLK	Accessory	PC	black	

ORDERING INFORMATION:

Component	Qty in box	MOQ	MPQ	Box weight (kg)
C14436_JENNY-HLD-A-BLK » Box size: 400 x 300 x 300 mm	1600	120	20	5.5





See also our general installation guide: www.ledil.com/installation_guide

AVAILABLE LEDiL PRODUCTS:

Product name	Description
F14325_JENNY-8X1-CY	~105° + 105° batwing light distribution for canopy and symmetrical tunnel lighting. Variant with 8 lenses and cable channels on the sides.
F14326_JENNY-8X1-T4	IESNA Type IV light distribution for wider roads and large outdoor areas. Variant with 8 lenses and cable channels on the sides.
F14531_JENNY-CY	~105° + 105° batwing light distribution for canopy and symmetrical tunnel lighting. Variant with wire channels on the sides enabling compatibility with small COBs.
F14563_JENNY-T4	IESNA Type IV light distribution for wider roads and large outdoor areas. Variant with wire channels on the sides enabling compatibility with small COBs.
F15382_JENNY-CY-G2	~105° + 105° batwing light distribution for canopy and symmetrical tunnel lighting.
F15383_JENNY-T4-G2	IESNA Type IV light distribution for wider roads and large outdoor areas.
F15384_JENNY-8X1-T4-G2	IESNA Type IV light distribution for wider roads and large outdoor areas
F15386_JENNY-8X1-CY-G2	~105° + 105° batwing light distribution for canopy and symmetrical tunnel lighting. Variant with 8 lenses.
F15538_JENNY-20	~20° beam
F15539_JENNY-40	~40° beam
F15541_JENNY-60	~60° beam
F15553_JENNY-8X1-20	~20° beam. 8X1 variant.
F15554_JENNY-8X1-40	~40° beam. 8X1 variant.
F15555_JENNY-8X1-60	~60° beam. 8X1 variant.
F15574_JENNY-8X1-FT45	Forward throwing beam with peak in 45°. 8X1 variant.
F15596_JENNY-FT45	Forward throwing beam with peak in 45°
F15909_JENNY-FT65	Forward throwing beam with peak in 65°
F15910_JENNY-8X1-FT65	Forward throwing beam with peak in 65°. 8X1 variant.