

## STRADELLA-8-HB-M-PC

~60° medium beam for industrial applications.  
Variant made from PC.

### SPECIFICATION:

Dimensions	49.5 x 49.5 mm
Height	5.7 mm
Fastening	pin, screw
ROHS compliant	yes ⓘ

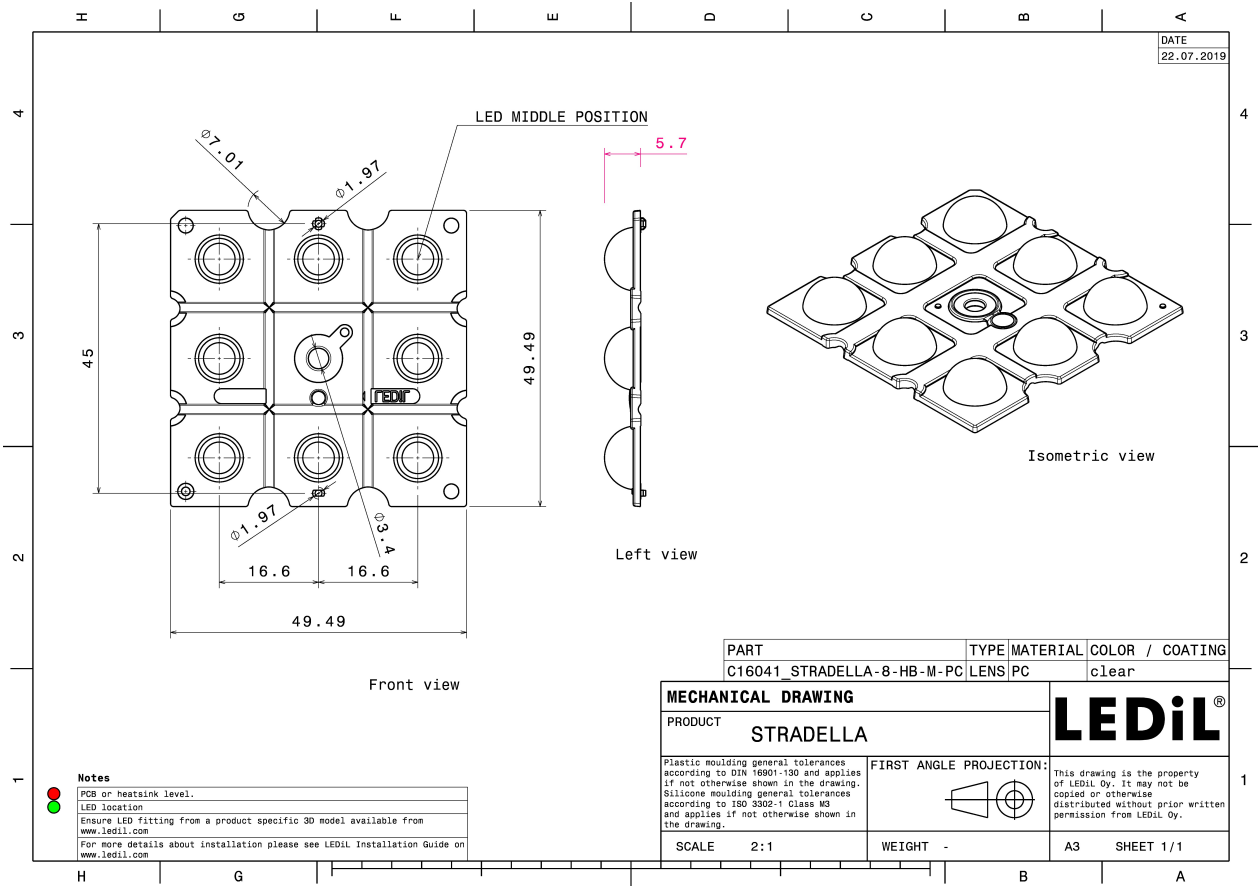


### MATERIALS:

Component	Type	Material	Colour	Finish
STRADELLA-8-HB-M-PC	Multi-lens	PC	clear	

### ORDERING INFORMATION:

Component	Qty in box	MOQ	MPQ	Box weight (kg)
C16041_STRADELLA-8-HB-M-PC » Box size: 476 x 273 x 292 mm	800	160	160	4.5

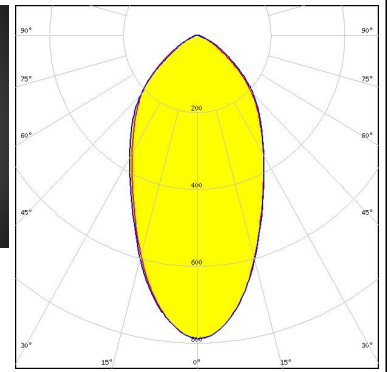


See also our general installation guide: [www.ledil.com/installation\\_guide](http://www.ledil.com/installation_guide)

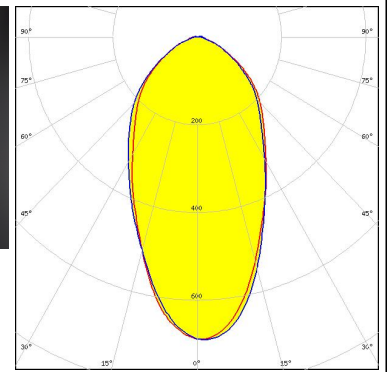
#### OPTICAL RESULTS (MEASURED):



LED J Series 3030  
 FWHM / FWTM 55.0° / 117.0°  
 Efficiency 94 %  
 Peak intensity 0.8 cd/lm  
 LEDs/each optic 1  
 Light colour White  
 Required components:



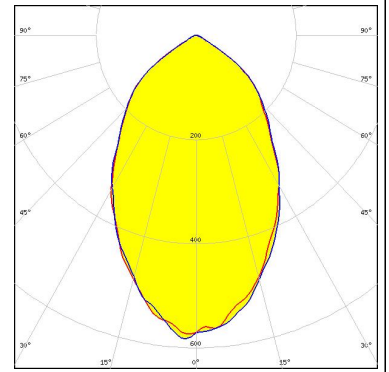
LED XT-E  
 FWHM / FWTM 56.0° / 128.0°  
 Efficiency 94 %  
 Peak intensity 0.7 cd/lm  
 LEDs/each optic 1  
 Light colour White  
 Required components:



#### OPTICAL RESULTS (SIMULATED):



LED NVSW519A  
FWHM / FWTM 68.0° / 118.0°  
Efficiency 82 %  
Peak intensity 0.6 cd/lm  
LEDs/each optic 1  
Light colour White  
Required components:



LED OSLOM Square CSSRM2/CSSRM3  
FWHM / FWTM 56.0° / 118.0°  
Efficiency 93 %  
Peak intensity 0.7 cd/lm  
LEDs/each optic 1  
Light colour White  
Required components:

