

HB-2X2-O-PC

~20° + 115° oval beam for aisle lighting

SPECIFICATION:

Dimensions	50.0 x 50.0 mm
Height	10.6 mm
Fastening	glue, pin, screw
ROHS compliant	yes ⓘ

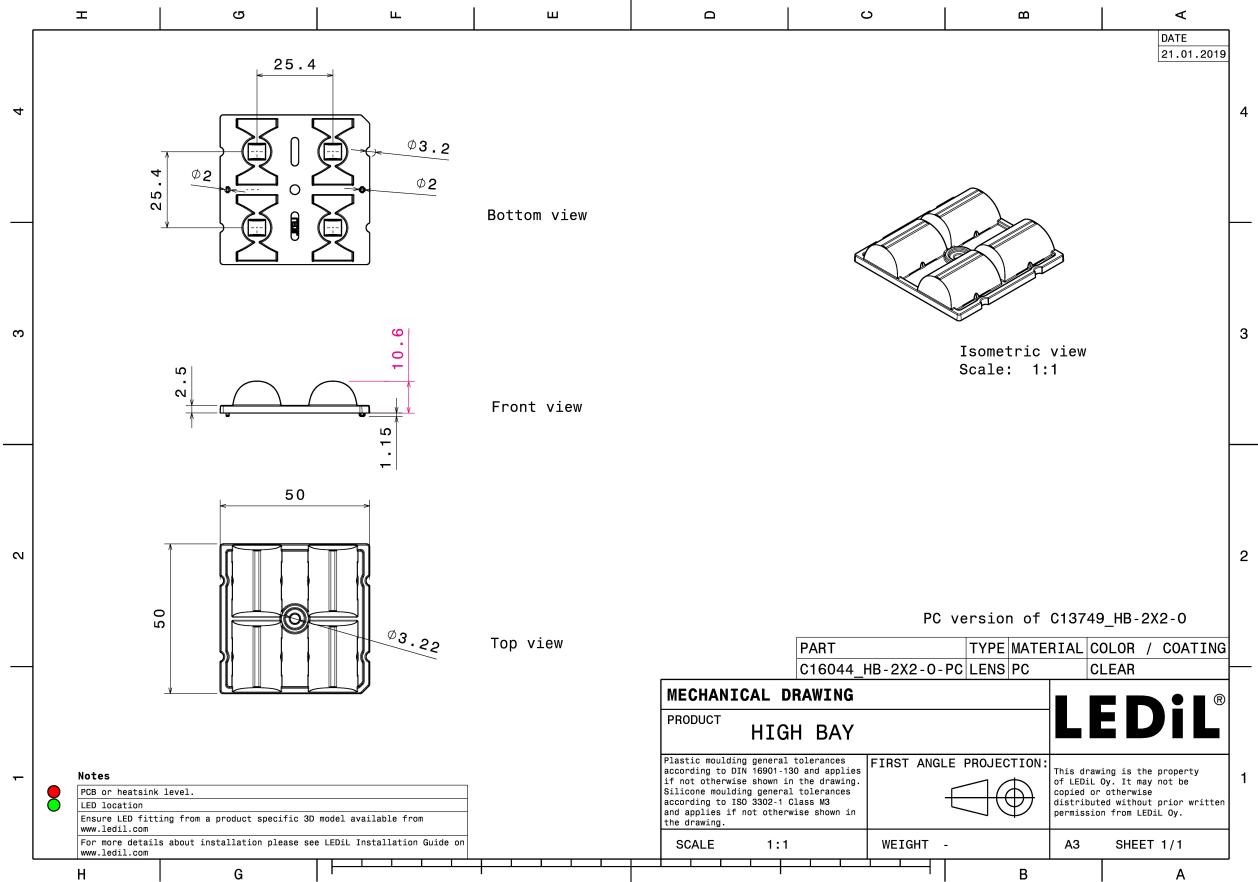
MATERIALS:

Component	Type	Material	Colour	Finish
HB-2X2-O-PC	Multi-lens	PC	clear	



ORDERING INFORMATION:

Component	Qty in box	MOQ	MPQ	Box weight (kg)
C16044_HB-2X2-O-PC » Box size: 476 x 273 x 292 mm	800	160	160	10.4

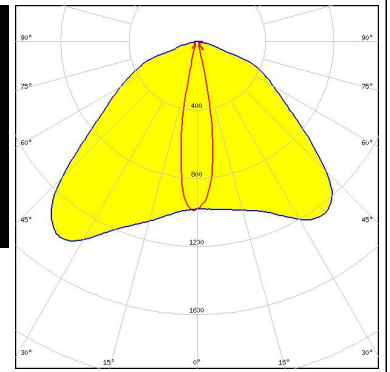
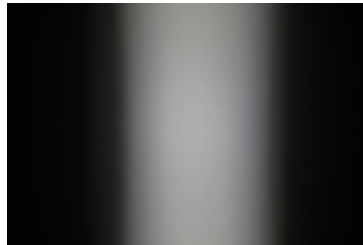


See also our general installation guide: www.ledil.com/installation_guide

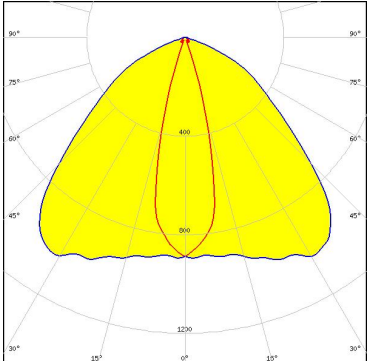
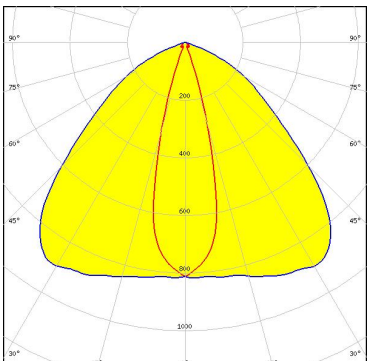
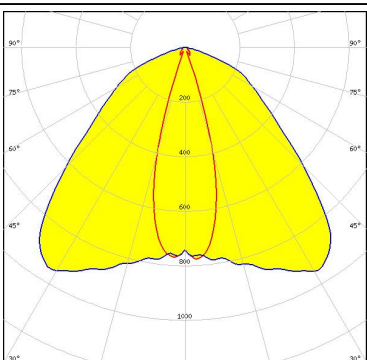
OPTICAL RESULTS (MEASURED):



LED	XP-G2
FWHM / FWTM	20.0 + 122.0° / 32.0 + 151.0°
Efficiency	92 %
Peak intensity	1.4 cd/lm
LEDs/each optic	1
Light colour	White
Required components:	



OPTICAL RESULTS (SIMULATED):

<p>LUMILEDS</p> <p>LED LUXEON XR-HL2X (L2H2-xxxxxxxMLU010)</p> <p>FWHM / FWTM 26.0 + 102.0° / 38.0 + 138.0°</p> <p>Efficiency 90 %</p> <p>Peak intensity 1 cd/lm</p> <p>LEDs/each optic 1</p> <p>Light colour White</p> <p>Required components:</p>	
<p>LUMILEDS</p> <p>LED LUXEON XR-HL2X (L2H2-xxxxxxxMLU010)</p> <p>FWHM / FWTM 28.0 + 100.0° / 40.0 + 136.0°</p> <p>Efficiency 81 %</p> <p>Peak intensity 0.9 cd/lm</p> <p>LEDs/each optic 1</p> <p>Light colour White</p> <p>Required components:</p> <p style="background-color: #ADD8E6; padding: 2px; display: inline-block;">Protective plate, glass</p>	
<p>NICHIA</p> <p>LED NV4WB35AM</p> <p>FWHM / FWTM 30.0 + 98.0° / 40.0 + 144.0°</p> <p>Efficiency 90 %</p> <p>Peak intensity 1 cd/lm</p> <p>LEDs/each optic 1</p> <p>Light colour White</p> <p>Required components:</p>	
<p>OSRAM Opto Semiconductors</p> <p>LED OSCONIQ C 2424</p> <p>FWHM / FWTM 18.0 + 98.0° / 28.0 + 141.0°</p> <p>Efficiency 91 %</p> <p>Peak intensity 1.4 cd/lm</p> <p>LEDs/each optic 1</p> <p>Light colour White</p> <p>Required components:</p>	