

## OLGA-S

~11° spot beam with flange

### TECHNICAL SPECIFICATIONS:

Dimensions	Ø 30.0 mm
Height	18.5 mm
Fastening	glue
ROHS compliant	yes ⓘ

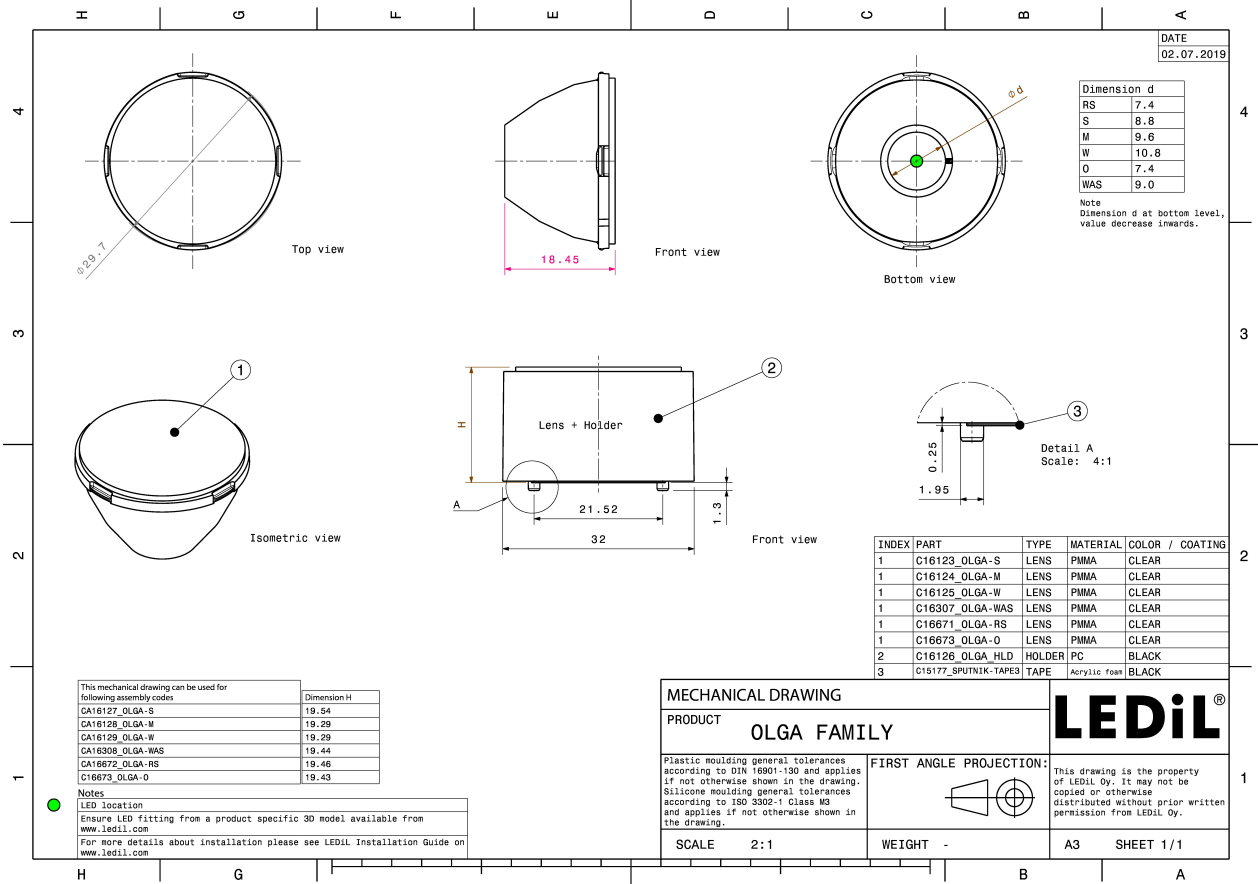
### MATERIAL SPECIFICATIONS:

Component	Type	Material	Colour	Finish
OLGA-S	Single lens	PMMA	clear	



### ORDERING INFORMATION:

Component	Qty in box	MOQ	MPQ	Box weight (kg)
C16123_OLGA-S » Box size: 476 x 273 x 292 mm	792	132	66	7.3



See also our general installation guide: [www.ledil.com/installation\\_guide](http://www.ledil.com/installation_guide)

### PHOTOMETRIC DATA (MEASURED):

**bridgelux.**

LED	V4 HD
FWHM / FWTM	23.0° / 42.0°
Efficiency	85 %
Peak intensity	4.1 cd/lm
LEDs/each optic	1
Light colour	White
Required components:	



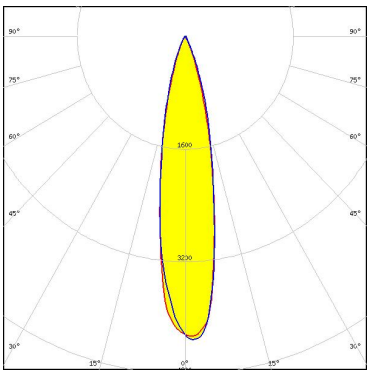

**bridgelux.**

LED	Vesta TW 6mm DP
FWHM / FWTM	27.0° / 54.0°
Efficiency	80 %
Peak intensity	2.5 cd/lm
LEDs/each optic	1
Light colour	White
Required components:	




**CITIZEN**

LED	CLU7A2 (LES 4.2mm)
FWHM / FWTM	21.0° / 43.0°
Efficiency	87 %
Peak intensity	4.3 cd/lm
LEDs/each optic	1
Light colour	White
Required components:	

**CITIZEN**

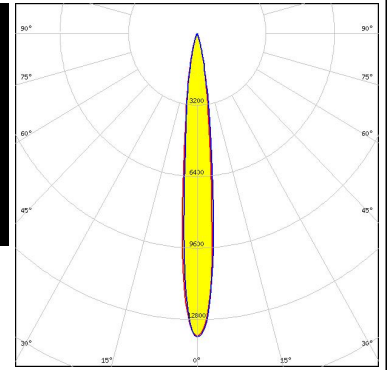
LED	CLU7B2
FWHM / FWTM	21.0° / 37.0°
Efficiency	83 %
Peak intensity	5 cd/lm
LEDs/each optic	1
Light colour	White
Required components:	



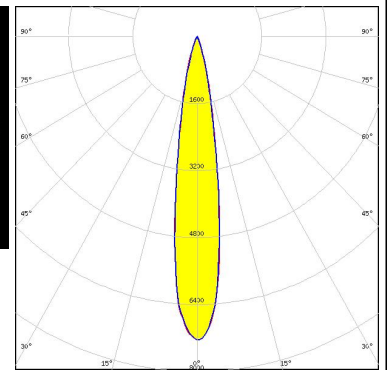
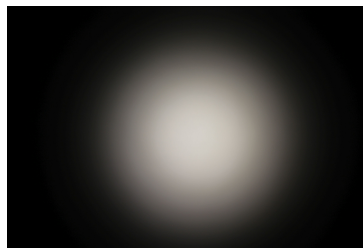

### PHOTOMETRIC DATA (MEASURED):



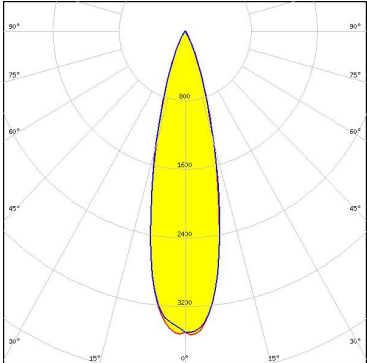
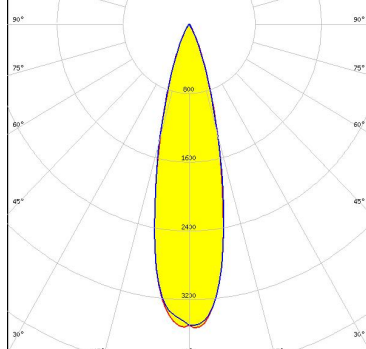
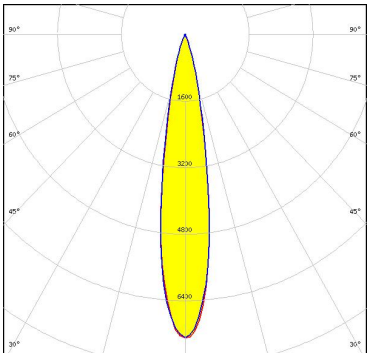
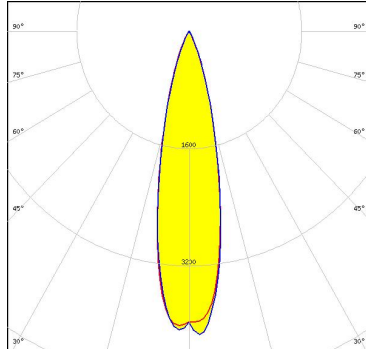
**LED** XP-E2  
**FWHM / FWTM** 11.0° / 26.0°  
**Efficiency** 89 %  
**Peak intensity** 13.6 cd/lm  
**LEDs/each optic** 1  
**Light colour** White  
**Required components:**



**LED** OSCONIQ P 3737 (3W version)  
**FWHM / FWTM** 17.0° / 33.0°  
**Efficiency** 86 %  
**Peak intensity** 7.2 cd/lm  
**LEDs/each optic** 1  
**Light colour** White  
**Required components:**



### PHOTOMETRIC DATA (SIMULATED):

<p><b>bridgelux</b></p> <p>LED: V6 HD            FWHM / FWTM: 26.0° / 48.0°            Efficiency: 89 %            Peak intensity: 3.5 cd/lm            LEDs/each optic: 1            Light colour: White            Required components:</p>	
<p><b>CREE LED</b></p> <p>LED: CXA/B 13xx            FWHM / FWTM: 24.0° / 46.0°            Efficiency: 92 %            Peak intensity: 4.2 cd/lm            LEDs/each optic: 1            Light colour: White            Required components:</p>	
<p><b>LUMINUS</b></p> <p>LED: CXM-3            FWHM / FWTM: 18.0° / 34.0°            Efficiency: 94 %            Peak intensity: 7.3 cd/lm            LEDs/each optic: 1            Light colour: White            Required components:</p>	
<p><b>LUMINUS</b></p> <p>LED: CXM-4            FWHM / FWTM: 22.0° / 40.0°            Efficiency: 93 %            Peak intensity: 5.4 cd/lm            LEDs/each optic: 1            Light colour: White            Required components:</p>	

### PHOTOMETRIC DATA (SIMULATED):

 SEOUL SEMICONDUCTOR		
LED	MJT COB LES 6	
FWHM / FWTM	24.0° / 47.0°	
Efficiency	92 %	
Peak intensity	3.8 cd/lm	
LEDs/each optic	1	
Light colour	White	
Required components:		
<b>XICATO</b>		
LED	XOB 6 mm	
FWHM / FWTM	24.0° / 47.0°	
Efficiency	90 %	
Peak intensity	3.8 cd/lm	
LEDs/each optic	1	
Light colour	White	
Required components:		

