

OLGA-M

~30° medium beam with flange

TECHNICAL SPECIFICATIONS:

Dimensions	Ø 30.0 mm
Height	18.5 mm
Fastening	glue
ROHS compliant	yes ⓘ

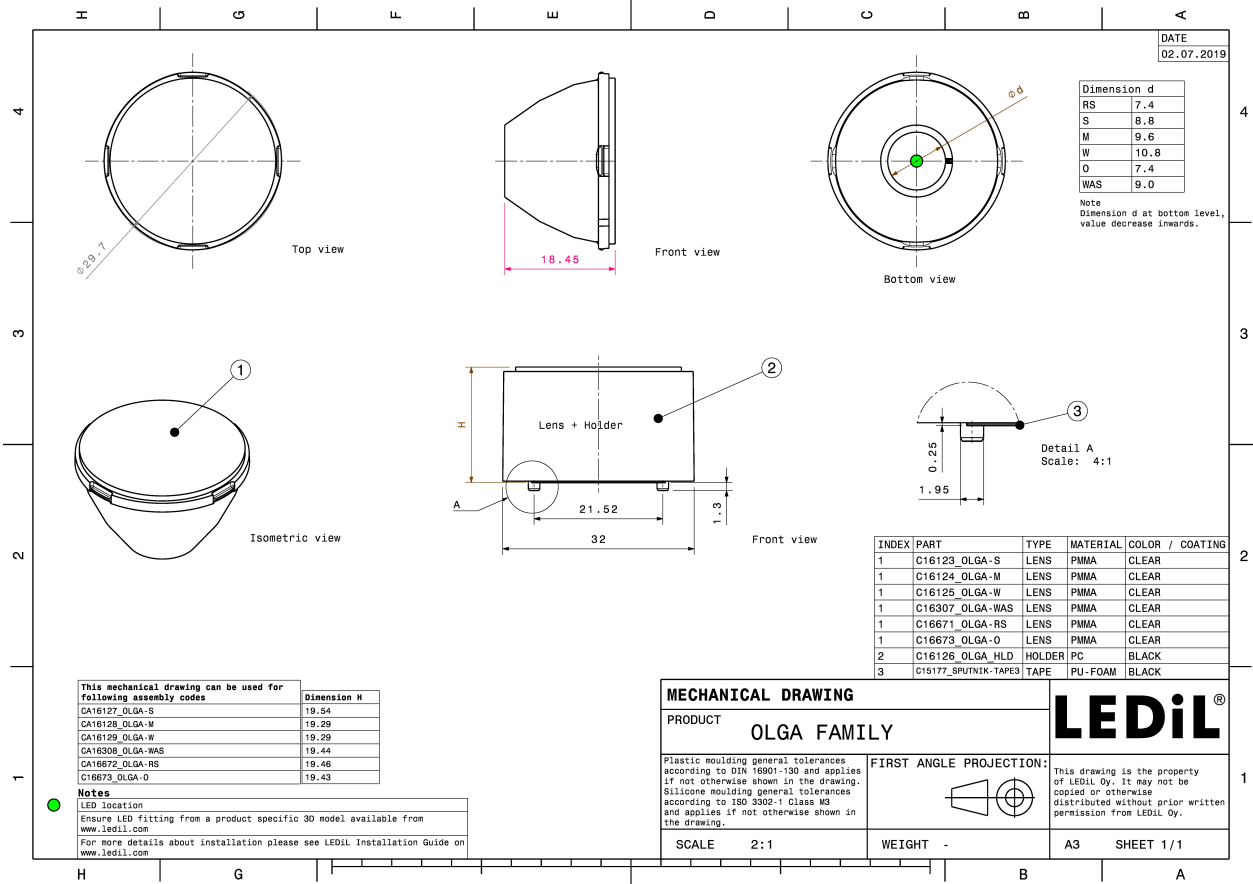
MATERIAL SPECIFICATIONS:

Component	Type	Material	Colour	Finish
OLGA-M	Single lens	PMMA	clear	



ORDERING INFORMATION:

Component	Qty in box	MOQ	MPQ	Box weight (kg)
C16124_OLGA-M » Box size: 476 x 273 x 292 mm	792	132	66	7.3



See also our general installation guide: www.ledil.com/installation_guide

PHOTOMETRIC DATA (MEASURED):

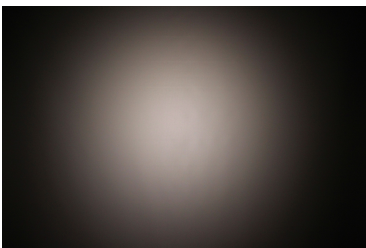
bridgelux.

LED	V4 HD
FWHM / FWTM	24.0° / 48.0°
Efficiency	86 %
Peak intensity	3.4 cd/lm
LEDs/each optic	1
Light colour	White
Required components:	




bridgelux.

LED	Vesta TW 6mm DP
FWHM / FWTM	30.0° / 61.0°
Efficiency	83 %
Peak intensity	2.1 cd/lm
LEDs/each optic	1
Light colour	White
Required components:	



CITIZEN

LED	CLU7A2 (LES 4.2mm)
FWHM / FWTM	24.0° / 48.0°
Efficiency	87 %
Peak intensity	3.4 cd/lm
LEDs/each optic	1
Light colour	White
Required components:	




CITIZEN

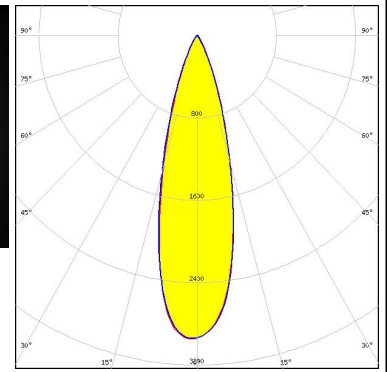
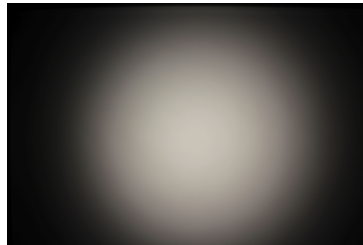
LED	CLU7B2
FWHM / FWTM	22.0° / 45.0°
Efficiency	82 %
Peak intensity	3.7 cd/lm
LEDs/each optic	1
Light colour	White
Required components:	




PHOTOMETRIC DATA (MEASURED):

OSRAM
Opto Semiconductors

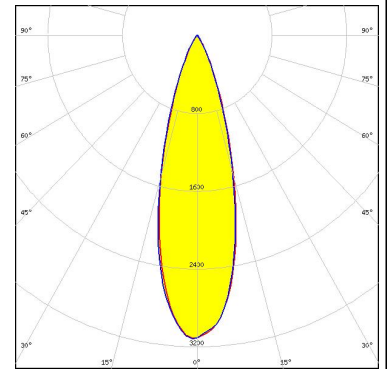
LED OSCONIQ P 3737 (3W version)
FWHM / FWTM 28.0° / 51.0°
Efficiency 84 %
Peak intensity 3 cd/lm
LEDs/each optic 1
Light colour White
Required components:



PHOTOMETRIC DATA (SIMULATED):

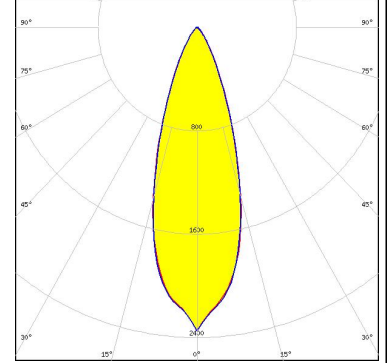


LED V6 HD
FWHM / FWTM 30.0° / 54.0°
Efficiency 95 %
Peak intensity 3.1 cd/lm
LEDs/each optic 1
Light colour White
Required components:

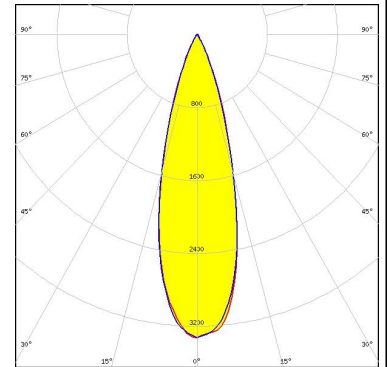


CITIZEN

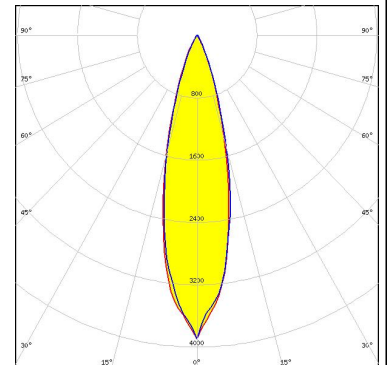
LED CLU710/711
FWHM / FWTM 34.0° / 62.0°
Efficiency 96 %
Peak intensity 2.3 cd/lm
LEDs/each optic 1
Light colour White
Required components:



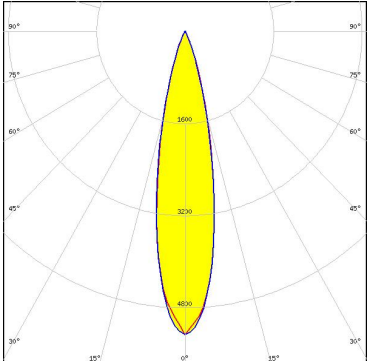
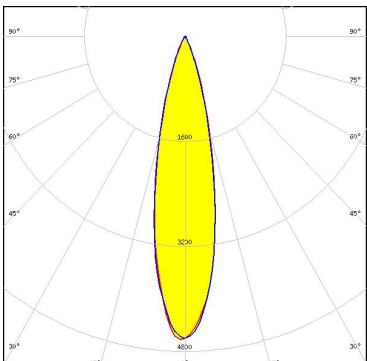
LED CMA1303
FWHM / FWTM 29.0° / 51.0°
Efficiency 95 %
Peak intensity 3.4 cd/lm
LEDs/each optic 1
Light colour White
Required components:



LED CXA/B 13xx
FWHM / FWTM 26.0° / 49.0°
Efficiency 96 %
Peak intensity 3.9 cd/lm
LEDs/each optic 1
Light colour White
Required components:



PHOTOMETRIC DATA (SIMULATED):

<p>LUMINUS</p> <p>LED CXM-3 FWHM / FWTM 22.0° / 41.0 + 42.0° Efficiency 96 % Peak intensity 5.3 cd/lm LEDs/each optic 1 Light colour White Required components:</p>	
<p>LUMINUS</p> <p>LED CXM-4 FWHM / FWTM 24.0° / 44.0° Efficiency 96 % Peak intensity 4.6 cd/lm LEDs/each optic 1 Light colour White Required components:</p>	
<p>SEOL SEMICONDUCTOR</p> <p>LED MJT COB LES 6 FWHM / FWTM 27.0° / 50.0° Efficiency 94 % Peak intensity 3.6 cd/lm LEDs/each optic 1 Light colour White Required components:</p>	