

GABRIELLA-MIDI-S

~10° spot beam with holder

TECHNICAL SPECIFICATIONS:

Dimensions	Ø 37.8 mm
Height	24.1 mm
Fastening	pin, screw
ROHS compliant	yes ⓘ

MATERIAL SPECIFICATIONS:

Component	Type	Material	Colour	Finish
C16193_GABRIELLA-MIDI-S	Single lens	PMMA	clear	
C16192_GABRIELLA-MIDI-HLD	Holder	PC	black	

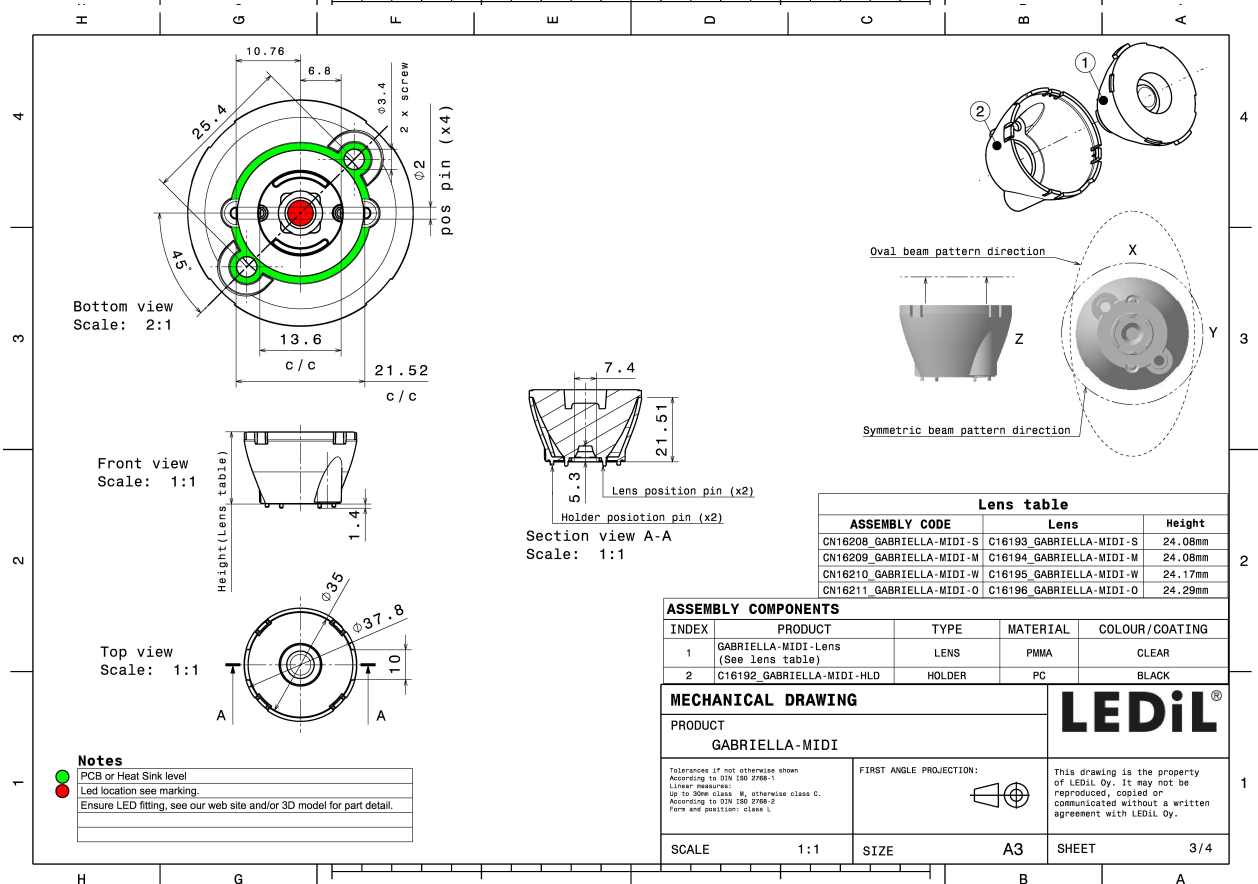
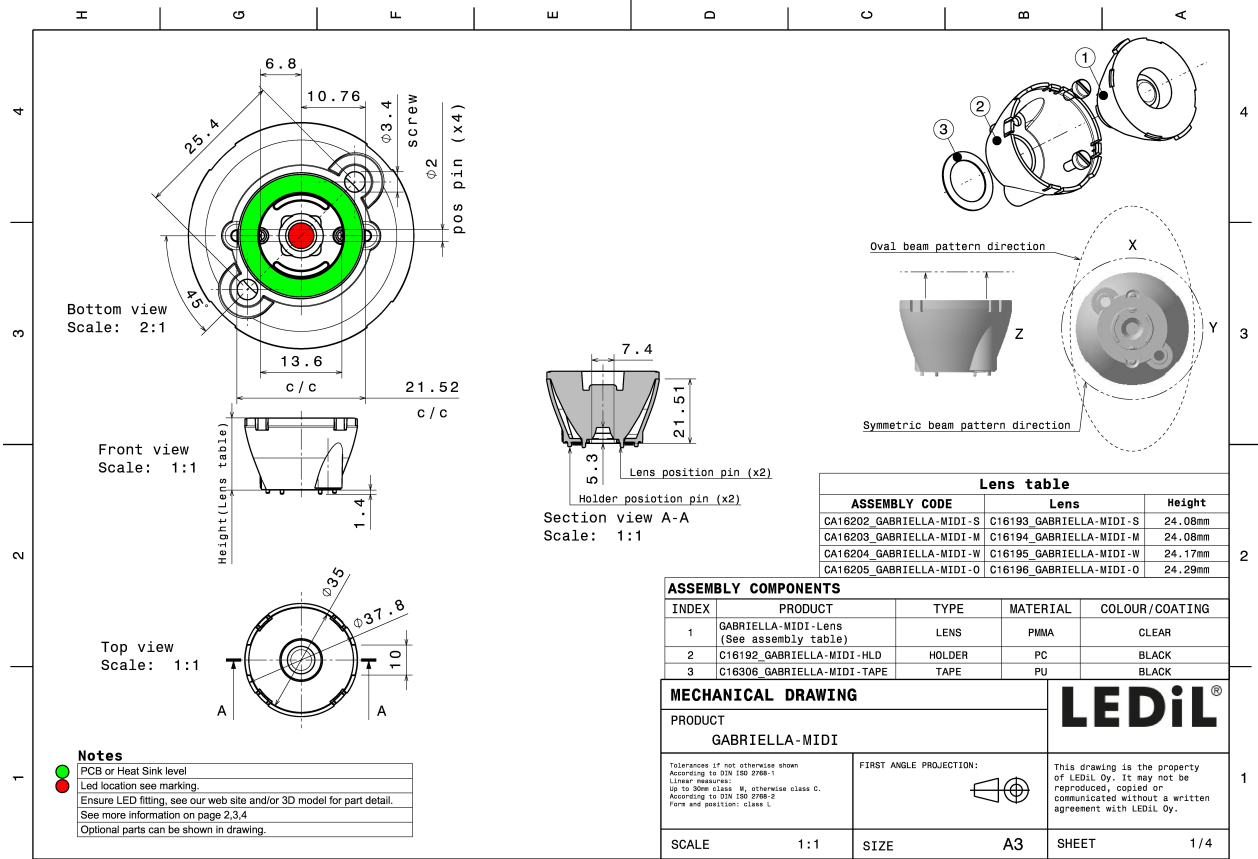
ORDERING INFORMATION:

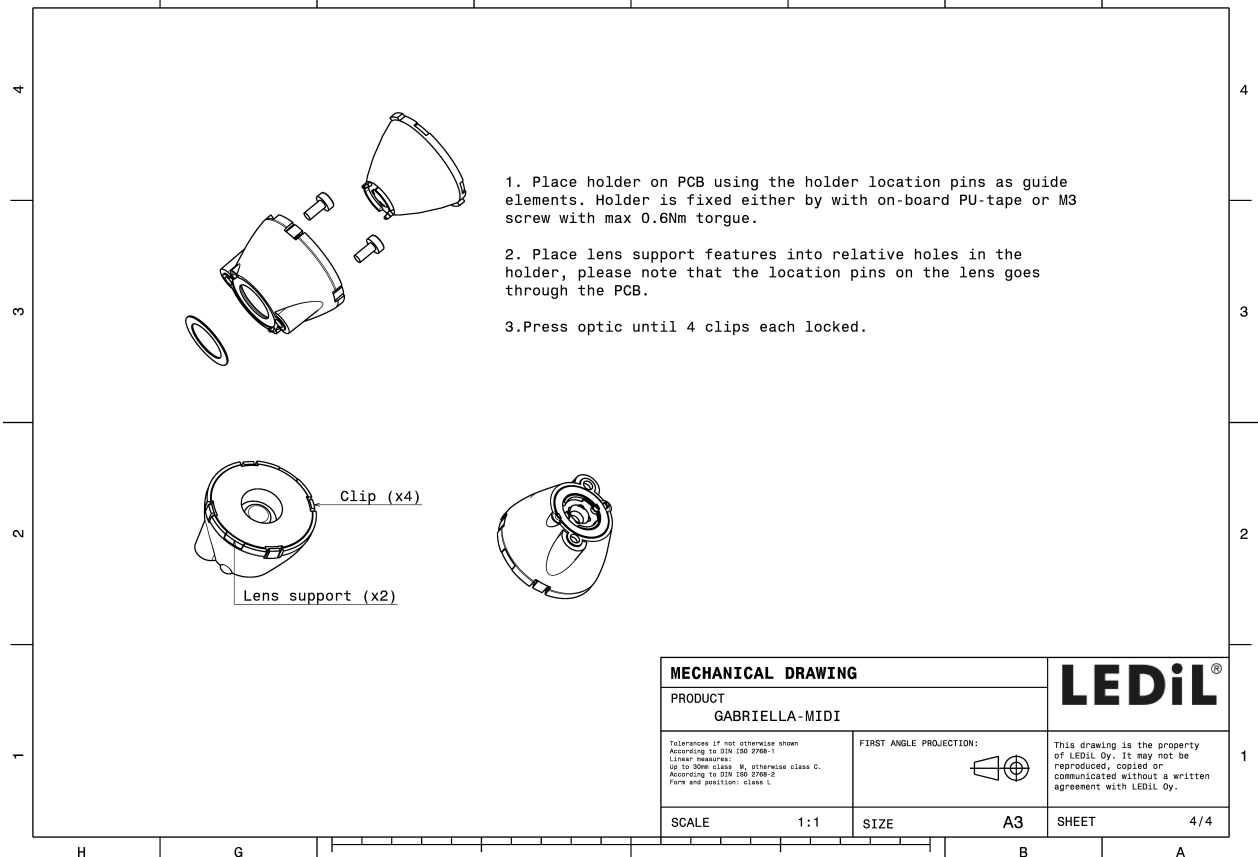
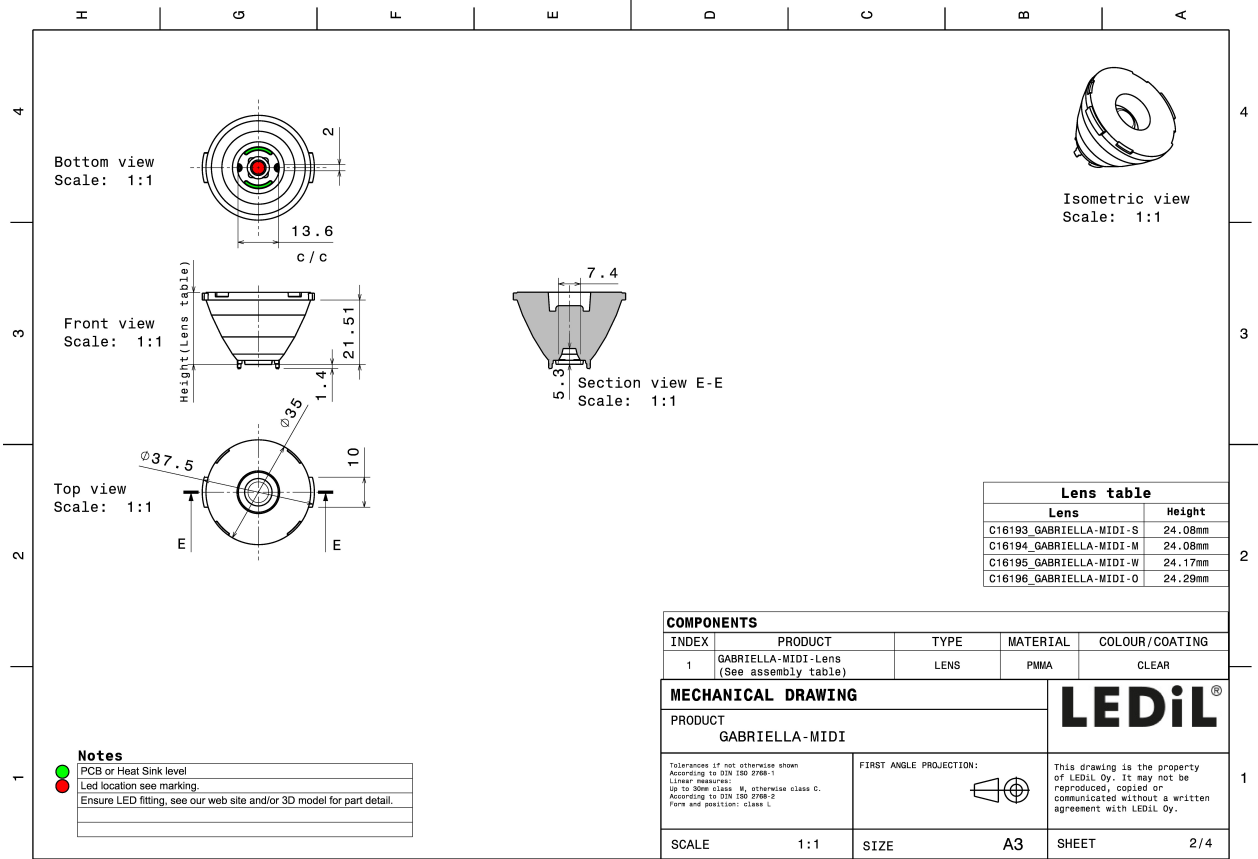
Quantities for one set:

Single lens	1
Holder	1




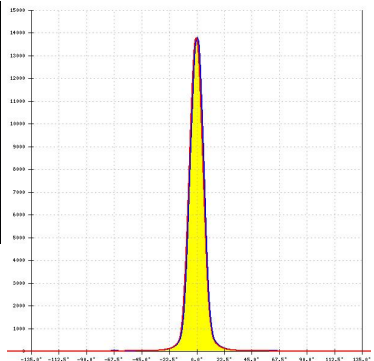
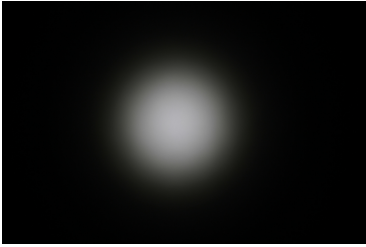
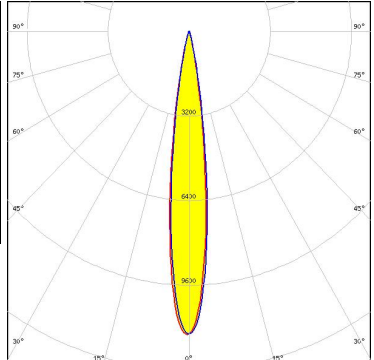

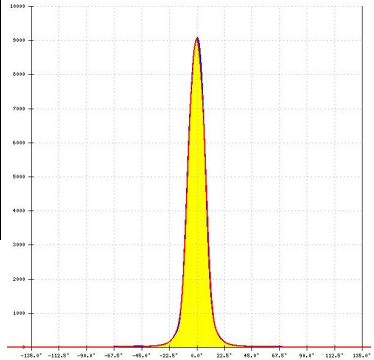

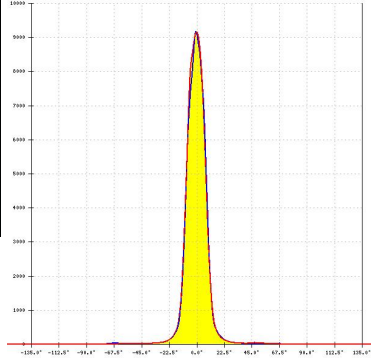
Component		Qty in box	MOQ	MPQ	Box weight (kg)
C16193_GABRIELLA-MIDI-S » Box size: 476 x 273 x 292 mm	Single lens	500	100	50	9.3
C16192_GABRIELLA-MIDI-HLD » Box size: 476 x 273 x 292 mm	Holder	500	100	50	3.6





See also our general installation guide: www.ledil.com/installation_guide

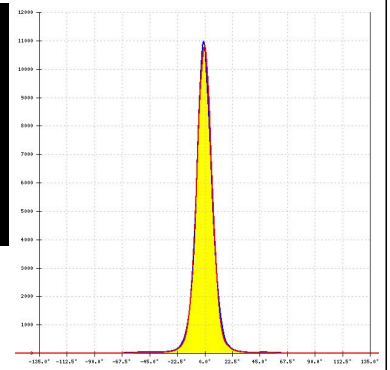
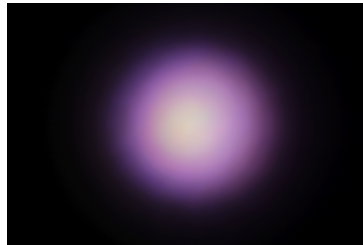
PHOTOMETRIC DATA (MEASURED):

<p>CREE LED</p> <p>LED XQ-E HD FWHM / FWTM 13.0° / 22.0° Efficiency 87 % Peak intensity 13.8 cd/lm LEDs/each optic 4 Light colour RGBW Required components:</p>		
<p>LUMILEDS</p> <p>LED LUXEON 5050 Round LES FWHM / FWTM 14.0° / 26.0° Efficiency 91 % Peak intensity 11.5 cd/lm LEDs/each optic 1 Light colour White Required components:</p>		
<p>LUMILEDS</p> <p>LED LUXEON C FWHM / FWTM 16.0° / 27.0° Efficiency 86 % Peak intensity 9.1 cd/lm LEDs/each optic 4 Light colour RGBW Required components:</p>		
<p>LUMILEDS</p> <p>LED LUXEON CZ FWHM / FWTM 17.0° / 27.0° Efficiency 89 % Peak intensity 9.2 cd/lm LEDs/each optic 4 Light colour RGBW Required components:</p>		

PHOTOMETRIC DATA (MEASURED):

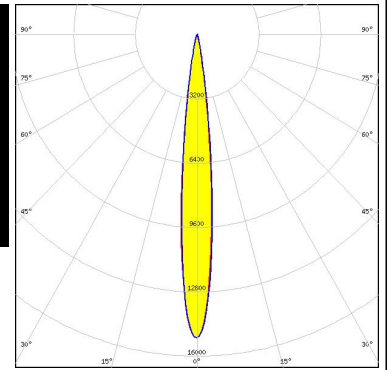
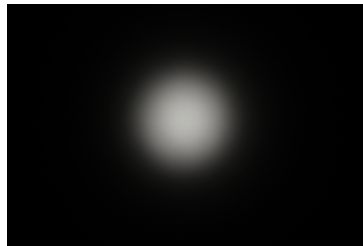
LUMILEDS

LED LUXEON MultiColor Module 2.5W
 FWHM / FWTM 13.0° / 27.0°
 Efficiency 89 %
 Peak intensity 11 cd/lm
 LEDs/each optic 1
 Light colour RGBW
 Required components:



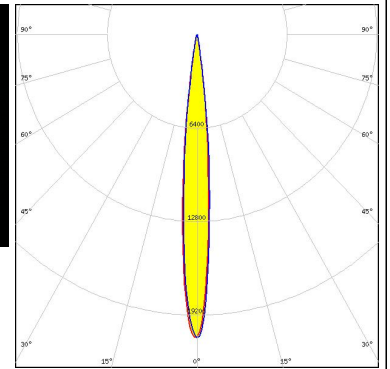
LUMILEDS

LED LUXEON V
 FWHM / FWTM 12.0° / 22.0°
 Efficiency 89 %
 Peak intensity 15.1 cd/lm
 LEDs/each optic 1
 Light colour White
 Required components:



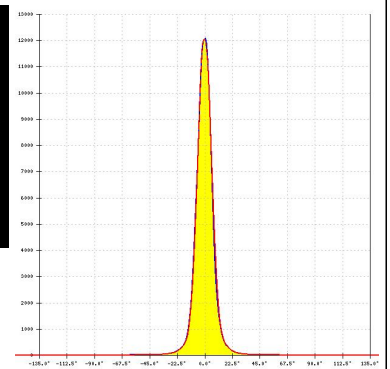
LUMINUS

LED SBM-40-RGBW
 FWHM / FWTM 10.0° / 19.0°
 Efficiency 89 %
 Peak intensity 21 cd/lm
 LEDs/each optic 1
 Light colour White
 Required components:

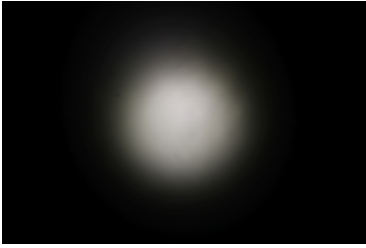
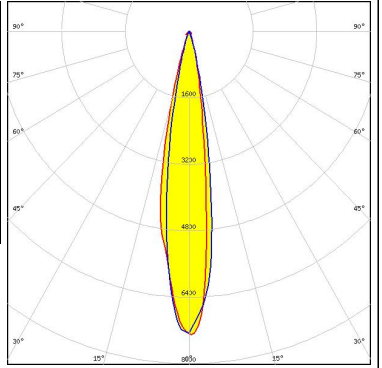
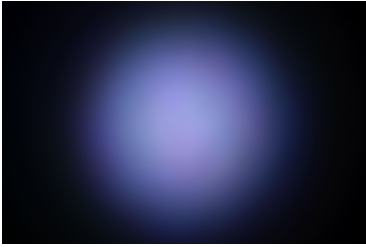
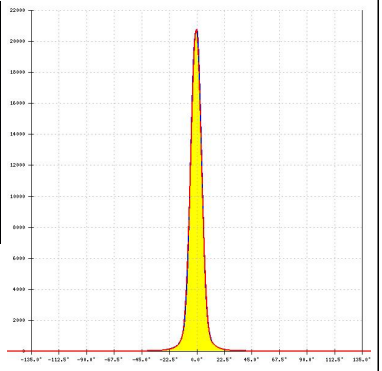

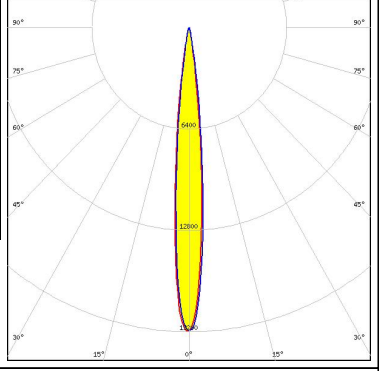

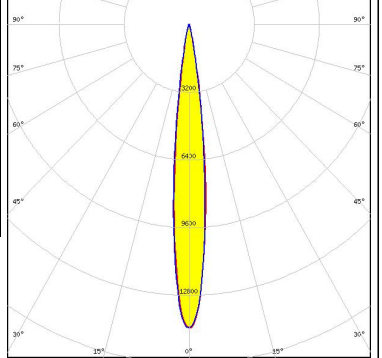


NICHIA

LED NCSxE17A
 FWHM / FWTM 13.0° / 25.0°
 Efficiency 92 %
 Peak intensity 12 cd/lm
 LEDs/each optic 4
 Light colour RGBW
 Required components:



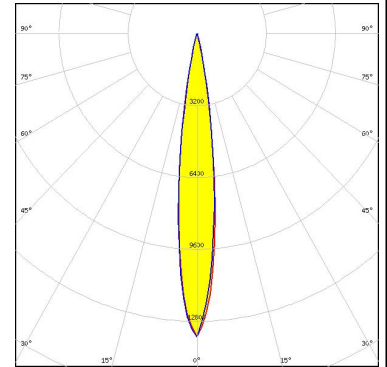
PHOTOMETRIC DATA (MEASURED):

<p>NICHIA</p> <p>LED NVSW219F FWHM / FWTM 17.0° / 31.0° Efficiency 87 % Peak intensity 7.3 cd/lm LEDs/each optic 1 Light colour White Required components:</p>		
<p>SEOUL SEMICONDUCTOR</p> <p>LED SPF05F0A FWHM / FWTM 10.0° / 19.0° Efficiency 89 % Peak intensity 20.8 cd/lm LEDs/each optic 4 Light colour RGBW Required components:</p>		
<p>SEOUL SEMICONDUCTOR</p> <p>LED SPF05F0B FWHM / FWTM 11.0° / 20.0° Efficiency 90 % Peak intensity 19.1 cd/lm LEDs/each optic 4 Light colour RGBW Required components:</p>		
<p>SEOUL SEMICONDUCTOR</p> <p>LED SPF05F0C FWHM / FWTM 12.0° / 22.0° Efficiency 89 % Peak intensity 14.3 cd/lm LEDs/each optic 4 Light colour RGBW Required components:</p>		

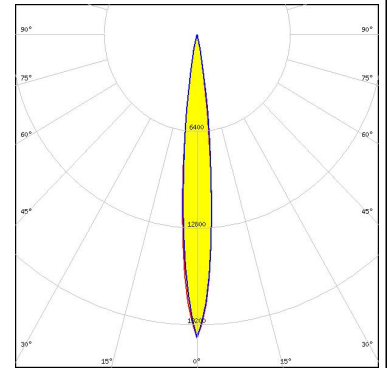
PHOTOMETRIC DATA (SIMULATED):



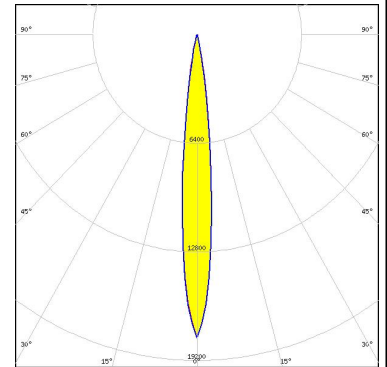
LED XM-L RGBW (XMLDCL HD)
 FWHM / FWTM 14.0° / 25.0°
 Efficiency 93 %
 Peak intensity 13.5 cd/lm
 LEDs/each optic 1
 Light colour RGBW
 Required components:



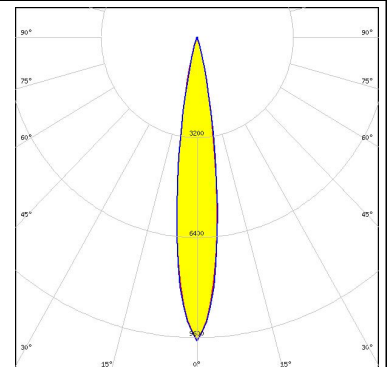
LED XM-L RGBW (XMLDCL HI)
 FWHM / FWTM 12.0 + 11.0° / 20.0 + 21.0°
 Efficiency 94 %
 Peak intensity 20.1 cd/lm
 LEDs/each optic 1
 Light colour RGBW
 Required components:



LED XP-G2 HE
 FWHM / FWTM 12.0° / 22.0°
 Efficiency 92 %
 Peak intensity 17.9 cd/lm
 LEDs/each optic 1
 Light colour White
 Required components:



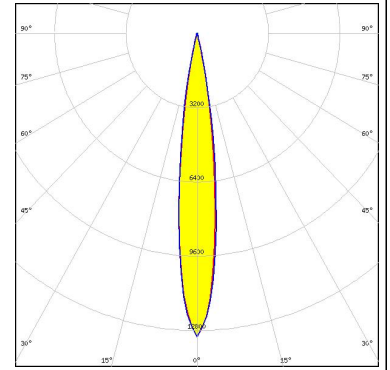
LED NV4x144A
 FWHM / FWTM 16.0° / 28.0°
 Efficiency 89 %
 Peak intensity 9.7 cd/lm
 LEDs/each optic 1
 Light colour White
 Required components:



PHOTOMETRIC DATA (SIMULATED):

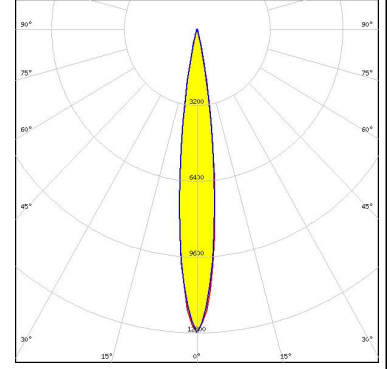
OSRAM Opto Semiconductors

LED DURIS E 5050 RGBW
 FWHM / FWTM 14.0° / 24.0 + 26.0°
 Efficiency 93 %
 Peak intensity 13.1 cd/lm
 LEDs/each optic 1
 Light colour RGBW
 Required components:



OSRAM Opto Semiconductors

LED Duris S8
 FWHM / FWTM 14.0° / 25.0°
 Efficiency 92 %
 Peak intensity 12.8 cd/lm
 LEDs/each optic 1
 Light colour White
 Required components:



OSRAM Opto Semiconductors

LED SFH 4717AS
 FWHM / FWTM 11.0° / 21.0°
 Efficiency 91 %
 LEDs/each optic 1
 Light colour IR
 Required components:

