

GABRIELLA-MIDI-W

~35° wide beam with holder

TECHNICAL SPECIFICATIONS:

Dimensions	Ø 37.5 mm
Height	24.2 mm
Fastening	pin, screw
ROHS compliant	yes ⓘ

MATERIAL SPECIFICATIONS:

Component	Type	Material	Colour	Finish
C16195_GABRIELLA-MIDI-W	Single lens	PMMA	clear	
C16192_GABRIELLA-MIDI-HLD	Holder	PC	black	

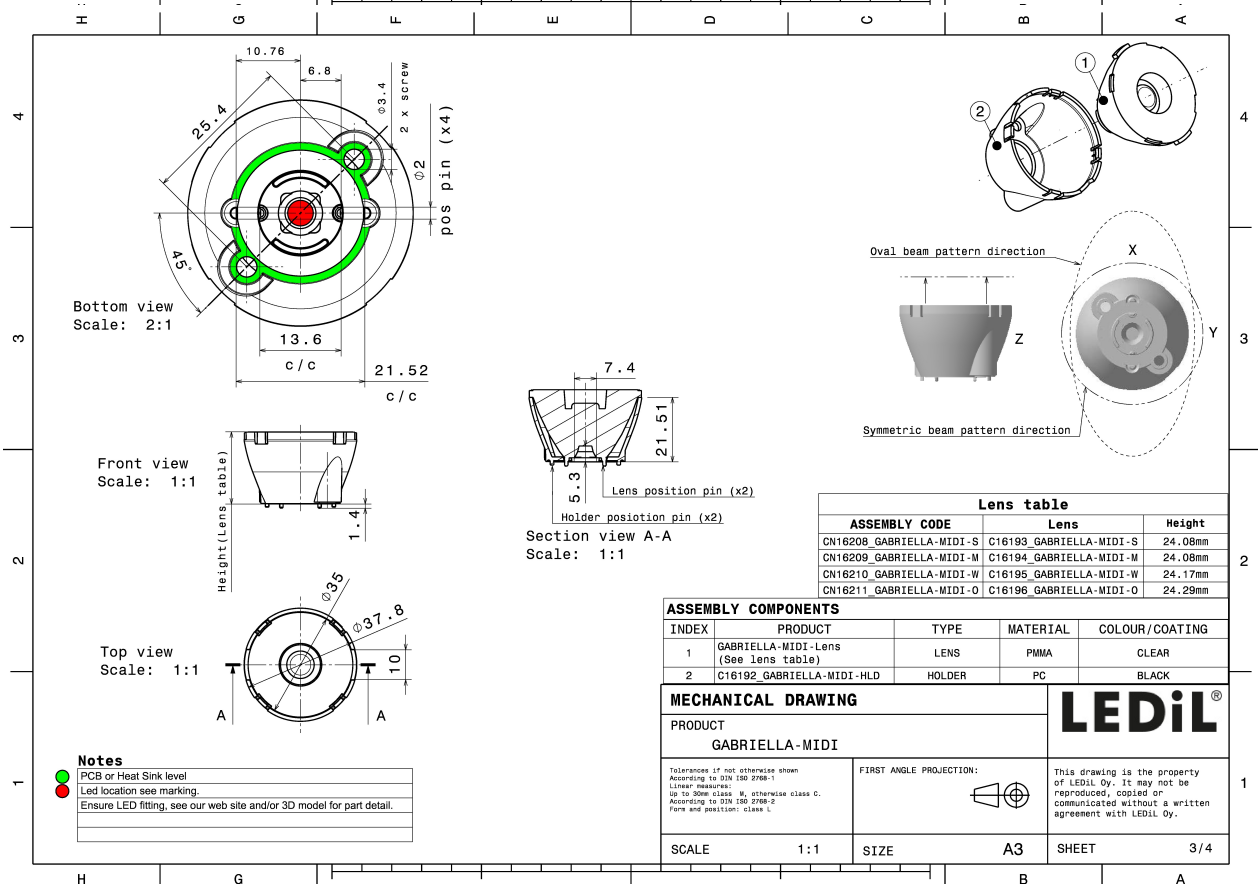
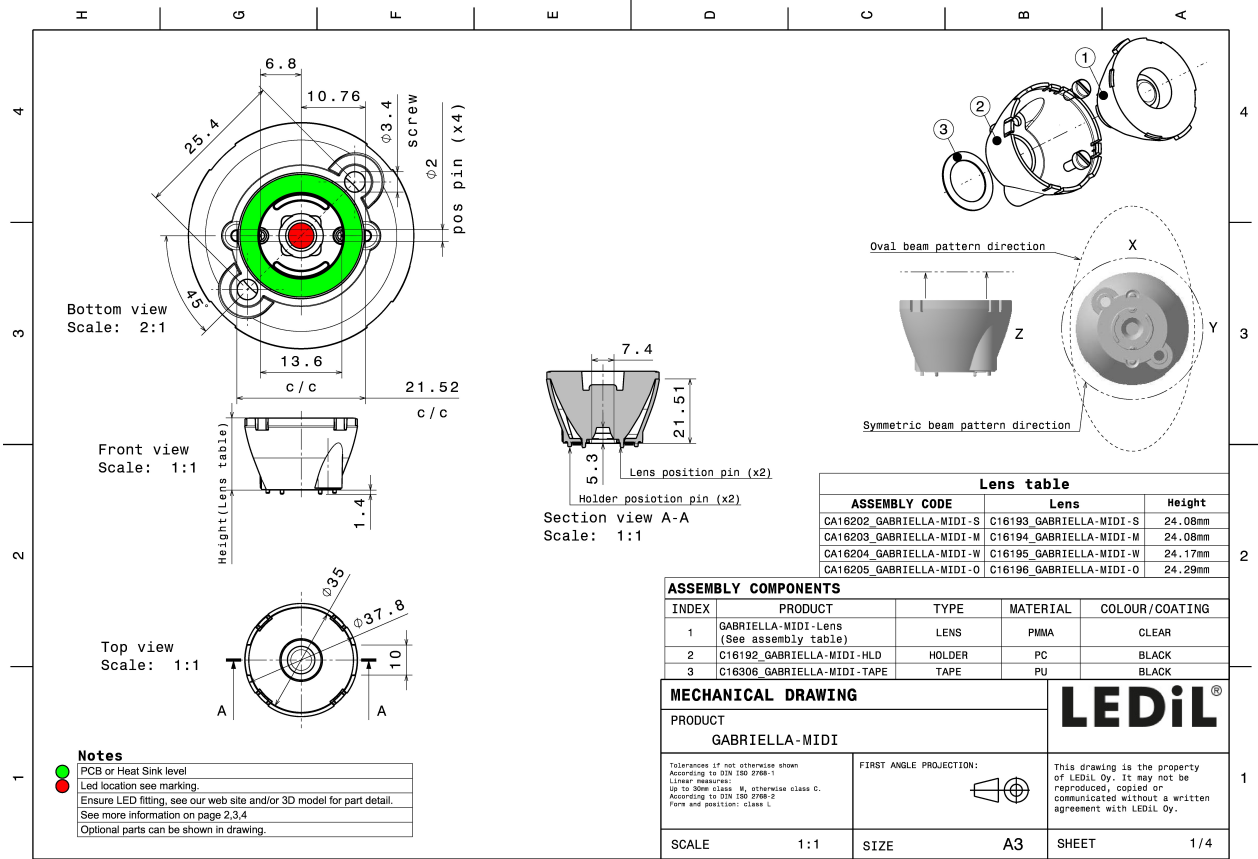
ORDERING INFORMATION:

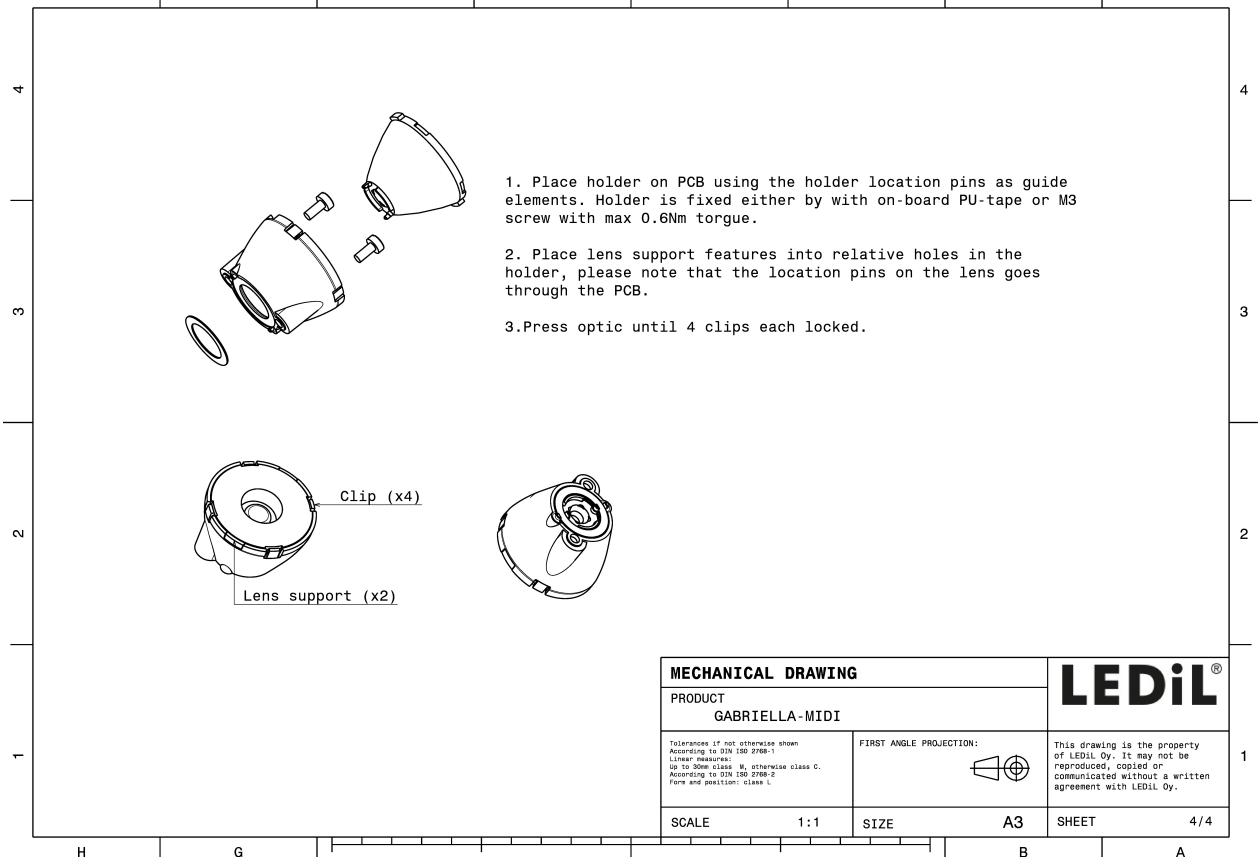
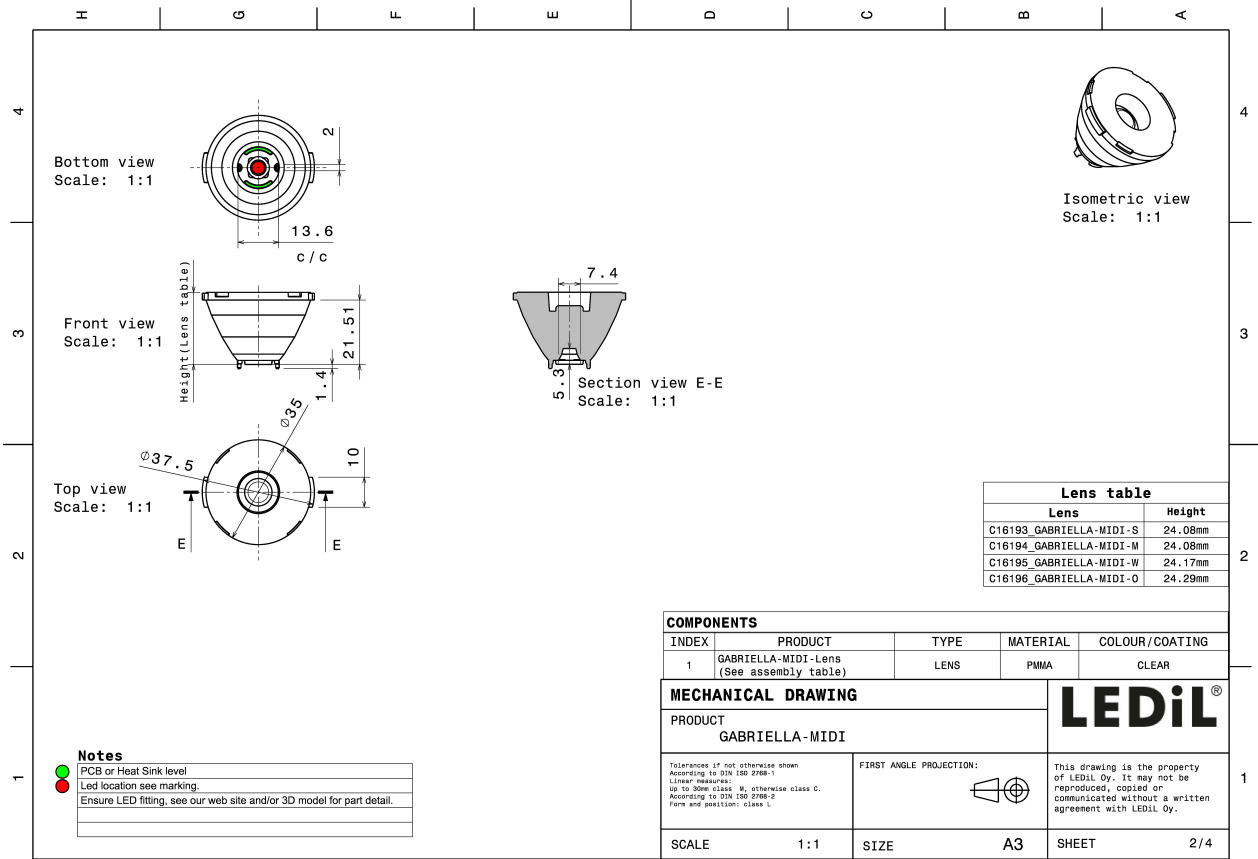
Quantities for one set:

Single lens	1
Holder	1



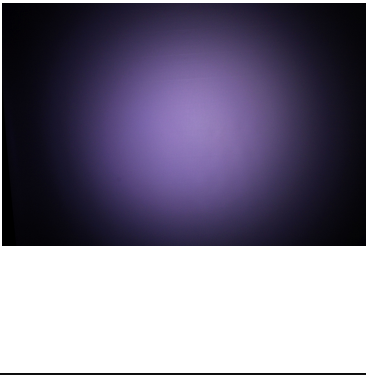
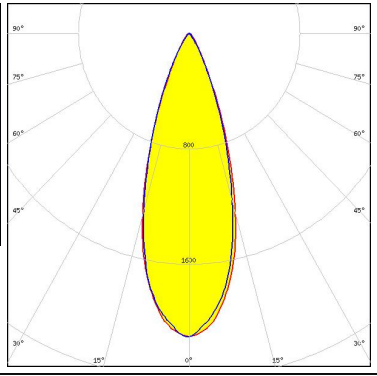

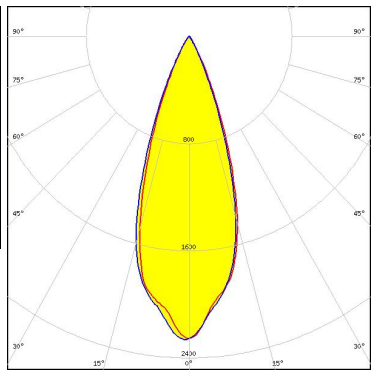

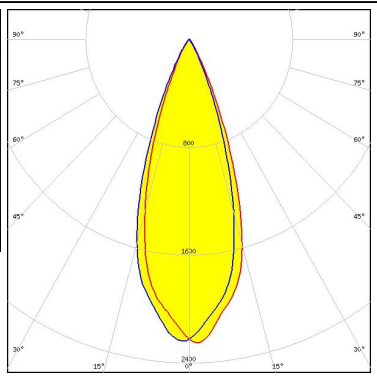

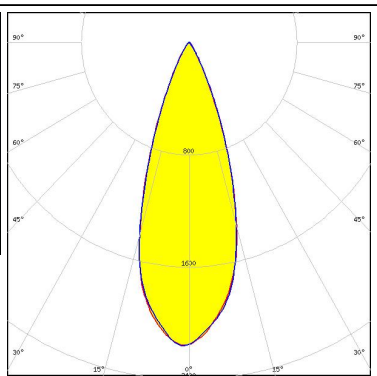
Component		Qty in box	MOQ	MPQ	Box weight (kg)
C16195_GABRIELLA-MIDI-W » Box size: 476 x 273 x 292 mm	Single lens	500	100	50	9.1
C16192_GABRIELLA-MIDI-HLD » Box size: 476 x 273 x 292 mm	Holder	500	100	50	3.6




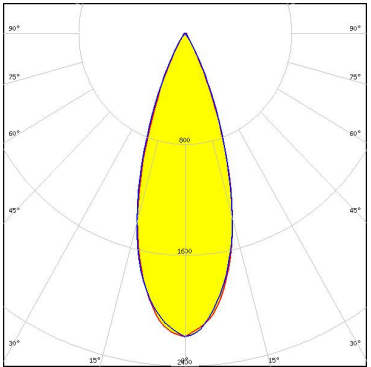

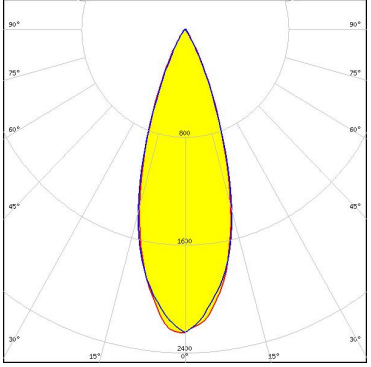

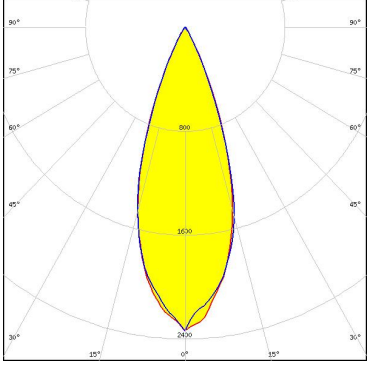

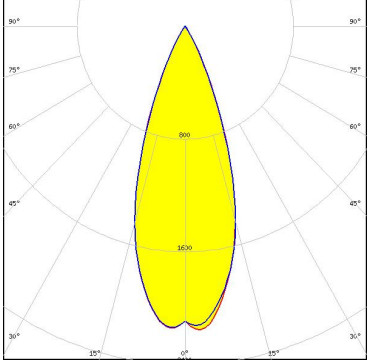


See also our general installation guide: www.ledil.com/installation_guide

PHOTOMETRIC DATA (MEASURED):

<p>LUMILEDS</p> <p>LED LUXEON MultiColor Module 2.5W</p> <p>FWHM / FWTM 34.0° / 59.0°</p> <p>Efficiency 82 %</p> <p>Peak intensity 2.1 cd/m</p> <p>LEDs/each optic 1</p> <p>Light colour RGBW</p> <p>Required components:</p>		
<p>SEOUL SEMICONDUCTOR</p> <p>LED SPF05F0A</p> <p>FWHM / FWTM 36.0° / 57.0°</p> <p>Efficiency 85 %</p> <p>Peak intensity 2.3 cd/m</p> <p>LEDs/each optic 4</p> <p>Light colour RGBW</p> <p>Required components:</p>		
<p>SEOUL SEMICONDUCTOR</p> <p>LED SPF05F0B</p> <p>FWHM / FWTM 36.0° / 57.0°</p> <p>Efficiency 86 %</p> <p>Peak intensity 2.3 cd/m</p> <p>LEDs/each optic 4</p> <p>Light colour RGBW</p> <p>Required components:</p>		
<p>SEOUL SEMICONDUCTOR</p> <p>LED SPF05F0C</p> <p>FWHM / FWTM 36.0° / 58.0°</p> <p>Efficiency 85 %</p> <p>Peak intensity 2.2 cd/m</p> <p>LEDs/each optic 1</p> <p>Light colour White</p> <p>Required components:</p>		

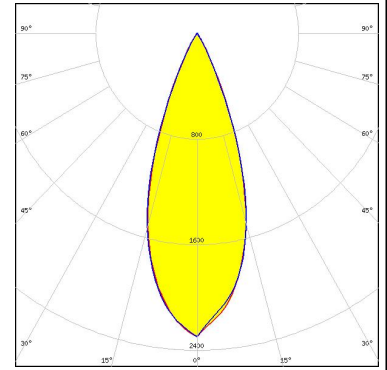
PHOTOMETRIC DATA (SIMULATED):

	<p>LED XM-L RGBW (XMLCTW) FWHM / FWTM 36.0° / 58.0° Efficiency 85 % Peak intensity 2.2 cd/lm LEDs/each optic 1 Light colour White Required components:</p>	
	<p>LED XM-L RGBW (XMLDCL HD) FWHM / FWTM 34.0 + 35.0° / 58.0° Efficiency 85 % Peak intensity 2.3 cd/lm LEDs/each optic 1 Light colour RGBW Required components:</p>	
	<p>LED XM-L RGBW (XMLDCL HI) FWHM / FWTM 36.0° / 56.0° Efficiency 87 % Peak intensity 2.3 cd/lm LEDs/each optic 1 Light colour RGBW Required components:</p>	
	<p>LED XM-L2 FWHM / FWTM 37.0° / 58.0° Efficiency 85 % Peak intensity 2.2 cd/lm LEDs/each optic 1 Light colour White Required components:</p>	

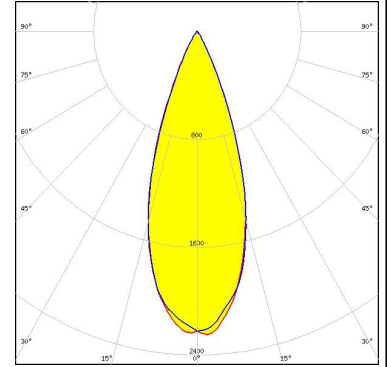
PHOTOMETRIC DATA (SIMULATED):



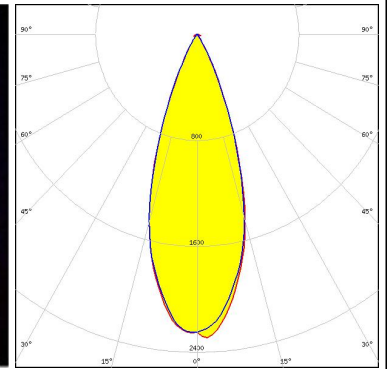
LED XP-G2
 FWHM / FWTM 37.0° / 57.0°
 Efficiency 86 %
 Peak intensity 2.3 cd/lm
 LEDs/each optic 1
 Light colour White
 Required components:



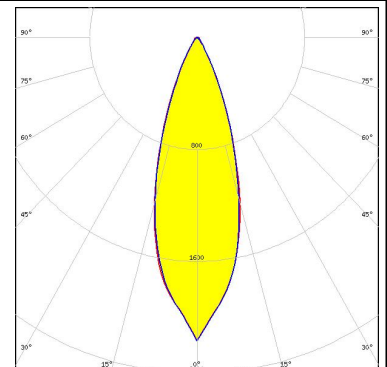
LED XP-G2 HE
 FWHM / FWTM 36.0° / 57.0°
 Efficiency 85 %
 Peak intensity 2.3 cd/lm
 LEDs/each optic 1
 Light colour White
 Required components:



LED LZ7 Plus (LZ7-04M2PD)
 FWHM / FWTM 36.0° / 57.0°
 Efficiency 87 %
 Peak intensity 2.3 cd/lm
 LEDs/each optic 1
 Light colour White
 Required components:



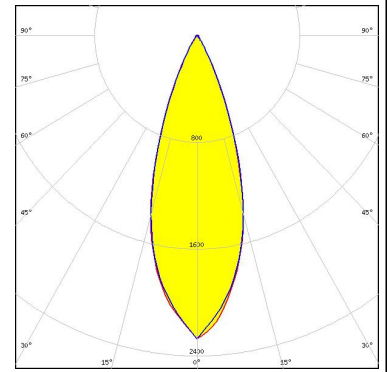
LED LUXEON M/MX
 FWHM / FWTM 33.0° / 59.0°
 Efficiency 82 %
 Peak intensity 2.2 cd/lm
 LEDs/each optic 1
 Light colour White
 Required components:



PHOTOMETRIC DATA (SIMULATED):

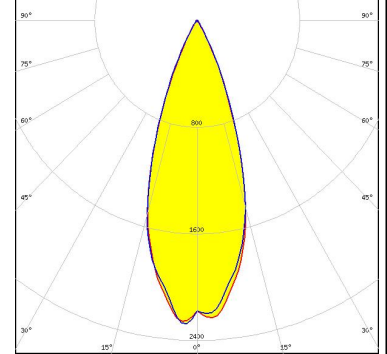
LUMILEDS

LED LUXEON MZ
 FWHM / FWTM 35.0° / 57.0°
 Efficiency 85 %
 Peak intensity 2.3 cd/lm
 LEDs/each optic 1
 Light colour White
 Required components:



LUMILEDS

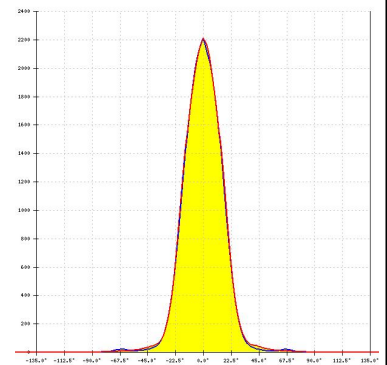
LED LUXEON Rubix
 FWHM / FWTM 36.0° / 56.0 + 57.0°
 Efficiency 87 %
 Peak intensity 2.3 cd/lm
 LEDs/each optic 4
 Light colour RGBW
 Required components:



OSRAM

Opto Semiconductors

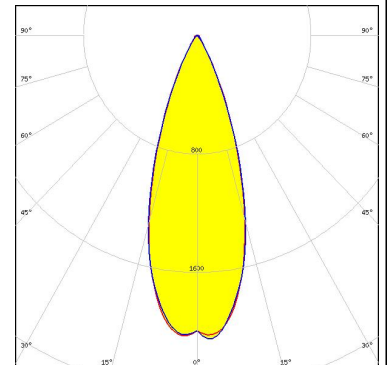
LED DURIS E 5050 RGBW
 FWHM / FWTM 35.0° / 58.0°
 Efficiency 86 %
 Peak intensity 2.2 cd/lm
 LEDs/each optic 1
 Light colour RGBW
 Required components:



OSRAM

Opto Semiconductors

LED Duris S8
 FWHM / FWTM 36.0° / 59.0°
 Efficiency 84 %
 Peak intensity 2.1 cd/lm
 LEDs/each optic 1
 Light colour White
 Required components:



PHOTOMETRIC DATA (SIMULATED):

<p>OSRAM Opto Semiconductors</p> <p>LED: OSLON Square EC</p> <p>FWHM / FWTM: 36.0° / 56.0°</p> <p>Efficiency: 85 %</p> <p>Peak intensity: 2.5 cd/lm</p> <p>LEDs/each optic: 1</p> <p>Light colour: White</p> <p>Required components:</p>		
<p>OSRAM Opto Semiconductors</p> <p>LED: OSTAR Stage (S2WP)</p> <p>FWHM / FWTM: 35.0° / 58.0°</p> <p>Efficiency: 84 %</p> <p>Peak intensity: 2.2 cd/lm</p> <p>LEDs/each optic: 1</p> <p>Light colour: White</p> <p>Required components:</p>		
<p>OSRAM Opto Semiconductors</p> <p>LED: SFH 4717AS</p> <p>FWHM / FWTM: 36.0° / 56.0°</p> <p>Efficiency: 83 %</p> <p>LEDs/each optic: 1</p> <p>Light colour: IR</p> <p>Required components:</p>	<p>Polar intensity graph</p>	