

## HB-SQ-WWW

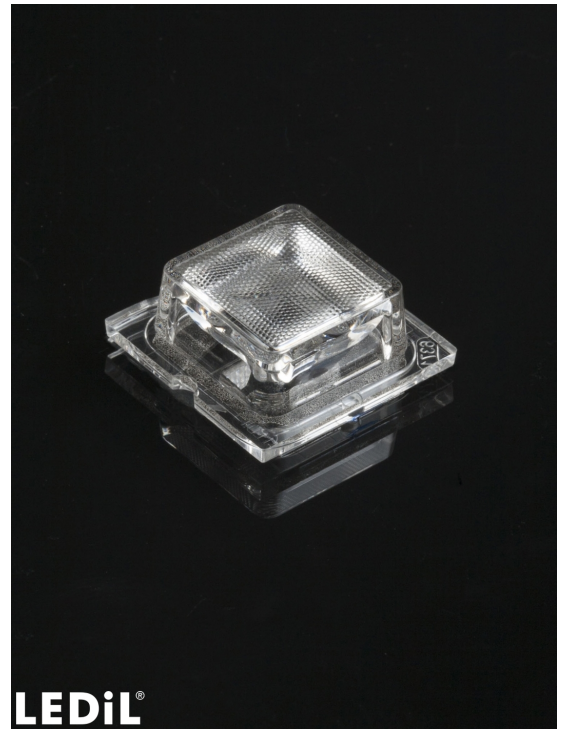
~90° beam

### SPECIFICATION:

Dimensions	25.0 x 25.0 mm
Height	9.8 mm
Fastening	glue, pin, screw
ROHS compliant	yes ⓘ

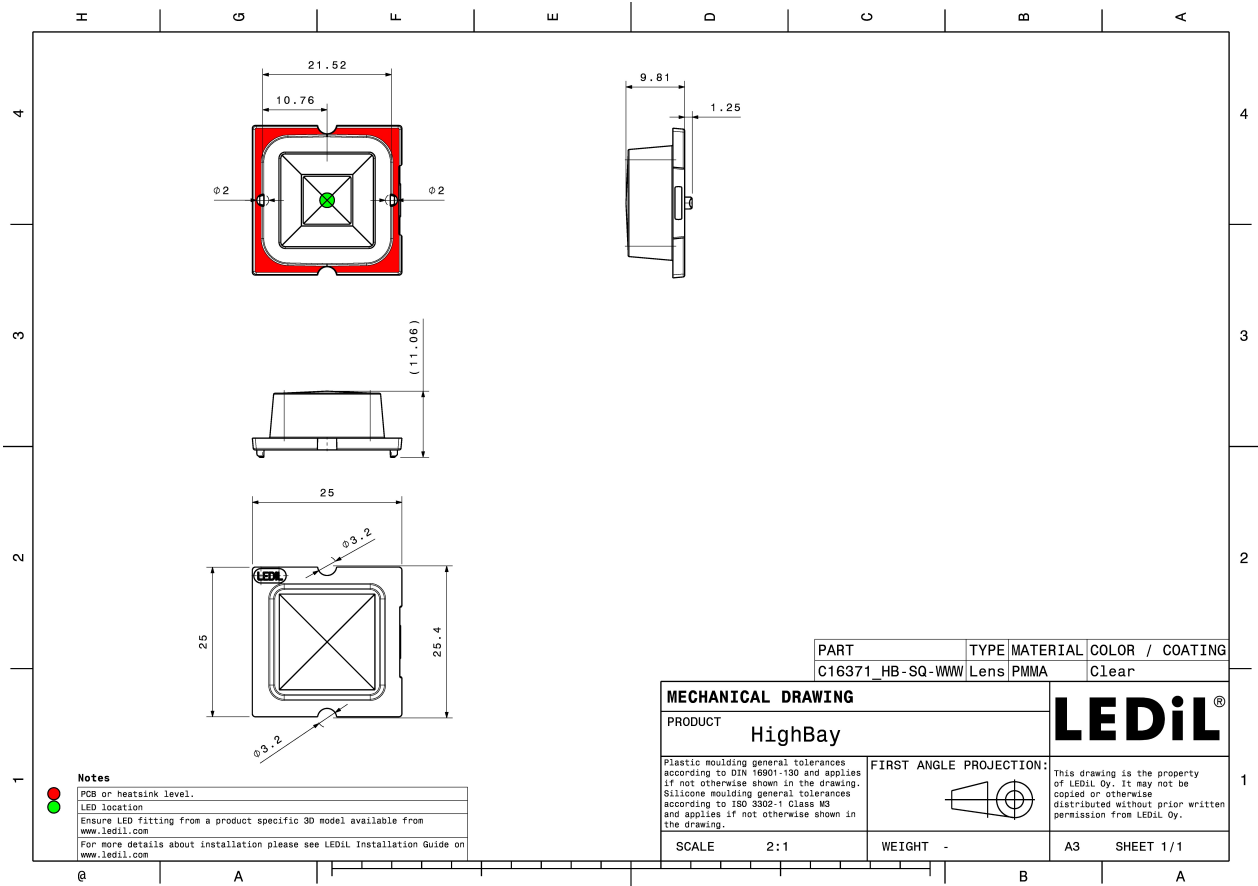
### MATERIALS:

Component	Type	Material	Colour	Finish
HB-SQ-WWW	Single lens	PMMA	clear	



### ORDERING INFORMATION:

Component	Qty in box	MOQ	MPQ	Box weight (kg)
C16371_HB-SQ-WWW » Box size: 480 x 280 x 300 mm	2058	294	98	8.6



See also our general installation guide: [www.ledil.com/installation\\_guide](http://www.ledil.com/installation_guide)

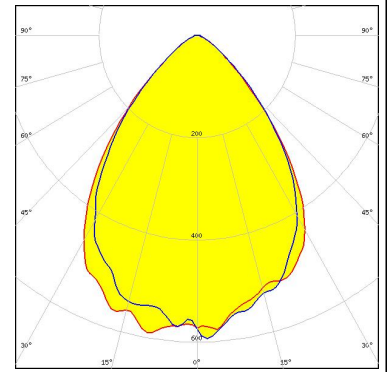
#### OPTICAL RESULTS (SIMULATED):

<p><b>CREE</b> LEDs</p> <p>LED J Series 2835            FWHM / FWTM 78.0° / 104.0°            Efficiency 94 %            Peak intensity 0.7 cd/lm            LEDs/each optic 1            Light colour White            Required components:</p>	
<p><b>CREE</b> LEDs</p> <p>LED XHP50.2            FWHM / FWTM 90.0° / 122.0°            Efficiency 94 %            Peak intensity 0.4 cd/lm            LEDs/each optic 1            Light colour White            Required components:</p>	
<p><b>CREE</b> LEDs</p> <p>LED XHP70            FWHM / FWTM 84.0° / 117.0°            Efficiency 88 %            Peak intensity 0.5 cd/lm            LEDs/each optic 1            Light colour White            Required components:</p>	
<p><b>CREE</b> LEDs</p> <p>LED XHP70.2            FWHM / FWTM 86.0° / 120.0 + 122.0°            Efficiency 85 %            Peak intensity 0.4 cd/lm            LEDs/each optic 1            Light colour White            Required components:</p>	

#### OPTICAL RESULTS (SIMULATED):

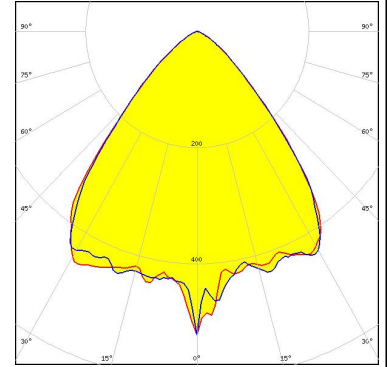
##### LUMILEDS

LED LUXEON 7070  
 FWHM / FWTM 77.0° / 112.0°  
 Efficiency 95 %  
 Peak intensity 0.6 cd/lm  
 LEDs/each optic 1  
 Light colour White  
 Required components:



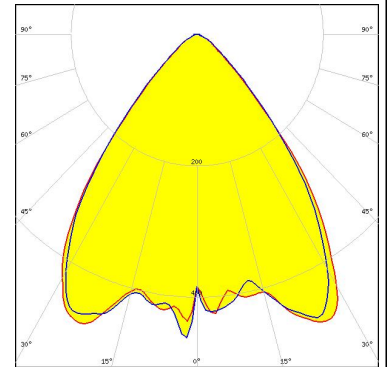
##### LUMILEDS

LED LUXEON M/MX  
 FWHM / FWTM 80.0° / 110.0°  
 Efficiency 89 %  
 Peak intensity 0.5 cd/lm  
 LEDs/each optic 1  
 Light colour White  
 Required components:



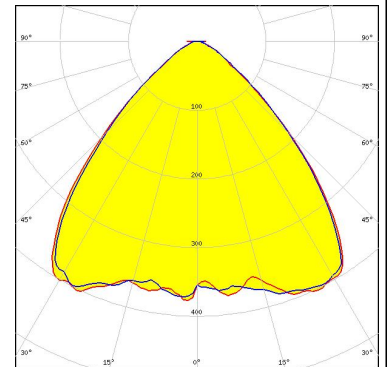
##### LUMILEDS

LED LUXEON MZ  
 FWHM / FWTM 79.0° / 105.0°  
 Efficiency 94 %  
 Peak intensity 0.6 cd/lm  
 LEDs/each optic 1  
 Light colour White  
 Required components:



##### NICHIA

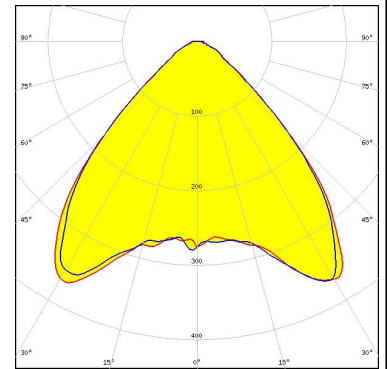
LED NV4x144A  
 FWHM / FWTM 89.0° / 120.0°  
 Efficiency 94 %  
 Peak intensity 0.4 cd/lm  
 LEDs/each optic 1  
 Light colour White  
 Required components:



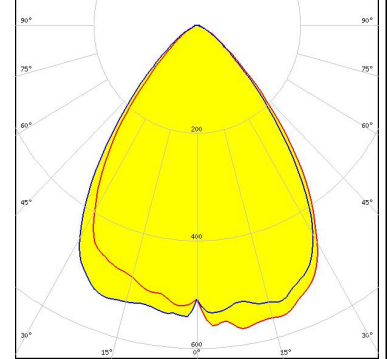
### OPTICAL RESULTS (SIMULATED):



LED NVSW519A  
 FWHM / FWTM 89.0° / 120.0°  
 Efficiency 93 %  
 Peak intensity 0.5 cd/lm  
 LEDs/each optic 1  
 Light colour White  
 Required components:



LED Duris S10  
 FWHM / FWTM 77.0° / 109.0°  
 Efficiency 94 %  
 Peak intensity 0.6 cd/lm  
 LEDs/each optic 1  
 Light colour White  
 Required components:



LED OSCONIQ P 7070  
 FWHM / FWTM 76.0° / 105.0°  
 Efficiency 91 %  
 Peak intensity 0.6 cd/lm  
 LEDs/each optic 1  
 Light colour White  
 Required components:

