

SITARA-T2

IESNA Type II (medium) beam, applicable for European P-class standard pedestrian lighting and M-class roads.

TECHNICAL SPECIFICATIONS:

Dimensions	18.0 x 18.0 mm
Height	7.7 mm
Fastening	glue, pin
ROHS compliant	yes ⓘ

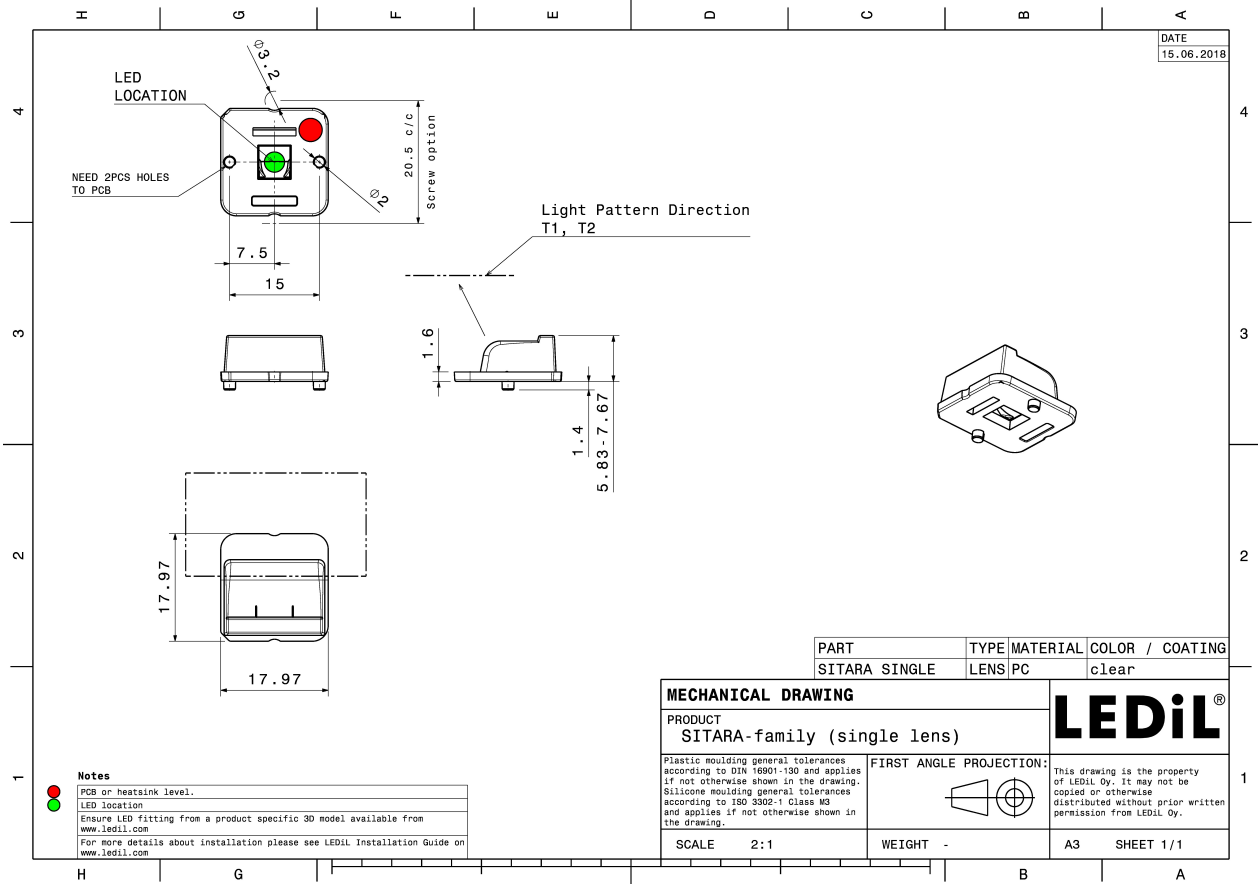


MATERIAL SPECIFICATIONS:

Component	Type	Material	Colour	Finish
SITARA-T2	Single lens	PC	clear	

ORDERING INFORMATION:

Component	Qty in box	MOQ	MPQ	Box weight (kg)
C16374_SITARA-T2 » Box size: 400 x 300 x 300 mm	8000	2000	2000	12.1

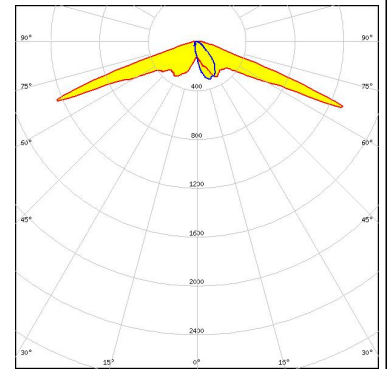


See also our general installation guide: www.ledil.com/installation_guide

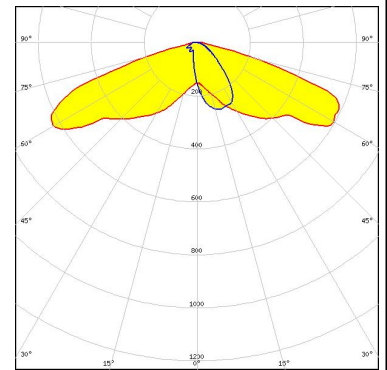
PHOTOMETRIC DATA (MEASURED):



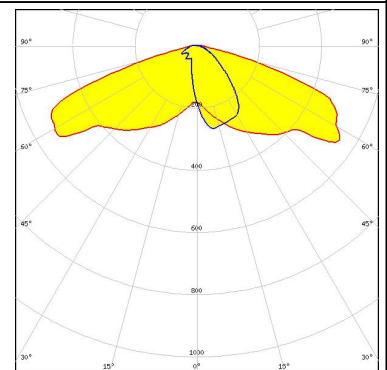
LED XP-E2
 FWHM / FWTM Asymmetric
 Efficiency 90 %
 Peak intensity 2.5 cd/lm
 LEDs/each optic 1
 Light colour White
 Required components:



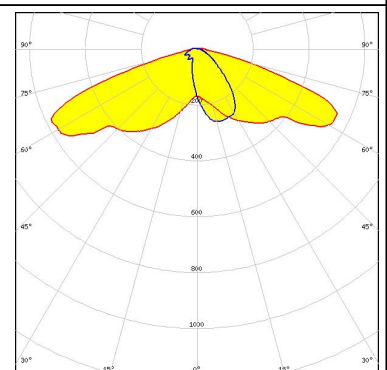
LED LUXEON 5050 Round LES
 FWHM / FWTM Asymmetric
 Efficiency 88 %
 Peak intensity 0.6 cd/lm
 LEDs/each optic 1
 Light colour White
 Required components:



LED Duris S8
 FWHM / FWTM Asymmetric
 Efficiency 90 %
 Peak intensity 0.6 cd/lm
 LEDs/each optic 1
 Light colour White
 Required components:



LED LH508A
 FWHM / FWTM Asymmetric
 Efficiency 89 %
 Peak intensity 0.6 cd/lm
 LEDs/each optic 1
 Light colour White
 Required components:



PHOTOMETRIC DATA (SIMULATED):

<p>CREE LED</p> <p>LED: MHB-A/B FWHM / FWTM: Asymmetric Efficiency: 80 % LEDs/each optic: 1 Light colour: White Required components:</p>	
<p>OSRAM Opto Semiconductors</p> <p>LED: Duris S8 FWHM / FWTM: Asymmetric Efficiency: 77 % Peak intensity: 0.5 cd/lm LEDs/each optic: 1 Light colour: White Required components:</p> <p>Protective plate, glass</p>	
<p>OSRAM Opto Semiconductors</p> <p>LED: OSCONIQ P 3737 (2W version) FWHM / FWTM: Asymmetric Efficiency: 87 % Peak intensity: 1.4 cd/lm LEDs/each optic: 1 Light colour: White Required components:</p>	
<p>OSRAM Opto Semiconductors</p> <p>LED: OSCONIQ P 3737 (3W version) FWHM / FWTM: Asymmetric Efficiency: 88 % Peak intensity: 0.9 cd/lm LEDs/each optic: 1 Light colour: White Required components:</p>	

PHOTOMETRIC DATA (SIMULATED):

SAMSUNG

LED	LM101B
FWHM / FWTM	Asymmetric
Efficiency	83 %
Peak intensity	0.8 cd/lm
LEDs/each optic	4
Light colour	White
Required components:	

