

## STRADA-2X2-T1-PC

Symmetric IESNA Type I (medium) beam for narrow roads and paths with long pole distance and tilted armature. Variant made from PC.

### TECHNICAL SPECIFICATIONS:

Dimensions	50.0 x 50.0 mm
Height	7.8 mm
Fastening	pin, screw
ROHS compliant	yes ⓘ

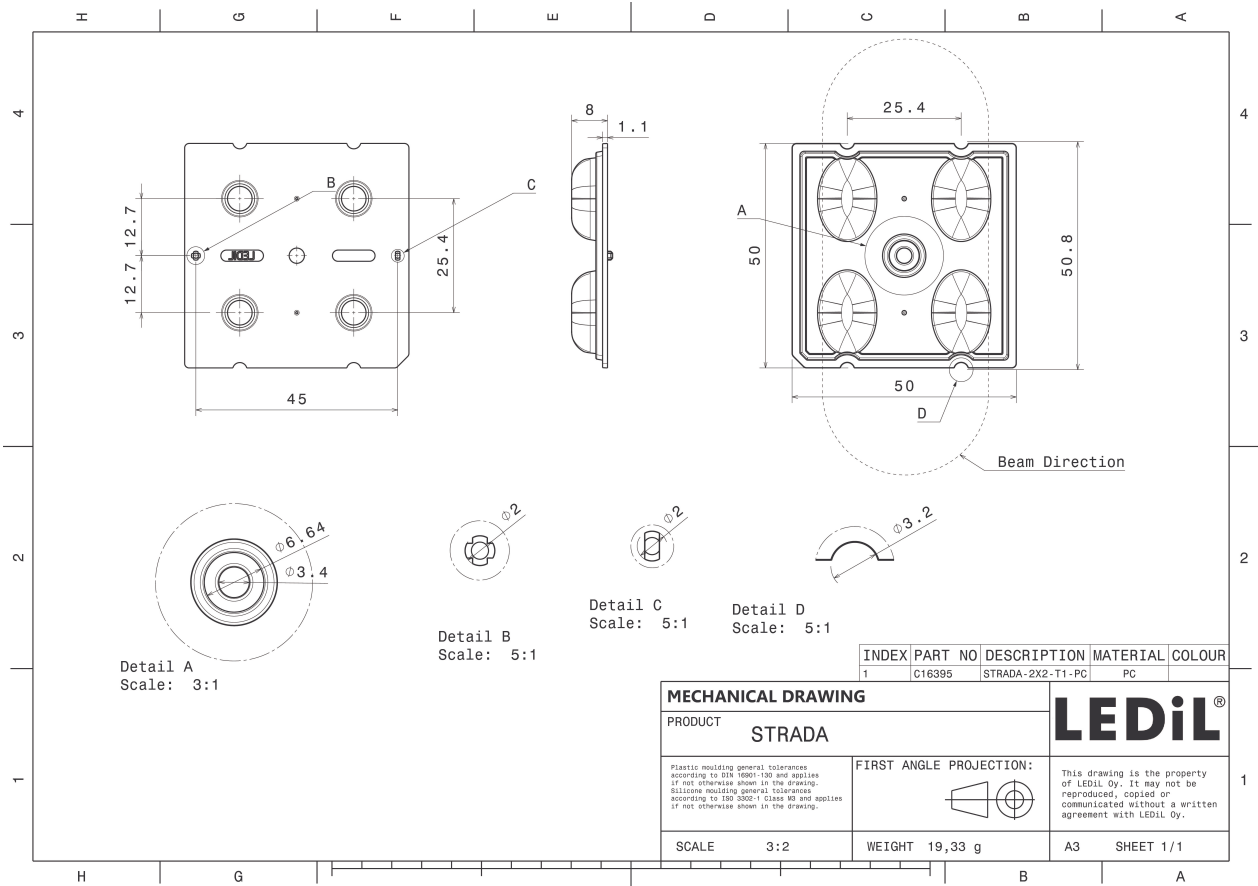
### MATERIAL SPECIFICATIONS:

Component	Type	Material	Colour	Finish
STRADA-2X2-T1-PC	Multi-lens	PC	clear	

### ORDERING INFORMATION:

Component	Qty in box	MOQ	MPQ	Box weight (kg)
C16395_STRADA-2X2-T1-PC » Box size: 480 x 280 x 300 mm	800	160	160	6.9



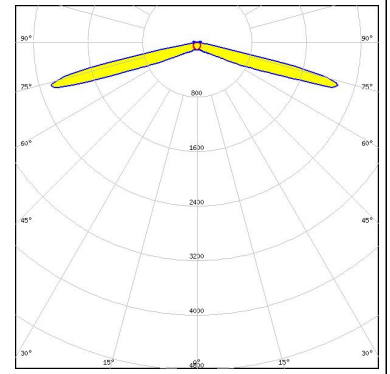


See also our general installation guide: [www.ledil.com/installation\\_guide](http://www.ledil.com/installation_guide)

#### PHOTOMETRIC DATA (MEASURED):



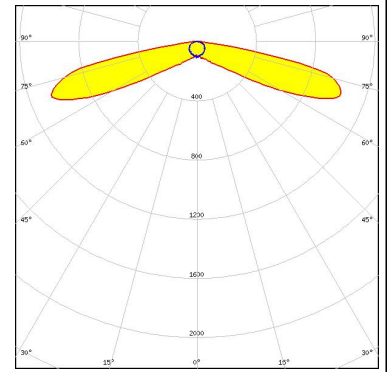
LED XP-G2  
FWHM / FWTM Asymmetric  
Efficiency 92 %  
Peak intensity 2.2 cd/lm  
LEDs/each optic 1  
Light colour White  
Required components:



#### PHOTOMETRIC DATA (SIMULATED):

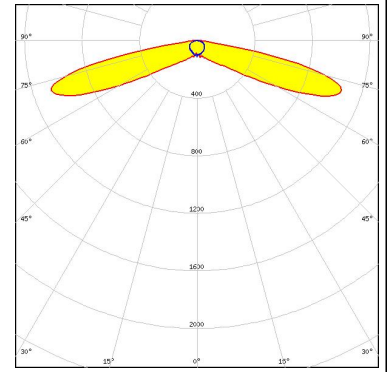
#### LUMILEDS

LED LUXEON 5050 Round LES  
 FWHM / FWTM Asymmetric  
 Efficiency 91 %  
 Peak intensity 1 cd/lm  
 LEDs/each optic 1  
 Light colour White  
 Required components:



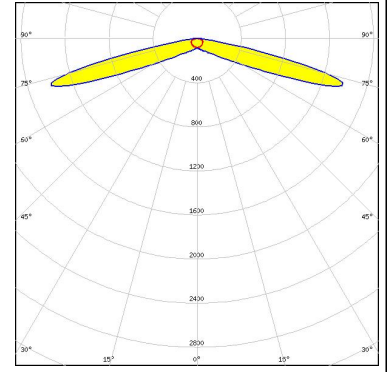
#### LUMILEDS

LED LUXEON 5050 Round LES  
 FWHM / FWTM Asymmetric  
 Efficiency 91 %  
 Peak intensity 1.1 cd/lm  
 LEDs/each optic 1  
 Light colour White  
 Required components:



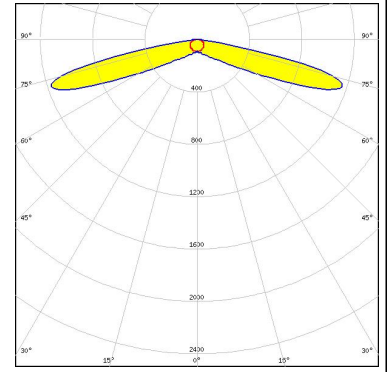
#### NICHIA

LED NF3W585AR  
 FWHM / FWTM Asymmetric  
 Efficiency 89 %  
 Peak intensity 1.4 cd/lm  
 LEDs/each optic 1  
 Light colour White  
 Required components:



#### NICHIA

LED NV4WB35AM  
 FWHM / FWTM Asymmetric  
 Efficiency 90 %  
 Peak intensity 1.2 cd/lm  
 LEDs/each optic 1  
 Light colour White  
 Required components:



#### PHOTOMETRIC DATA (SIMULATED):

**OSRAM**  
Opto Semiconductors

LED	Duris S8
FWHM / FWTM	Asymmetric
Efficiency	80 %
Peak intensity	0.7 cd/lm
LEDs/each optic	1
Light colour	White
Required components:	

Protective plate, glass

