

DAISY-4X1-W-D

~50° wide beam. Variant with diffused lenses.

TECHNICAL SPECIFICATIONS:

| | |
|----------------|---|
| Dimensions | 182.0 x 40.0 mm |
| Height | 20.2 mm |
| Fastening | pin, screw, clips |
| ROHS compliant | yes  |

MATERIAL SPECIFICATIONS:

| Component | Type | Material | Colour | Finish |
|--------------------------------|-------------|----------|--------|--------|
| C16992_DAISY-4X1-W-D | Linear lens | PMMA | milky | |
| C17422_DAISY-4X1-SHD2-MATT | Shade | PC | black | matt |
| C17423_DAISY-4X1-SHD2-WHT-MATT | Shade | PC | white | matt |
| C17528_DAISY-4X1-SHD-MET | Shade | PC | metal | gloss |
| C17535_DAISY-4X1-SHD2-MET-MATT | Shade | PC | metal | matt |
| C16590_DAISY-4X1-SHD | Shade | PC-ABS | black | gloss |
| C16784_DAISY-4X1-SHD-WHT | Shade | PC | white | gloss |

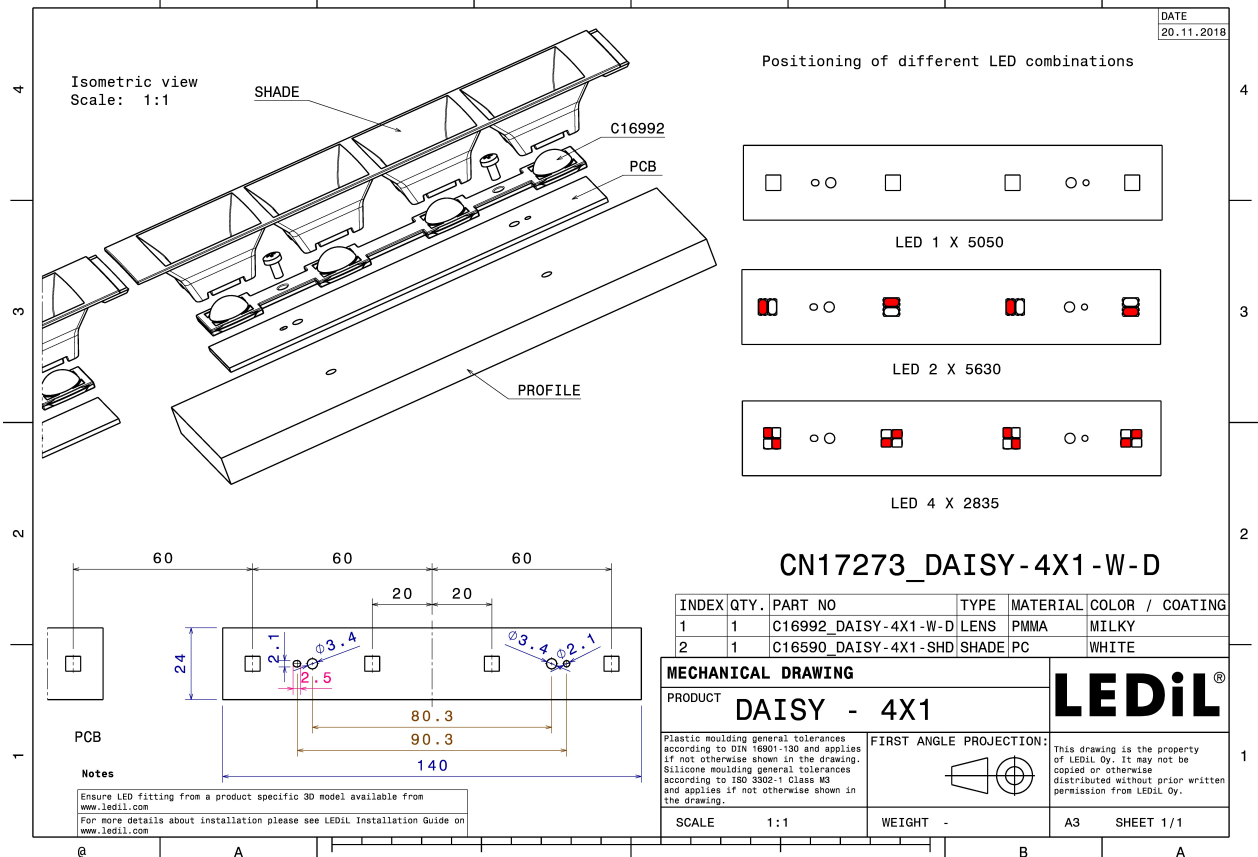
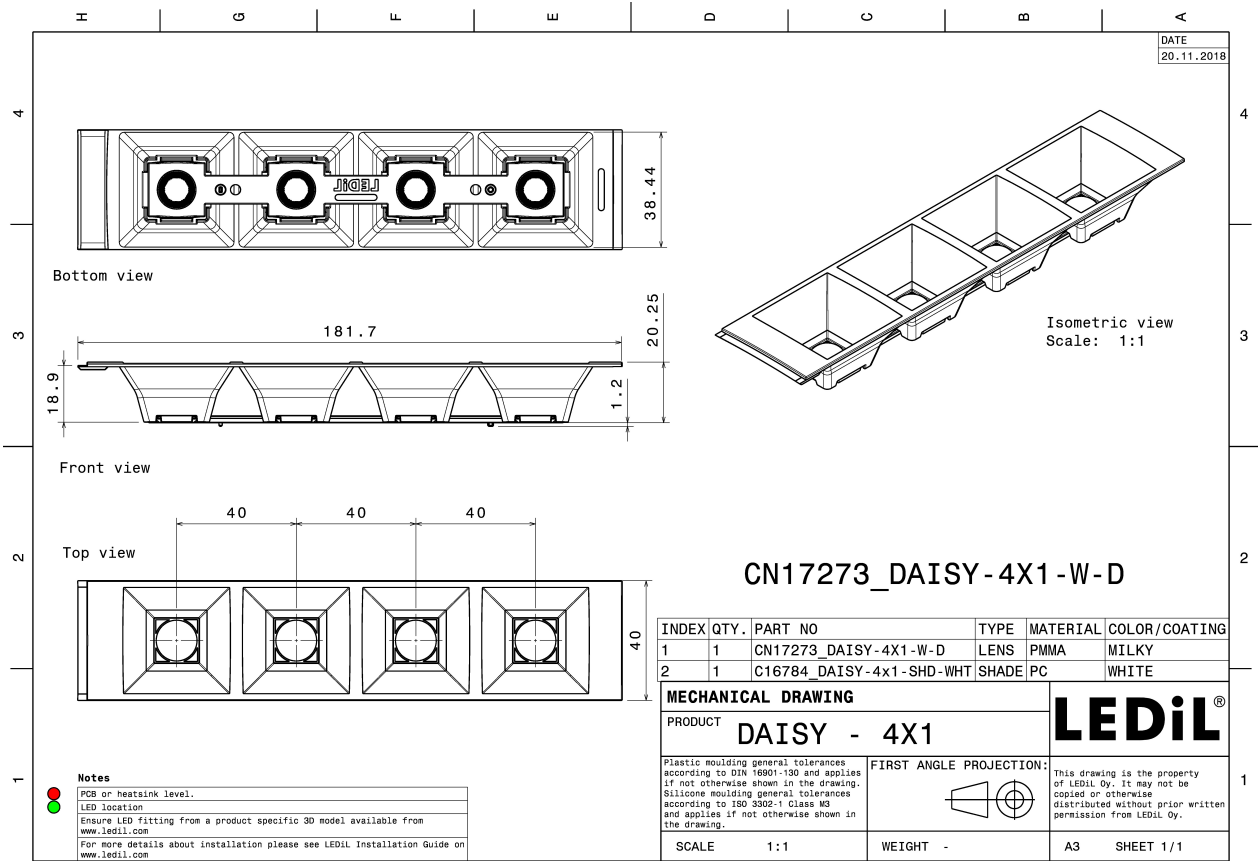
ORDERING INFORMATION:

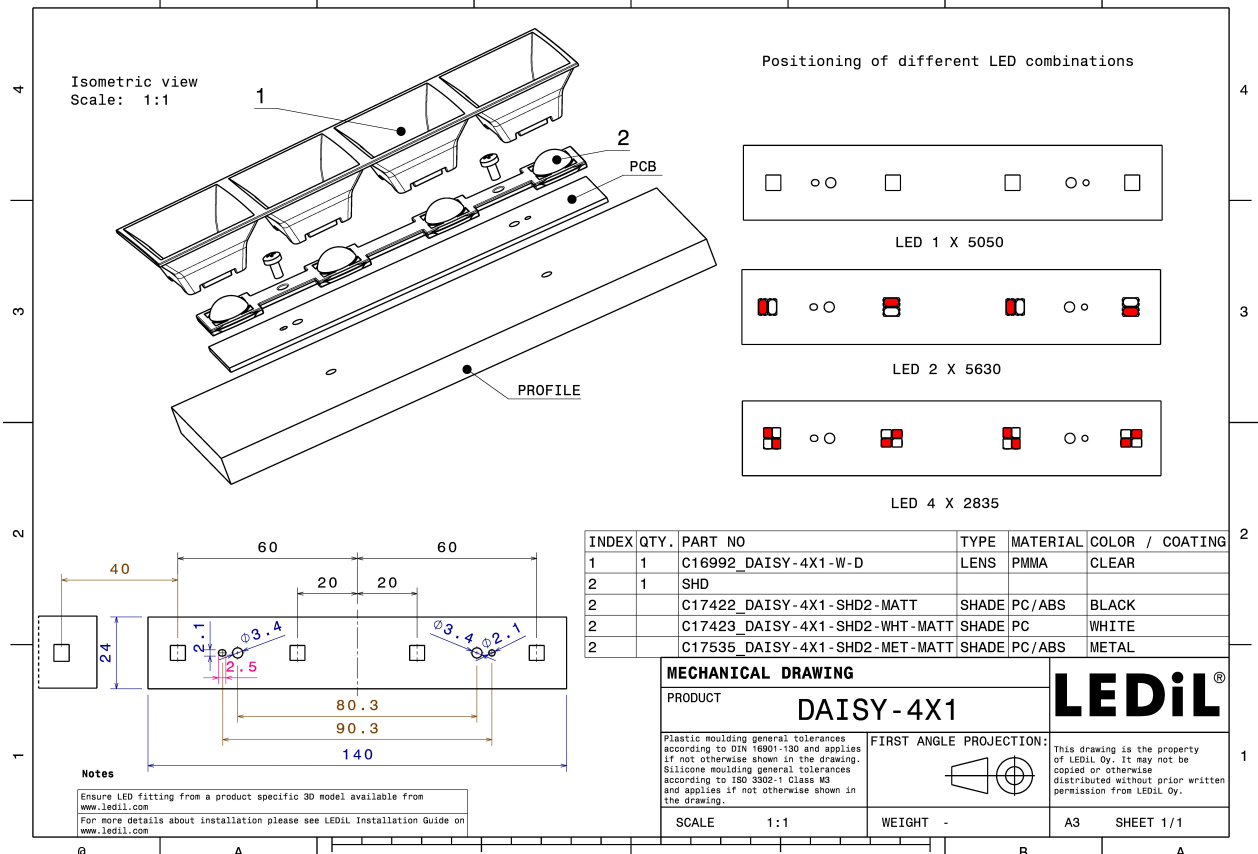
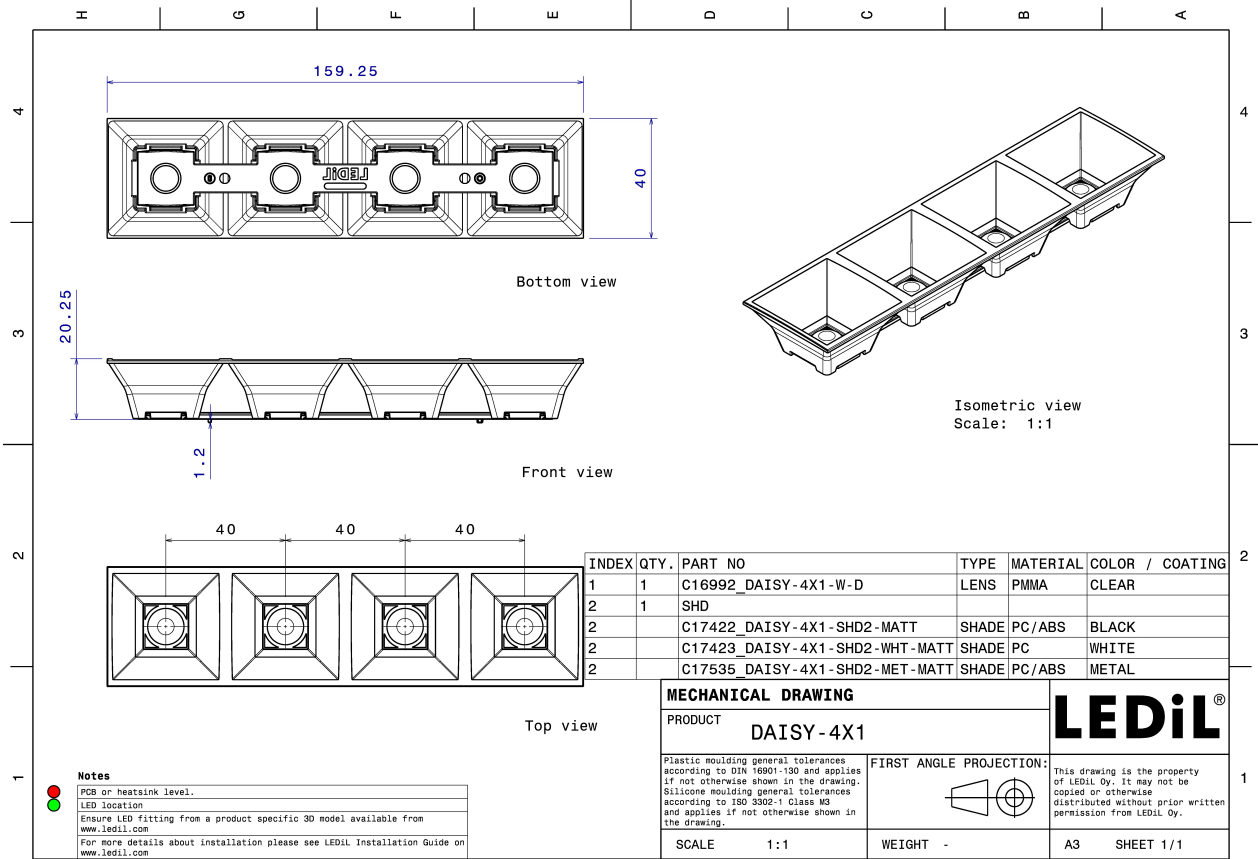
Quantities for one set:

| | |
|-------------|---|
| Linear lens | 1 |
| Shade | 1 |



| Component | | Qty in box | MOQ | MPQ | Box weight (kg) |
|--|-------------|------------|-----|-----|-----------------|
| C16992_DAISY-4X1-W-D » Box size: 480 x 280 x 300 mm | Linear lens | 504 | 336 | 21 | 6.3 |
| C17422_DAISY-4X1-SHD2-MATT » Box size: 480 x 280 x 300 mm | Shade | 168 | 336 | 42 | 8.2 |
| C16590_DAISY-4X1-SHD » Box size: 480 x 280 x 300 mm | Shade | 168 | 336 | 42 | 4.3 |
| C17423_DAISY-4X1-SHD2-WHT-MATT » Box size: 480 x 280 x 300 mm | Shade | 168 | 336 | 42 | 4.4 |
| C16784_DAISY-4X1-SHD-WHT » Box size: 480 x 280 x 300 mm | Shade | 168 | 336 | 42 | 8.6 |
| C17528_DAISY-4X1-SHD-MET » Box size: 480 x 280 x 300 mm | Shade | 168 | 336 | 42 | 4.7 |
| C17535_DAISY-4X1-SHD2-MET-MATT » Box size: 480 x 280 x 300 mm | Shade | 168 | 336 | 42 | 4.1 |



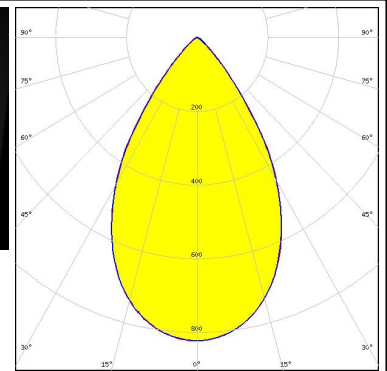


See also our general installation guide: www.ledil.com/installation_guide

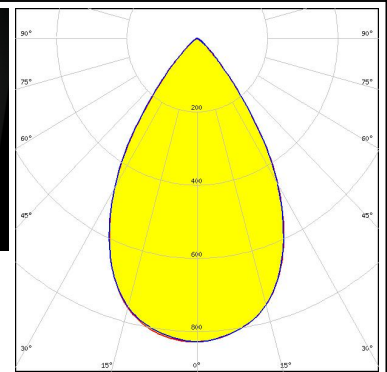
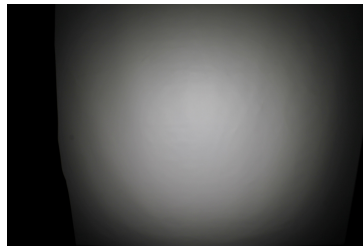
PHOTOMETRIC DATA (MEASURED):



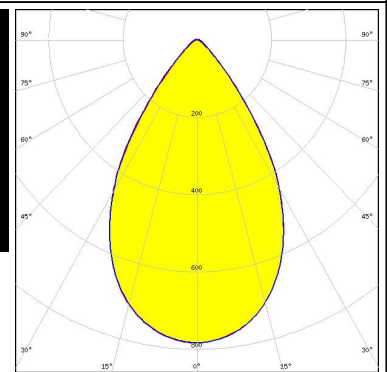
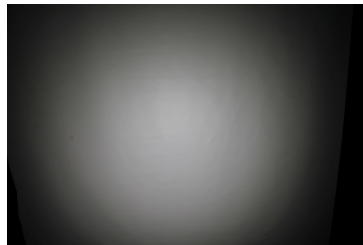
LED LIGHT ENGINE DAISY 16 LEDs 156mm x 20mm
 FWHM / FWTM 63.5° / 90.0°
 Efficiency 88 %
 Peak intensity 0.8 cd/m
 LEDs/each optic 4
 Light colour White
 Required components:
 C17535_DAISSY-4X1-SHD2-MET-MATT



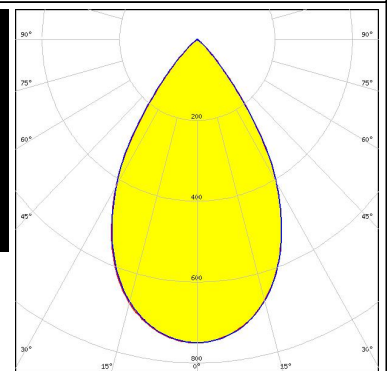
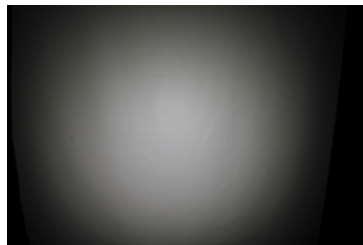
LED LIGHT ENGINE DAISY 16 LEDs 156mm x 20mm
 FWHM / FWTM 63.5° / 90.0°
 Efficiency 90 %
 Peak intensity 0.8 cd/m
 LEDs/each optic 4
 Light colour White
 Required components:
 C17528_DAISSY-4X1-SHD-MET



LED LIGHT ENGINE DAISY 16 LEDs 156mm x 20mm
 FWHM / FWTM 64.5° / 92.0°
 Efficiency 89 %
 Peak intensity 0.8 cd/m
 LEDs/each optic 4
 Light colour White
 Required components:
 C17423_DAISSY-4X1-SHD2-WHT-MATT



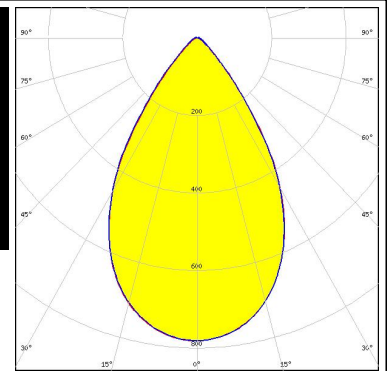
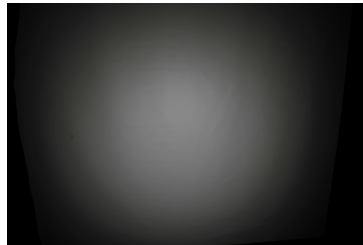
LED LIGHT ENGINE DAISY 16 LEDs 156mm x 20mm
 FWHM / FWTM 63.0° / 88.0°
 Efficiency 77 %
 Peak intensity 0.8 cd/m
 LEDs/each optic 4
 Light colour White
 Required components:
 C17422_DAISSY-4X1-SHD2-MATT



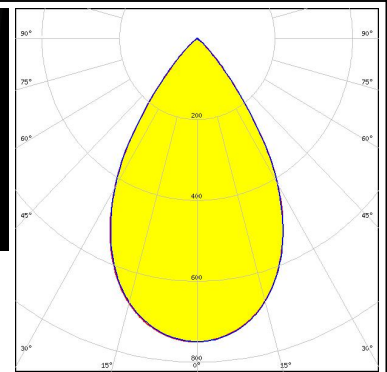
PHOTOMETRIC DATA (MEASURED):



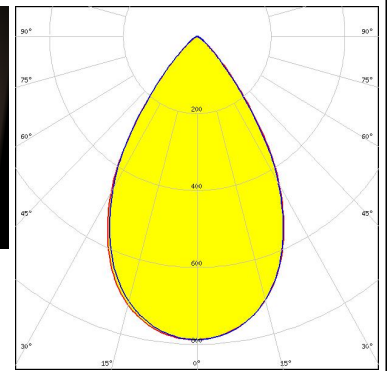
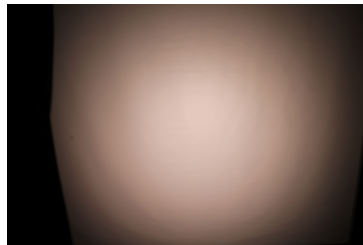
LED LIGHT ENGINE DAISY 16 LEDs 156mm x 20mm
 FWHM / FWTM 64.5° / 93.0°
 Efficiency 89 %
 Peak intensity 0.8 cd/lm
 LEDs/each optic 4
 Light colour White
 Required components:
 C16784_DAISSY-4X1-SHD-WHT



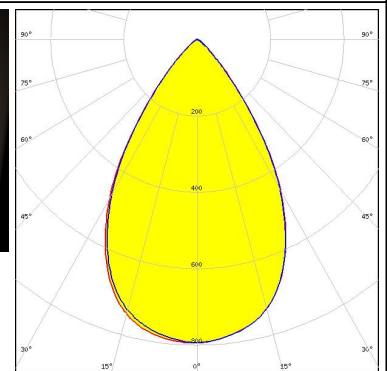
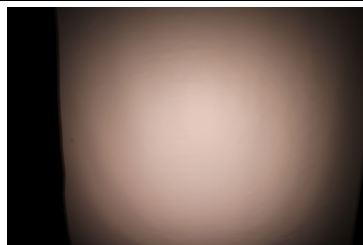
LED LIGHT ENGINE DAISY 16 LEDs 156mm x 20mm
 FWHM / FWTM 63.5° / 88.5°
 Efficiency 78 %
 Peak intensity 0.8 cd/lm
 LEDs/each optic 4
 Light colour White
 Required components:
 C16590_DAISSY-4X1-SHD



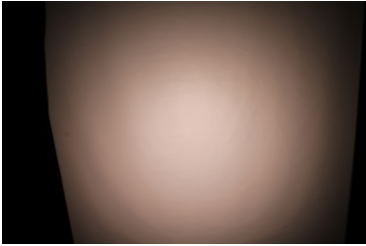
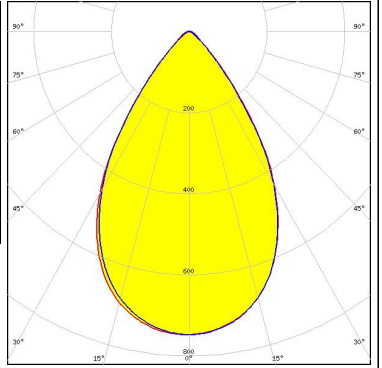

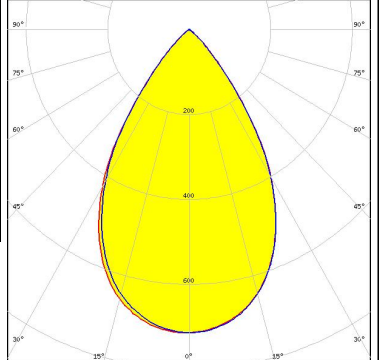

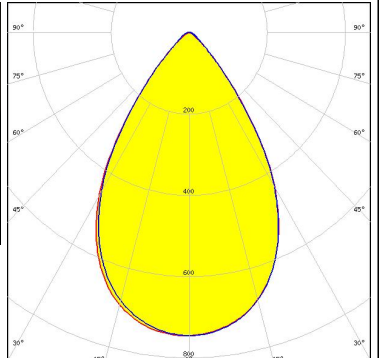
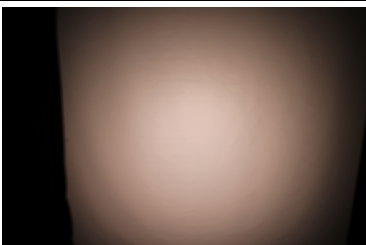
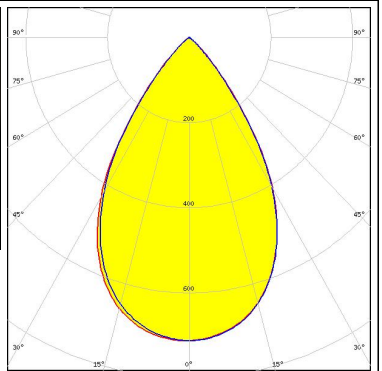
LED LinLED 156x28mm 2x400lm 827-865 2x2C 12V Opt G1
 FWHM / FWTM 64.5° / 92.5 + 92.0°
 Efficiency 87 %
 Peak intensity 0.8 cd/lm
 LEDs/each optic 4
 Light colour Tunable White
 Required components:
 C17535_DAISSY-4X1-SHD2-MET-MATT



LED LinLED 156x28mm 2x400lm 827-865 2x2C 12V Opt G1
 FWHM / FWTM 65.0 + 64.5° / 91.5 + 91.0°
 Efficiency 89 %
 Peak intensity 0.8 cd/lm
 LEDs/each optic 4
 Light colour Tunable White
 Required components:
 C17528_DAISSY-4X1-SHD-MET



PHOTOMETRIC DATA (MEASURED):

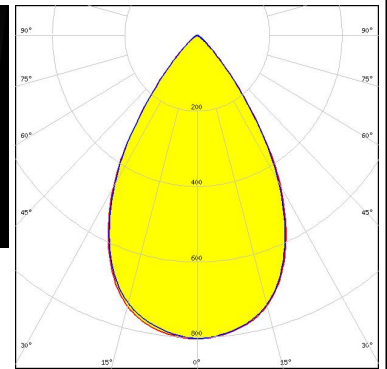
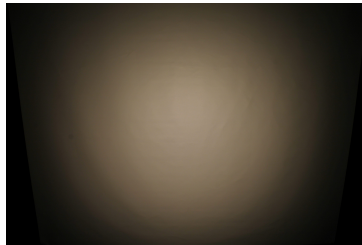
| | | |
|---|--|---|
| <p>MST <i>Your solutions</i></p> <p>LED LinLED 156x28mm 2x400lm 827-865 2x2C 12V Opt G1 FWHM / FWTM 66.5 + 65.5° / 94.0° Efficiency 89 % Peak intensity 0.7 cd/lm LEDs/each optic 4 Light colour Tunable White Required components: C17423_DAISSY-4X1-SHD2-WHT-MATT</p> |  |  |
| <p>MST <i>Your solutions</i></p> <p>LED LinLED 156x28mm 2x400lm 827-865 2x2C 12V Opt G1 FWHM / FWTM 64.5° / 90.0 + 89.5° Efficiency 76 % Peak intensity 0.7 cd/lm LEDs/each optic 4 Light colour Tunable White Required components: C17422_DAISSY-4X1-SHD2-MATT</p> |  |  |
| <p>MST <i>Your solutions</i></p> <p>LED LinLED 156x28mm 2x400lm 827-865 2x2C 12V Opt G1 FWHM / FWTM 66.0 + 65.5° / 94.0° Efficiency 89 % Peak intensity 0.7 cd/lm LEDs/each optic 4 Light colour Tunable White Required components: C16784_DAISSY-4X1-SHD-WHT</p> |  |  |
| <p>MST <i>Your solutions</i></p> <p>LED LinLED 156x28mm 2x400lm 827-865 2x2C 12V Opt G1 FWHM / FWTM 65.0 + 64.5° / 90.0 + 89.5° Efficiency 77 % Peak intensity 0.7 cd/lm LEDs/each optic 4 Light colour Tunable White Required components: C16590_DAISSY-4X1-SHD</p> |  |  |

PHOTOMETRIC DATA (MEASURED):

MST

Your solutions

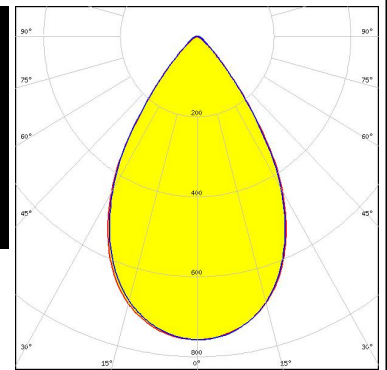
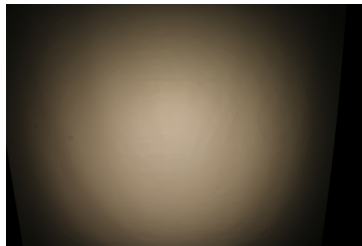
LED LinLED 156x28mm 800lm 8x0 2C 12V Opt G1
 FWHM / FWTM 64.0° / 91.0 + 90.5°
 Efficiency 88 %
 Peak intensity 0.8 cd/lm
 LEDs/each optic 4
 Light colour White
 Required components:
 C17528_DAISSY-4X1-SHD-MET



MST

Your solutions

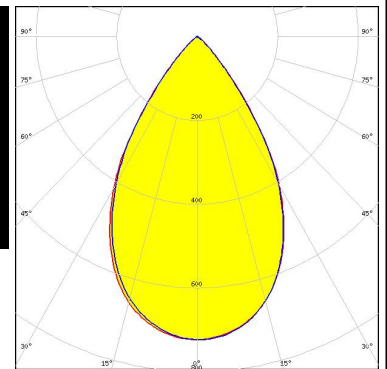
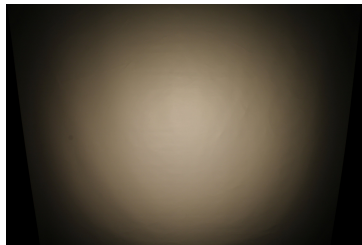
LED LinLED 156x28mm 800lm 8x0 2C 12V Opt G1
 FWHM / FWTM 65.0° / 93.0°
 Efficiency 88 %
 Peak intensity 0.8 cd/lm
 LEDs/each optic 4
 Light colour White
 Required components:
 C17423_DAISSY-4X1-SHD2-WHT-MATT



MST

Your solutions

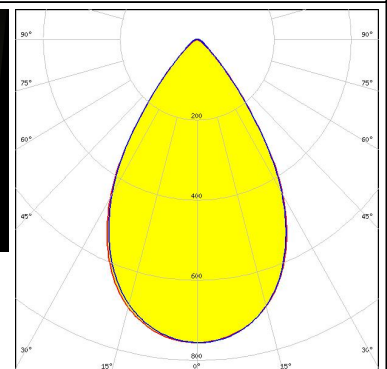
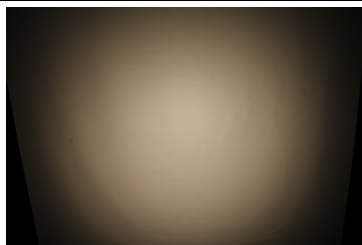
LED LinLED 156x28mm 800lm 8x0 2C 12V Opt G1
 FWHM / FWTM 64.0 + 63.5° / 89.5 + 89.0°
 Efficiency 76 %
 Peak intensity 0.7 cd/lm
 LEDs/each optic 4
 Light colour White
 Required components:
 C17422_DAISSY-4X1-SHD2-MATT



MST

Your solutions

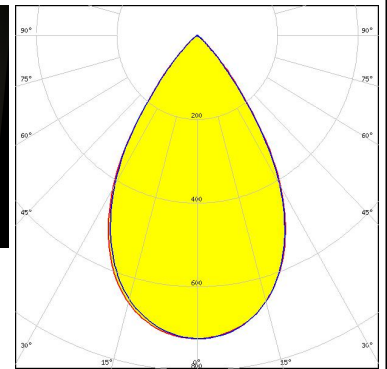
LED LinLED 156x28mm 800lm 8x0 2C 12V Opt G1
 FWHM / FWTM 65.5 + 65.0° / 93.0 + 93.5°
 Efficiency 88 %
 Peak intensity 0.8 cd/lm
 LEDs/each optic 4
 Light colour White
 Required components:
 C16784_DAISSY-4X1-SHD-WHT



PHOTOMETRIC DATA (MEASURED):

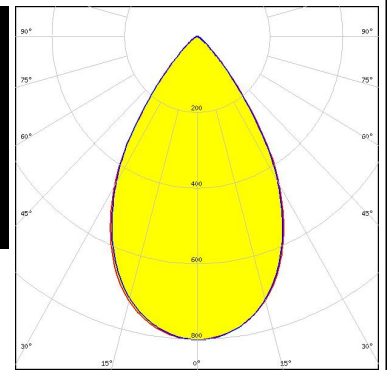
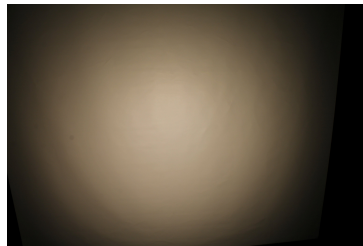
MST *Your solutions*

LED LinLED 156x28mm 800lm 8x0 2C 12V Opt G1
 FWHM / FWTM 64.0° / 89.0 + 88.5°
 Efficiency 77 %
 Peak intensity 0.7 cd/lm
 LEDs/each optic 4
 Light colour White
 Required components:
 C16590_DAISSY-4X1-SHD



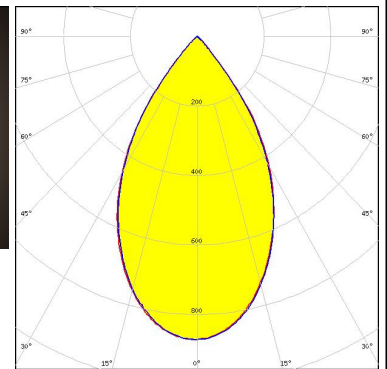
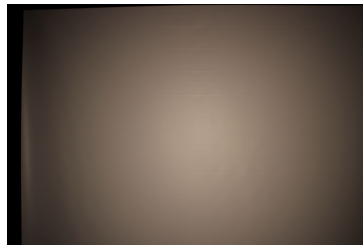
MST *Your solutions*

LED LinLED 156x28mm 800lm 8x0 2C 12V Opt G1
 FWHM / FWTM 64.0° / 92.0°
 Efficiency 87 %
 Peak intensity 0.8 cd/lm
 LEDs/each optic 4
 Light colour White
 Required components:
 C17535_DAISSY-4X1-SHD2-MET-MATT



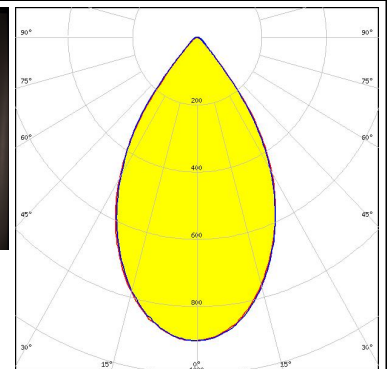
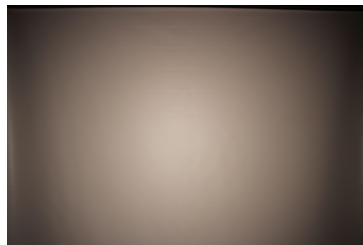
NICHIA

LED NF2W757G-MT (Tunable White)
 FWHM / FWTM 60.0° / 84.0°
 Efficiency 82 %
 Peak intensity 0.9 cd/lm
 LEDs/each optic 1
 Light colour Tunable White
 Required components:
 C16590_DAISSY-4X1-SHD



NICHIA

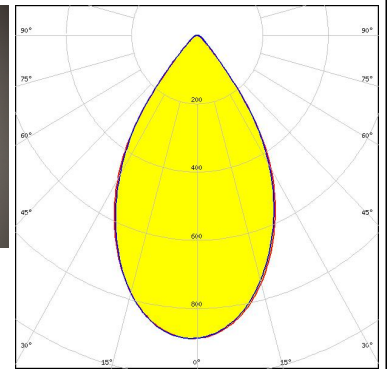
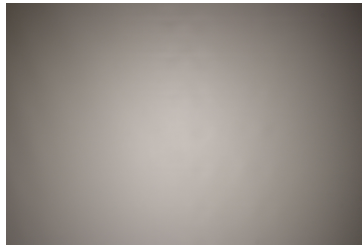
LED NF2W757G-MT (Tunable White)
 FWHM / FWTM 61.0° / 86.0°
 Efficiency 93 %
 Peak intensity 0.9 cd/lm
 LEDs/each optic 1
 Light colour Tunable White
 Required components:
 C16784_DAISSY-4X1-SHD-WHT



PHOTOMETRIC DATA (MEASURED):

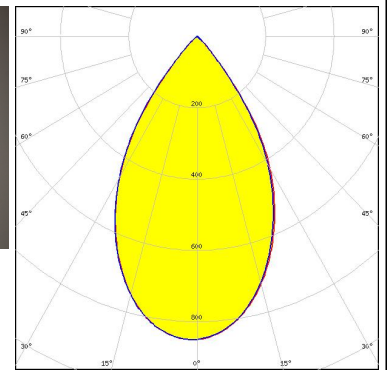
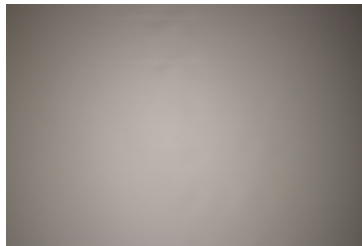
SAMSUNG

LED LM28xB Series
 FWHM / FWTM 62.0° / 87.0°
 Efficiency 92 %
 Peak intensity 0.9 cd/m
 LEDs/each optic 1
 Light colour White
 Required components:
 C16784_DAISY-4X1-SHD-WHT



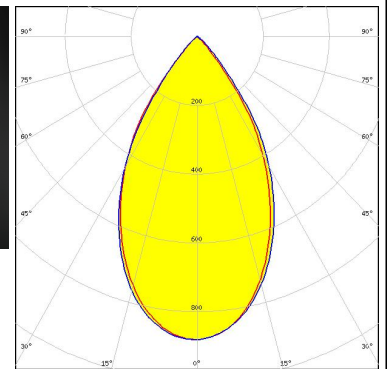
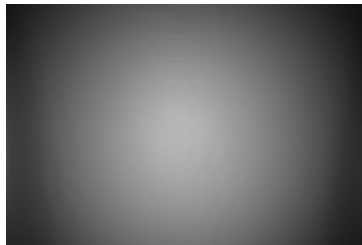
SAMSUNG

LED LM28xB Series
 FWHM / FWTM 61.0° / 85.0°
 Efficiency 82 %
 Peak intensity 0.9 cd/m
 LEDs/each optic 1
 Light colour White
 Required components:
 C16590_DAISY-4X1-SHD

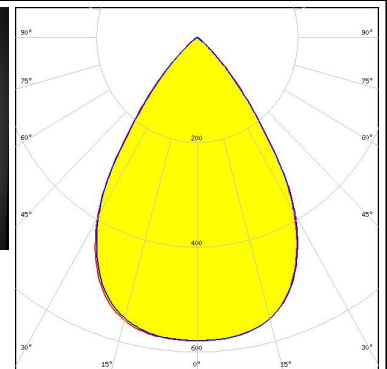
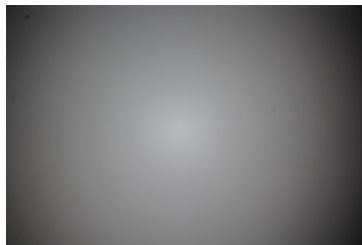


SAMSUNG

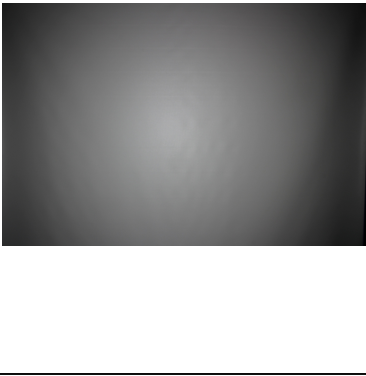
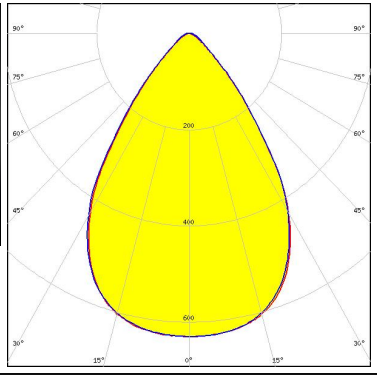

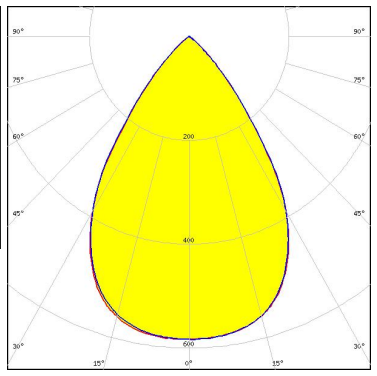

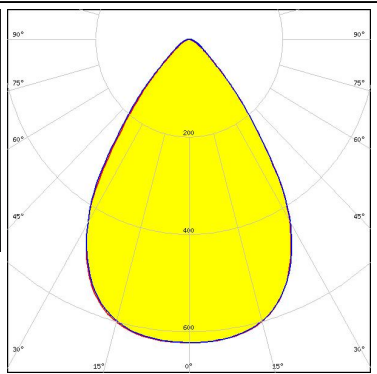
LED LM28xB Series
 FWHM / FWTM 59.0° / 85.0°
 Efficiency 81 %
 Peak intensity 0.9 cd/m
 LEDs/each optic 1
 Light colour White
 Required components:
 C17422_DAISY-4X1-SHD2-MATT



LED PassivePAQ-L-0.5F35-SSA3-1.6K-840-3-DC
 FWHM / FWTM 69.0° / 93.0°
 Efficiency 72 %
 Peak intensity 0.6 cd/m
 LEDs/each optic 4
 Light colour White
 Required components:
 C16590_DAISY-4X1-SHD



PHOTOMETRIC DATA (MEASURED):

| | | |
|---|--|---|
| <p>TEPCOMP group</p> <p>LED PassivePAQ-L-0.5F35-SSA3-1.6K-840-3-DC</p> <p>FWHM / FWTM 70.0° / 100.0°</p> <p>Efficiency 88 %</p> <p>Peak intensity 0.6 cd/lm</p> <p>LEDs/each optic 4</p> <p>Light colour White</p> <p>Required components: C17423_DAISSY-4X1-SHD2-WHT-MATT</p> |  |  |
| <p>TEPCOMP group</p> <p>LED PassivePAQ-L-0.5F35-SSA3-1.6K-840-3-DC</p> <p>FWHM / FWTM 69.0° / 93.0°</p> <p>Efficiency 71 %</p> <p>Peak intensity 0.6 cd/lm</p> <p>LEDs/each optic 4</p> <p>Light colour White</p> <p>Required components: C17422_DAISSY-4X1-SHD2-MATT</p> |  |  |
| <p>TEPCOMP group</p> <p>LED PassivePAQ-L-0.5F35-SSA3-1.6K-840-3-DC</p> <p>FWHM / FWTM 70.0° / 100.0°</p> <p>Efficiency 87 %</p> <p>Peak intensity 0.6 cd/lm</p> <p>LEDs/each optic 4</p> <p>Light colour White</p> <p>Required components: C16784_DAISSY-4X1-SHD-WHT</p> |  |  |