

DAISY-4X1-WW-D

~80° wide beam. Variant with diffused lenses.

SPECIFICATION:

Dimensions	182.0 x 40.0 mm
Height	20.2 mm
Fastening	pin, screw, clips
ROHS compliant	yes ⓘ

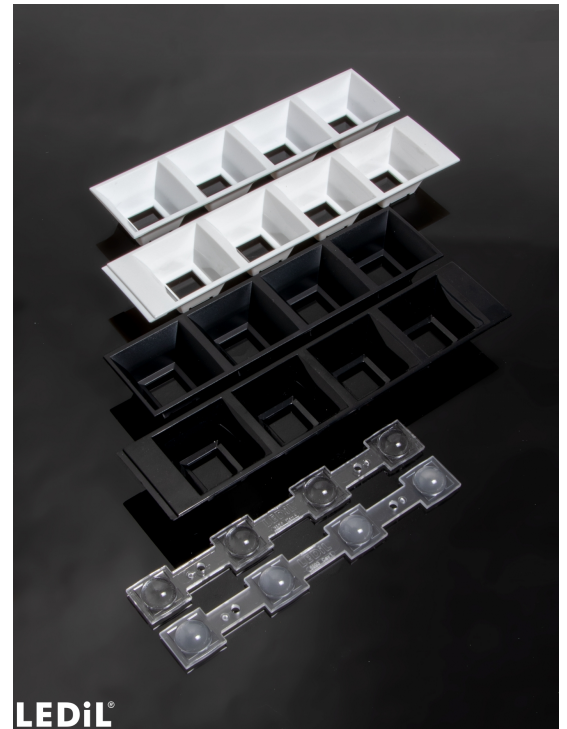
MATERIALS:

Component	Type	Material	Colour	Finish
C16993_DAISY-4X1-WW-D	Linear lens	PMMA	milky	
C19075_DAISY-4X1-SHD2	Shade	PC	black	gloss
C18414_DAISY-4X1-SHD-MET-MATT	Shade	PC	metal	matt
C18412_DAISY-4X1-SHD2-MET	Shade	PC	metal	gloss
C18411_DAISY-4X1-SHD2-MET-MATT	Shade	PC	metal	matt
C18407_DAISY-4X1-SHD-MET	Shade	PC	metal	gloss
C17423_DAISY-4X1-SHD2-WHT-MATT	Shade	PC	white	matt
C17422_DAISY-4X1-SHD2-MATT	Shade	PC	black	matt
C16784_DAISY-4X1-SHD-WHT	Shade	PC	white	gloss
C16590_DAISY-4X1-SHD	Shade	PC	black	gloss

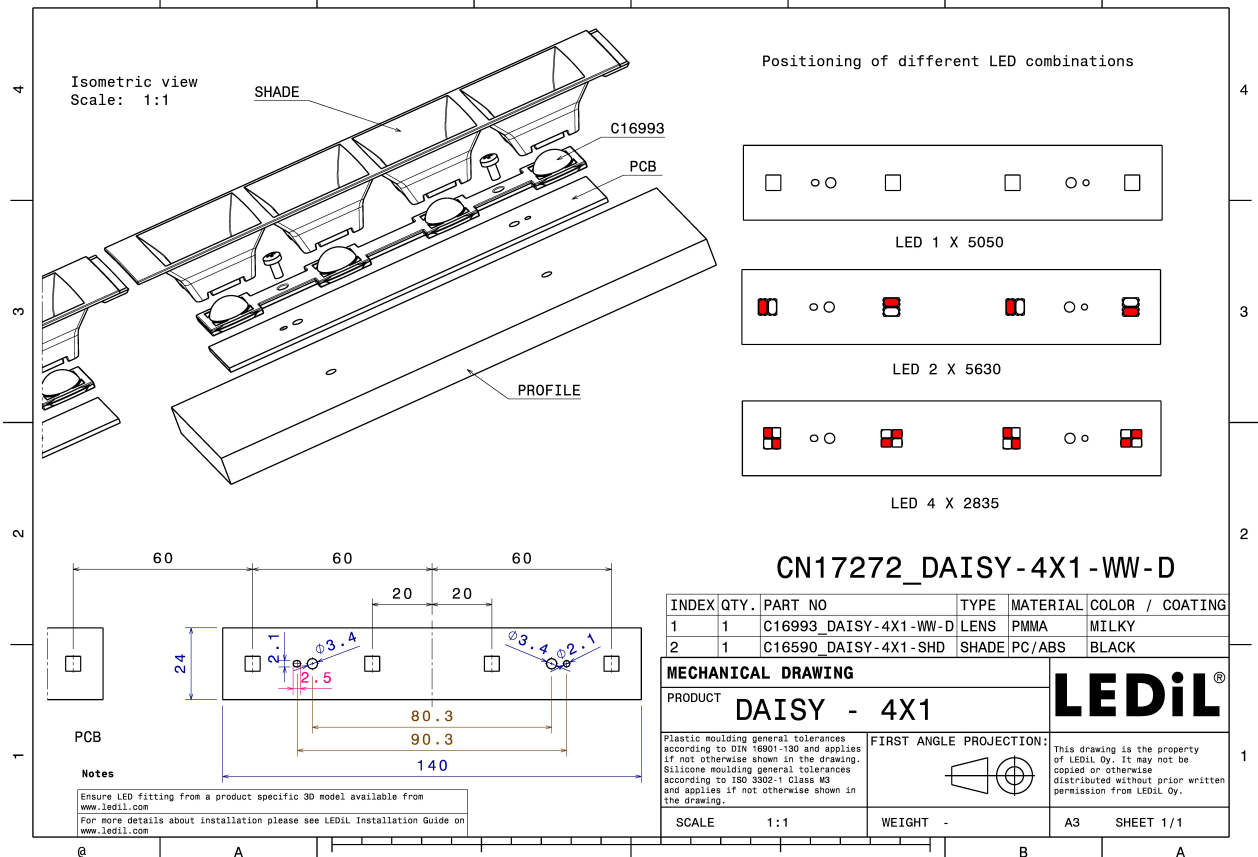
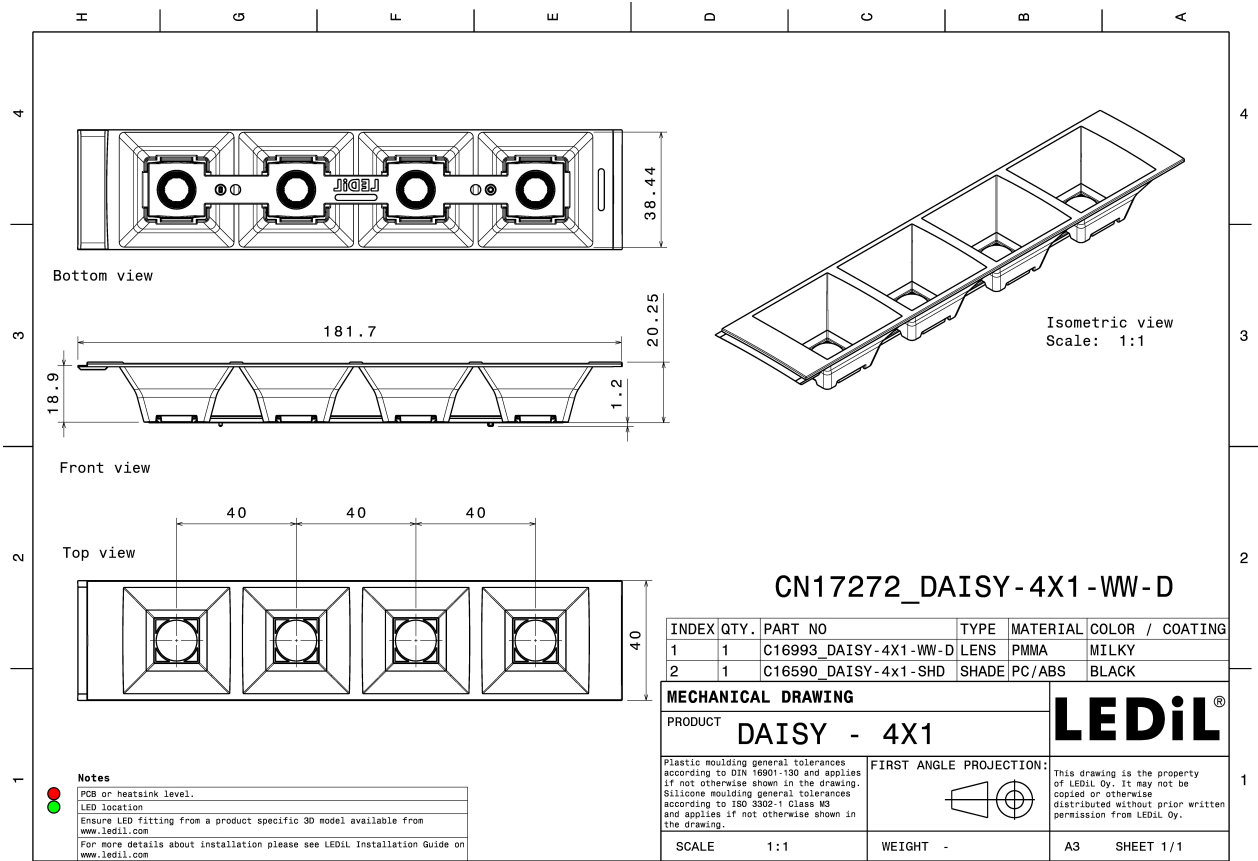
ORDERING INFORMATION:

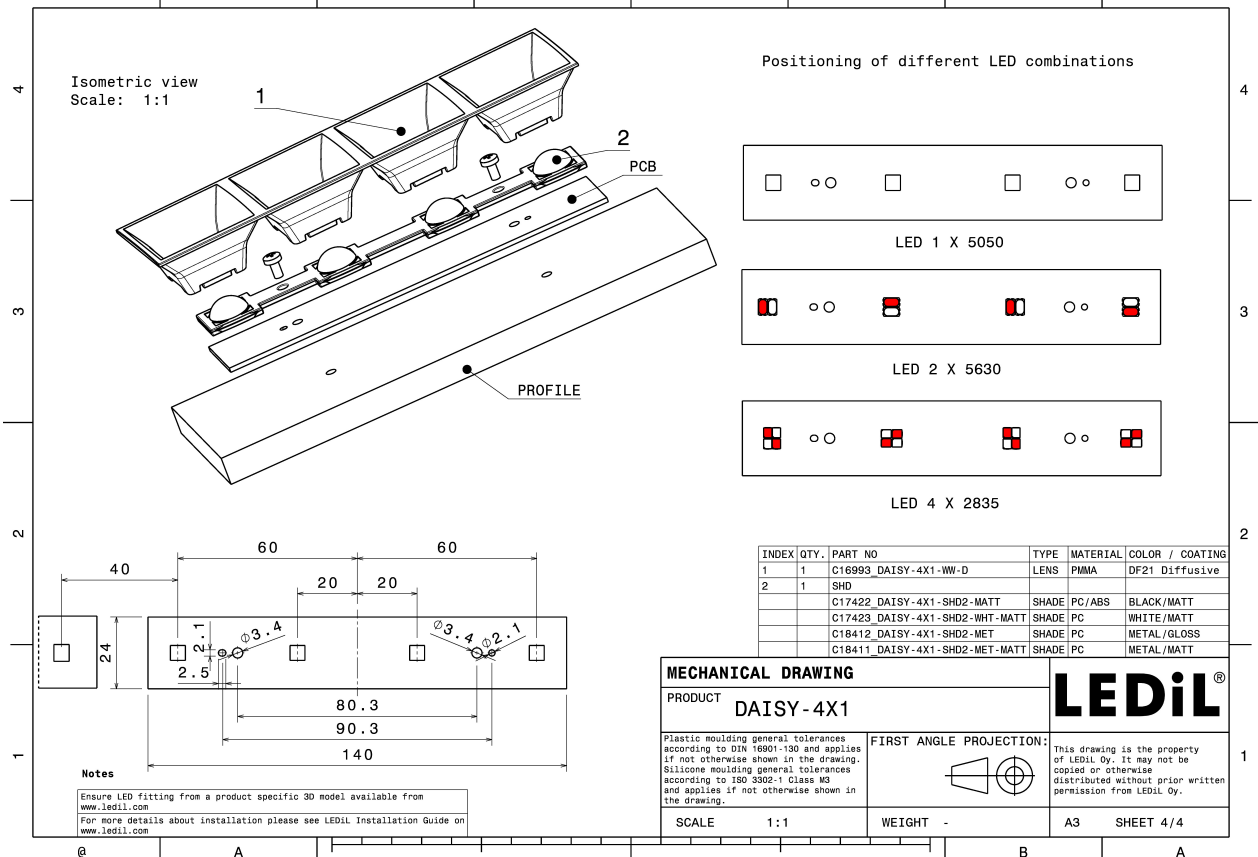
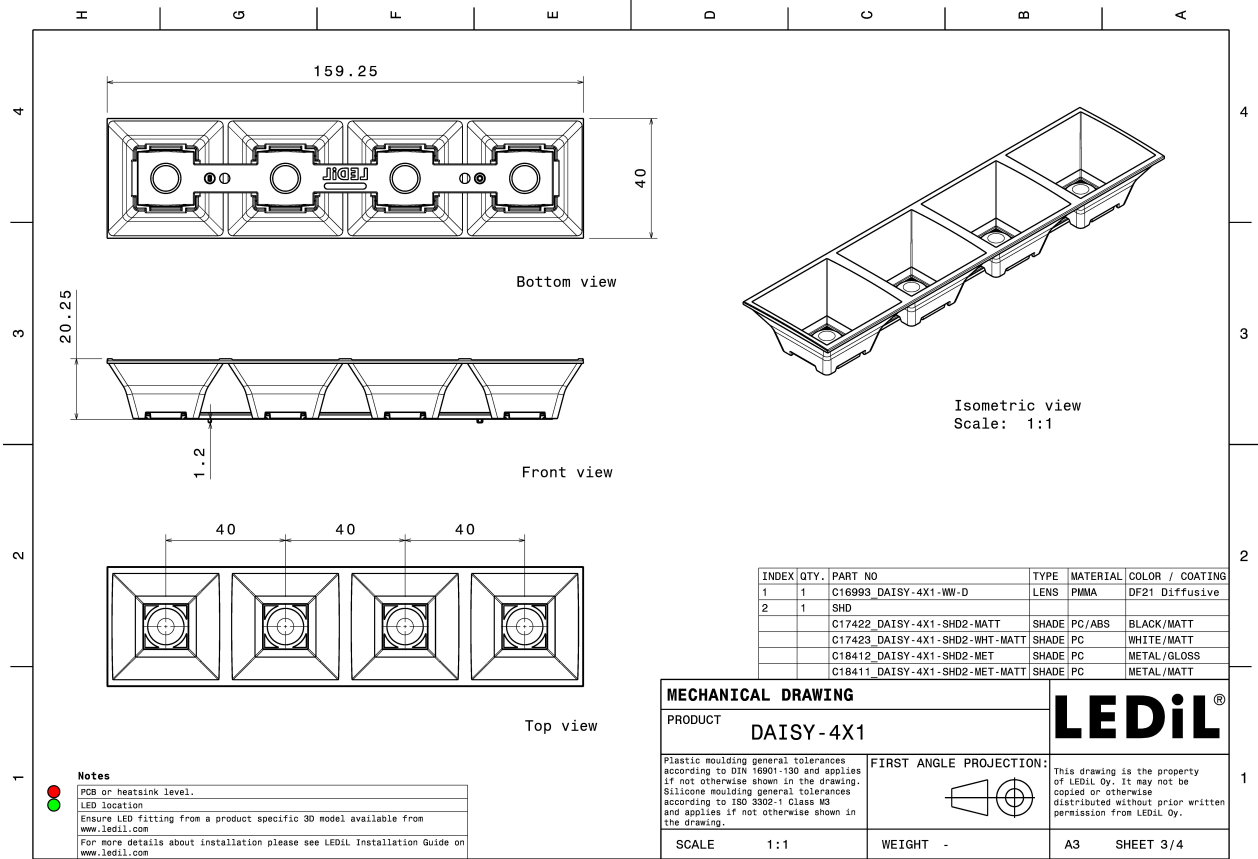
Quantities for one set:

Linear lens	1
Shade	1



Component		Qty in box	MOQ	MPQ	Box weight (kg)
C16993_DAISY-4X1-WW-D » Box size: 480 x 280 x 300 mm	Linear lens	504	336	21	5.6
C16784_DAISY-4X1-SHD-WHT » Box size: 480 x 280 x 300 mm	Shade	168	336	42	5.2
C18407_DAISY-4X1-SHD-MET » Box size: 480 x 280 x 300 mm	Shade	168	336	42	4.3
C19075_DAISY-4X1-SHD2 » Box size: 480 x 280 x 300 mm	Shade	168	336	42	4.4
C18411_DAISY-4X1-SHD2-MET-MATT » Box size: 480 x 280 x 300 mm	Shade	168	336	42	4.7
C17422_DAISY-4X1-SHD2-MATT » Box size: 480 x 280 x 300 mm	Shade	168	336	42	4.7
C18412_DAISY-4X1-SHD2-MET » Box size: 480 x 280 x 300 mm	Shade	168	336	42	
C16590_DAISY-4X1-SHD » Box size: 480 x 280 x 300 mm	Shade	168	336	42	4.9
C17423_DAISY-4X1-SHD2-WHT-MATT » Box size: 480 x 280 x 300 mm	Shade	168	336	42	4.9
C18414_DAISY-4X1-SHD-MET-MATT » Box size: 480 x 280 x 300 mm	Shade	168	336	42	4.3



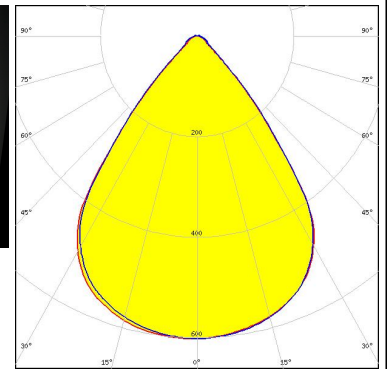
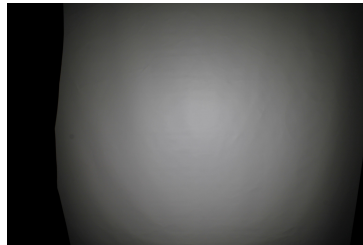


See also our general installation guide: www.ledil.com/installation_guide

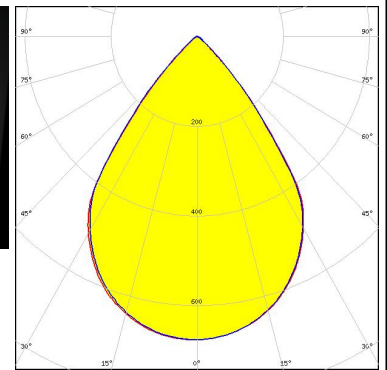
OPTICAL RESULTS (MEASURED):



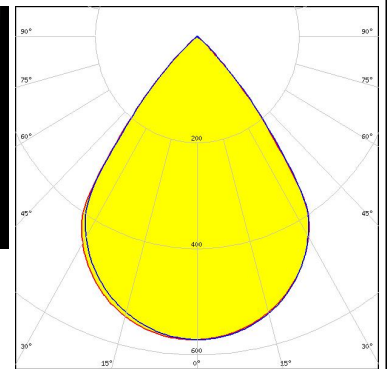
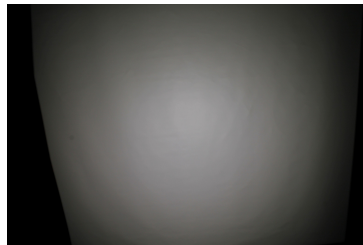
LED LIGHT ENGINE DAISY 16 LEDs 156mm x 20mm
 FWHM / FWTM 75.5° / 96.0°
 Efficiency 93 %
 Peak intensity 0.6 cd/lm
 LEDs/each optic 4
 Light colour White
 Required components:
 C16784_DAISY-4X1-SHD-WHT



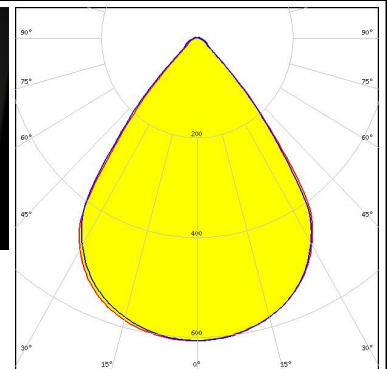
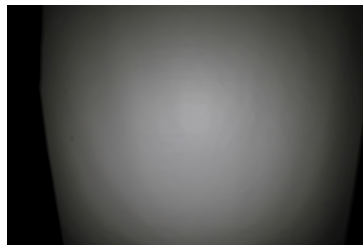
LED LIGHT ENGINE DAISY 16 LEDs 156mm x 20mm
 FWHM / FWTM 74.0° / 94.0°
 Efficiency 91 %
 Peak intensity 0.7 cd/lm
 LEDs/each optic 4
 Light colour White
 Required components:
 C17535_DAISY-4X1-SHD2-MET-MATT



LED LIGHT ENGINE DAISY 16 LEDs 156mm x 20mm
 FWHM / FWTM 74.5° / 92.0°
 Efficiency 78 %
 Peak intensity 0.6 cd/lm
 LEDs/each optic 4
 Light colour White
 Required components:
 C17422_DAISY-4X1-SHD2-MATT



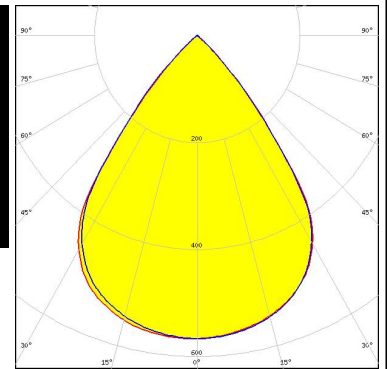
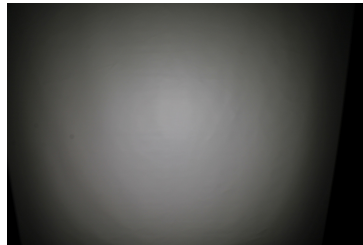
LED LIGHT ENGINE DAISY 16 LEDs 156mm x 20mm
 FWHM / FWTM 75.5° / 96.0°
 Efficiency 92 %
 Peak intensity 0.6 cd/lm
 LEDs/each optic 4
 Light colour White
 Required components:
 C17423_DAISY-4X1-SHD2-WHT-MATT



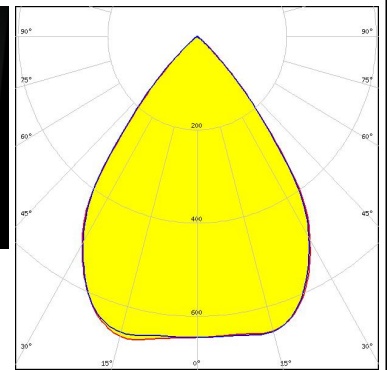
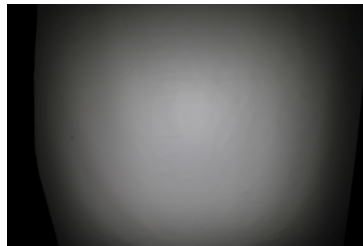
OPTICAL RESULTS (MEASURED):



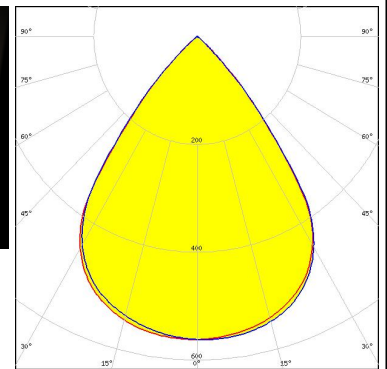
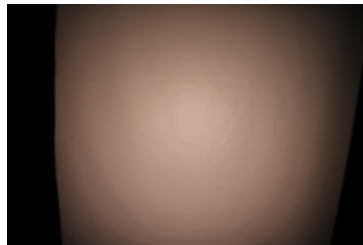
LED LIGHT ENGINE DAISY 16 LEDs 156mm x 20mm
 FWHM / FWTM 75.0° / 93.0°
 Efficiency 79 %
 Peak intensity 0.6 cd/lm
 LEDs/each optic 4
 Light colour White
 Required components:
 C16590_DAISY-4X1-SHD



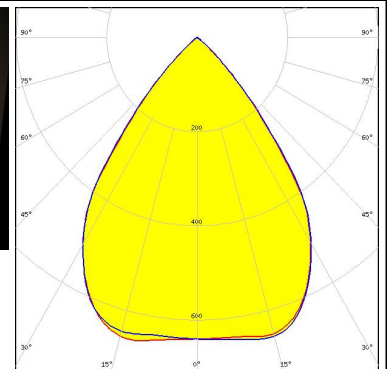
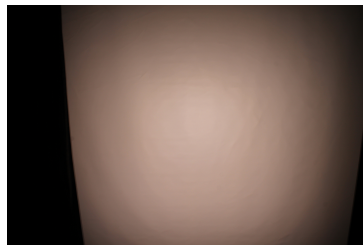
LED LIGHT ENGINE DAISY 16 LEDs 156mm x 20mm
 FWHM / FWTM 73.5° / 93.0°
 Efficiency 94 %
 Peak intensity 0.7 cd/lm
 LEDs/each optic 4
 Light colour White
 Required components:
 C17528_DAISY-4X1-SHD-MET



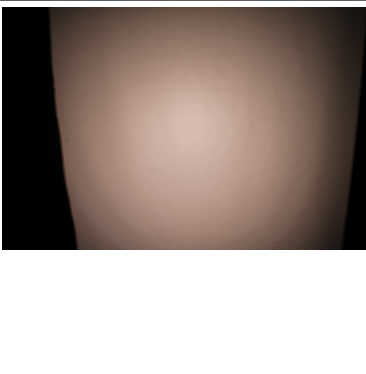
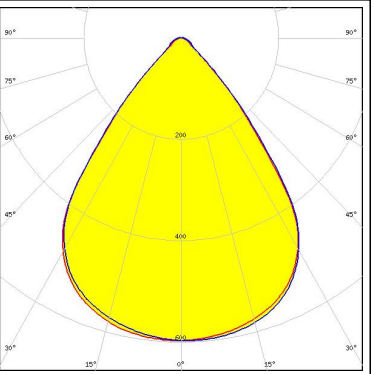
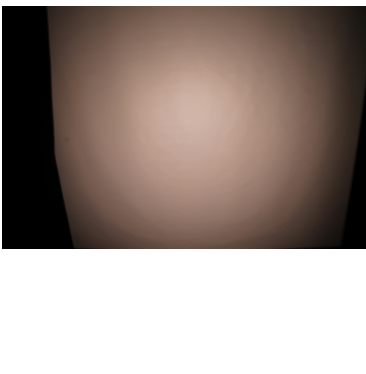
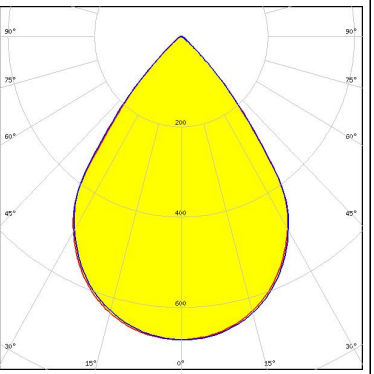
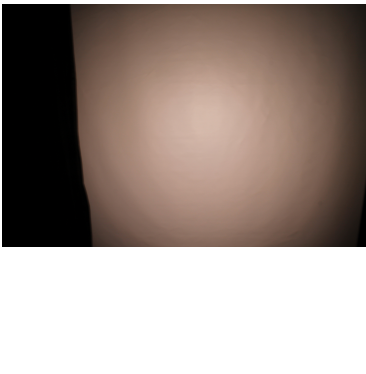
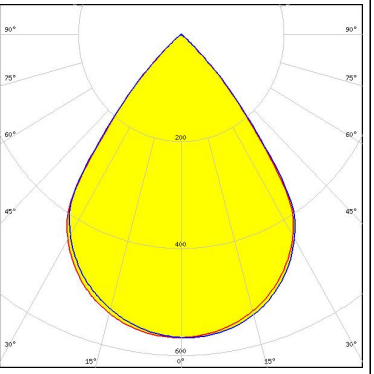
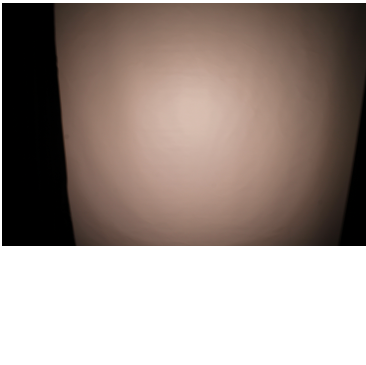
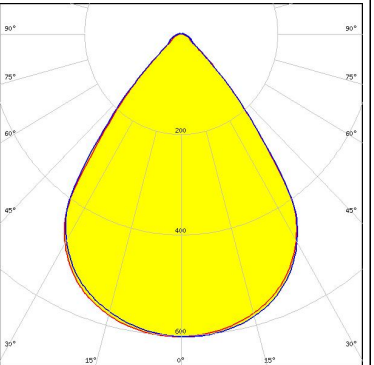
LED LinLED 156x28mm 2x400lm 827-865 2x2C 12V Opt G1
 FWHM / FWTM 74.5 + 75.5° / 93.0 + 93.5°
 Efficiency 79 %
 Peak intensity 0.6 cd/lm
 LEDs/each optic 4
 Light colour Tunable White
 Required components:
 C16590_DAISY-4X1-SHD



LED LinLED 156x28mm 2x400lm 827-865 2x2C 12V Opt G1
 FWHM / FWTM 74.0° / 94.0°
 Efficiency 94 %
 Peak intensity 0.7 cd/lm
 LEDs/each optic 4
 Light colour Tunable White
 Required components:
 C17528_DAISY-4X1-SHD-MET



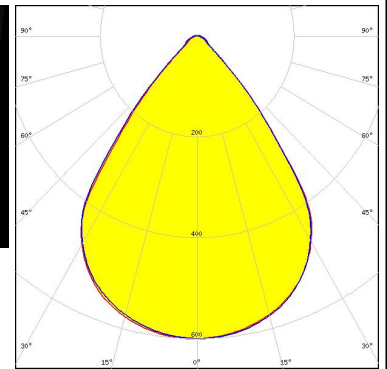
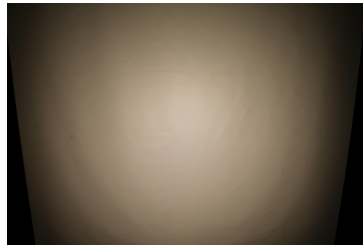
OPTICAL RESULTS (MEASURED):

<p>MST <i>Your solutions</i></p> <p>LED LinLED 156x28mm 2x400lm 827-865 2x2C 12V Opt G1</p> <p>FWHM / FWTM 75.5 + 76.5° / 97.0 + 97.5°</p> <p>Efficiency 93 %</p> <p>Peak intensity 0.6 cd/lm</p> <p>LEDs/each optic 4</p> <p>Light colour Tunable White</p> <p>Required components: C16784_DAISSY-4X1-SHD-WHT</p>		
<p>MST <i>Your solutions</i></p> <p>LED LinLED 156x28mm 2x400lm 827-865 2x2C 12V Opt G1</p> <p>FWHM / FWTM 74.0 + 74.5° / 94.5°</p> <p>Efficiency 92 %</p> <p>Peak intensity 0.7 cd/lm</p> <p>LEDs/each optic 4</p> <p>Light colour Tunable White</p> <p>Required components: C17535_DAISSY-4X1-SHD2-MET-MATT</p>		
<p>MST <i>Your solutions</i></p> <p>LED LinLED 156x28mm 2x400lm 827-865 2x2C 12V Opt G1</p> <p>FWHM / FWTM 74.5 + 75.0° / 93.5°</p> <p>Efficiency 78 %</p> <p>Peak intensity 0.6 cd/lm</p> <p>LEDs/each optic 4</p> <p>Light colour Tunable White</p> <p>Required components: C17422_DAISSY-4X1-SHD2-MATT</p>		
<p>MST <i>Your solutions</i></p> <p>LED LinLED 156x28mm 2x400lm 827-865 2x2C 12V Opt G1</p> <p>FWHM / FWTM 76.0 + 76.5° / 97.0 + 97.5°</p> <p>Efficiency 92 %</p> <p>Peak intensity 0.6 cd/lm</p> <p>LEDs/each optic 4</p> <p>Light colour Tunable White</p> <p>Required components: C17423_DAISSY-4X1-SHD2-WHT-MATT</p>		

OPTICAL RESULTS (MEASURED):

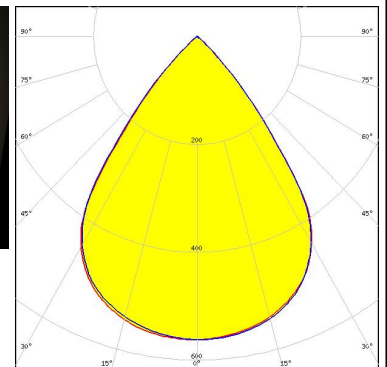
MST *Your solutions*

LED LinLED 156x28mm 800lm 8x0 2C 12V Opt G1
 FWHM / FWTM 75.0 + 75.5° / 96.0 + 97.0°
 Efficiency 91 %
 Peak intensity 0.6 cd/lm
 LEDs/each optic 4
 Light colour White
 Required components:
 C17423_DAISSY-4X1-SHD2-WHT-MATT



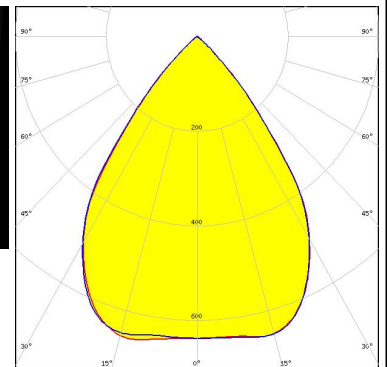
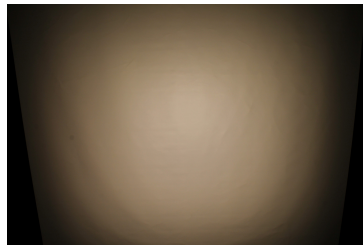
MST *Your solutions*

LED LinLED 156x28mm 800lm 8x0 2C 12V Opt G1
 FWHM / FWTM 74.0 + 74.5° / 92.5°
 Efficiency 78 %
 Peak intensity 0.6 cd/lm
 LEDs/each optic 4
 Light colour White
 Required components:
 C16590_DAISSY-4X1-SHD



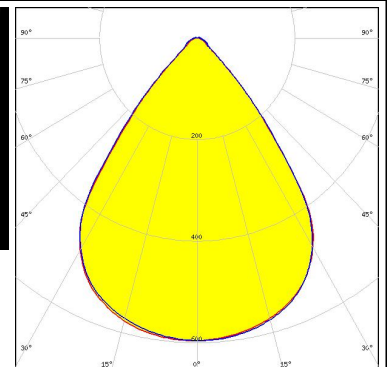
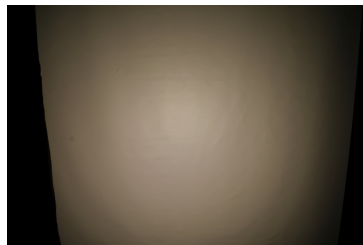
MST *Your solutions*

LED LinLED 156x28mm 800lm 8x0 2C 12V Opt G1
 FWHM / FWTM 73.5° / 93.0 + 93.5°
 Efficiency 93 %
 Peak intensity 0.7 cd/lm
 LEDs/each optic 4
 Light colour White
 Required components:
 C17528_DAISSY-4X1-SHD-MET



MST *Your solutions*

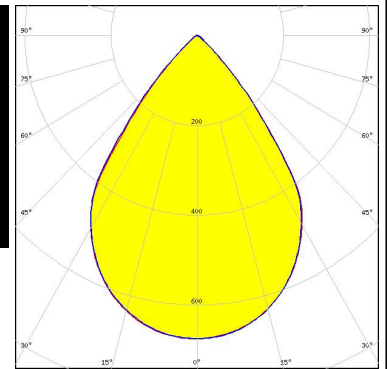
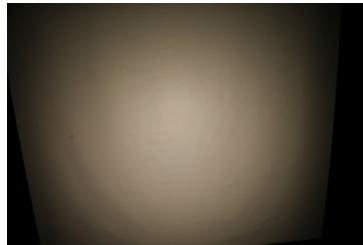
LED LinLED 156x28mm 800lm 8x0 2C 12V Opt G1
 FWHM / FWTM 75.5° / 96.5 + 97.0°
 Efficiency 91 %
 Peak intensity 0.6 cd/lm
 LEDs/each optic 4
 Light colour White
 Required components:
 C16784_DAISSY-4X1-SHD-WHT



OPTICAL RESULTS (MEASURED):

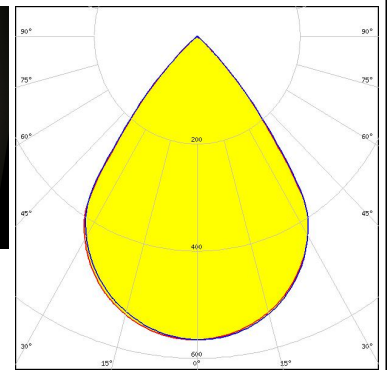
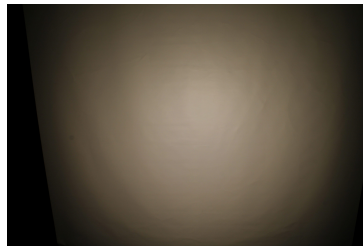
MST Your solutions

LED LinLED 156x28mm 800lm 8x0 2C 12V Opt G1
 FWHM / FWTM 73.5° / 94.0 + 94.5°
 Efficiency 90 %
 Peak intensity 0.7 cd/lm
 LEDs/each optic 4
 Light colour White
 Required components:
 C17535_DAISSY-4X1-SHD2-MET-MATT



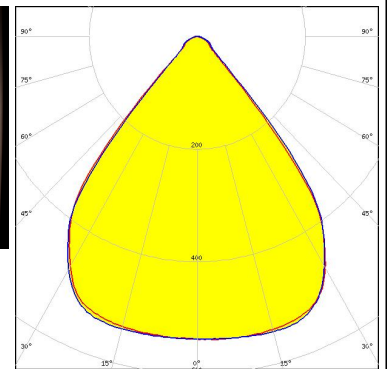
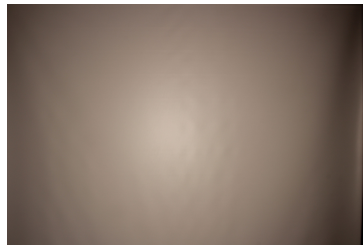
MST Your solutions

LED LinLED 156x28mm 800lm 8x0 2C 12V Opt G1
 FWHM / FWTM 74.5° / 92.5°
 Efficiency 76 %
 Peak intensity 0.6 cd/lm
 LEDs/each optic 4
 Light colour White
 Required components:
 C17422_DAISSY-4X1-SHD2-MATT



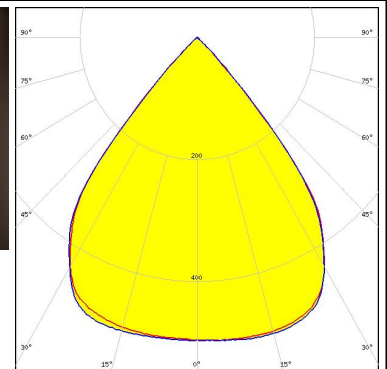
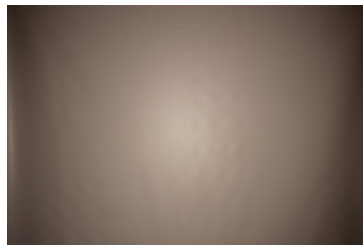
NICHIA

LED NF2W757G-MT (Tunable White)
 FWHM / FWTM 80.0° / 95.0°
 Efficiency 93 %
 Peak intensity 0.5 cd/lm
 LEDs/each optic 1
 Light colour Tunable White
 Required components:
 C16784_DAISSY-4X1-SHD-WHT



NICHIA

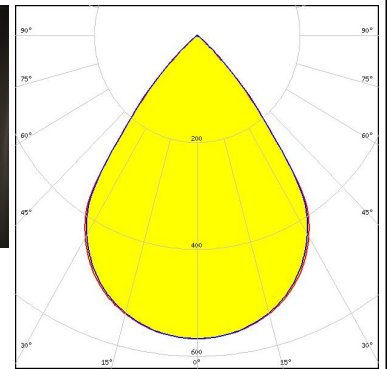
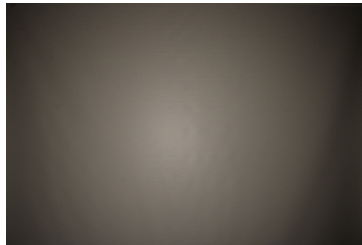
LED NF2W757G-MT (Tunable White)
 FWHM / FWTM 79.0° / 90.0°
 Efficiency 79 %
 Peak intensity 0.5 cd/lm
 LEDs/each optic 1
 Light colour Tunable White
 Required components:
 C16590_DAISSY-4X1-SHD



OPTICAL RESULTS (MEASURED):

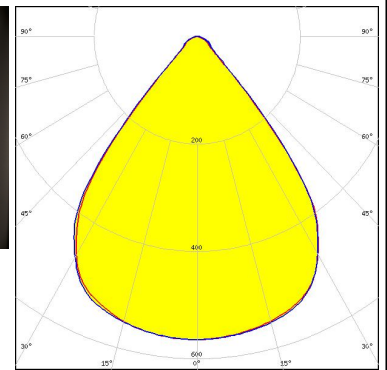
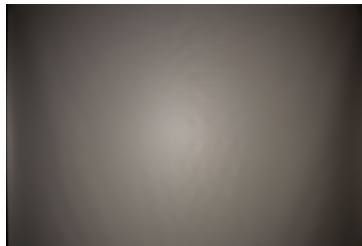
OSRAM

LED PL-LIN-1000 140x24mm
 FWHM / FWTM 74.0° / 94.0°
 Efficiency 77 %
 Peak intensity 0.6 cd/lm
 LEDs/each optic 4
 Light colour White
 Required components:
 C17422_DAISSY-4X1-SHD2-MATT



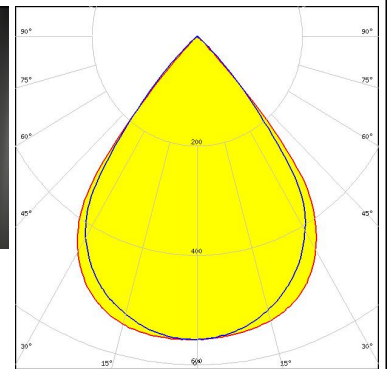
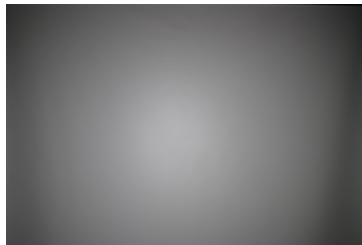
SAMSUNG

LED LM28xB Series
 FWHM / FWTM 78.0° / 95.0°
 Efficiency 93 %
 Peak intensity 0.6 cd/lm
 LEDs/each optic 1
 Light colour White
 Required components:
 C16784_DAISSY-4X1-SHD-WHT



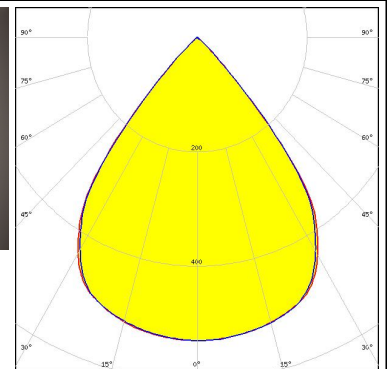
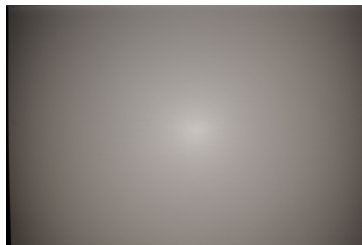
SAMSUNG

LED LM28xB Series
 FWHM / FWTM 76.0° / 90.0°
 Efficiency 78 %
 Peak intensity 0.6 cd/lm
 LEDs/each optic 1
 Light colour White
 Required components:
 C17422_DAISSY-4X1-SHD2-MATT

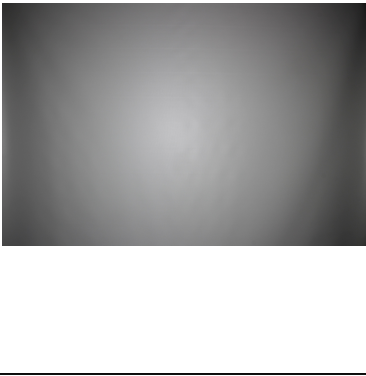
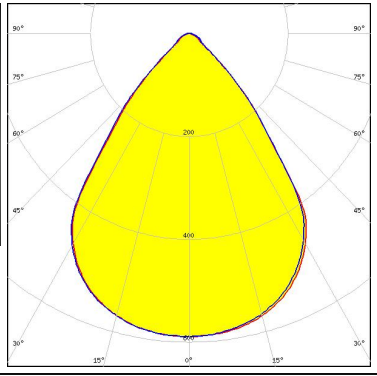

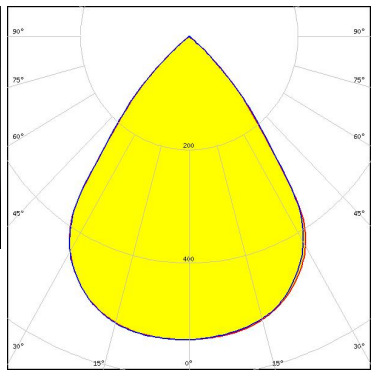
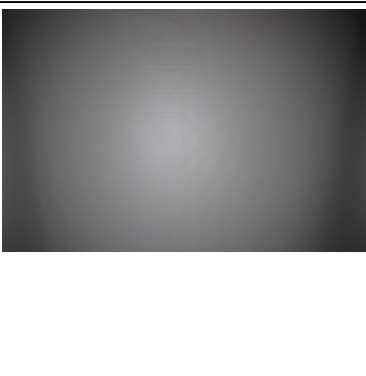
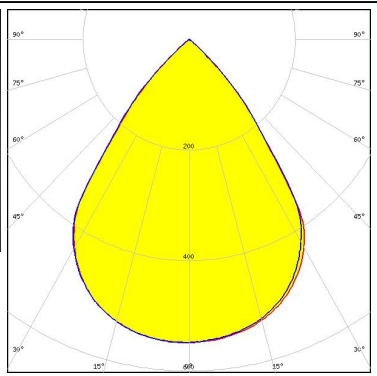

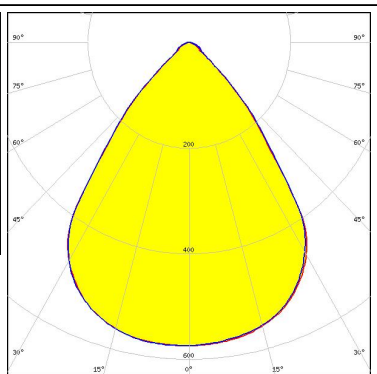


SAMSUNG

LED LM28xB Series
 FWHM / FWTM 78.0° / 91.0°
 Efficiency 79 %
 Peak intensity 0.5 cd/lm
 LEDs/each optic 2
 Light colour White
 Required components:
 C16590_DAISSY-4X1-SHD



OPTICAL RESULTS (MEASURED):

<p>TEPCOMP group</p> <p>LED PassivePAQ-L-0.5F35-SSA3-1.6K-840-3-DC</p> <p>FWHM / FWTM 75.0° / 100.0°</p> <p>Efficiency 92 %</p> <p>Peak intensity 0.6 cd/lm</p> <p>LEDs/each optic 4</p> <p>Light colour White</p> <p>Required components: C17423_DAISSY-4X1-SHD2-WHT-MATT</p>		
<p>TEPCOMP group</p> <p>LED PassivePAQ-L-0.5F35-SSA3-1.6K-840-3-DC</p> <p>FWHM / FWTM 75.0° / 96.0°</p> <p>Efficiency 77 %</p> <p>Peak intensity 0.5 cd/lm</p> <p>LEDs/each optic 4</p> <p>Light colour White</p> <p>Required components: C16590_DAISSY-4X1-SHD</p>		
<p>TEPCOMP group</p> <p>LED PassivePAQ-L-0.5F35-SSA3-1.6K-840-3-DC</p> <p>FWHM / FWTM 74.0° / 96.0°</p> <p>Efficiency 76 %</p> <p>Peak intensity 0.5 cd/lm</p> <p>LEDs/each optic 4</p> <p>Light colour White</p> <p>Required components: C17422_DAISSY-4X1-SHD2-MATT</p>		
<p>TEPCOMP group</p> <p>LED PassivePAQ-L-0.5F35-SSA3-1.6K-840-3-DC</p> <p>FWHM / FWTM 76.0° / 101.0°</p> <p>Efficiency 91 %</p> <p>Peak intensity 0.6 cd/lm</p> <p>LEDs/each optic 4</p> <p>Light colour White</p> <p>Required components: C16784_DAISSY-4X1-SHD-WHT</p>		

OPTICAL RESULTS (SIMULATED):

SAMSUNG

LED	LM28xB Series
FWHM / FWTM	74.0° / 92.0°
Efficiency	76 %
Peak intensity	0.6 cd/lm
LEDs/each optic	4
Light colour	White
Required components:	
	C17422_DAISSY-4X1-SHD2-MATT

